

Vektex LLC 1334 East Sixth Ave. P.O. Box 625 Emporia, Ks. 66801 U.S.A.	Instruction Sheet	IS 5505	
		REV: B	
		ECN 5249	
		BY/DATE: KR	05/07/24
		APPR/DATE: RAJ	05/07/24
TITLE: CONFIGURATION OF IO MODULES, AWP, MCE			

This configuration procedure applies to the Advanced Workholding Pump, Machine Control Ethernet, IO Module 85595573, Murr Article No. 55142.



10-bit DIP switch



Function/bit	Switch position	Description
IP address		
DIP 1 ... 8	0	<ul style="list-style-type: none"> ■ Out-of-the-box/Factory Reset: DHCP/BOOTP queries in 60 second intervals ■ Network parameters have been saved previously: The parameters saved last are applied.
	1 ... 254	The last octet of the saved IP address is overwritten by the DIP switch setting and applied.
	255	The IP address saved last is used.
Activate web server		
9	ON	Web server off
	OFF	Web server on
Operating mode		
10	ON	Factory reset
	OFF	Normal operation

All new part and replacement part IO Modules will need to be configured before shipment to the customer. It is necessary to know whether the IO Module will be used in the 1-4 valve position (IO Module 0) or the extended 5-6 valve position (IO Module 1) and configured accordingly. Use the following configuration instructions.

Vektex LLC 1334 East Sixth Ave. P.O. Box 625 Emporia, Ks. 66801 U.S.A.	Instruction Sheet	IS 5505	
		REV: B	
		ECN 5249	
		BY/DATE: KR	05/07/24
		APPR/DATE: RAJ	05/07/24
TITLE: CONFIGURATION OF IO MODULES, AWP, MCE			

1. Set IO Module IP address to default value.
 - a. Set DIP switch 10 to On and power IO Module Off and On.
 - b. Set DIP switch 10 to Off and power IO Module Off and On.

2. Set DIP switch to **1** for IO Module 0 (IP Address 192.168.123.1)

Input DMX Address Number:

1 Show



a.

3. Set DIP switch to **2** for IO Module 1 (IP Address 192.168.123.2)

Input DMX Address Number:

2 Show

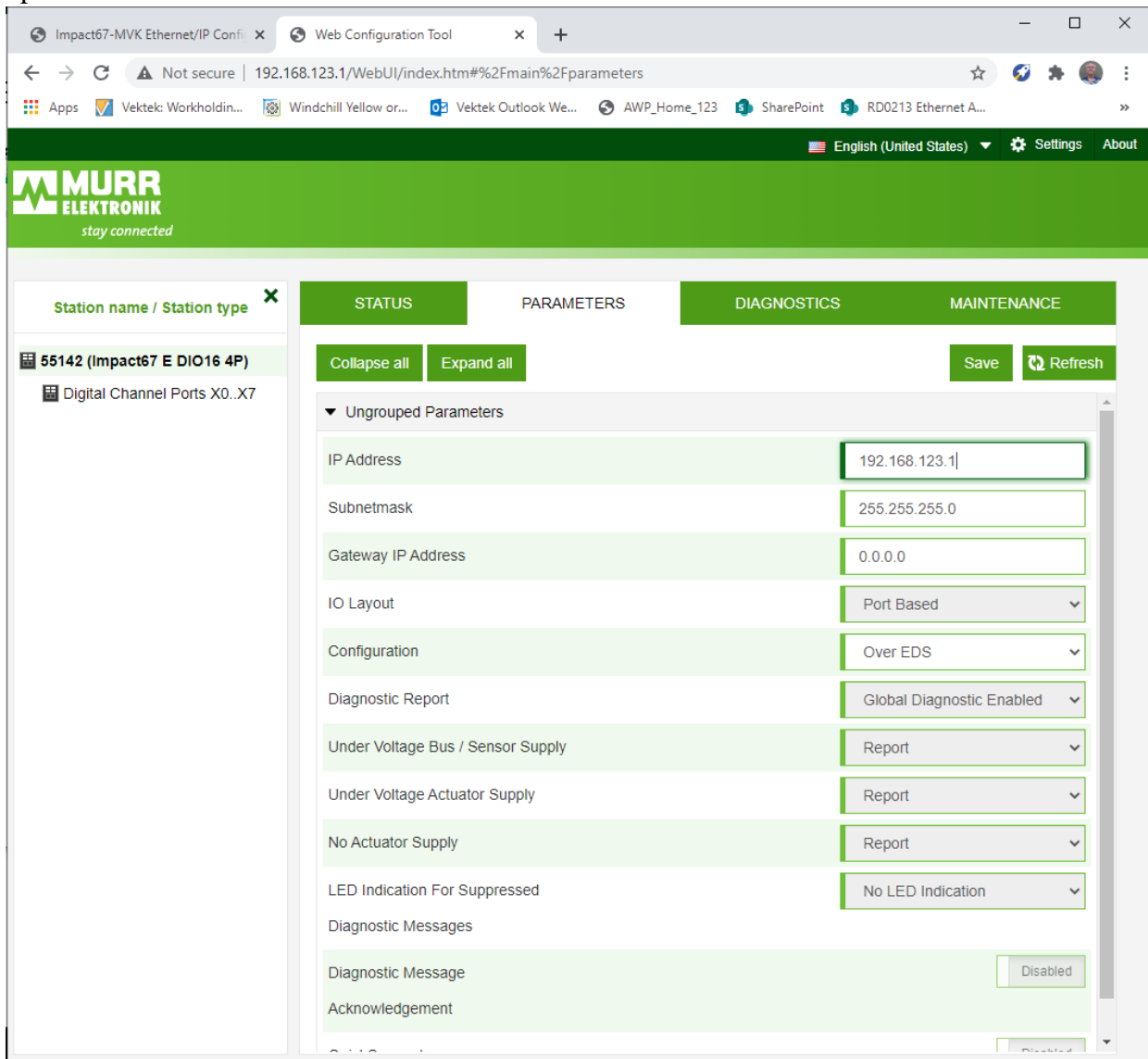


a.

4. Connect Data Cable direct to IO Module data port (program 1 IO module at a time)
5. Set PC network IP Address to fixed 192.168.1.xxx

Vekttek LLC 1334 East Sixth Ave. P.O. Box 625 Emporia, Ks. 66801 U.S.A.	Instruction Sheet	IS 5505	
		REV: B	
		ECN 5249	
		BY/DATE: KR	05/07/24
		APPR/DATE: RAJ	05/07/24
TITLE: CONFIGURATION OF IO MODULES, AWP, MCE			

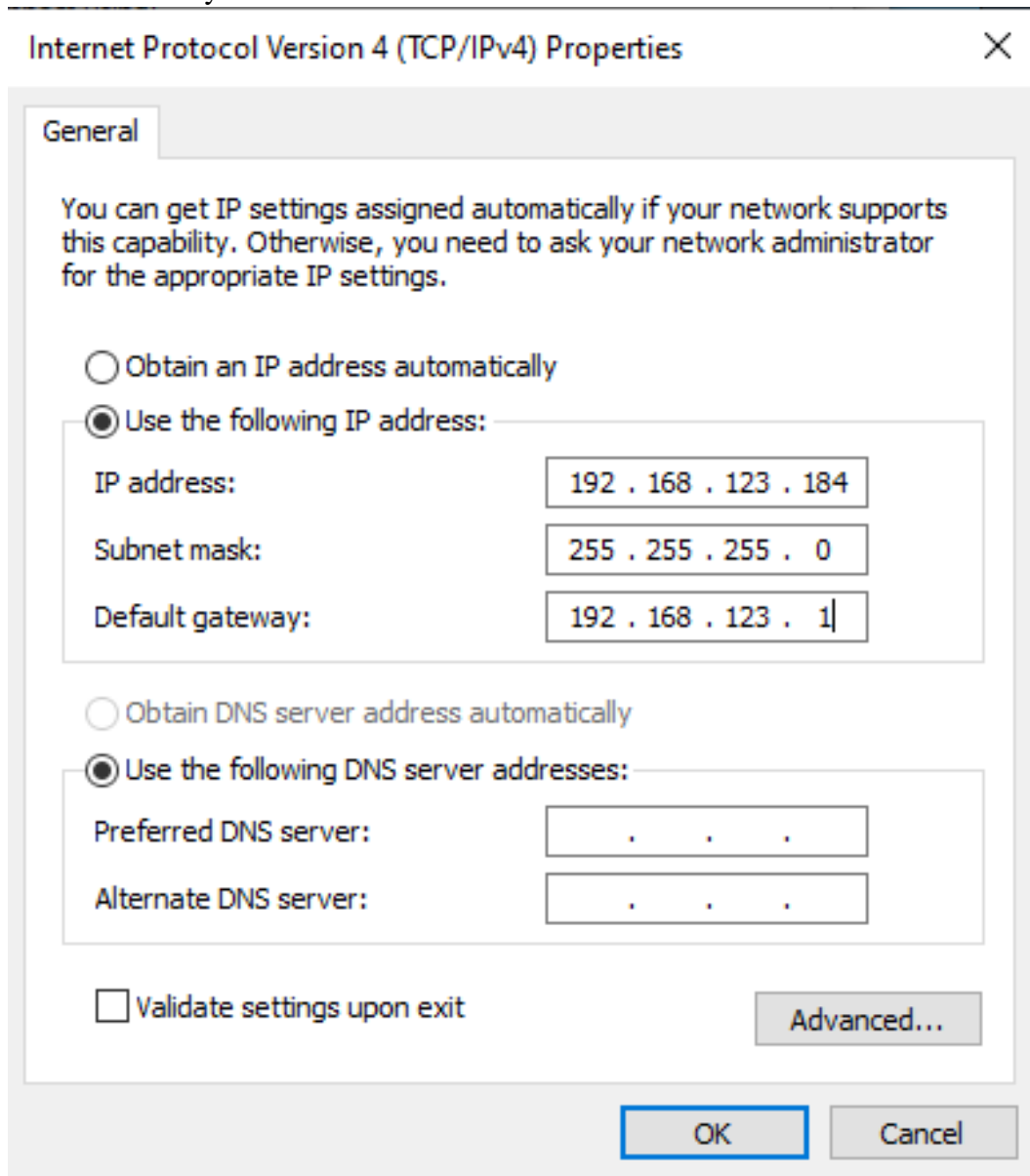
6. Open a web browser and type in the default IP Address 192.168.1.1 into the URL field.
 - a. Alternate default IP Address is 192.168.1.6
7. After Web Configuration Tool starts, enter new IP Address and select Save.
 - a. 1-4 valve IO Module 0 = 192.168.123.1
 - b. 5-6 valve IO Module 1 = 192.168.123.2
8. Change Configuration parameter to Over EDS so it will load correct parameters from PLC on power up



9. Select SAVE

Vektex LLC 1334 East Sixth Ave. P.O. Box 625 Emporia, Ks. 66801 U.S.A.	Instruction Sheet	IS 5505	
		REV: B	
		ECN 5249	
		BY/DATE: KR	05/07/24
		APPR/DATE: RAJ	05/07/24
TITLE: CONFIGURATION OF IO MODULES, AWP, MCE			

10. Power down IO Module and Power up.
11. OPTIONAL: To check settings of IO Module, set PC network properties as follows.
 - a. IP Address: 192.168.123.xxx (3rd octet must be change to .123. to match IO Modules)
(xxx can be any number that does not conflict on the existing network)
 - b. Subnet Mask: 255.255.255.0
 - c. Default Gateway: 192.168.123.1



Vekttek LLC 1334 East Sixth Ave. P.O. Box 625 Emporia, Ks. 66801 U.S.A.	Instruction Sheet	IS 5505	
		REV: B	
		ECN 5249	
		BY/DATE: KR	05/07/24
		APPR/DATE: RAJ	05/07/24
TITLE: CONFIGURATION OF IO MODULES, AWP, MCE			

12. Open a web browser and enter the new IP Address in the URL field.
 - a. 1-4 valve IO Module 0 = 192.168.123.1
 - b. 5-6 valve IO Module 1 = 192.168.123.2

