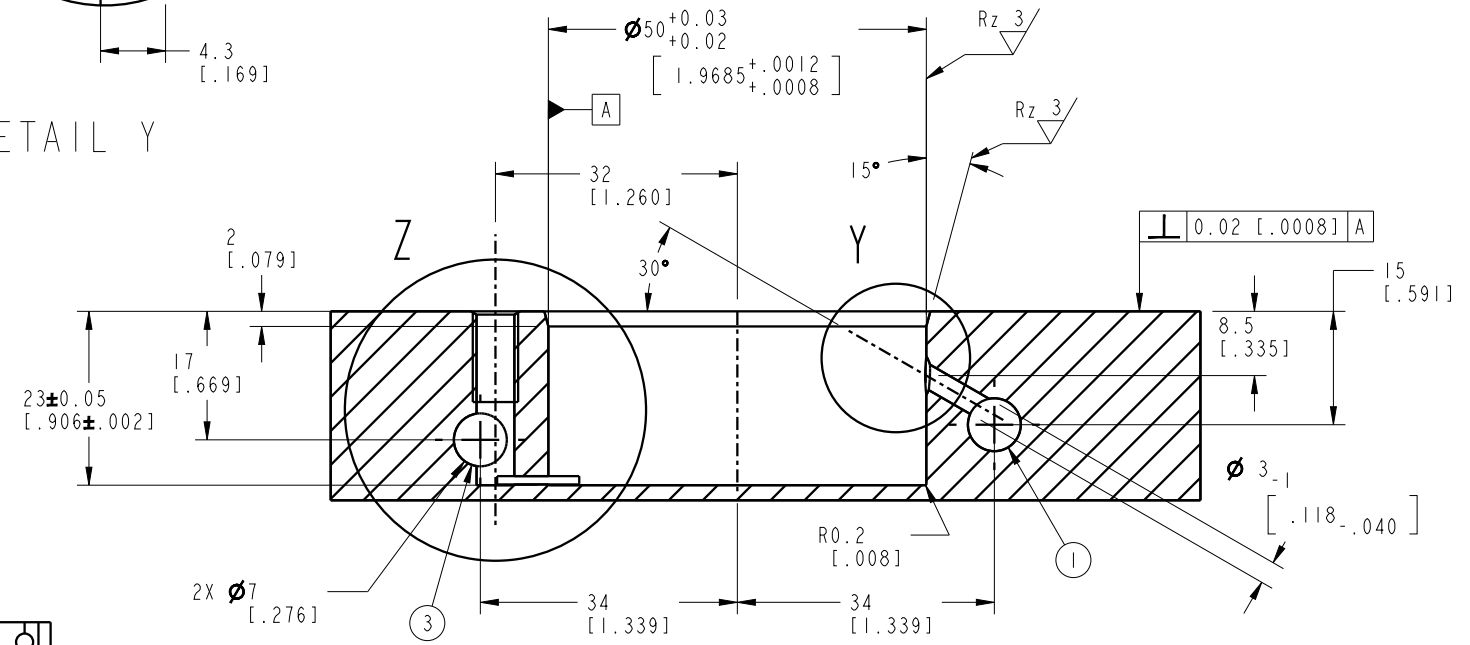
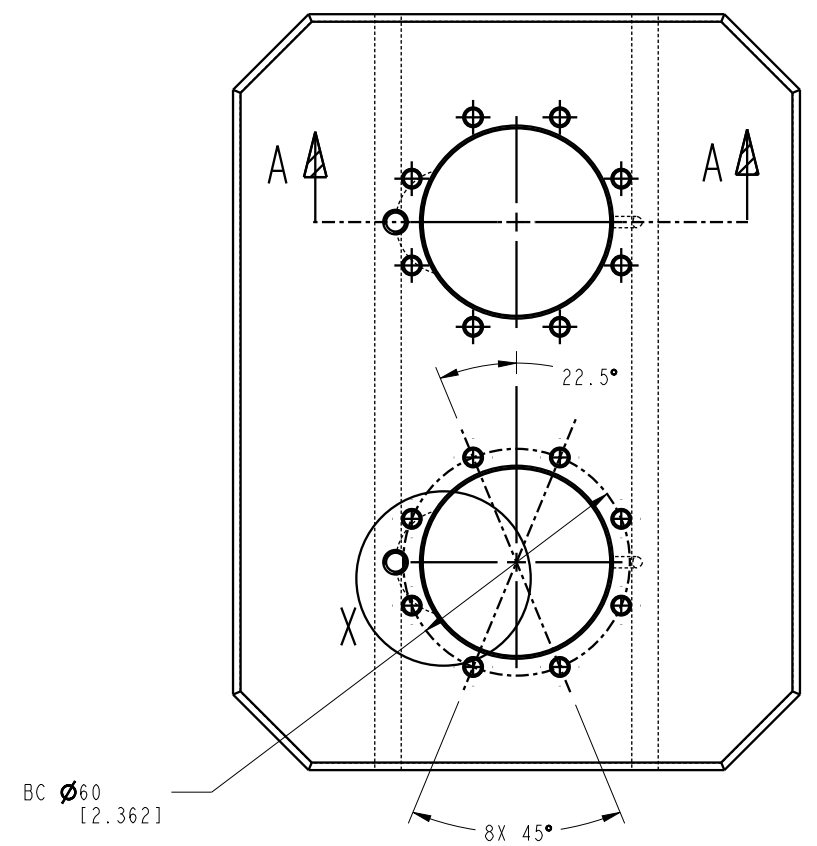
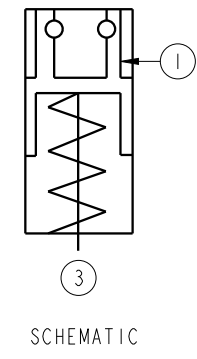


DETAIL Z

DETAIL Y



SECTION A-A

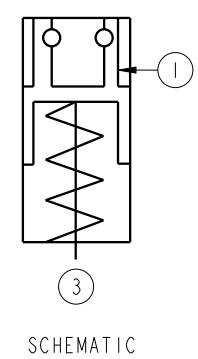
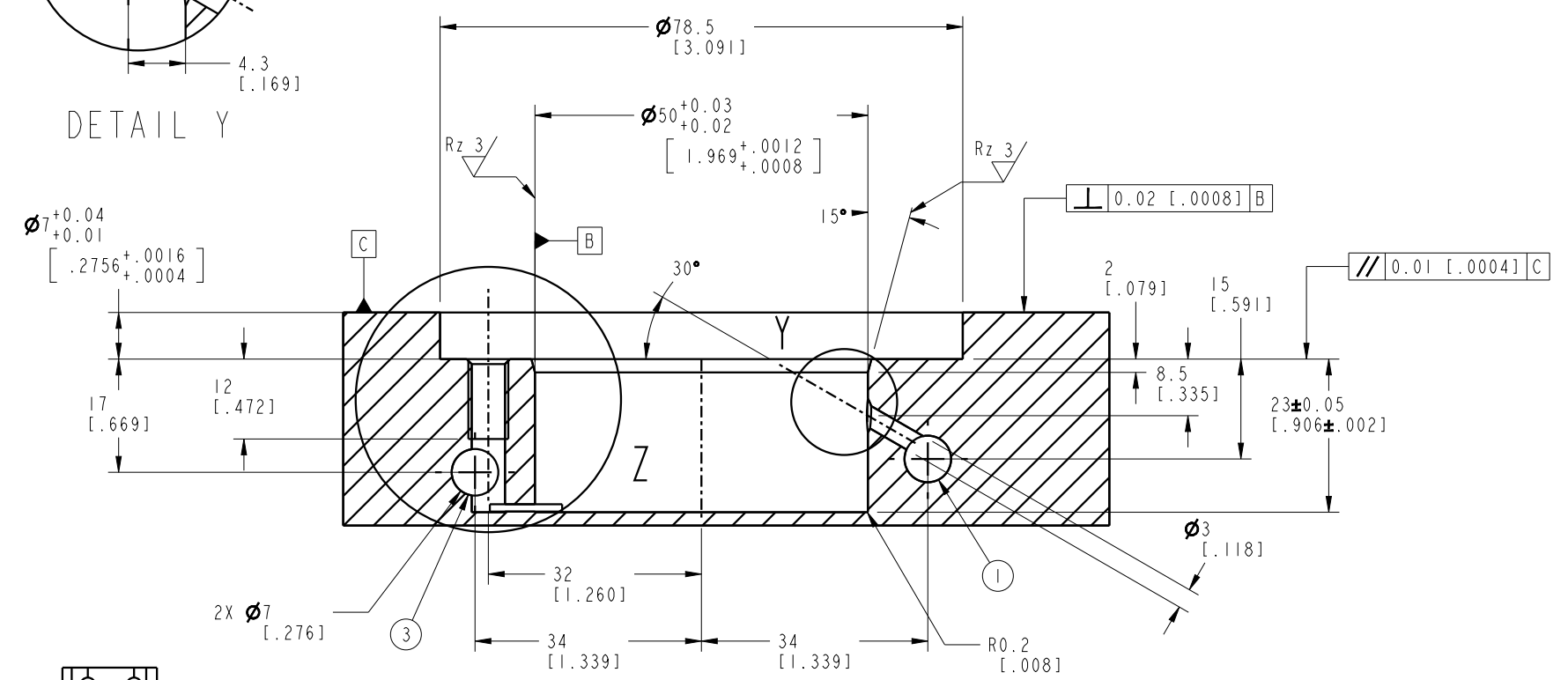
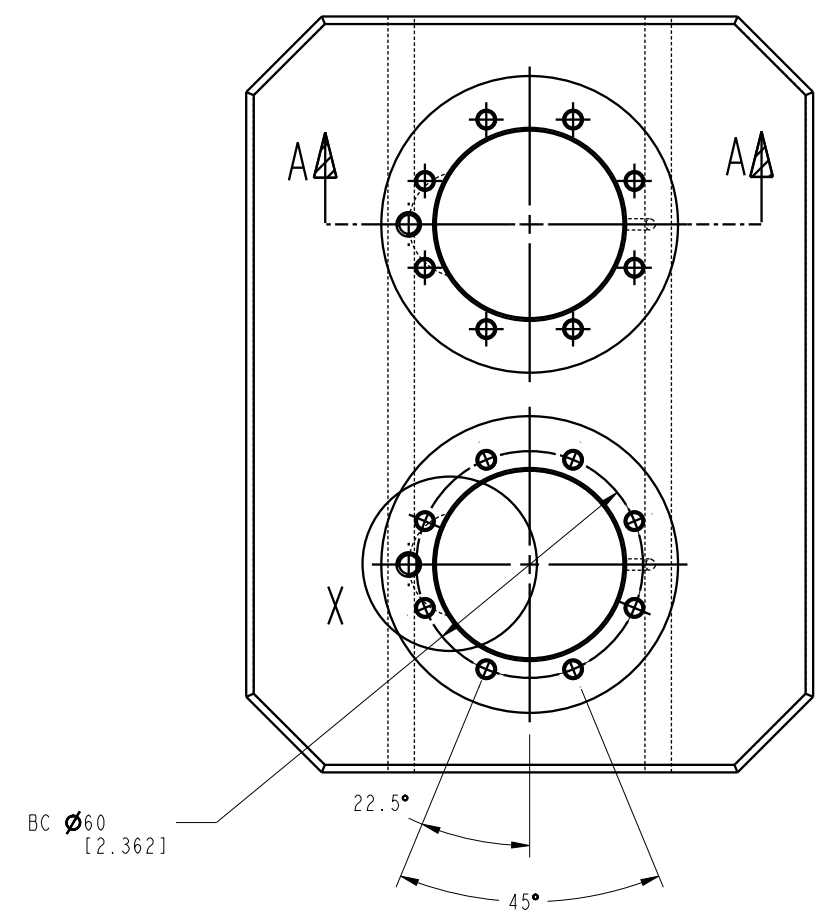
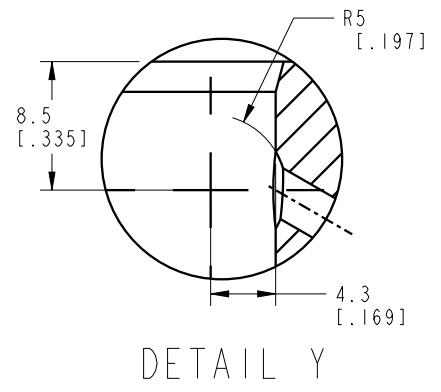
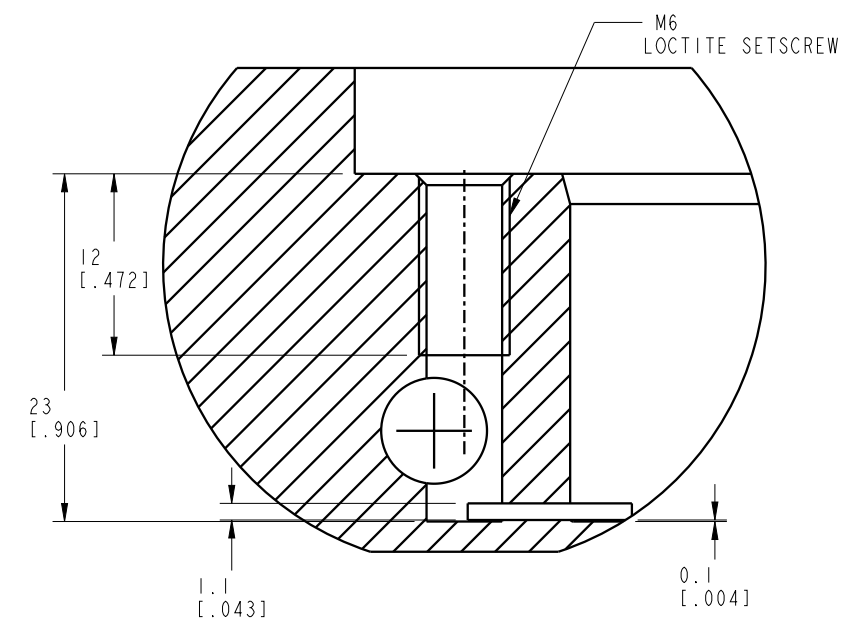
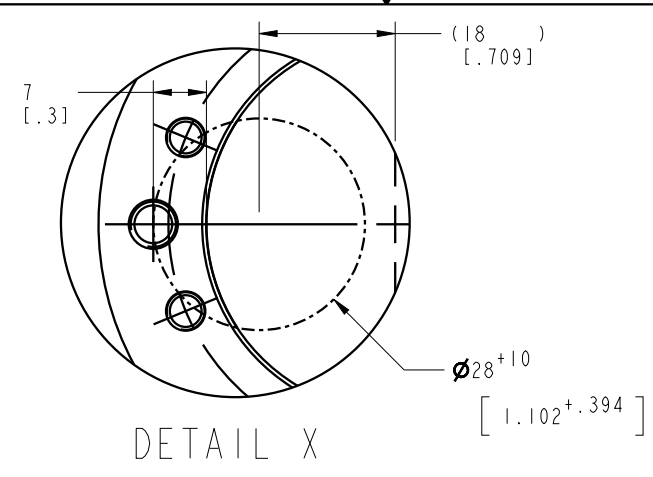
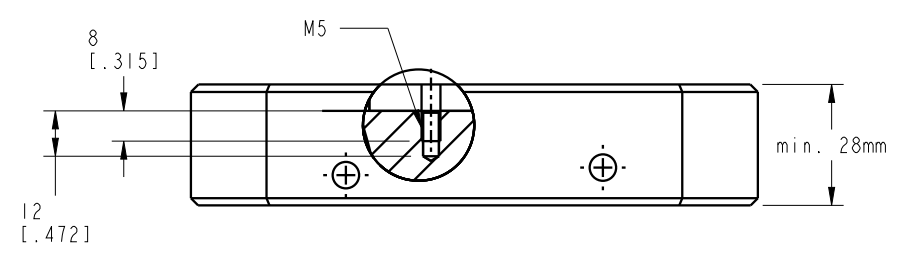


SCHEMATIC

NOTES:
 1. HYDR. PRESSURE FOR RELEASE.
 3. PNEUM. PRESSURE FOR BLOW OUT AND SUPPORT SENSING.

CAD CONTROL DRAWING			
		VEKTEK, INC. 1334 E. SIXTH AVE. P.O. BOX 625 EMPORIA, KS. 66801 U.S.A.	

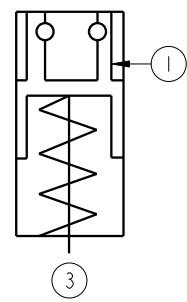
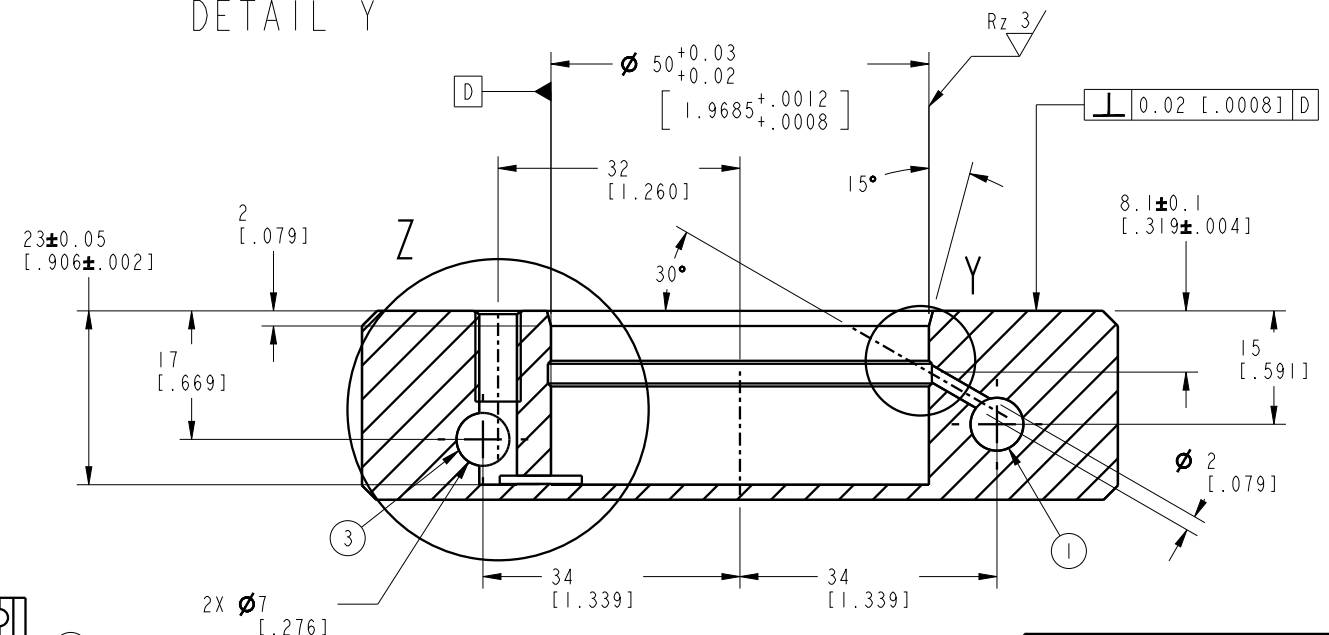
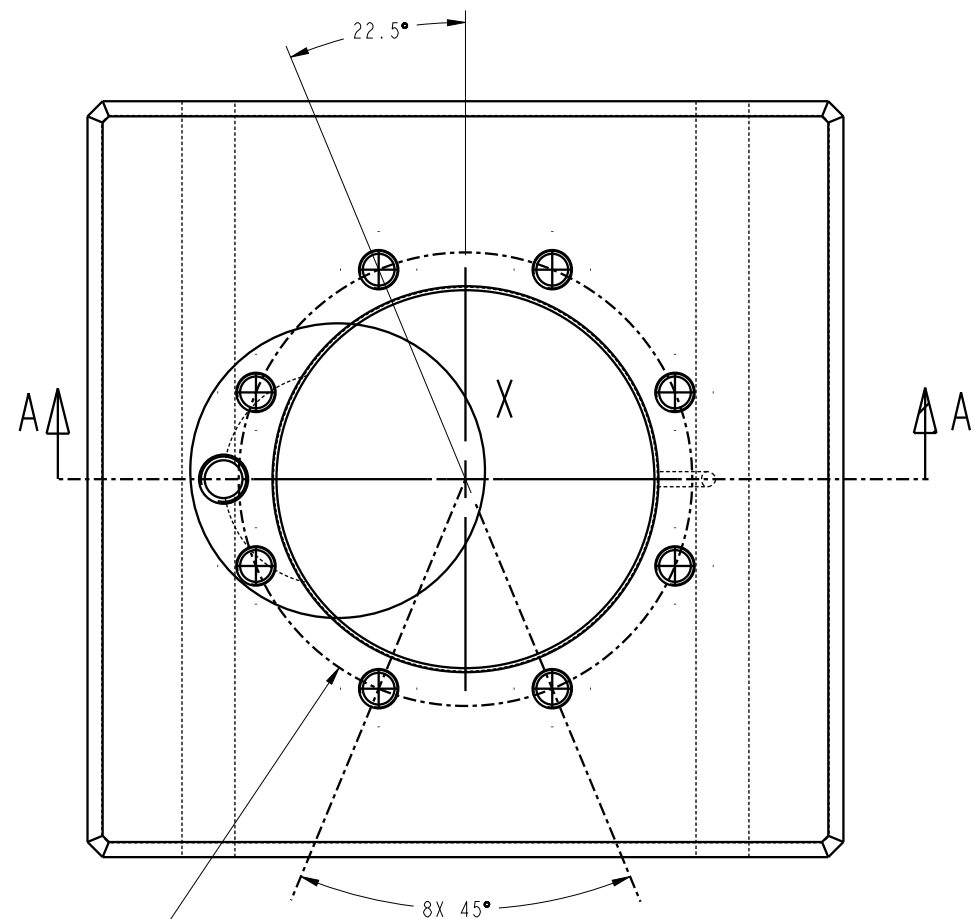
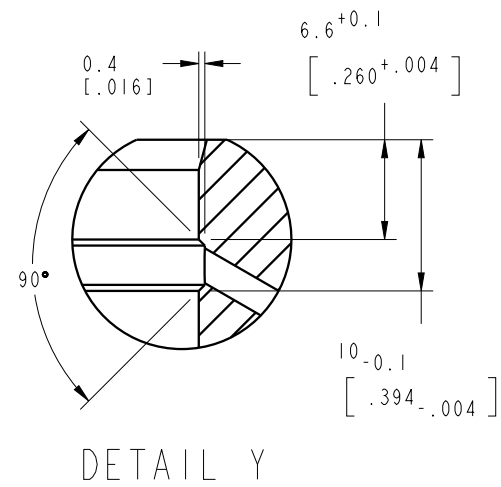
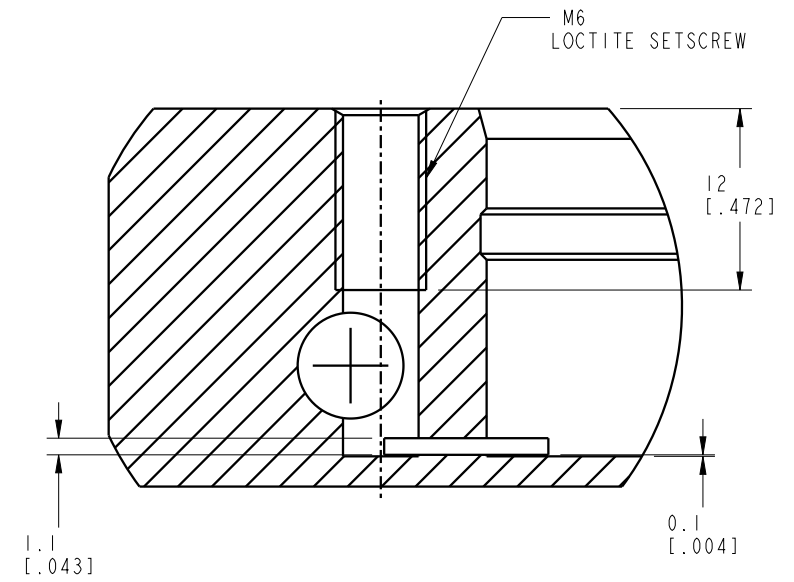
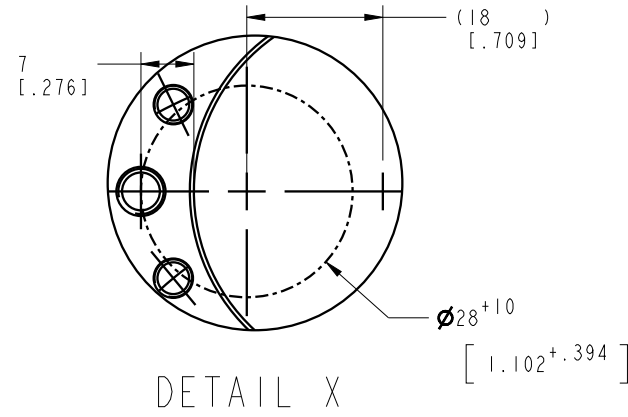
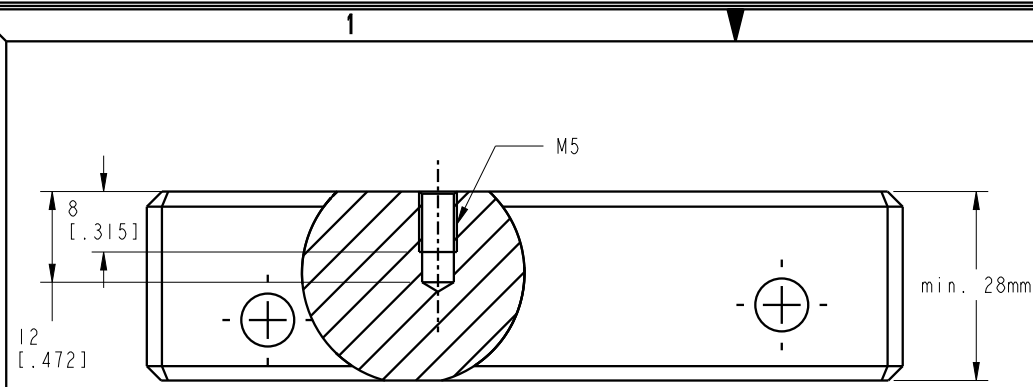
B	5304	RELEASE	RLK	5/14/24	570253	A	CAVITY INSTRUCTIONS
REV	IN ACCORDANCE WITH ECN	EFFECTIVE DATE	REVISED BY	DATE	REFERENCE MODEL	REF REV	ZPS, HYD, KH10
DRW BY:	RLK	DRAWING STATUS: Released		TOLERANCES DO NOT APPLY	UNITS	SIZE	ISM5700
DATE:	1/9/23	PRODUCTION APPROVED FOR RELEASED STATUS ONLY		DIMENSIONS ARE NOMINAL	mm [inch]	B	REV B



NOTES:
 1. HYDR. PRESSURE FOR RELEASE.
 3. PNEUM. PRESSURE FOR BLOW OUT AND SUPPORT SENSING.

CAD CONTROL DRAWING		VEKTEK® VEKTEK, INC. 1334 E. SIXTH AVE. P.O. BOX 625 EMPORIA, KS. 66801 U.S.A.	
B 5304	RELEASE	RLK	5/14/24
REV	IN ACCORDANCE WITH ECN	EFFECTIVE DATE	REVISED BY
DRW BY: RLK	DRAWING STATUS: Released		750253
DATE: 1/19/24	PRODUCTION APPROVED FOR RELEASED STATUS ONLY		A
TOLERANCES DO NOT APPLY DIMENSIONS ARE NOMINAL		UNITS mm [inch]	SIZE B
		FORM FEG036, Rev. C	REV B

SHEET 2 OF 3



NOTES:
 1. HYDR. PRESSURE FOR RELEASE.
 2. PNEUM. PRESSURE FOR BLOW OUT AND SUPPORT SENSING.

CAD CONTROL DRAWING

VEKTEK
 VEKTEK, INC.
 1334 E. SIXTH AVE. P.O. BOX 625
 EMPORIA, KS. 66801 U.S.A.

B	5304	RELEASE	RLK	5/14/24	570253	A	CAVITY INSTRUCTIONS, ALT
REV	IN ACCORDANCE WITH ECN	EFFECTIVE DATE	REVISED BY	DATE	REFERENCE MODEL	REF REV	ZPS, HYD, KH10
DRW BY:	RLK	DRAWING STATUS: Released			TOLERANCES DO NOT APPLY	UNITS	SIZE
DATE:	1/7/24	PRODUCTION APPROVED FOR RELEASED STATUS ONLY			DIMENSIONS ARE NOMINAL	mm [inch]	B
							ISM5700
							REV B