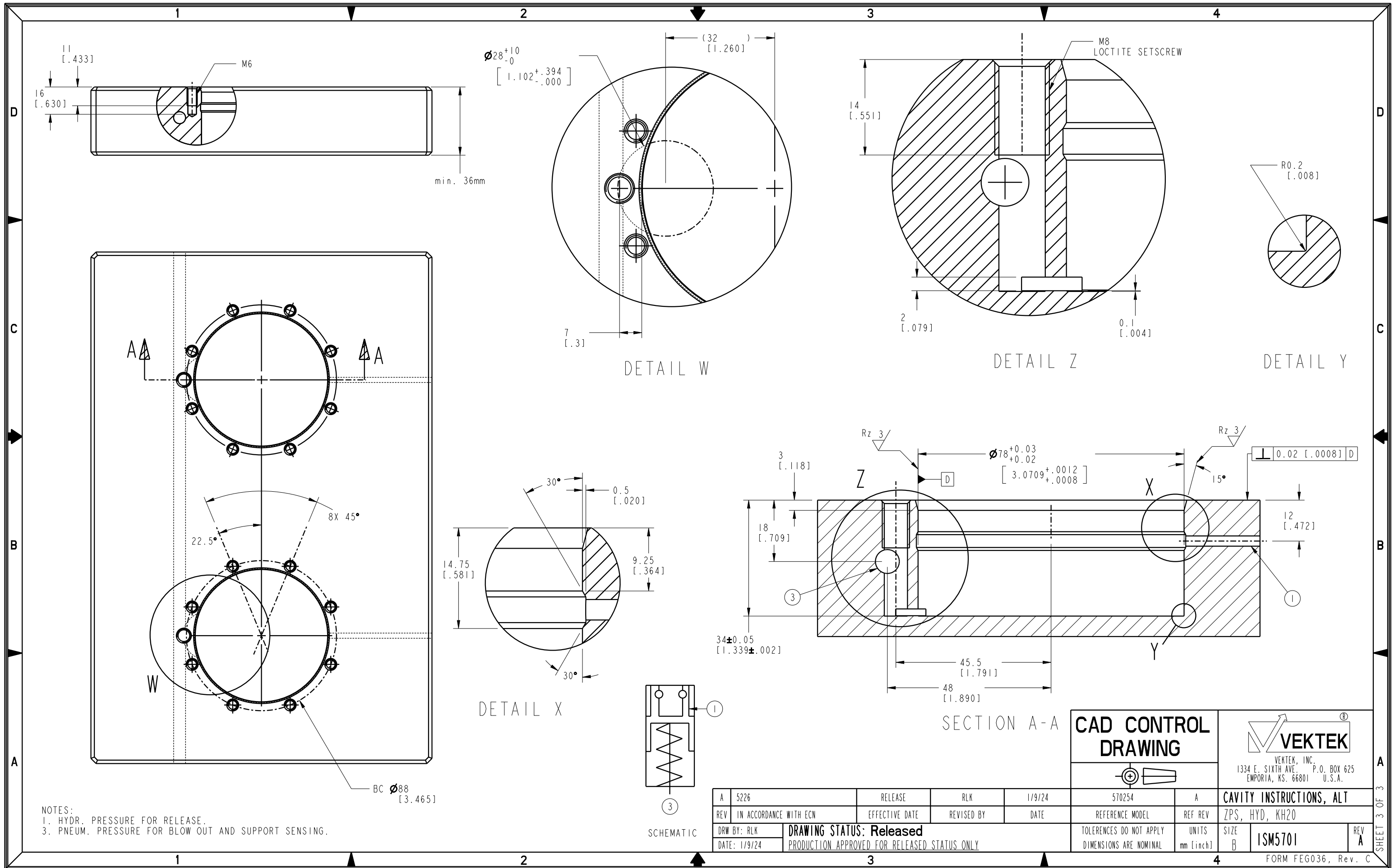


NOTES:
 1. HYDR. PRESSURE FOR RELEASE.
 3. PNEUM. PRESSURE FOR BLOW OUT AND SUPPORT SENSING.

CAD CONTROL DRAWING		VEKTEK VEKTEK, INC. 1334 E. SIXTH AVE. P.O. BOX 625 EMPORIA, KS. 66801 U.S.A.	
A	5226	RELEASE	RLK
REV	IN ACCORDANCE WITH ECN	EFFECTIVE DATE	REVISED BY
DATE: 1/9/23	DRAWING STATUS: Released		1/9/23
TOLERANCES DO NOT APPLY DIMENSIONS ARE NOMINAL		UNITS mm [inch]	SIZE B
570254		REF REV	A
CAVITY INSTRUCTIONS		ZPS, HYD, KH20	
FORM FEG036, Rev. C		REV A	

570254	A	CAVITY INSTRUCTIONS
ZPS, HYD, KH20	REF REV	UNITS
mm [inch]	SIZE	B
FORM FEG036, Rev. C	REV	A



NOTES:
 1. HYDR. PRESSURE FOR RELEASE.
 2. HYDR. PRESSURE FOR BLOW OUT AND SUPPORT SENSING.
 3. PNEUM. PRESSURE FOR BLOW OUT AND SUPPORT SENSING.

A	5226	RELEASE	RLK	1/9/24	570254	A	CAVITY INSTRUCTIONS, ALT
REV	IN ACCORDANCE WITH ECN	EFFECTIVE DATE	REVISED BY	DATE	REFERENCE MODEL	REF REV	ZPS, HYD, KH20
DRW BY:	RLK	DRAWING STATUS: Released			TOLERANCES DO NOT APPLY	UNITS	SIZE
DATE:	1/9/24	PRODUCTION APPROVED FOR RELEASED STATUS ONLY			DIMENSIONS ARE NOMINAL	mm [inch]	B

CAD CONTROL DRAWING

VEKTEK
 VEKTEK, INC.
 1334 E. SIXTH AVE. P.O. BOX 625
 EMPORIA, KS. 66801 U.S.A.