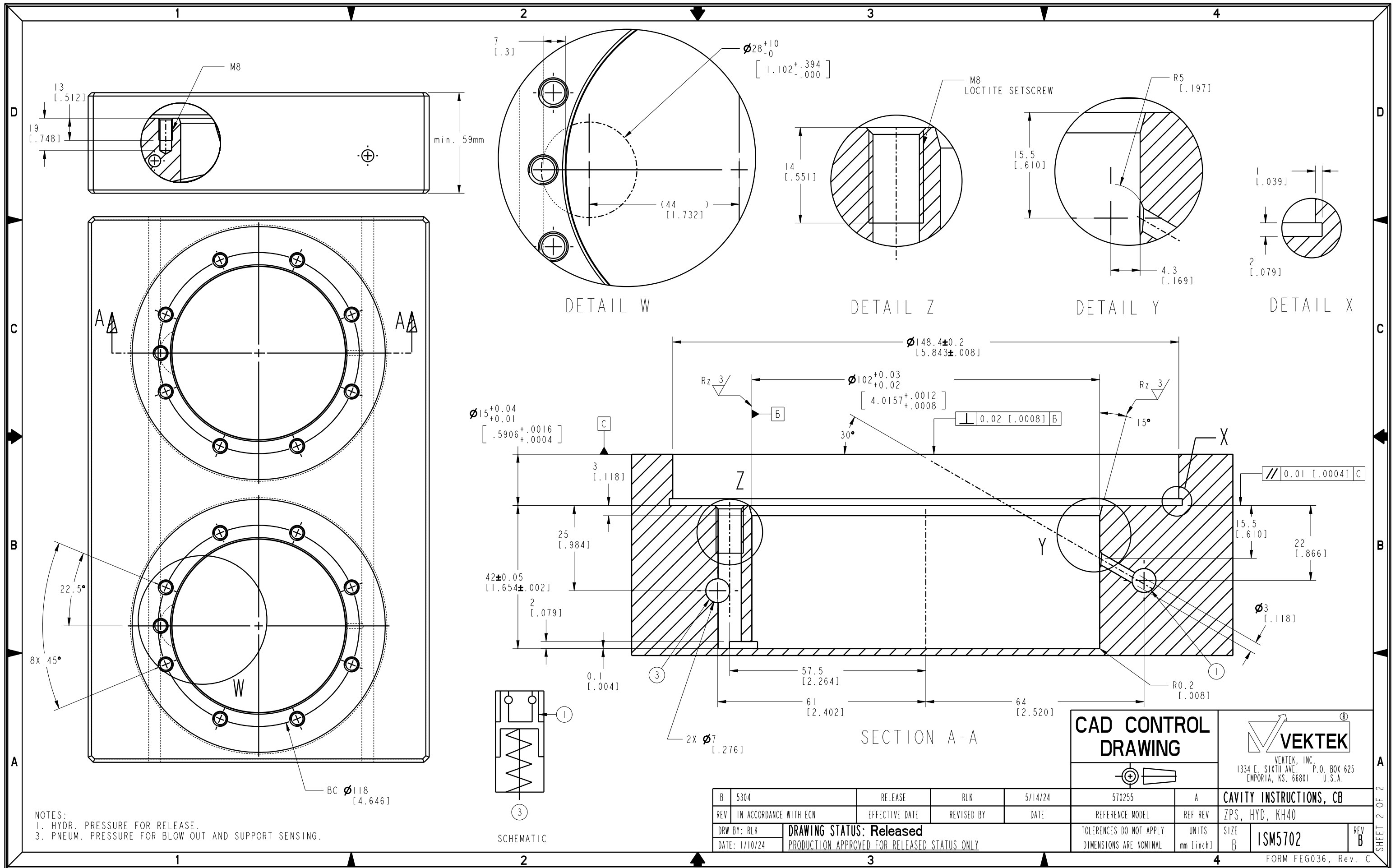


NOTES:
 1. HYDR. PRESSURE FOR RELEASE.
 3. PNEUM. PRESSURE FOR BLOW OUT AND SUPPORT SENSING.

CAD CONTROL DRAWING		VEKTEK VEKTEK, INC. 1334 E. SIXTH AVE. P.O. BOX 625 EMPORIA, KS. 66801 U.S.A.	
B 5304	RELEASE	RLK	5/14/24
REV IN ACCORDANCE WITH ECN	EFFECTIVE DATE	REVISED BY	DATE
DRW BY: RLK	DRAWING STATUS: Released		570255
DATE: 1/10/23	PRODUCTION APPROVED FOR RELEASED STATUS ONLY		A
	TOLERANCES DO NOT APPLY DIMENSIONS ARE NOMINAL	UNITS mm [inch]	SIZE B
			FORM FEG036, Rev. C

SHEET 1 OF 2



NOTES:
 1. HYDR. PRESSURE FOR RELEASE.
 3. PNEUM. PRESSURE FOR BLOW OUT AND SUPPORT SENSING.

CAD CONTROL DRAWING

VEKTEK
 VEKTEK, INC.
 1334 E. SIXTH AVE. P.O. BOX 625
 EMPORIA, KS. 66801 U.S.A.

B	5304	RELEASE	RLK	5/14/24	570255	A	CAVITY INSTRUCTIONS, CB
REV	IN ACCORDANCE WITH ECN	EFFECTIVE DATE	REVISED BY	DATE	REFERENCE MODEL	REF REV	ZPS, HYD, KH40
DRW BY:	RLK	DRAWING STATUS: Released			TOLERANCES DO NOT APPLY	UNITS	SIZE
DATE:	1/10/24	PRODUCTION APPROVED FOR RELEASED STATUS ONLY			DIMENSIONS ARE NOMINAL	mm [inch]	B
					FORM FEG036, Rev. C	REV	B

SHEET 2 OF 2