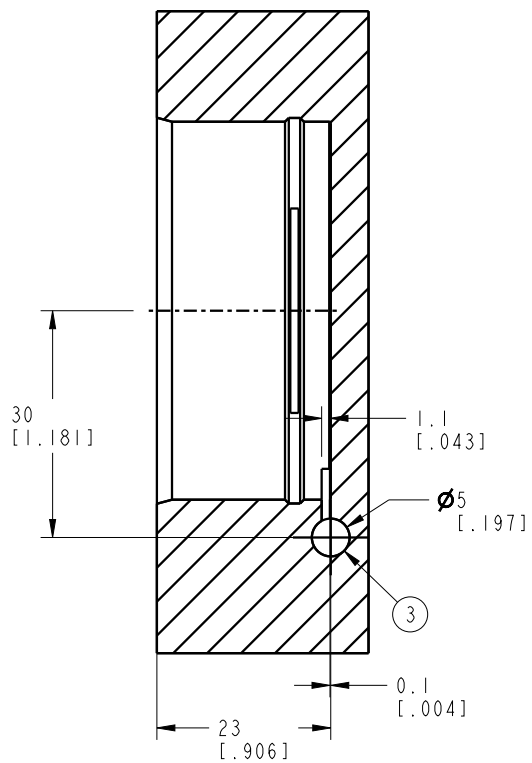
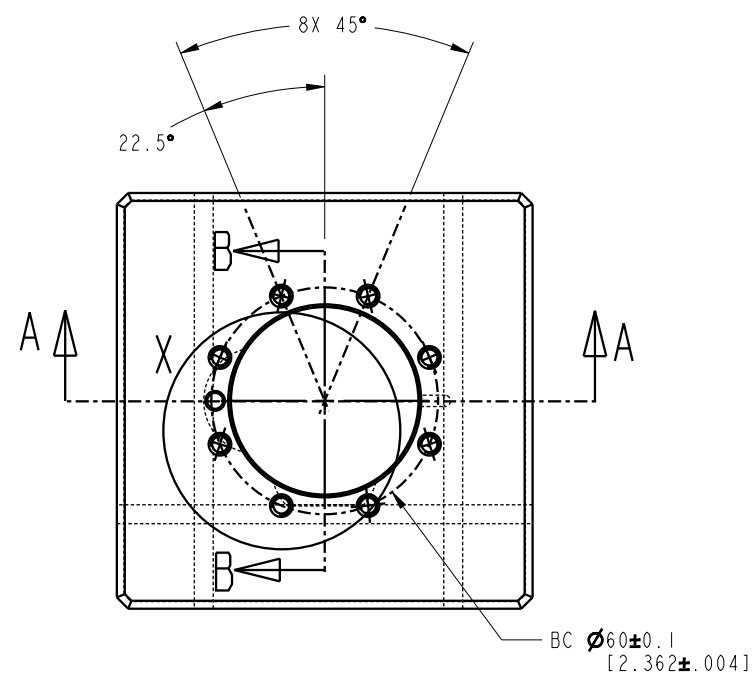


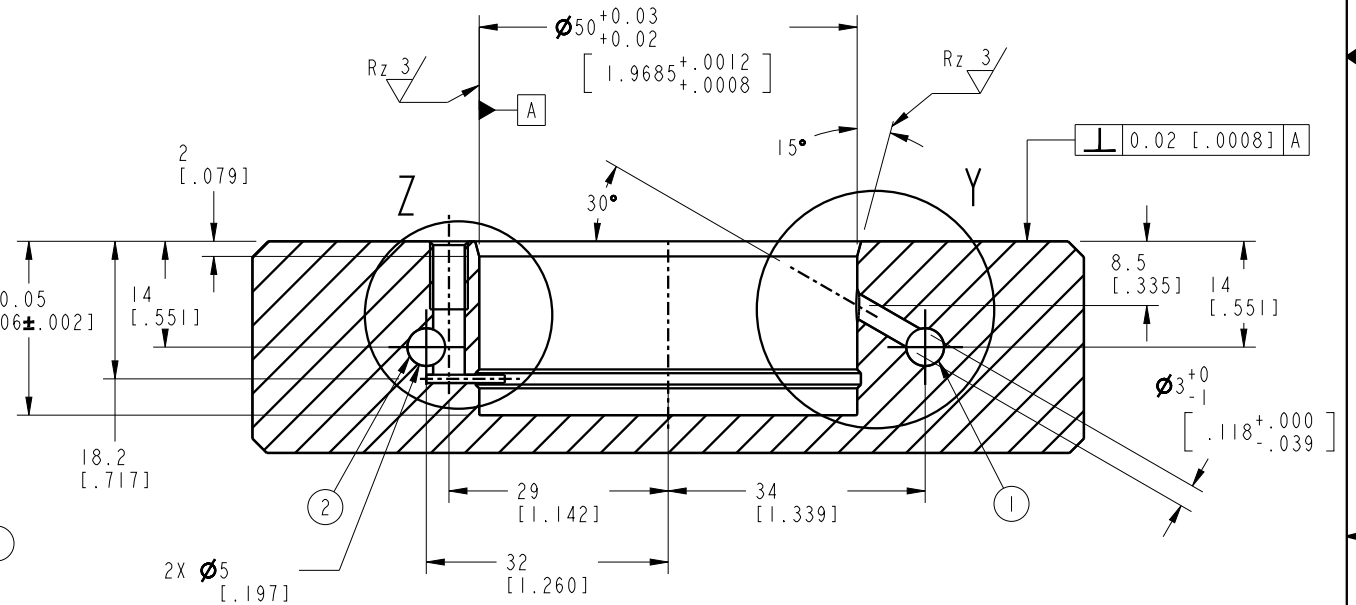
DETAIL X

DETAIL Y

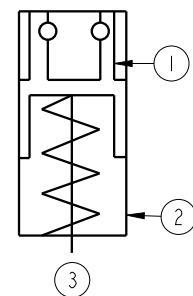
DETAIL Z



SECTION B-B



SECTION A-A



SCHEMATIC

NOTES:  
 1. PNEUM. PRESSURE FOR RELEASE.  
 2. PNEUM. PRESSURE RETENSING.  
 3. PNEUM. PRESSURE FOR BLOW OUT AND SUPPORT SENSING.

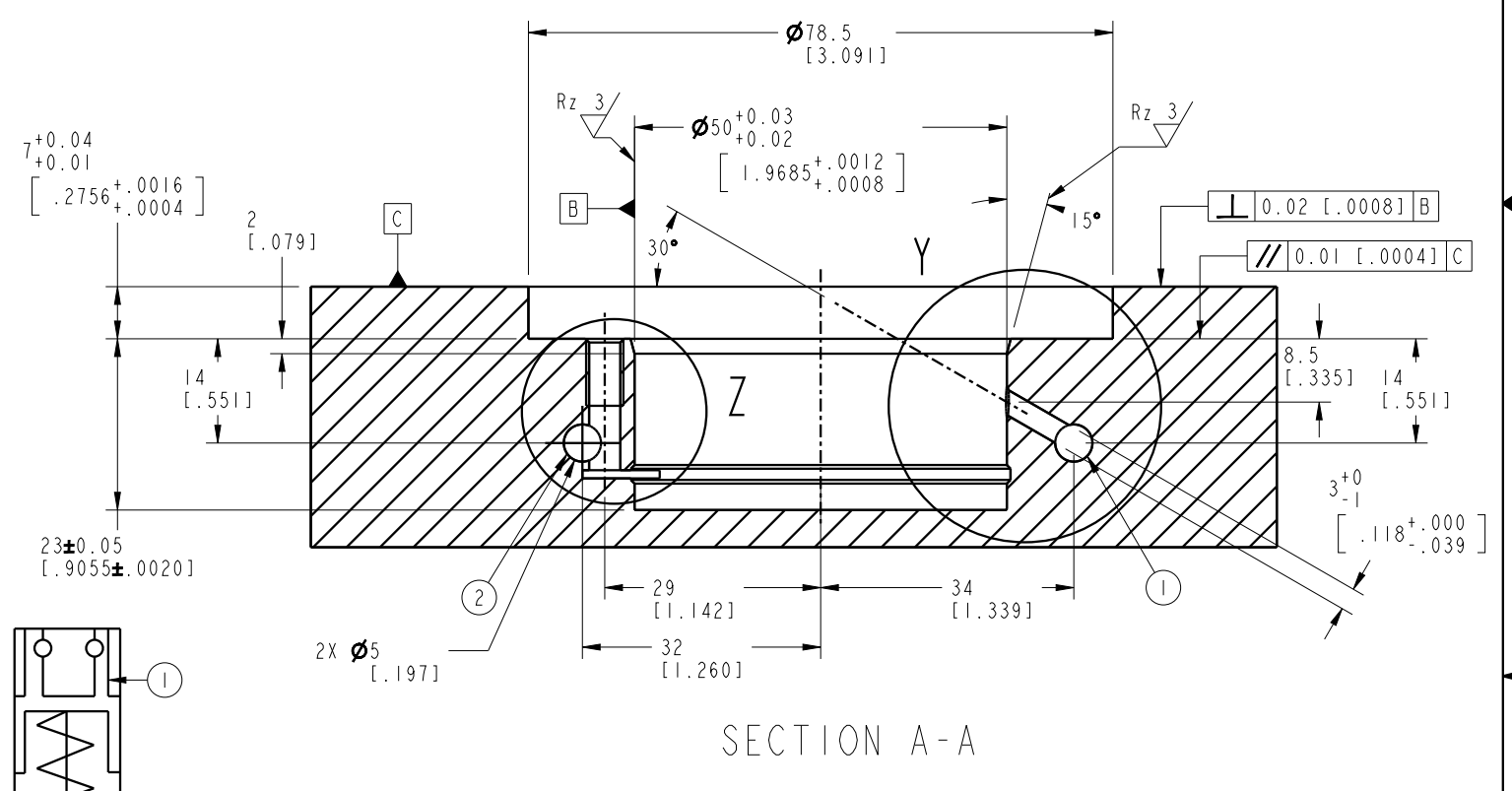
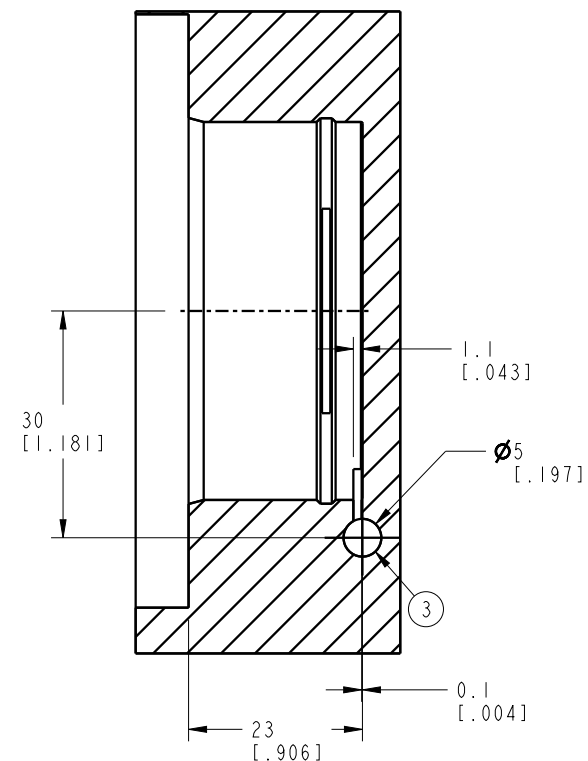
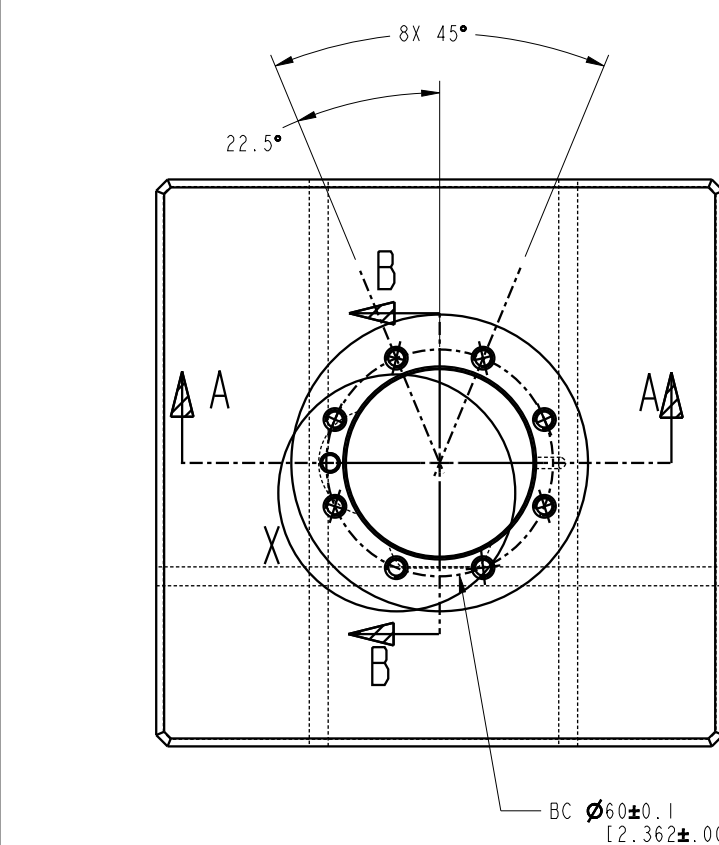
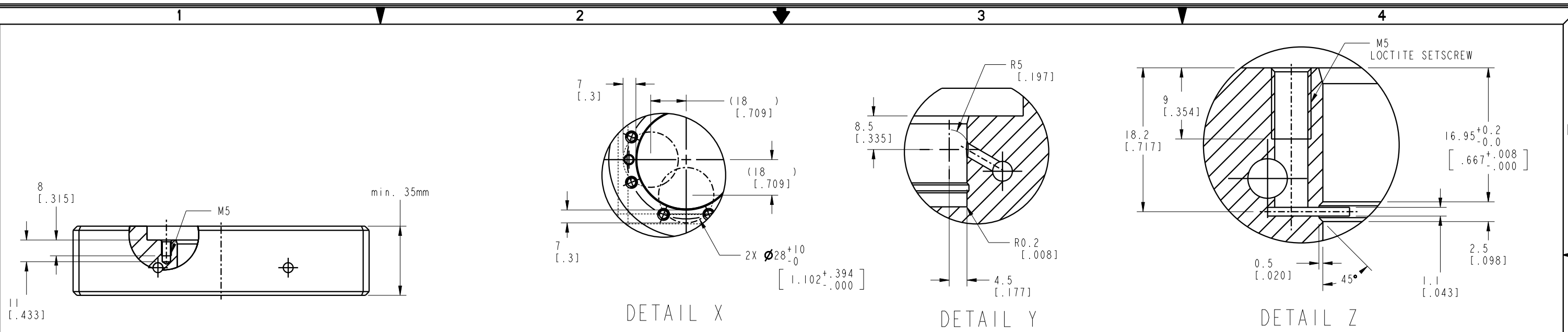
CAD CONTROL  
DRAWING



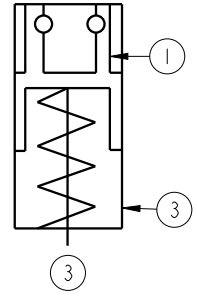
VEKTEK, INC.  
 1334 E. SIXTH AVE. P.O. BOX 625  
 EMPORIA, KS. 66801 U.S.A.

C	5578	RELEASE	NPETERS	11/14/24	570256	A	CAVITY INSTRUCTIONS
REV	IN ACCORDANCE WITH ECN	EFFECTIVE DATE	REVISED BY	DATE	REFERENCE MODEL	REF REV	ZPS, PNEU, KP10
DRW BY:	RLK	DRAWING STATUS: Released			TOLERANCES DO NOT APPLY	UNITS	SIZE
DATE:	1/10/23	PRODUCTION APPROVED FOR RELEASED STATUS ONLY			DIMENSIONS ARE NOMINAL	mm [inch]	B
							ISM5703
							FORM FEG036, Rev. C

SHEET 1 OF 2



NOTES:  
 1. PNEUM. PRESSURE FOR RELEASE.  
 2. PNEUM. PRESSURE RETENSIONING.  
 3. PNEUM. PRESSURE FOR BLOW OUT AND SUPPORT SENSING.



CAD CONTROL DRAWING		VEKTEK® VEKTEK, INC. 1334 E. SIXTH AVE. P.O. BOX 625 EMPORIA, KS. 66801 U.S.A.	
C 5578	RELEASE	NPETERS	11/14/24
REV IN ACCORDANCE WITH ECN	EFFECTIVE DATE	REVISED BY	DATE
DRW BY: RLK	DRAWING STATUS: Released		570256
DATE: 1/10/24	PRODUCTION APPROVED FOR RELEASED STATUS ONLY		A
TOLERANCES DO NOT APPLY DIMENSIONS ARE NOMINAL		UNITS mm [inch]	SIZE B
FORM FEG036, Rev. C		CAVITY INSTRUCTIONS, CB	REV C

SHEET 2 OF 2