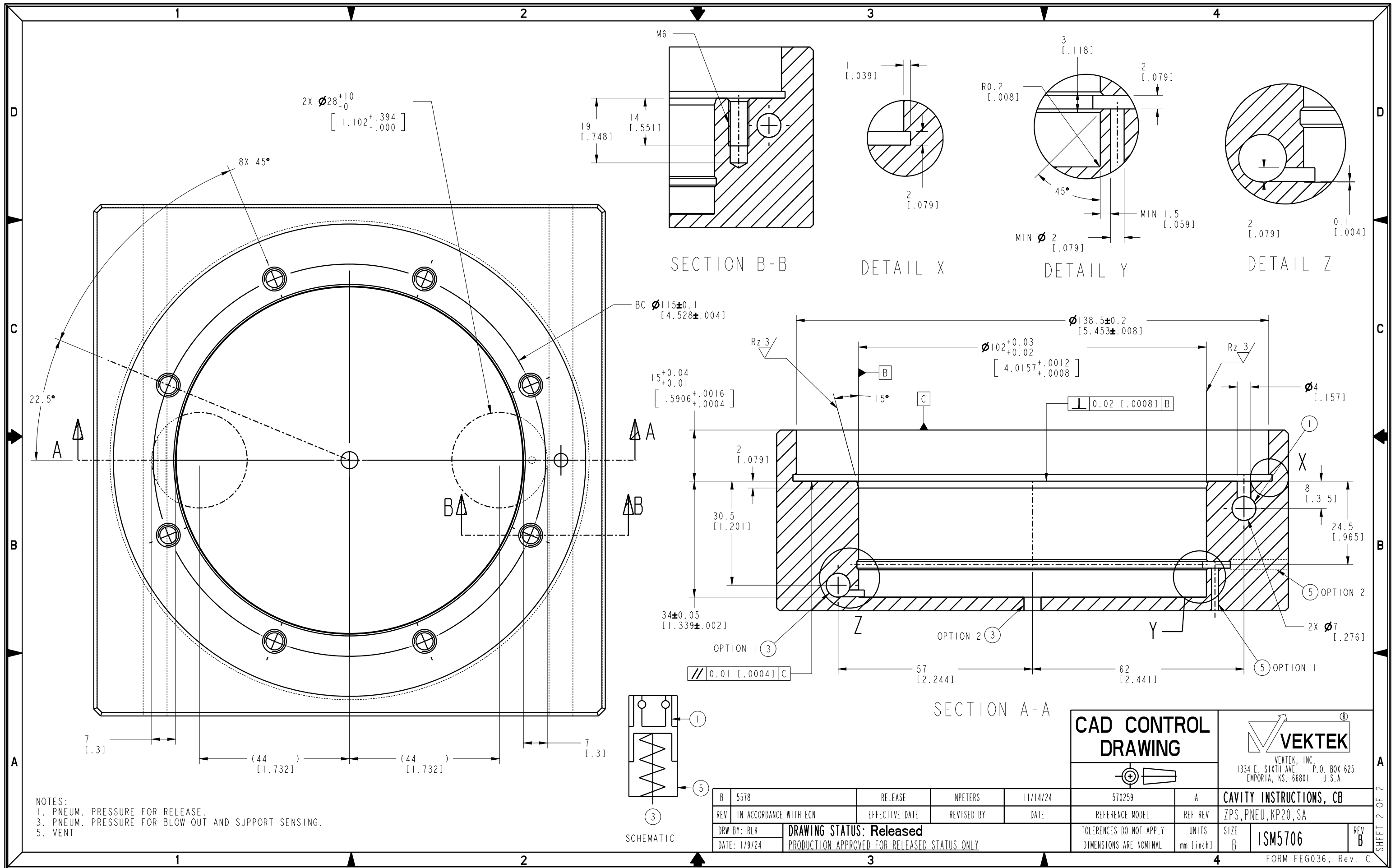


<b>CAD CONTROL DRAWING</b>		<b>VEKTEK</b> VEKTEK, INC. 1334 E. SIXTH AVE. P.O. BOX 625 EMPORIA, KS. 66801 U.S.A.	
B	5578	RELEASE	NPETERS
REV	IN ACCORDANCE WITH ECN	EFFECTIVE DATE	REVISED BY
DATE	1/9/23	11/14/24	
570259	A	<b>CAVITY INSTRUCTIONS</b>	
REFERENCE MODEL	REF REV	ZPS,PNEU,KP20,SA	
TOLERANCES DO NOT APPLY DIMENSIONS ARE NOMINAL	UNITS mm [inch]	SIZE B	REV B
DRAWING STATUS: <b>Released</b> PRODUCTION APPROVED FOR RELEASED STATUS ONLY		FORM FEG036, Rev. C	

SHEET 1 OF 2



NOTES:  
 1. PNEUM. PRESSURE FOR RELEASE.  
 2. PNEUM. PRESSURE FOR BLOW OUT AND SUPPORT SENSING.  
 3. VENT

CAD CONTROL DRAWING		VEKTEK® VEKTEK, INC. 1334 E. SIXTH AVE., P.O. BOX 625 EMPORIA, KS. 66801 U.S.A.	
B 5578	RELEASE	NPETERS	11/14/24
REV IN ACCORDANCE WITH ECN	EFFECTIVE DATE	REVISED BY	DATE
DRW BY: RLK	DRAWING STATUS: Released		570259
DATE: 1/9/24	PRODUCTION APPROVED FOR RELEASED STATUS ONLY		A
TOLERANCES DO NOT APPLY DIMENSIONS ARE NOMINAL		UNITS mm [inch]	SIZE B
CAVITY INSTRUCTIONS, CB		ZPS, PNEU, KP20, SA	ISM5706
FORM FEG036, Rev. C		REV B	SHEET 2 OF 2