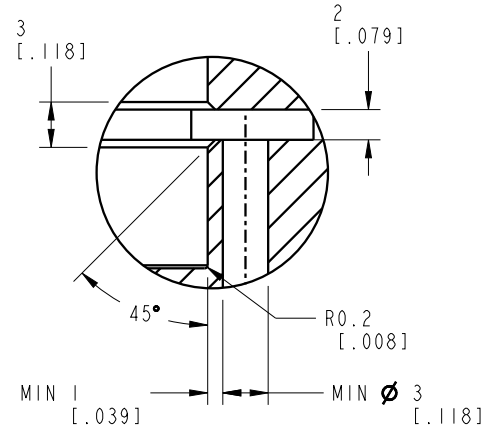
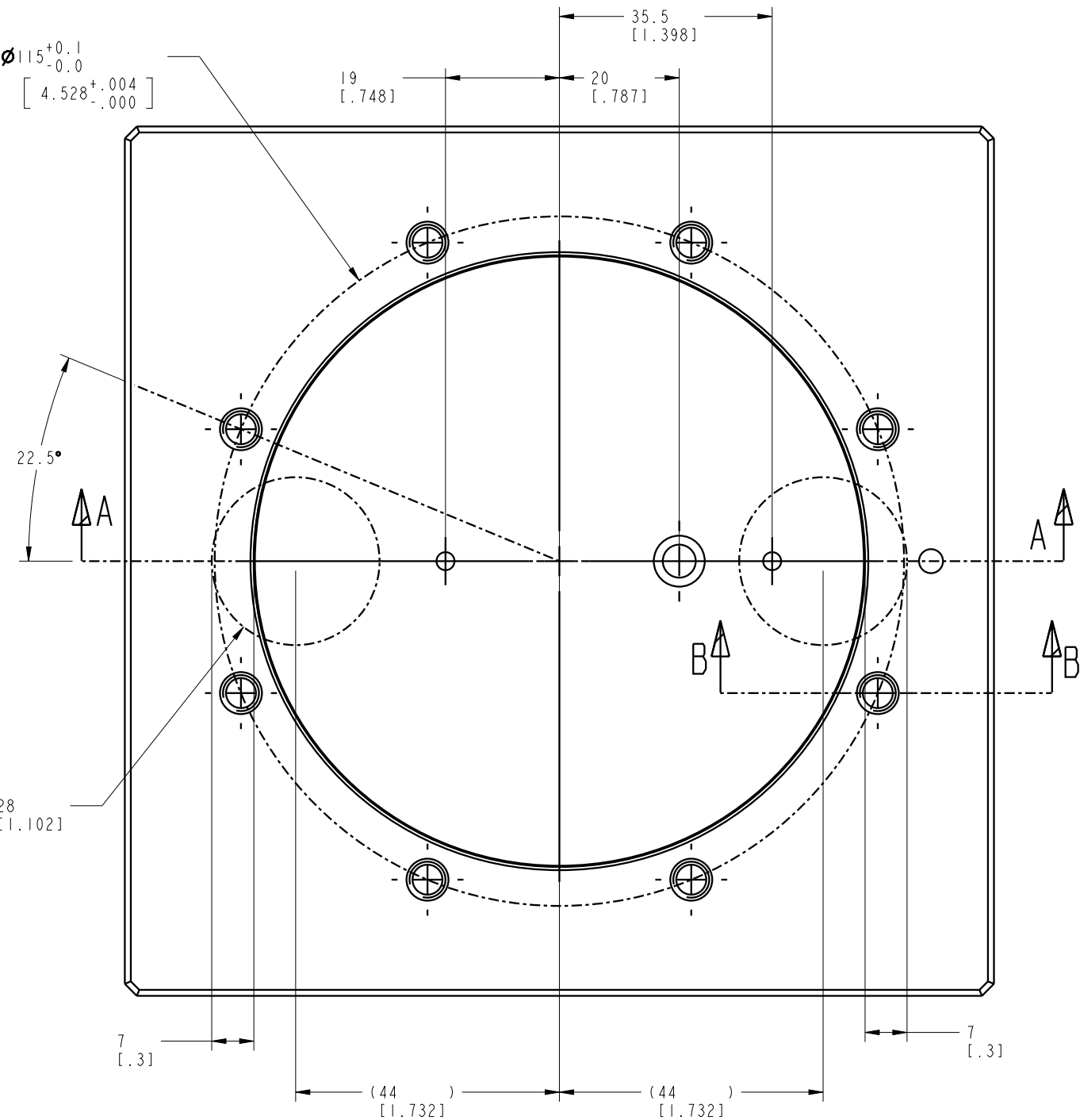
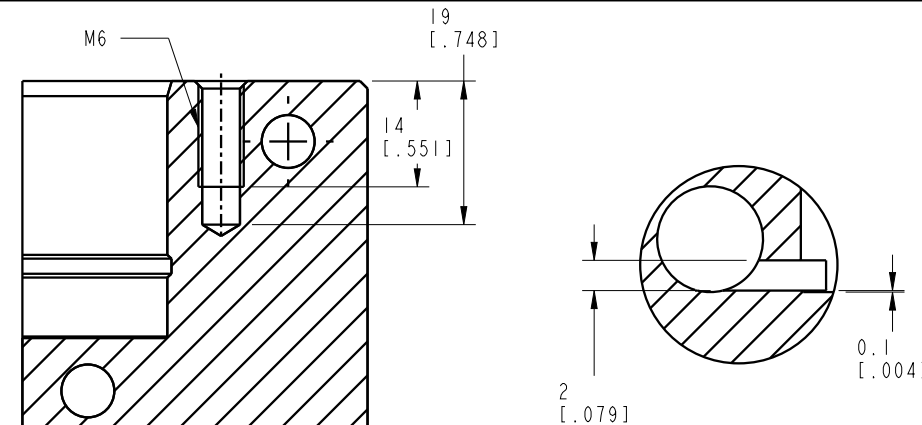


BC $\varnothing 115^{+0.1}_{-0.0}$
[4.528^{+.004}_{-.000}]

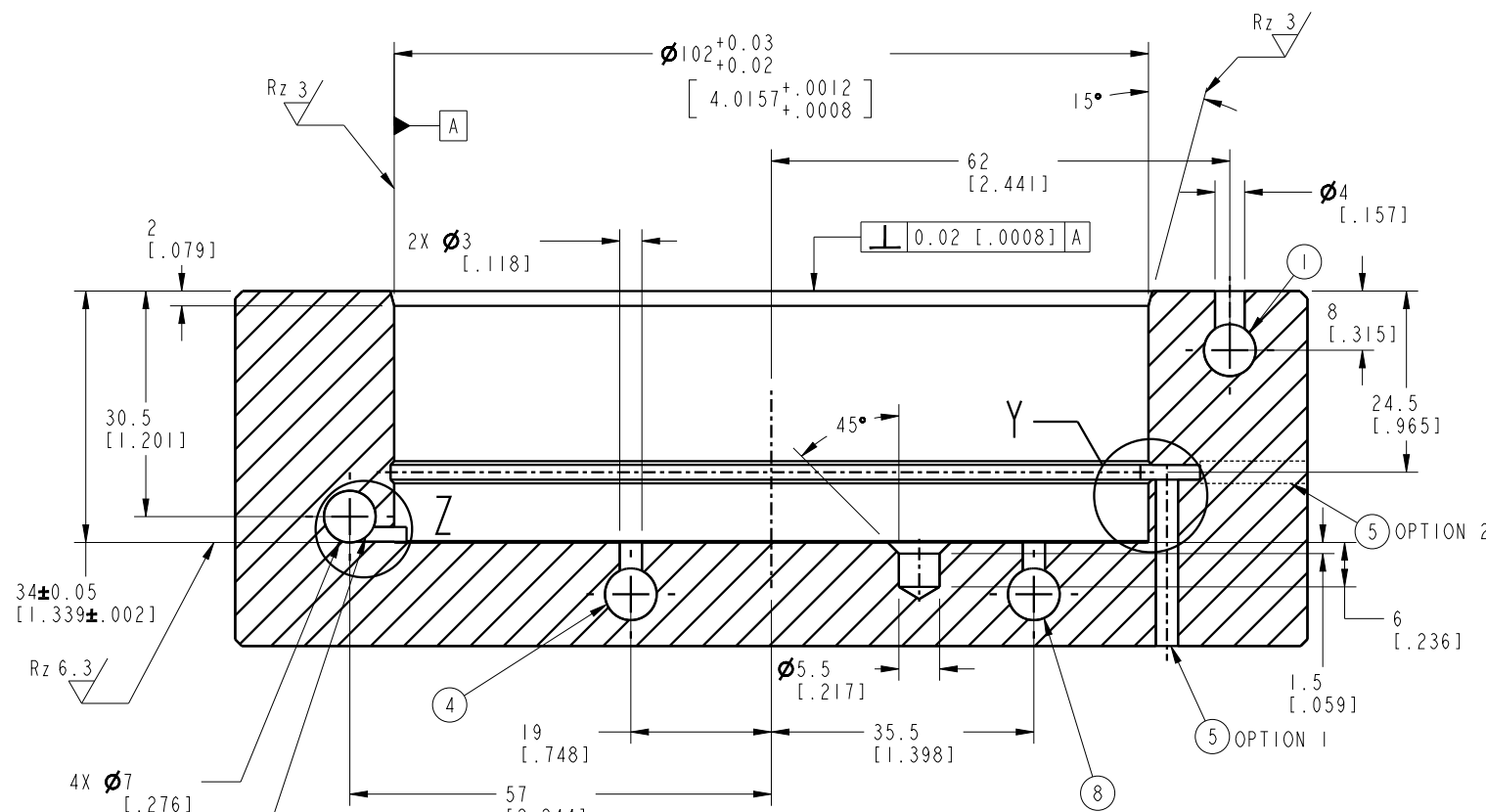


DETAIL Y

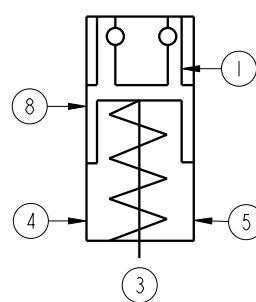


SECTION B-B

DETAIL Z



SECTION A-A



SCHEMATIC

- NOTES:
 1. PNEUM. PRESSURE FOR RELEASE.
 2. PNEUM. PRESSURE FOR BLOW OUT AND SUPPORT SENSING.
 3. PNEUM. PRESSURE FOR OPEN SENSING.
 4. VENT
 5. PNEUM. PRESSURE LOCKING SENSING.

CAD CONTROL
DRAWING



VEKTEK, INC.
1334 E. SIXTH AVE., P.O. BOX 625
EMPORIA, KS. 66801 U.S.A.

B	5515	RELEASE	NPETERS	9/18/24	570260	A	CAVITY INSTRUCTIONS
REV	IN ACCORDANCE WITH ECN	EFFECTIVE DATE	REVISED BY	DATE	REFERENCE MODEL	REF REV	ZPS,PNEU,KP20,SA,SENSING
DRW BY:	RLK	DRAWING STATUS: Released			TOLERANCES DO NOT APPLY	UNITS	SIZE
DATE:	1/9/24	PRODUCTION APPROVED FOR RELEASED STATUS ONLY			DIMENSIONS ARE NOMINAL	mm [inch]	B
							ISM5707
							FORM FEG036, Rev. C

SHEET 1 OF 1