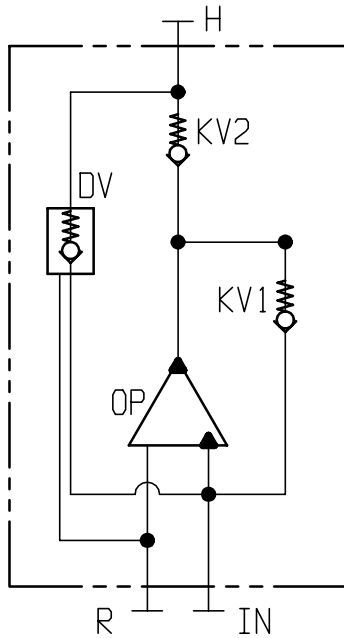
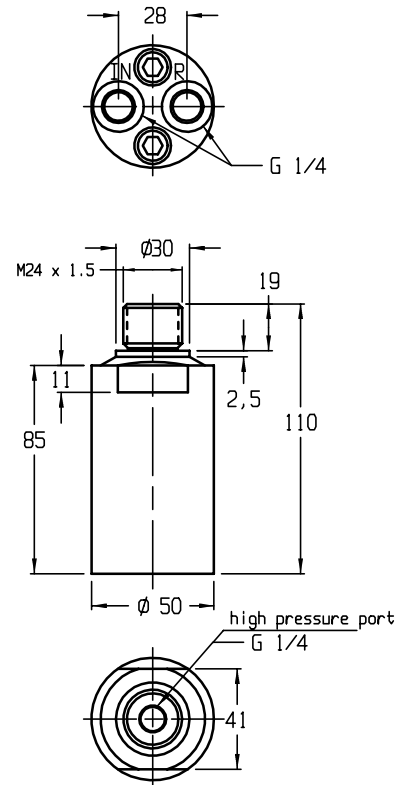


Operating Manual : Hydraulic-Intensifier No. 6903

Hydraulic circuit:



Dimensions



Design:

For tube connection, all Hydraulic ports are G 1/4". Housing out of GGG40, galvanized and chromate. Piston and seat valve made of steel.

Application:

Hydraulic intensifiers are used to pressurize hydraulic clamping fixtures. The low pressure of the tooling machine's hydraulic system will be converted into a higher operating pressure according to the ratio. Input pressure and output pressure are proportional, meaning output pressure can be adjusted by the input pressure.