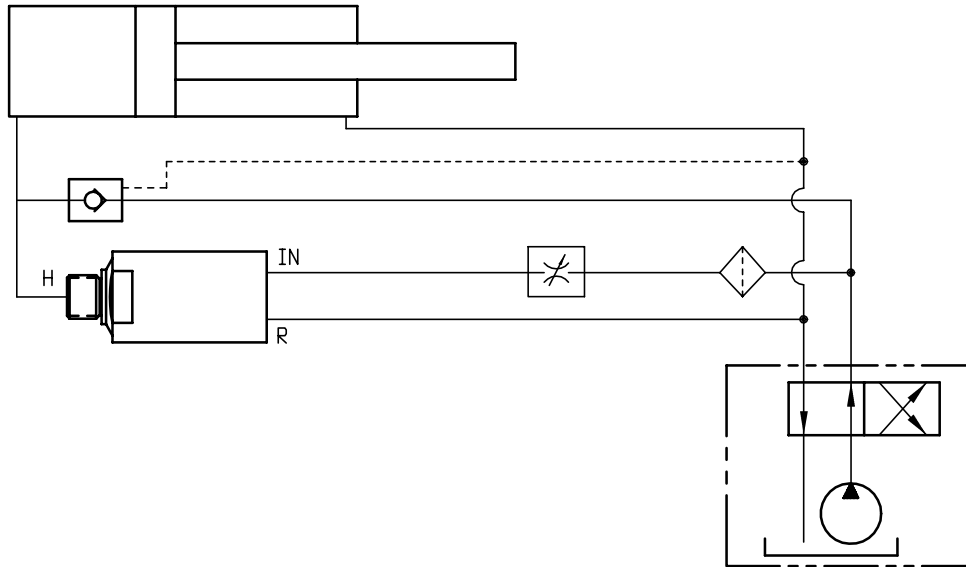


The intensifier can be used in facilities, where the oil flow at the input side is significantly higher. In this case, the input oil flow will be guided direct to the cylinder by a pilot controlled check valve. If the cylinder has reached the clamping position, the check valve closes, and the final pressure will be produced by the intensifier.



Installation:

For mounting the fitting into the ports IN, R, and H, the intensifier shall be held by a vise.

Torque for mounting the fittings:

	Port IN, R, and H
With steel washer	40 Nm
With cutting edge	40 Nm
With aluminium washer	30 Nm
With USIT-Ring	40 Nm
With O-Ring	20 Nm

Please do not use any seal tapes or liquid sealing paste.

Filter:

Hydraulic oil must be filtered with nominal mesh size of 10 micrometers. We recommend filter unit No. 6981-10-G 1/4. Order No. 63966.