

WHEN ADJUSTING FLOW RATE- DO NOT OVER TIGHTEN THE ADJUSTMENT STEM. OVER TIGHTENING MAY CAUSE INTERNAL DAMAGE TO THE FLOW CONTROL VALVE.

DOME CAP
INSTALL AFTER FINAL FLOW RATE ADJUSTMENT

TO INSTALL THE FLOW CONTROL VALVE INTO A PORT:

1. INSERT THE SPACER WITH THE COUNTERSUNK SIDE FACING THE BOTTOM OF THE PORT.
2. INSTALL THE O-RING ON TOP OF THE SPACER.
3. INSTALL BONDED SEAL ON VALVE BODY.
4. SCREW IN VALVE BODY AND TIGHTEN PER CHART.

TO ADJUST THE FLOW CONTROL VALVE:

REMOVE DOME CAP FROM LOCK NUT.
 LOOSEN LOCK NUT.
 ROTATE ADJUSTMENT STEM CLOCKWISE TO DECREASE FLOW RATE.
 ROTATE ADJUSTMENT STEM COUNTER CLOCKWISE TO INCREASE FLOW RATE.
 INTERNAL RETAINING RING WILL PREVENT EXCESSIVE TRAVEL COUNTER CLOCKWISE.
 TIGHTEN LOCK NUT 1 HEX FLAT PAST FINGER TIGHT.
 INSTALL DOME CAP OVER LOCK NUT.

NOTE:
THIS FLOW CONTROL VALVE CAN
BE USED ONLY ON CLAMPS
THAT ARE MANIFOLD MOUNTED.

PORT SIZE	INSTALLATION TORQUE
G 1/8	27 Nm
G 1/4	47 Nm

INSTALLATION INSTRUCTIONS



VEKTEK, INC.
 1334 E. SIXTH AVE. P.O. BOX 625
 EMPORIA, KS. 66801 U.S.A.

C	2312	RELEASE	K. ROEMER	07/28/11
REV	IN ACCORDANCE WITH ECN	EFFECTIVE DATE	REVISED BY	DATE
DRW BY:	K. ROEMER	DRAWING STATUS: ECN		
DATE:	06/29/10	PRODUCTION APPROVED FOR RELEASED STATUS ONLY		

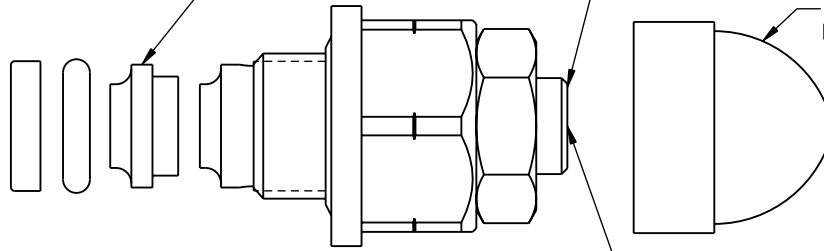
ASSEMBLIES AFFECTED
 6916-12-01
 6916-12-04

INSTALLATION, IN-PORT FLOW CONTROL VALVE		
SIZE	ISM6904	REV
A		C

SECOND SPACER- USED ON ASSEMBLIES LISTED BELOW THAT ARE MARKED WITH *

ADJUSTMENT STEM
CW TO DECREASE FLOW
CCW TO INCREASE FLOW

INSTALL CAP AFTER FINAL FLOW RATE ADJUSTMENT



WHEN ADJUSTING FLOW RATE- DO NOT OVER TIGHTEN THE ADJUSTMENT STEM. OVER TIGHTENING MAY CAUSE INTERNAL DAMAGE TO THE FLOW CONTROL VALVE.

TO INSTALL THE FLOW CONTROL VALVE INTO A PORT:

1. INSERT THE COUNTERSUNK SPACER WITH THE COUNTERSUNK SIDE FACING THE BOTTOM OF THE PORT.
2. INSTALL THE O-RING ON TOP OF THE SPACER.
3. INSTALL SECOND SPACER (IF PROVIDED) ON TOP OF ORING.
4. SCREW IN FLOW CONTROL VALVE AND TIGHTEN PER CHART

TO ADJUST THE FLOW CONTROL VALVE:

ROTATE ADJUSTMENT STEM CLOCKWISE TO DECREASE FLOW RATE
ROTATE ADJUSTMENT STEM COUNTER CLOCKWISE TO INCREASE FLOW RATE

WARNING: ROTATING THE ADJUSTMENT STEM MORE THAN THREE REVOLUTIONS COUNTERCLOCKWISE FROM IT'S FULLY CLOSED POSITION MAY RESULT IN PERSONAL INJURY.

NOTE:
THIS FLOW CONTROL VALVE CAN BE USED ONLY ON SWING CLAMPS THAT ARE MANIFOLD MOUNTED.

PORT SIZE	INSTALLATION TORQUE
G 1/8	27 Nm
G 1/4	47 Nm

INSTALLATION INSTRUCTIONS



VEKTEK, INC.
1334 E. SIXTH AVE. P.O. BOX 625
EMPORIA, KS. 66801 U.S.A.

A	2200	RELEASE	K. ROEMER	06/29/10
REV	IN ACCORDANCE WITH ECN	EFFECTIVE DATE	REVISED BY	DATE
DRW BY:	K. ROEMER	DRAWING STATUS: ECN		
DATE:	06/29/10	PRODUCTION APPROVED FOR RELEASED STATUS ONLY		

ASSEMBLIES AFFECTED
#6916-12-01
#6916-12-04

INSTALLATION, IN-PORT FLOW CONTROL VALVE		
SIZE	ISM6904	REV
A		A