

1

2

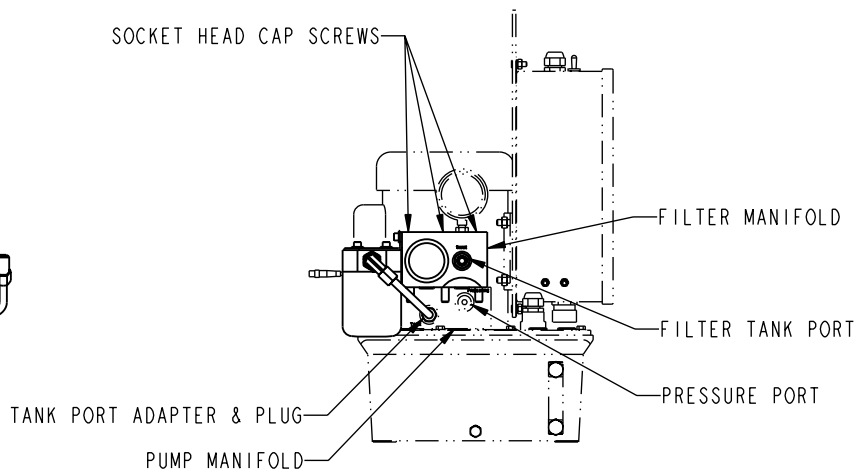
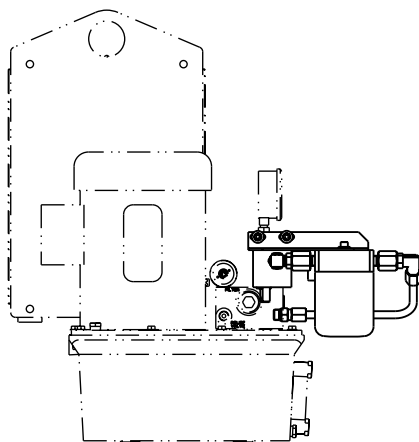
1. READ AND UNDERSTAND THIS DOCUMENT IN IT'S ENTIRETY.
2. DISCONNECT POWER TO PUMP.
3. REMOVE PLUG OR FITTING FROM FRONT TANK PORT ON PUMP MANIFOLD.
4. REMOVE ADAPTER & PLUG OR TANK RETURN LINE FROM TOP TANK PORT ON PUMP MANIFOLD.
5. REMOVE PLUG OR GAUGE FROM TOP PRESSURE PORT ON PUMP MANIFOLD.
6. INSTALL NEW O-RINGS (2) PROVIDED IN THE KIT TO TOP PORTS OF PUMP MANIFOLD.
7. INSTALL FILTER KIT ASSEMBLY ON TOP OF PUMP MANIFOLD, ALIGNING THEM PROPERLY.
8. INSTALL SOCKET HEAD CAP SCREWS PROVIDED IN KIT TO MOUNT FILTER MANIFOLD TO PUMP MANIFOLD.
9. INSTALL PLUG OR GAUGE TO TOP PRESSURE PORT ON FILTER MANIFOLD.
10. INSTALL STRAIGHT TUBING CONNECTOR INTO TANK PORT ON PUMP MANIFOLD AND TIGHTEN TUBING NUT.
11. INSTALL TANK RETURN LINE TO FRONT TANK PORT ON FILTER MANIFOLD.
12. CHECK OIL LEVEL IN PUMP AND FILL IF REQUIRED.
13. RE-CONNECT POWER TO PUMP.
14. CYCLE VALVES TO INSURE PROPER FUNCTION. BLEED AIR FROM PRESSURE LINE(S) IF NECESSARY.
15. CHECK FILTER PRESSURE INDICATOR GAUGE FOR PROPER FUNCTION.
 FILTER LINE PRESSURE SHOULD RISE DURING VALVE "RETURN TO TANK". ACTUATION.
 FILTER LINE PRESSURE SHOULD RETURN TO ZERO DURING VALVE "PRESSURE LINE" ACTUATION.
16. IF NORMAL FUNCTION DOES NOT OCCUR, CONTACT FACTORY SERVICE AT +1-913-365-1045.

B

B

A

A



INSTALLATION INSTRUCTIONS



VEKTEK, INC.
 1334 E. SIXTH AVE. P.O. BOX 625
 EMPORIA, KS. 66801 U.S.A.

A	1999	RELEASE	K. ROEMER	03/11/09
REV	IN ACCORDANCE WITH ECN	EFFECTIVE DATE	REVISED BY	DATE
DRW BY:	DRAWING STATUS: Released			
DATE: 12/08/08	PRODUCTION APPROVED FOR RELEASED STATUS ONLY			

ASSEMBLIES AFFECTED
 46255900

INSTRUCTIONS, FILTER, PUMP, .75, 0 VALVE

SIZE A 1SMV5500 REV A

1

2

SHEET 1 OF 1