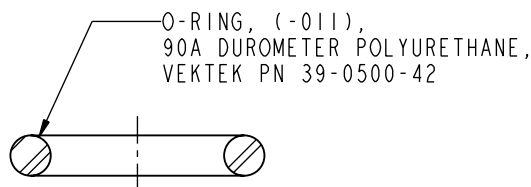


1

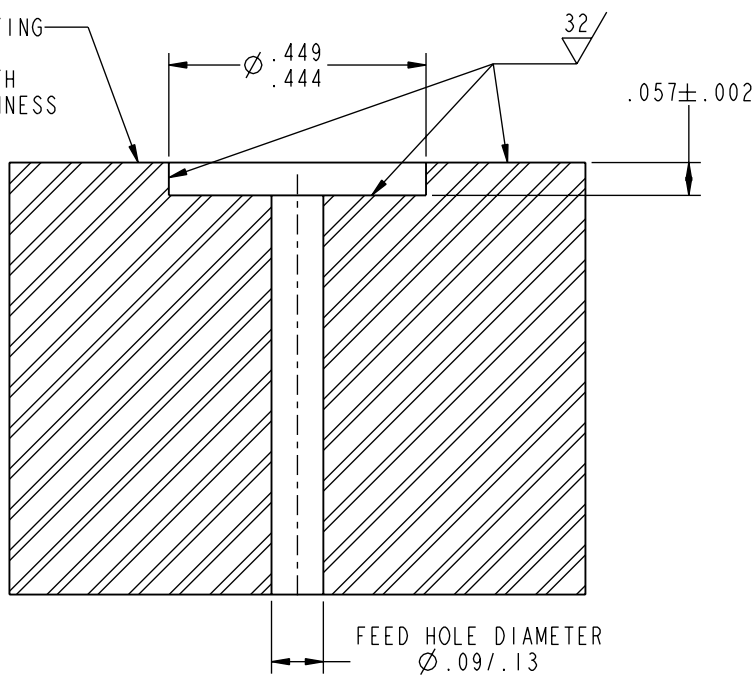
2

B

B



FOR PROPER SEALING, MATING SURFACE SHOULD BE FLAT WITHIN .003 (.08mm) WITH A MAXIMUM SURFACE ROUGHNESS OF 32 Ra (1,6µ Ra).



A

A

INSTALLATION INSTRUCTIONS



VEKTEK, INC.
1334 E. SIXTH AVE. P.O. BOX 625
EMPORIA, KS. 66801 U.S.A.

B	2245	RELEASE	MES	11-08-10
REV	IN ACCORDANCE WITH ECN	EFFECTIVE DATE	REVISED BY	DATE
DRW BY:	DRAWING STATUS: Released			
DATE: 3-23-06	PRODUCTION APPROVED FOR RELEASED STATUS ONLY			

ASSEMBLIES AFFECTED

INSTRUCTION SHEET
MANIFOLD MOUNT PORT INSTALLATION

SIZE A	1S1512	REV B
-----------	--------	----------

1

2

FORM FEG041-1S-ASIZE, REV. A

SHEET 1 OF 1