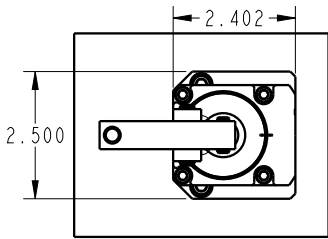
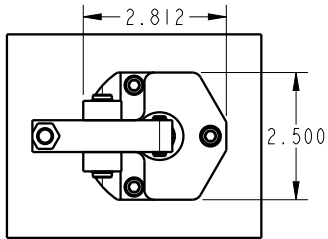
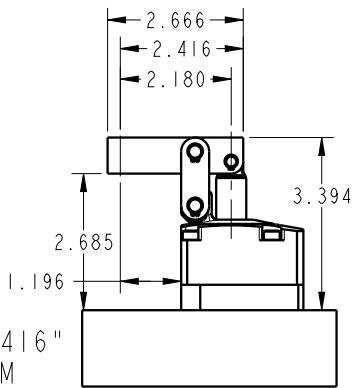
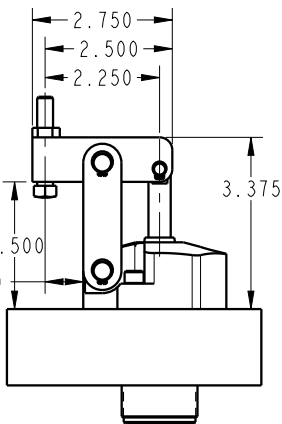


EXISTING VEKTEK 16-6106-00 LINK CLAMP
700 LB @ 5,000 PSI W/ STANDARD LEVER

NEW TUFLINK360 16-3115-00 LINK CLAMP
1,000 LB @ 5,000 PSI W/ STANDARD LEVER



DO YOU HAVE A 16-6106-00 LINK CLAMP?
IF SO, YOU CAN REPLACE WITH THE NEW
TUFLINK 360 16-3115-00 FOR FASTER
RETURN SPEED.

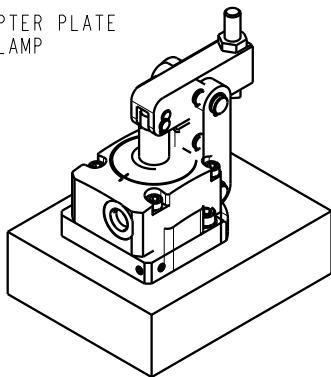
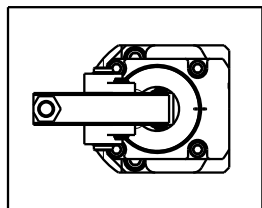


16-6106-00
STANDARD LEVER: 2.25"
CLAMPING FORCE: 700 LBS @ 5,000 PSI

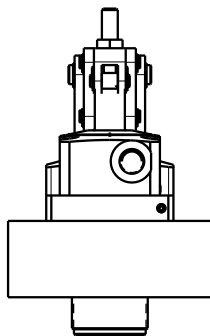
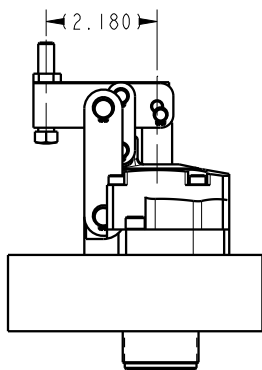
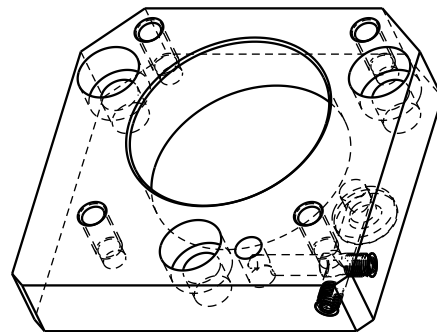
USE ADAPTER PLATE P/N: EN1600
INSTALL 16-3115-00 CLAMP
WITH EXTENDED LEVER 91-6115-02
CUT TO 2.666" O.A. LENGTH
DRILL AND TAP FOR CONTACT BOLT AT 2.416"
MOVE AND INSTALL CONTACT BOLT AND JAM
NUT FROM OLD LEVER

RESULTING CLAMPING FORCE: 616 LBS @
5,000 PSI

VIEWS DEPICTING TL360 & ADAPTER PLATE
OVERLAID ON EXISTING LINK CLAMP



DIMENSIONS FOR FABRICATING
ADAPTER PLATE ASK FOR P/N: EN1600
- UTILIZE EXISTING LINK CLAMP
1) MOUNTING HOLES
2) MANIFOLD MOUNTING



**INSTALLATION
INSTRUCTIONS**



VEKTEK, INC.
1334 E. SIXTH AVE. P.O. BOX 625
EMPORIA, KS. 66801 U.S.A.

ASSEMBLIES AFFECTED
16-6106-00
16-3115-00

EXISTING 700LB TO TL360 600LB
16-6106-00 TO 16-3115-00

SIZE
A IS1600

REV
A

A	3163	RELEASE	BCD	01/09/17
REV	IN ACCORDANCE WITH ECN	EFFECTIVE DATE	REVISED BY	DATE
DRW BY:	ALUTHI	DRAWING STATUS: Released		
DATE:	9-9-16	PRODUCTION APPROVED FOR RELEASED STATUS ONLY		