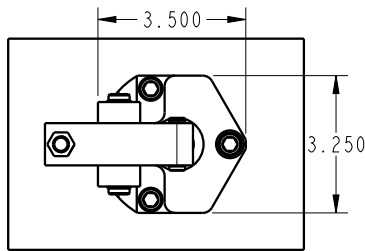
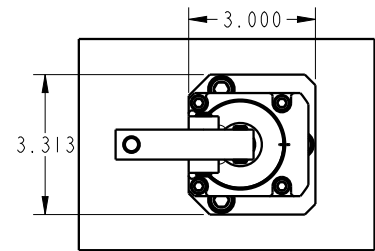


1
EXISTING VEKTEK 16-6109-00 LINK CLAMP
1,300 LB @ 5,000 PSI W/ STANDARD LEVER

2
NEW TUFLINK360 16-3118-00 LINK CLAMP
1,400 LB @ 5,000 PSI W/ STANDARD LEVER



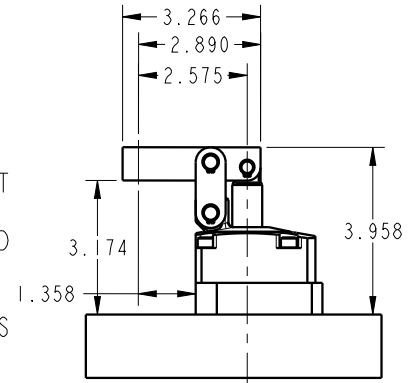
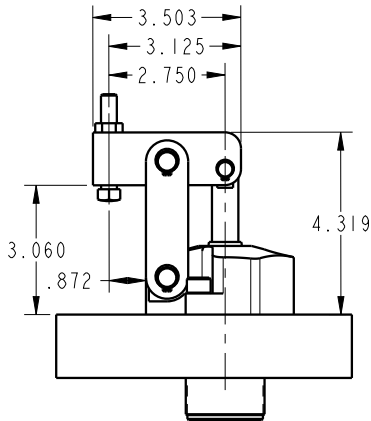
DO YOU HAVE A 16-6109-00 LINK CLAMP?
IF SO, YOU CAN REPLACE WITH THE NEW TUFLINK 360 16-3118-00 FOR FASTER RETURN SPEED.



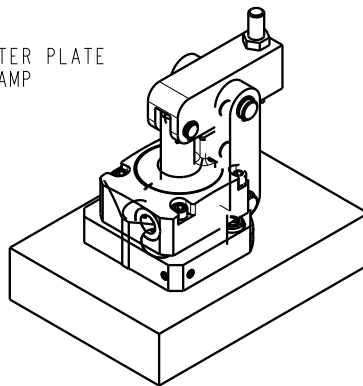
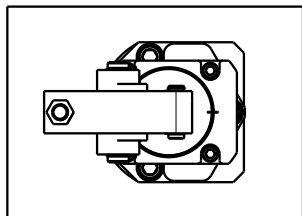
16-6109-00
STANDARD LEVER: 2.75"
CLAMPING FORCE: 1300 LBS @ 5,000 PSI

USE ADAPTER PLATE P/N: EN1601
INSTALL 16-3118-00 CLAMP WITH EXTENDED LEVER 91-6118-02 CUT TO 3.266" O.A. LENGTH
DRILL AND TAP FOR CONTACT BOLT AT 2.890"
MOVE AND INSTALL CONTACT BOLT AND JAM NUT FROM OLD LEVER

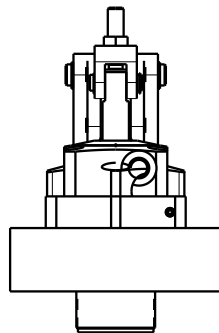
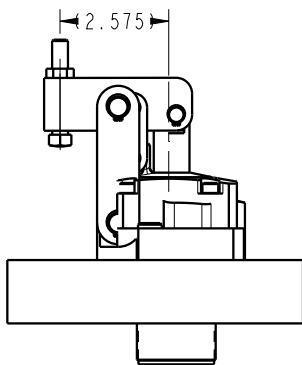
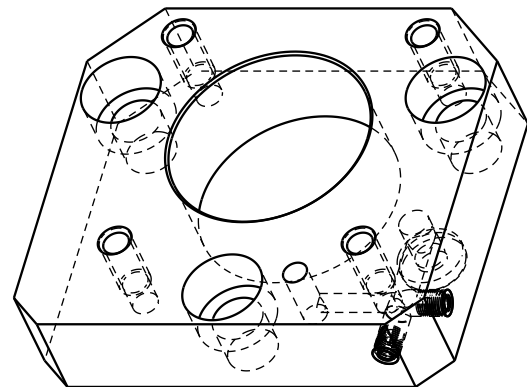
RESULTING CLAMPING FORCE: 928 LBS @ 5,000 PSI



VIEWS DEPICTING TL360 & ADAPTER PLATE OVERLAID ON EXISTING LINK CLAMP



DIMENSIONS FOR FABRICATING ADAPTER PLACE ASK FOR P/N: EN1601
- UTILIZE EXISTING LINK CLAMP
1) MOUNTING HOLES
2) MANIFOLD MOUNTING



INSTALLATION INSTRUCTIONS



VEKTEK, INC.
1334 E. SIXTH AVE. P.O. BOX 625
EMPORIA, KS. 66801 U.S.A.

A	3163	RELEASE	BCD	01/09/17
REV	IN ACCORDANCE WITH ECN	EFFECTIVE DATE	REVISED BY	DATE
DRW BY:	ALUTHI	DRAWING STATUS: Released		
DATE:	9-9-16	PRODUCTION APPROVED FOR RELEASED STATUS ONLY		

ASSEMBLIES AFFECTED
16-6109-00
16-3118-00

EXISTING 1300LB TO TL360 1400LB	
16-6109-00 TO 16-3118-00	
SIZE A	IS1601
REV A	