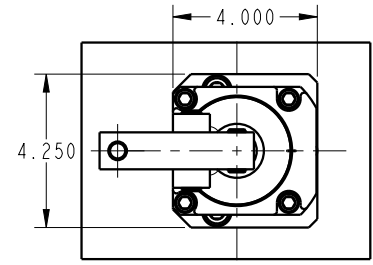
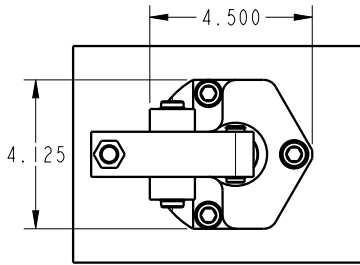


EXISTING VEKTEK 16-6114-00 LINK CLAMP
3,000 LB @ 5,000 PSI W/ STANDARD LEVER

NEW TUFFLINK360 16-3128-00 LINK CLAMP
3,600 LB @ 5,000 PSI W/ STANDARD LEVER

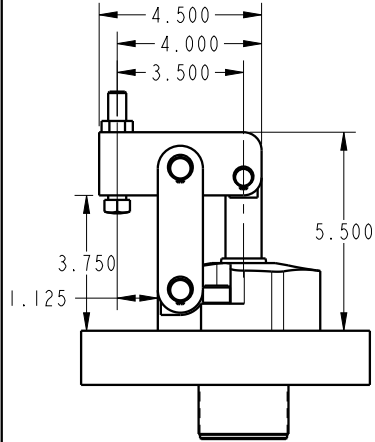
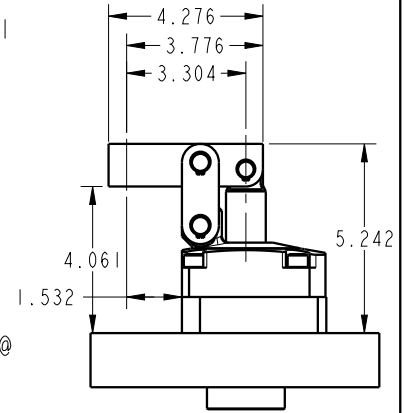


DO YOU HAVE A 16-6114-00 LINK CLAMP?
IF SO, YOU CAN REPLACE WITH THE NEW
TUFFLINK 360 16-3128-00 FOR FASTER
RETURN SPEED.

16-6114-00
STANDARD LEVER: 3.5"
CLAMPING FORCE: 3000 LBS @ 5,000 PSI

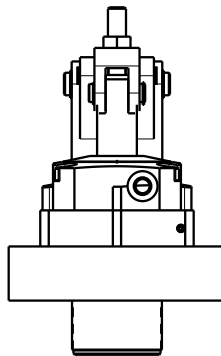
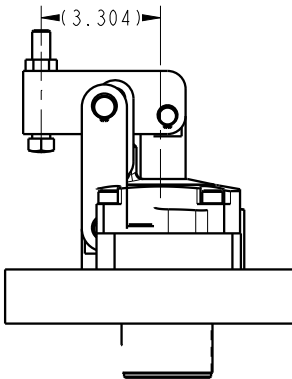
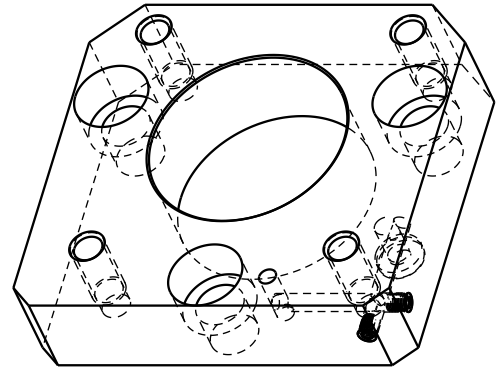
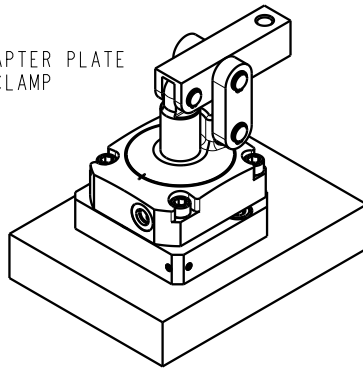
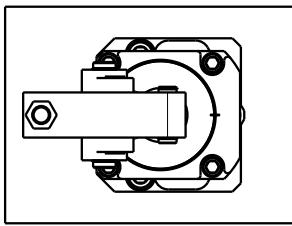
USE ADAPTER PLATE P/N: ENI602
INSTALL 16-3128-00 CLAMP
WITH EXTENDED LEVER 91-6128-02
CUT TO 4.276" O.A. LENGTH
DRILL AND TAP FOR CONTACT BOLT AT
3.776"
MOVE AND INSTALL CONTACT BOLT AND
JAM NUT FROM OLD LEVER

RESULTING CLAMPING FORCE: 2750 LBS @
5,000 PSI



VIEWS DEPICTING TL360 & ADAPTER PLATE
OVERLAID ON EXISTING LINK CLAMP

DIMENSIONS FOR FABRICATING
ADAPTER PLATE ASK FOR P/N:ENI602
- UTILIZE EXISTING LINK CLAMP
1) MOUNTING HOLES
2) MANIFOLD MOUNTING



**INSTALLATION
INSTRUCTIONS**



VEKTEK, INC.
1334 E. SIXTH AVE. P.O. BOX 625
EMPORIA, KS. 66801 U.S.A.

ASSEMBLIES AFFECTED

16-6114-00
16-3128-00

EXISTING 3000LB TO TL360 3600LB

16-6114-00 TO 16-3128-00

SIZE
A

IS1602

REV
A

A	3163	RELEASE	BCD	01/09/17
REV	IN ACCORDANCE WITH ECN	EFFECTIVE DATE	REVISED BY	DATE
DRW BY:	ALUTHI	DRAWING STATUS: Released		
DATE:	9-9-16	PRODUCTION APPROVED FOR RELEASED STATUS ONLY		