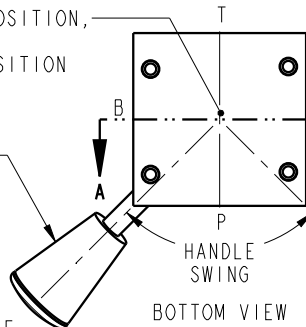


1
 ROTOR MUST BE IN THIS POSITION, RELATIVE TO THE PORTS, REGARDLESS OF HANDLE POSITION

HANDLE THIS POSITION "P" TO "A" "B" TO "T"

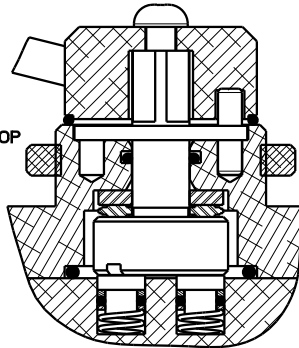
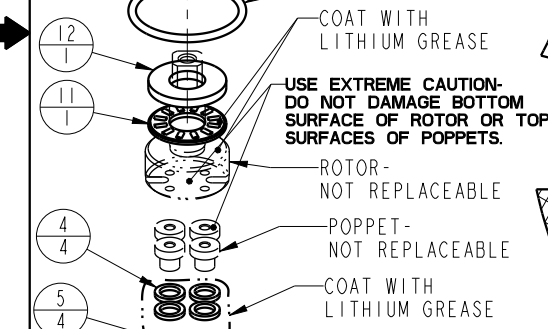
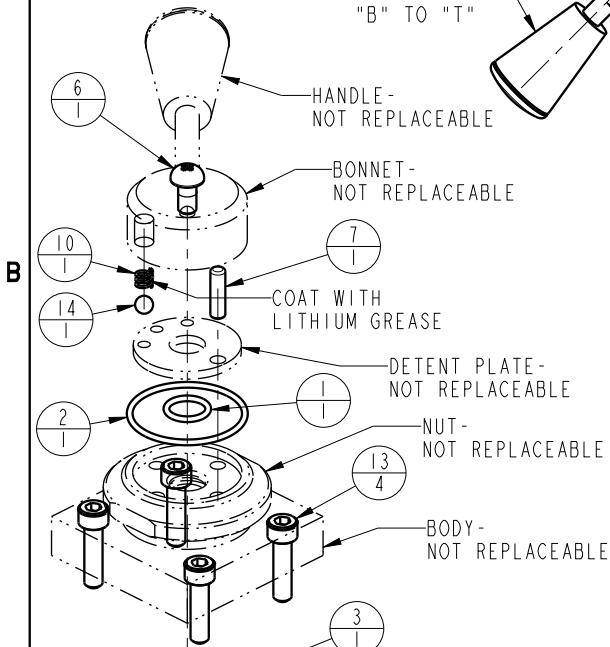


DO NOT MOVE! REPOSITIONING OF THE ROTOR WILL CAUSE THE ROTOR TO MALFUNCTION.

DOWEL PIN-FACTORY LOCATION

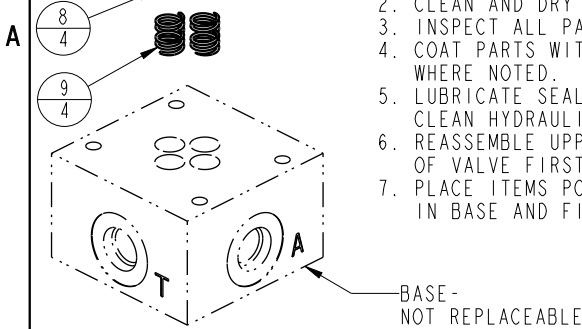
TO REPOSITION HANDLE:

1. ROTATE HANDLE TO THE CLOCKWISE DETENT POSITION.
2. REMOVE BONNET SCREW.
3. SLIDE BONNET/HANDLE ASSEMBLY OFF OF ROTOR SHAFT- RETRIEVE BALL AND SPRING FOR REASSEMBLY.
4. PULL DOWEL PIN FROM BODY.
5. ROTATE DETENT PLATE (90° INCREMENTS) TO NEW POSITION.
6. INSERT DOWEL PIN THROUGH HOLE IN DETENT PLATE, PUSH GREASED SPRING INTO HOLE IN BONNET AND PLACE BALL ON CORRECT DETENT PLATE HOLE.
7. ALIGN BONNET/HANDLE ASSEMBLY WITH THE NEW POSITION OF THE DOWEL PIN AND SLIDE ONTO ROTOR SHAFT (SPRING AND BALL MUST BE IN PLACE)
8. REPLACE SCREW VERIFY POSITION OF BONNET SEAL AND TIGHTEN BONNET SCREW.



GENERAL INSTRUCTIONS:

1. DISASSEMBLE VALVE AND DISCARD ITEMS THAT WILL NOT BE REUSED.
2. CLEAN AND DRY ALL PARTS.
3. INSPECT ALL PARTS FOR DAMAGE.
4. COAT PARTS WITH LITHIUM GREASE- WHERE NOTED.
5. LUBRICATE SEAL KIT PARTS WITH CLEAN HYDRAULIC OIL.
6. REASSEMBLE UPPER SECTION OF VALVE FIRST.
7. PLACE ITEMS POPPET, 4, 5, 8, & 9 IN BASE AND FINISH ASSEMBLY.



NO.	QTY	PART NO.	DESCRIPTION
14	1	23600011	BALL, STEEL, ALLOY, .187
13	4	21410100	SOCH, 10-24 X 1-1/4, ALY
12	1	87114008	WASHER, THRUST
11	1	87114009	BEARING, THRUST
10	1	23350139	SPRING, DETENT
9	4	23350138	SPRING, POPPET
8	4	21430049	WASHER, POPPET
7	1	90199984	PIN, DOWEL
6	1	21410047	SCREW, BONNET
5	4	39000038	O-RING, POPPET
4	4	39F54019	BACKUP RING, POPPET
3	1	39001024	O-RING, BODY
2	1	39001011	SEAL, BONNET
1	1	39002009	O-RING, SHAFT, ROTOR

INSTRUCTION SHEET-

SEAL KIT
 INSTALLATION &
 HANDLE POSITION



VEKTEK, INC.
 1334 E. SIXTH AVE. P.O. BOX 625
 EMPORIA, KS. 66801 U.S.A.

Model Number
 71-3474-00

INSTRUCTION SHEET, 71-3474-00

VALVE, 4/3, SAE 4, PBC, MANUAL

SIZE
 A

IS-7118

REV
 E

FORM FEG041-IS-ASIZE, REV. B

E	3788	RELEASE	MJUST	7/30/19
REV	IN ACCORDANCE WITH ECN	EFFECTIVE DATE	REVISED BY	DATE
DRW BY: MES	DRAWING STATUS: Released			
DATE: 07-26-10	PRODUCTION APPROVED FOR RELEASED STATUS ONLY			

SHEET 1 OF 1