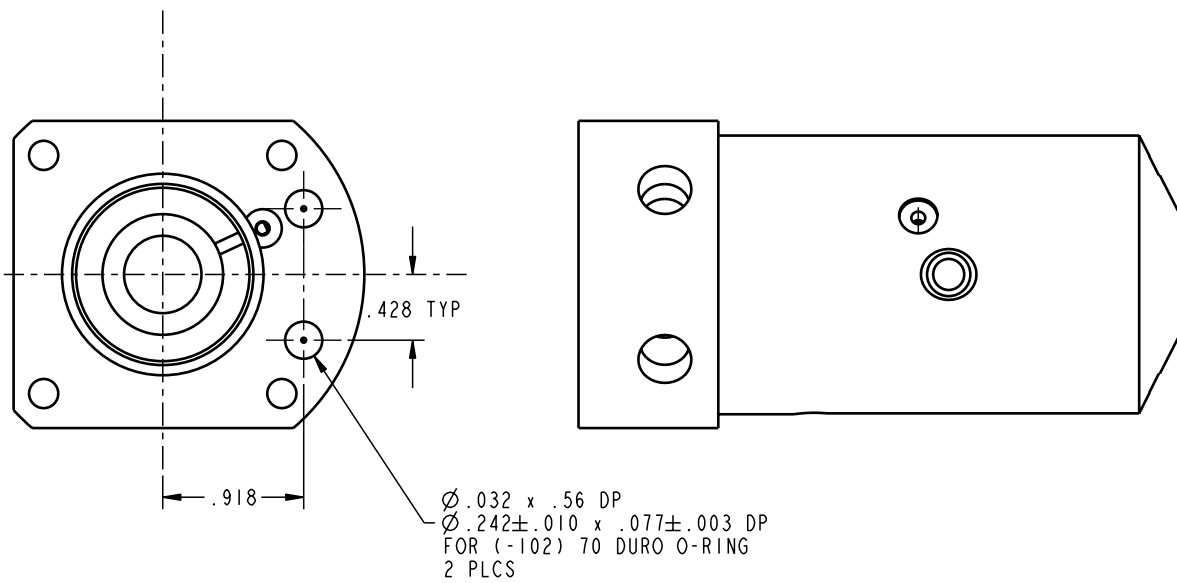


NOTE:
MOUNTING SURFACE AND BOTTOM OF $\varnothing .242$ C'BORE SHOULD BE
FLAT WITHIN $.003$ WITH A MAXIMUM SURFACE ROUGHNESS OF $16 Ra$.

VEKTEK HAS, AT THE REQUEST OF THE CUSTOMER, PROVIDED INFORMATION ON MODIFYING THE NOTED DEVICE.
THE MODIFICATION INFORMATION IS NOT A CERTIFICATION OF THE MODIFICATION, ITS OPERATION,
FUNCTIONALITY OR APPLICATION. VEKTEK DISCLAIMS ANY WARRANTY OF ANY KIND (WHETHER EXPRESSED,
IMPLIED, OR STATUTORY) AND VEKTEK SHALL HAVE NO FINANCIAL LIABILITY FOR APPLICATION OF CUSTOMER
MODIFIED PRODUCT.



PI-5111-00 ASSY, SC, BF, PNEU, 1 1/8, MM

**INSTALLATION
INSTRUCTIONS**



VEKTEK, INC.
1334 E. SIXTH AVE. P.O. BOX 625
EMPORIA, KS. 66801 U.S.A.

A	1454	RELEASE	JAM	3-23-06
REV	IN ACCORDANCE WITH ECN	EFFECTIVE DATE	REVISED BY	DATE
DRW BY:	RAH	DRAWING STATUS: Released		
DATE:	3/27/00	PRODUCTION APPROVED FOR RELEASED STATUS ONLY		

ASSEMBLIES AFFECTED

PI-5111-00

PI-5111-00 ASSY, SC, BF, PNEU, 1 1/8, MM

INSTALLATION INSTRUCTIONS

SIZE
A ISPI500

REV
A

SHEET 1 OF 1

FORM FEG041-1S.ASIZE, REV. A