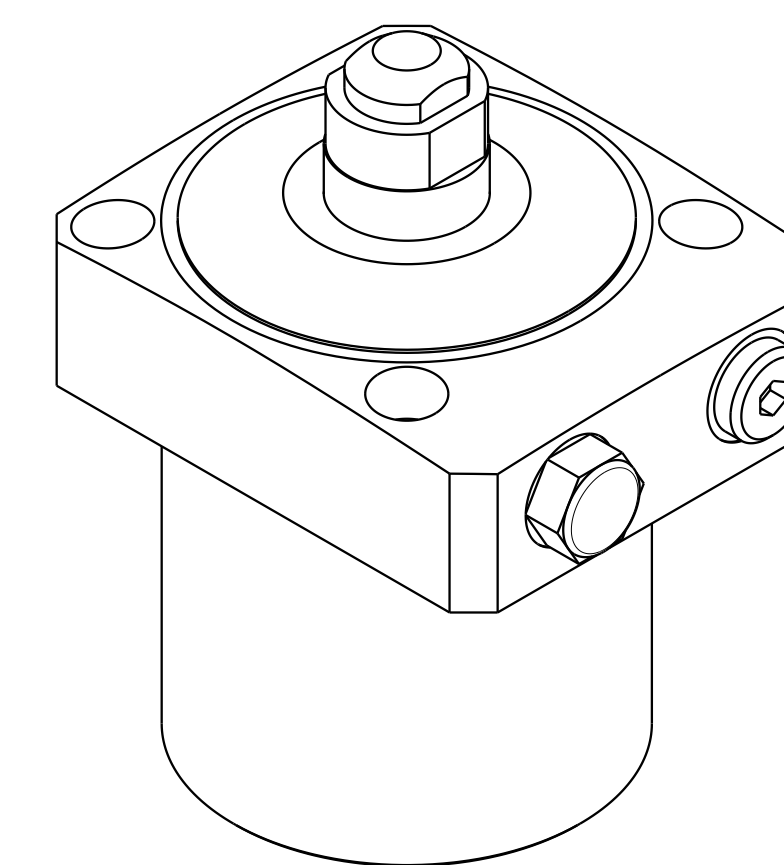
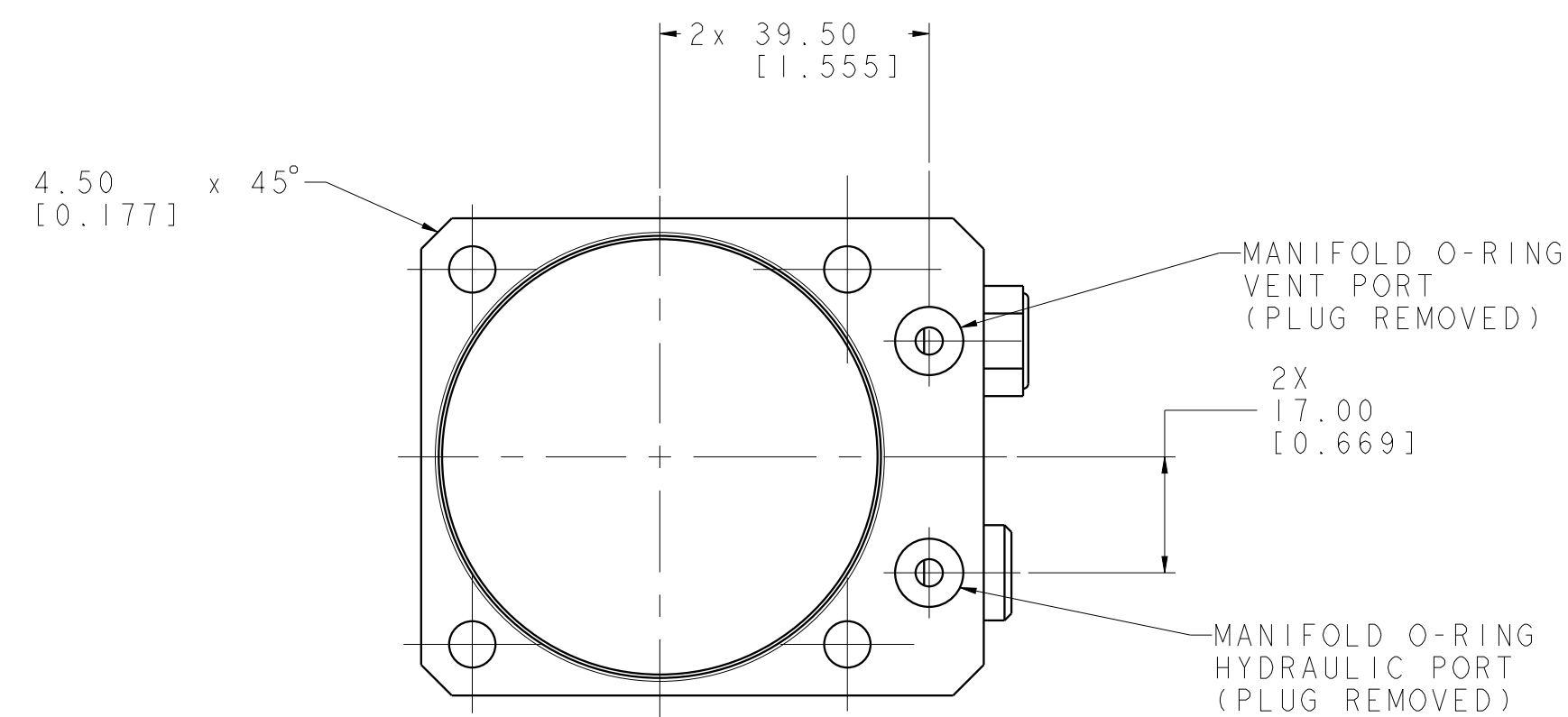


1

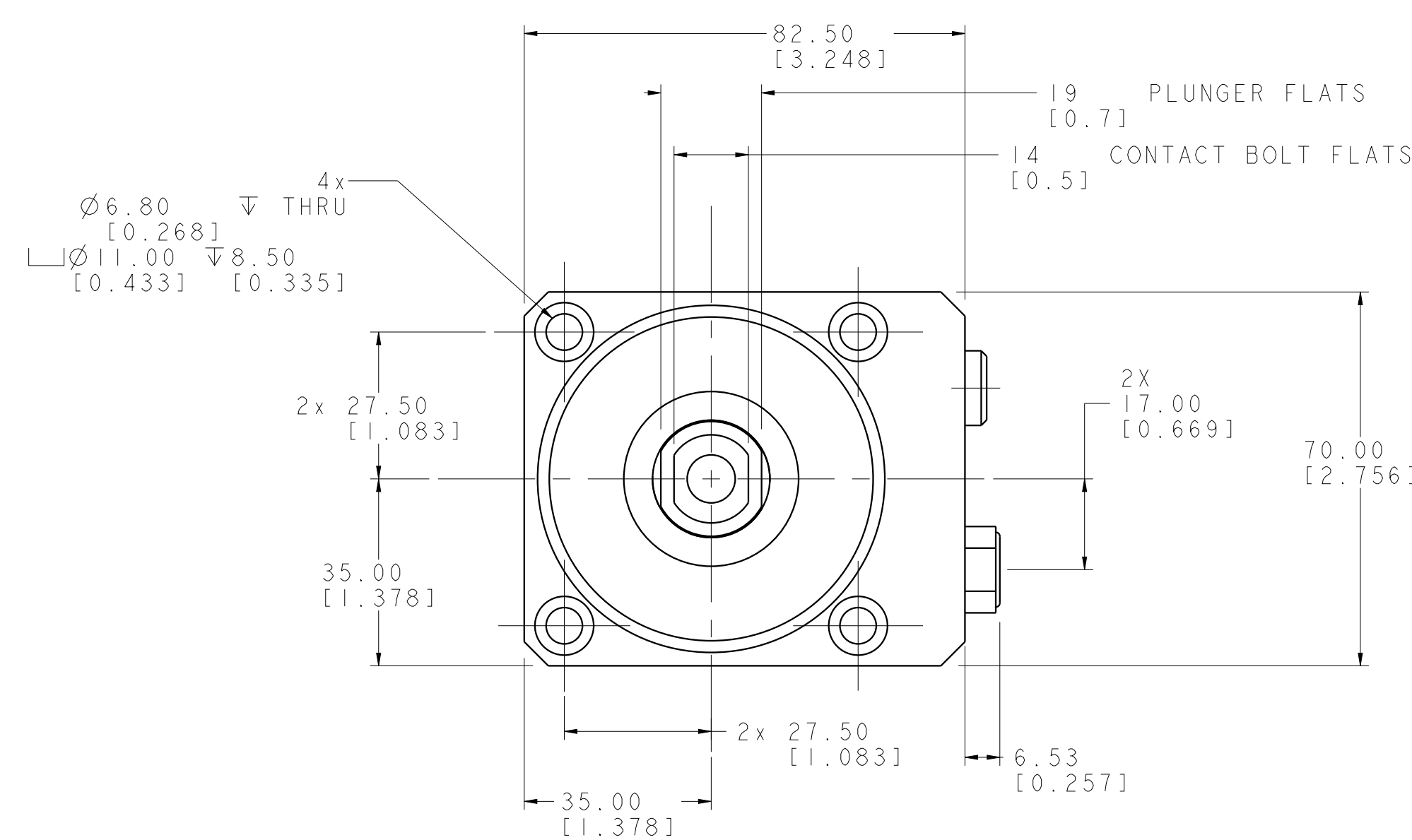
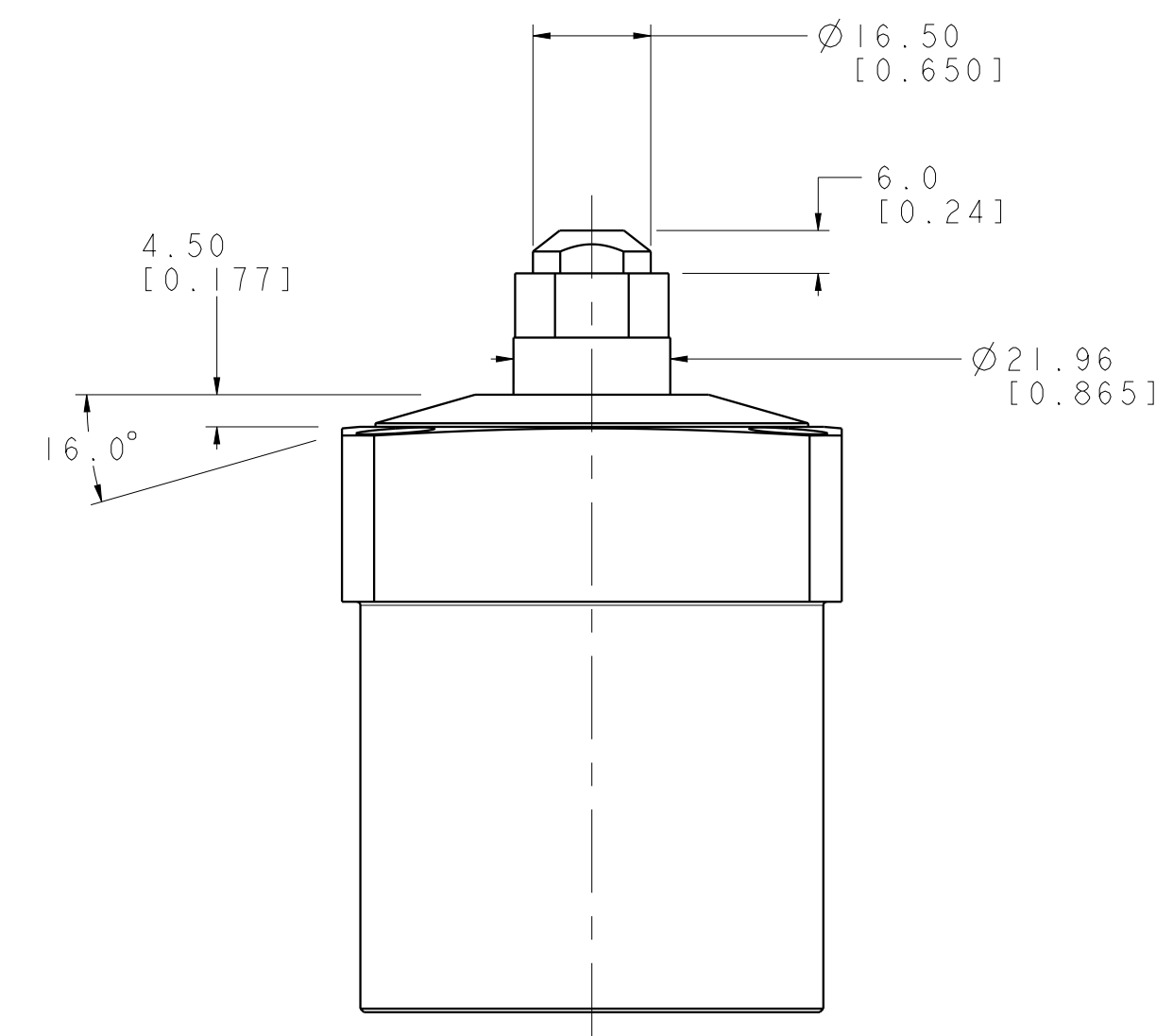
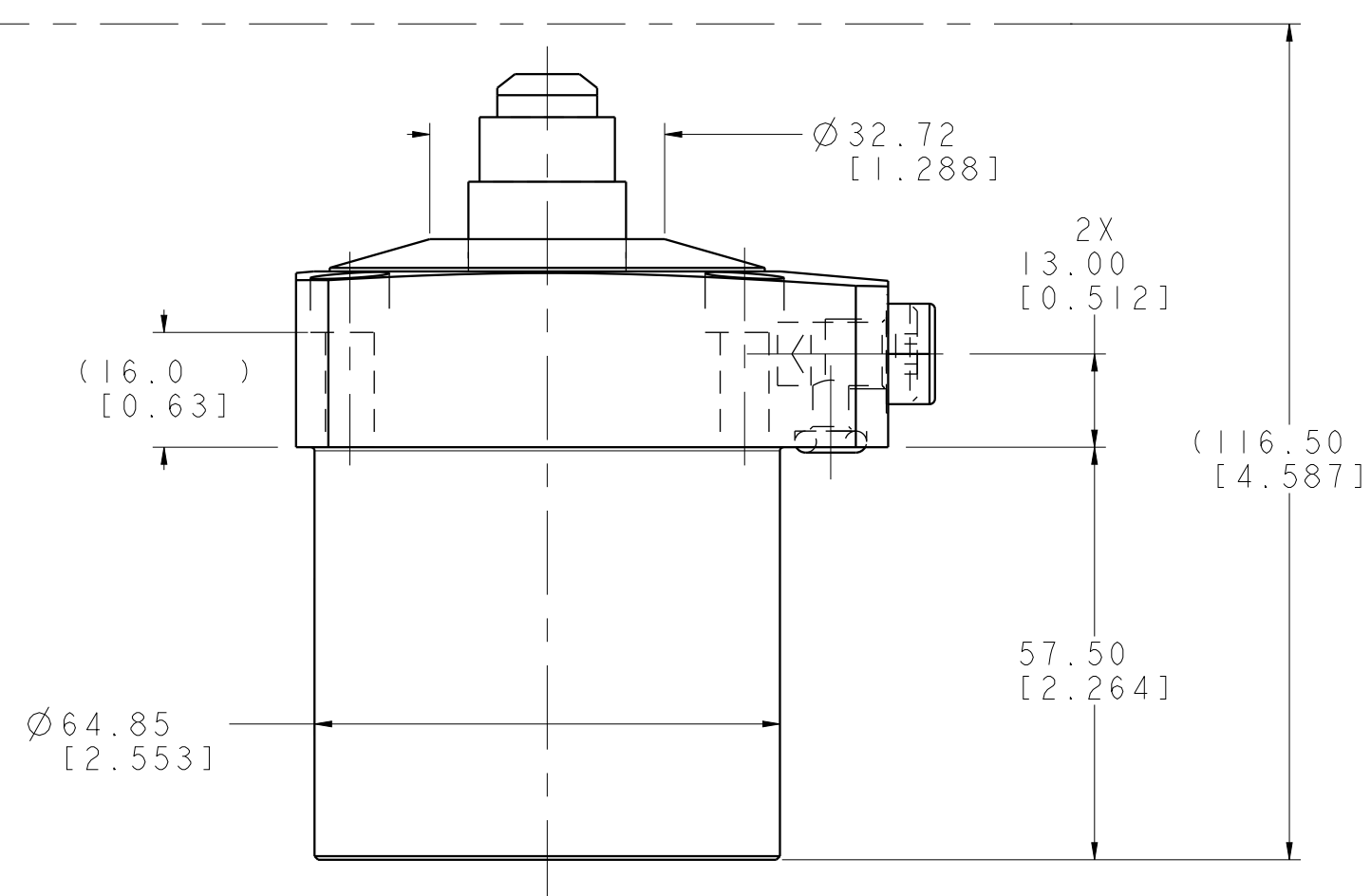
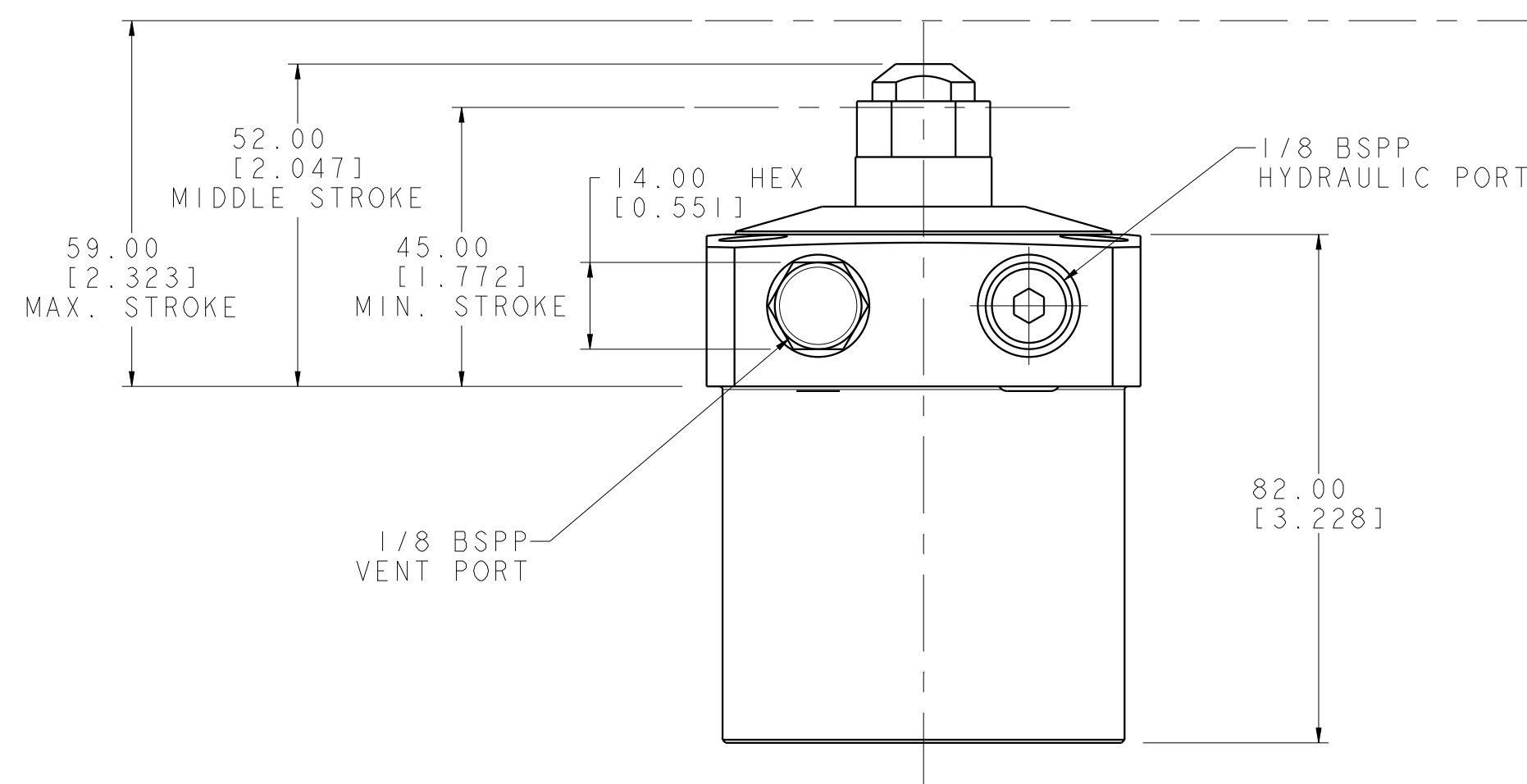
2

3

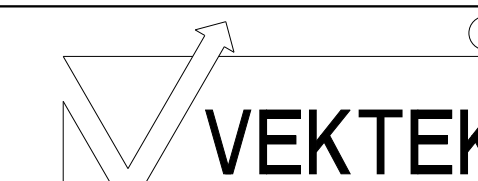
4



ILCML1022200H REV C ECN 3531



CAD CONTROL DRAWING



VEKTEK, INC.
1334 E. SIXTH AVE. P.O. BOX 625
EMPORIA, KS. 66801 U.S.A.

C	3531	RELEASE	NPETERS	07/18/18	L1022200H	A	ASSY, WS, 7MPa, TF, FA, 26kN
REV	IN ACCORDANCE WITH ECN	EFFECTIVE DATE	REVISED BY	DATE	REFERENCE MODEL	REF REV	*****
DRW BY:	MAJ	DRAWING STATUS: Released			TOLERANCES DO NOT APPLY	UNITS	SIZE
DATE:	10-26-16	PRODUCTION APPROVED FOR RELEASED STATUS ONLY			DIMENSIONS ARE NOMINAL	mm (inch)	D
					ILCML1022200H		REV C

2

3

4

SHEET 1 OF 1