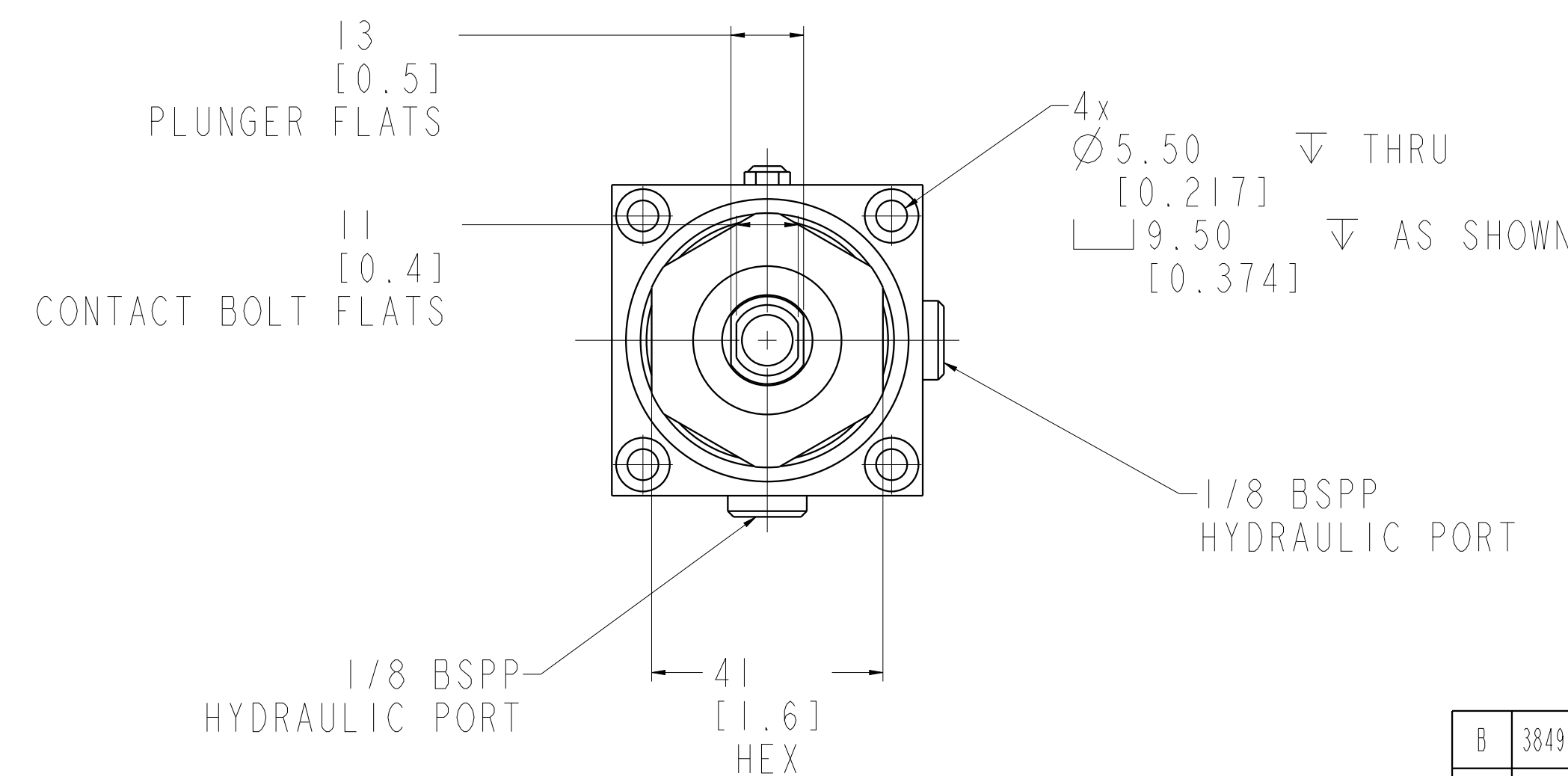
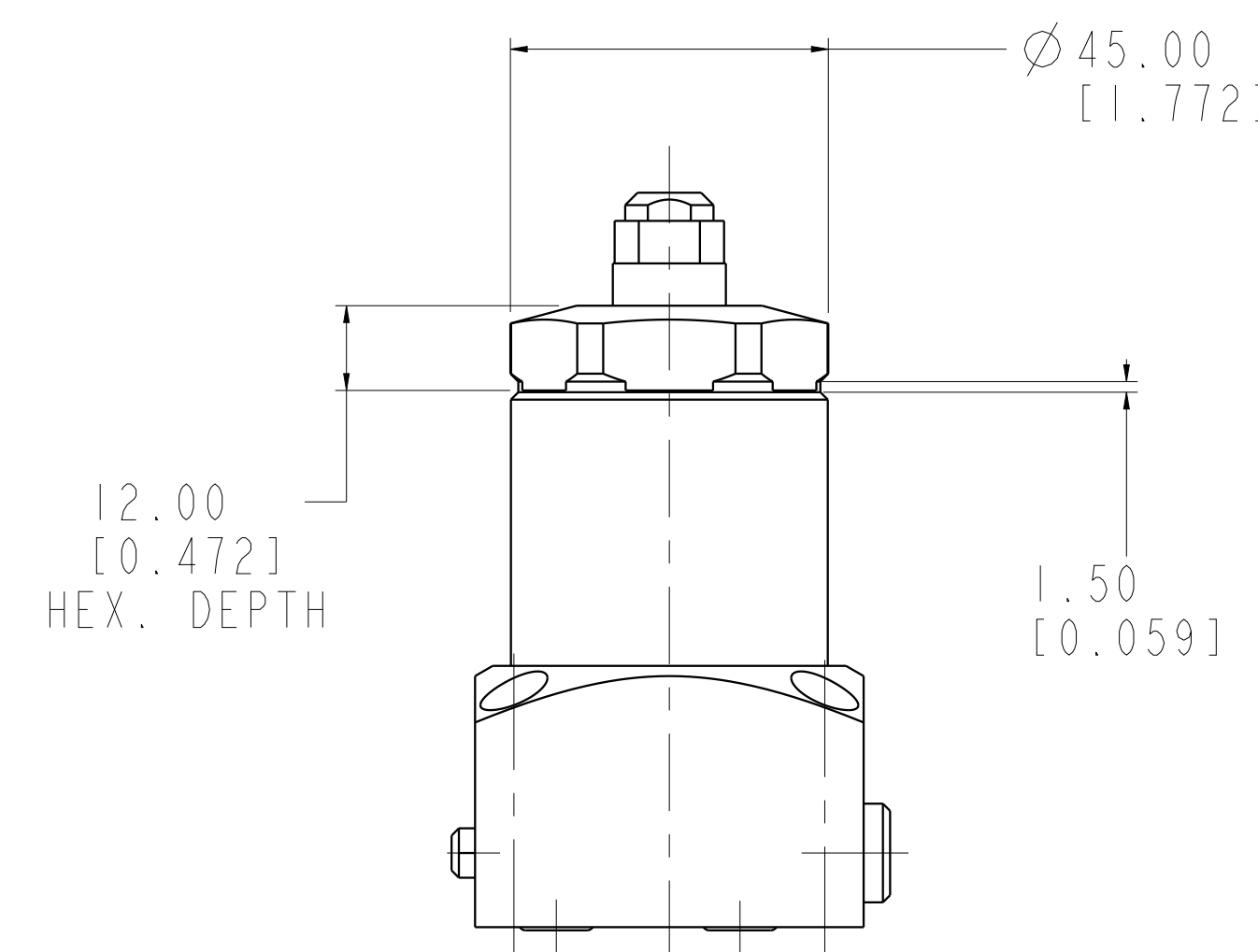
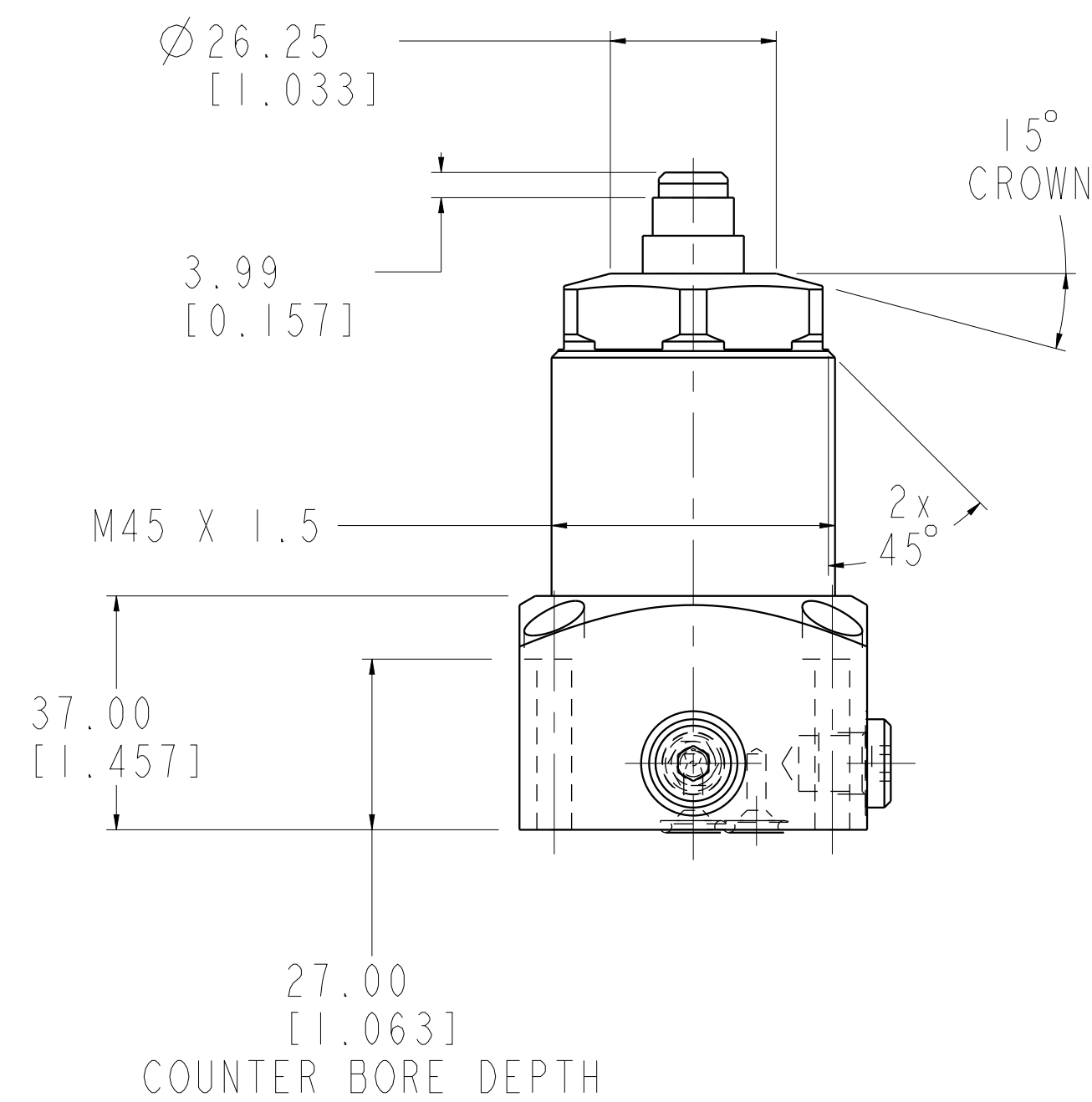
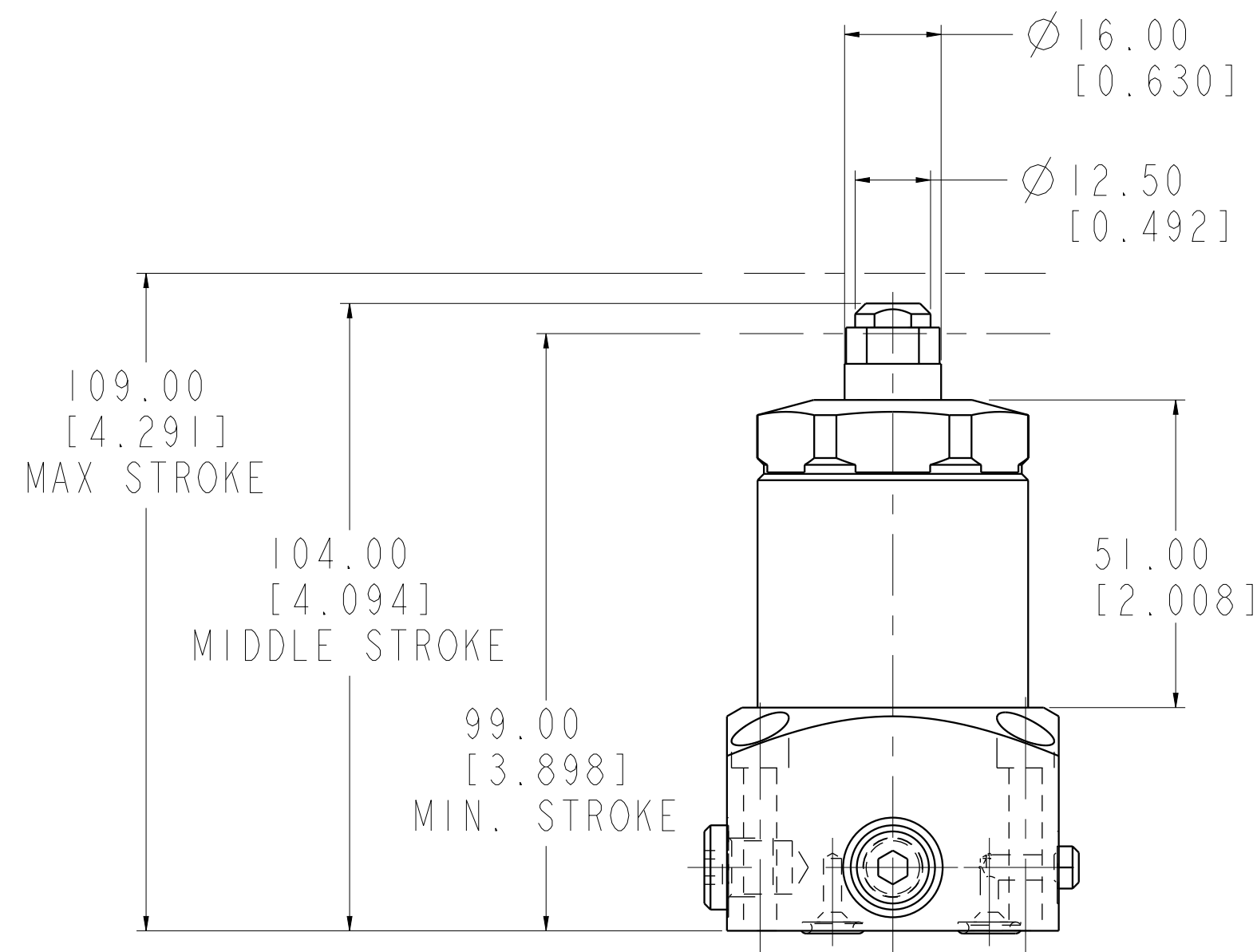
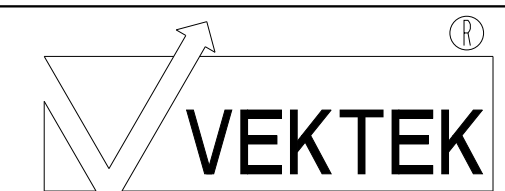


ILCML1051600L REV B ECN 3849



CAD CONTROL DRAWING



VEKTEK, INC.
1334 E. SIXTH AVE. P.O. BOX 625
EMPORIA, KS. 66801 U.S.A.

| | | | | | | | |
|---------|------------------------|--|------------|--------|---------------------------|-----------|-------------------------------|
| B | 3849 | RELEASE | MJUST | 7/9/19 | LI-0516-00L & LI-0516-00H | A | ASSY, WS, 7MPa, BM, SPR, 10kN |
| REV | IN ACCORDANCE WITH ECN | EFFECTIVE DATE | REVISED BY | DATE | REFERENCE MODEL | REF REV | ***** |
| DRW BY: | N. KARRAS | DRAWING STATUS: Released | | | TOLERANCES DO NOT APPLY | UNITS | SIZE |
| DATE: | 06/19/12 | PRODUCTION APPROVED FOR RELEASED STATUS ONLY | | | DIMENSIONS ARE NOMINAL | mm (inch) | D |
| | | | | | ILCML1051600L | REV | B |