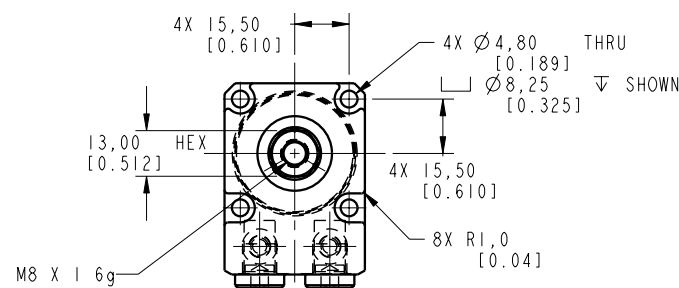
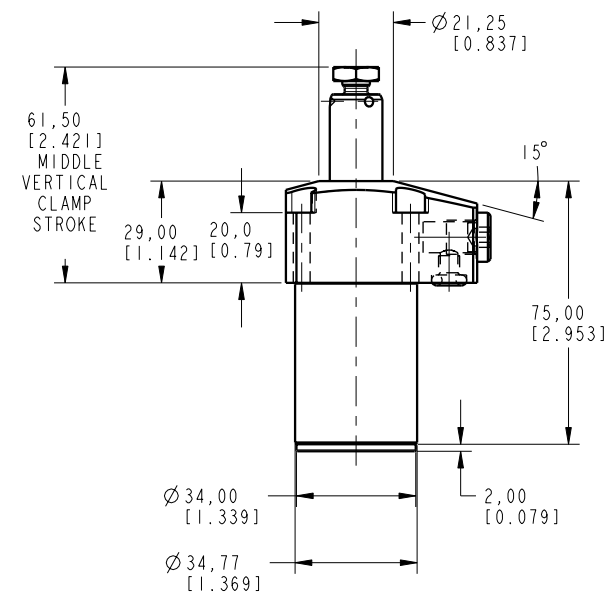
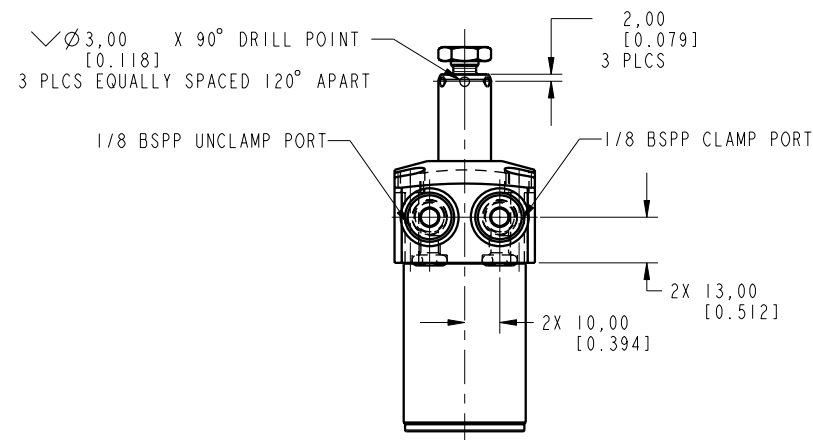
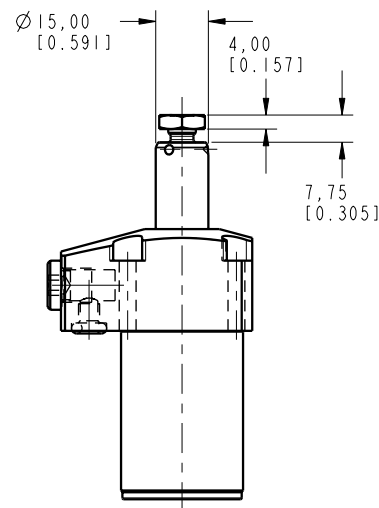


ILCML1402500L REV A ECN 2549



CAD CONTROL DRAWING



VEKTEK, INC.
 1334 E. SIXTH AVE. P.O. BOX 625
 EMPORIA, KS. 66801 U.S.A.

A	2549	RELEASE	OMITCHELL	6-12-13	LI402500L	A	SC, TF, 7MPa, 25B, LH
REV	IN ACCORDANCE WITH ECN	EFFECTIVE DATE	REVISED BY	DATE	REFERENCE MODEL	REF REV	*****
DRW BY:	ALUTHI	DRAWING STATUS: ECN			TOLERANCES DO NOT APPLY	UNITS	SIZE
DATE:	12-29-11	PRODUCTION APPROVED FOR RELEASED STATUS ONLY			DIMENSIONS ARE NOMINAL	mm [inch]	D ILCML1402500L REV A

FORM FE036, Rev. B

SHEET 1 OF 1