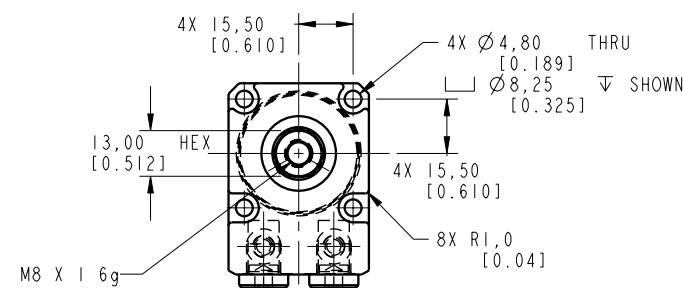
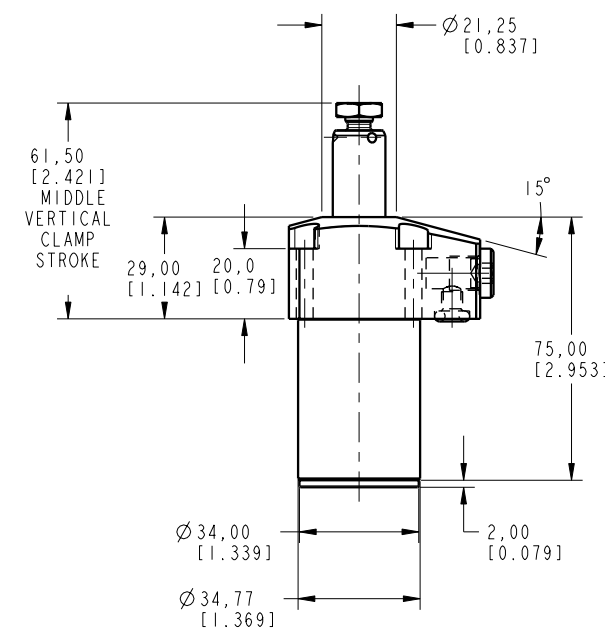
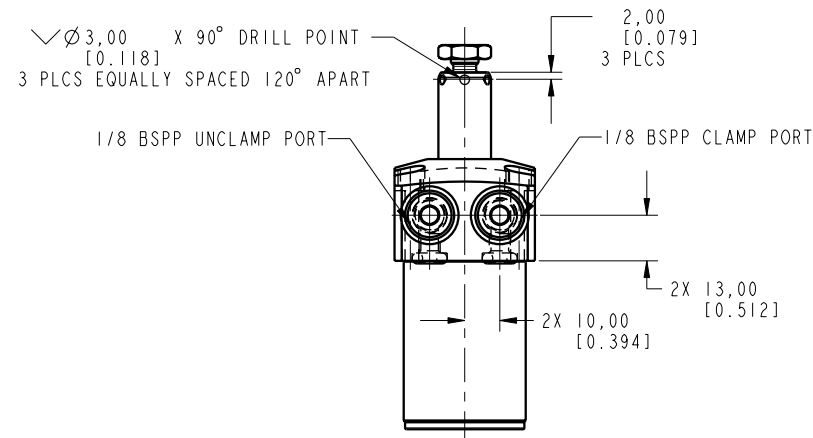
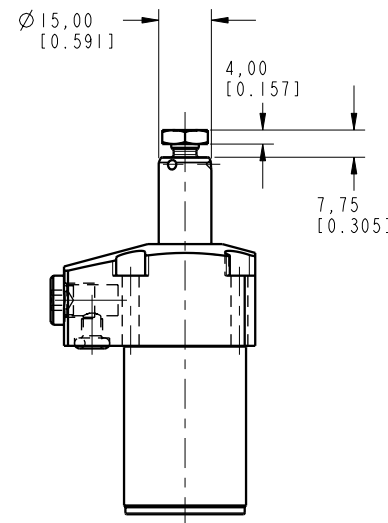


ILCML1402500R REV A ECN 2549



CAD CONTROL DRAWING



VEKTEK, INC.
 1334 E. SIXTH AVE. P.O. BOX 625
 EMPORIA, KS. 66801 U.S.A.

| | | | | | | | |
|---------|------------------------|--|------------|---------|-------------------------|-----------|-----------------------|
| A | 2549 | RELEASE | OMITCHELL | 6-12-13 | L1402500R | A | SC, TF, 7MPa, 25B, RH |
| REV | IN ACCORDANCE WITH ECN | EFFECTIVE DATE | REVISED BY | DATE | REFERENCE MODEL | REF REV | ***** |
| DRW BY: | ALUTHI | DRAWING STATUS: ECN | | | TOLERANCES DO NOT APPLY | UNITS | SIZE |
| DATE: | 12-29-11 | PRODUCTION APPROVED FOR RELEASED STATUS ONLY | | | DIMENSIONS ARE NOMINAL | mm [inch] | D ILCML1402500R REV A |

FORM FE036, Rev. B

SHEET 1 OF 1