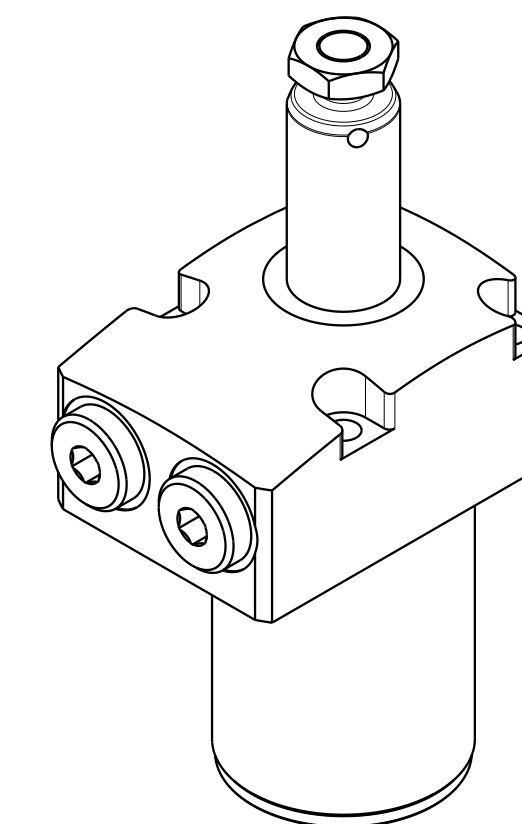
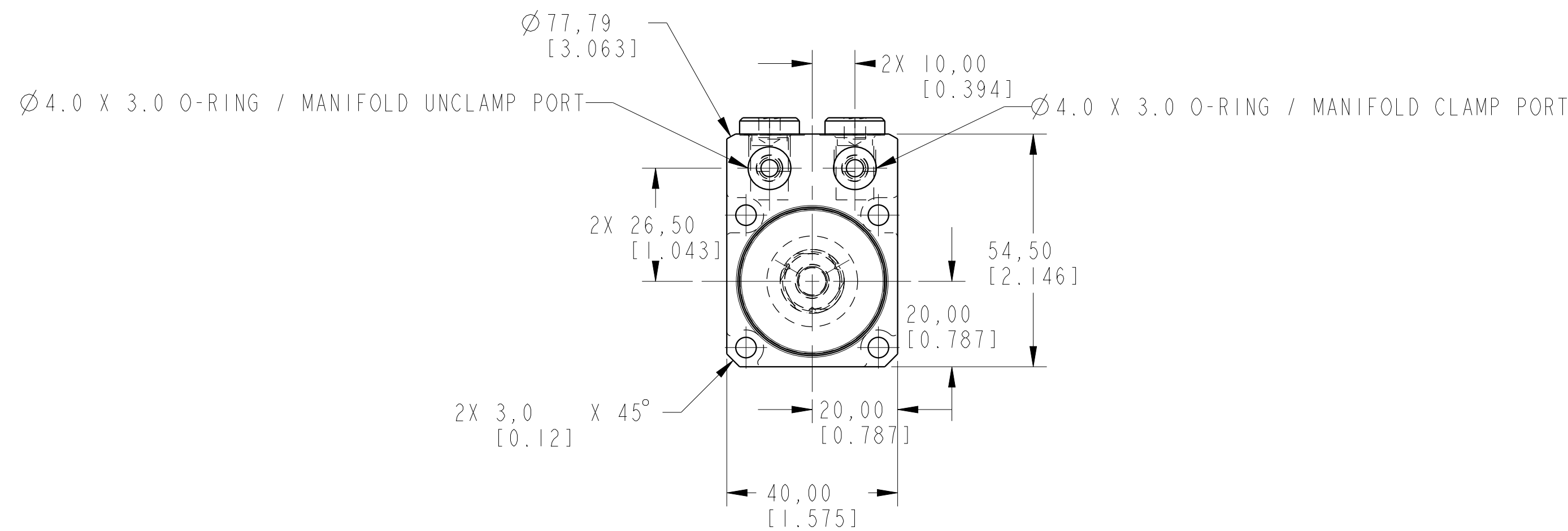


1

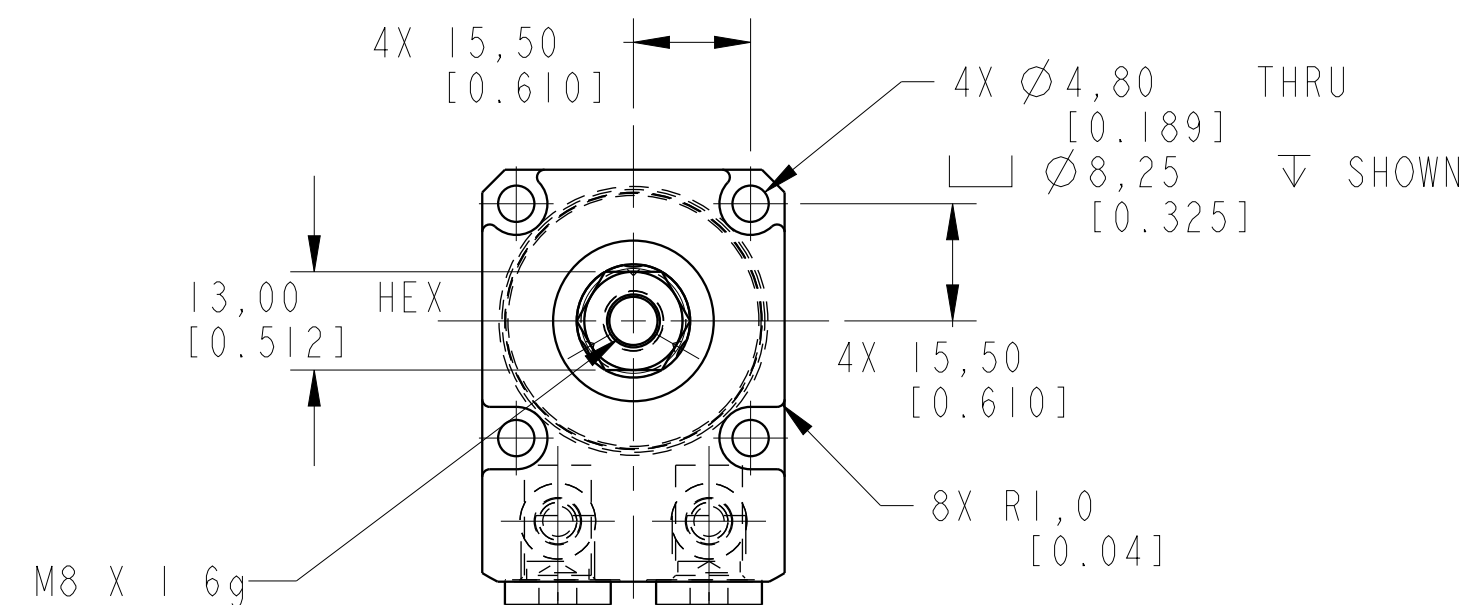
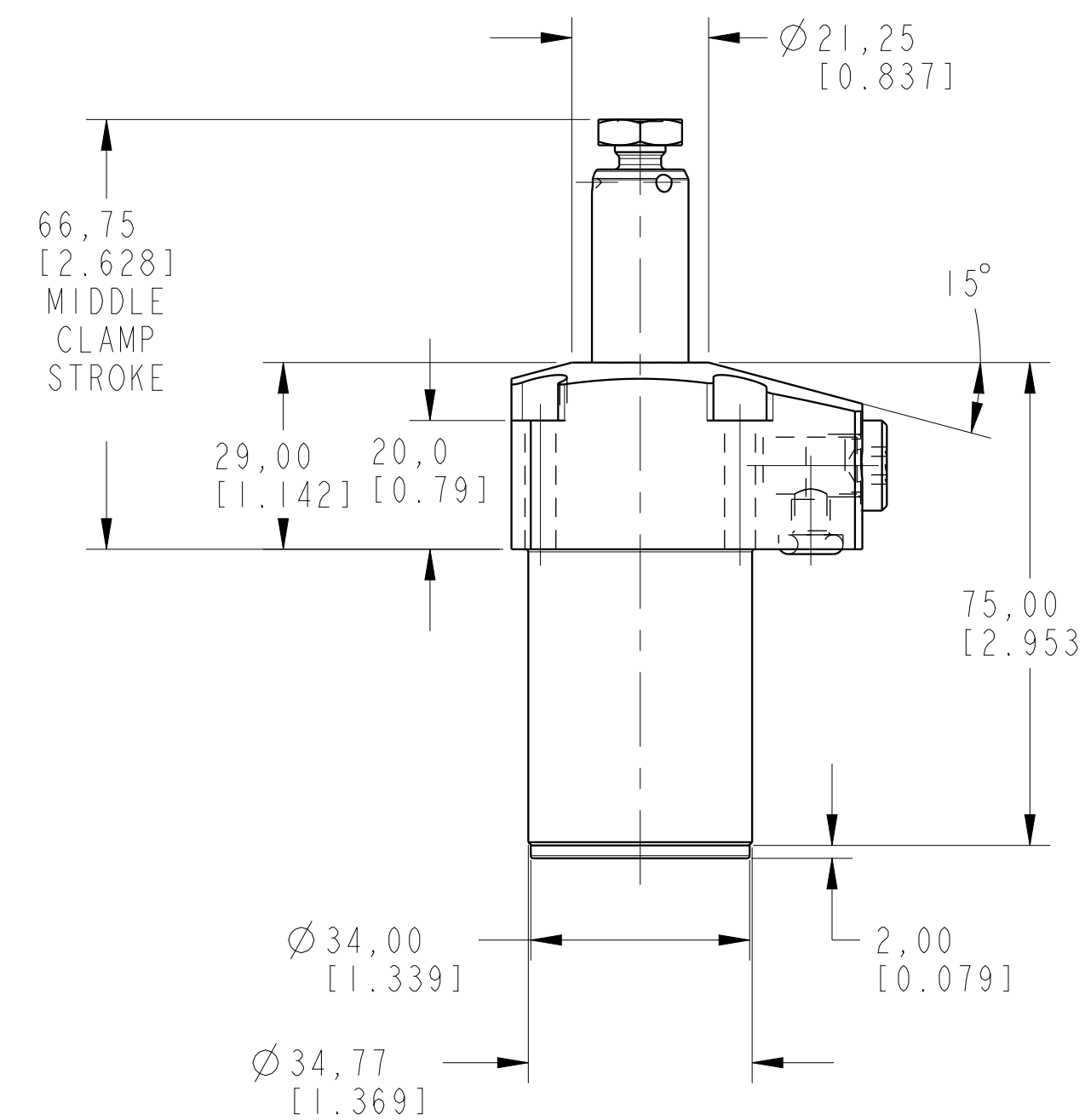
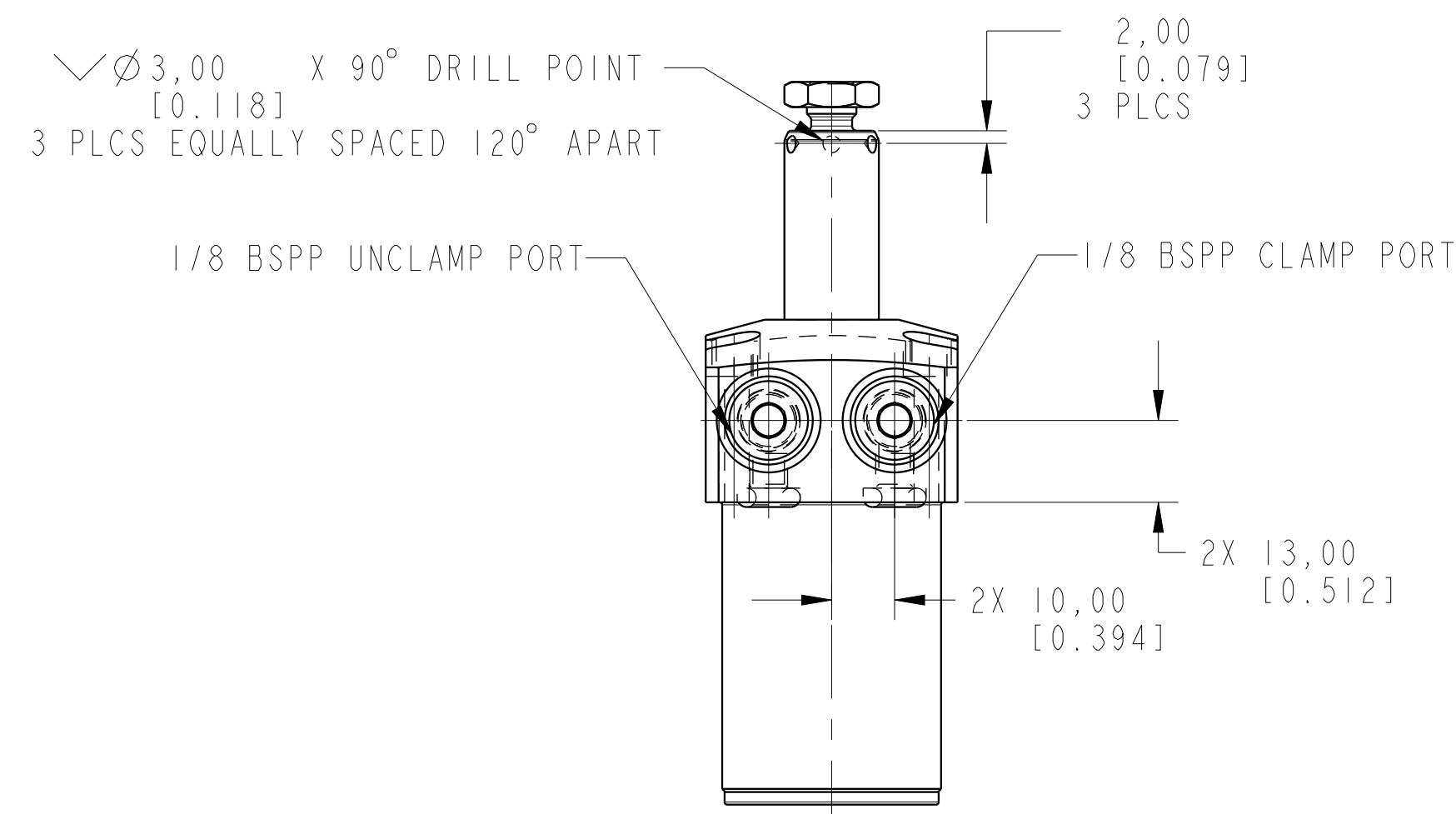
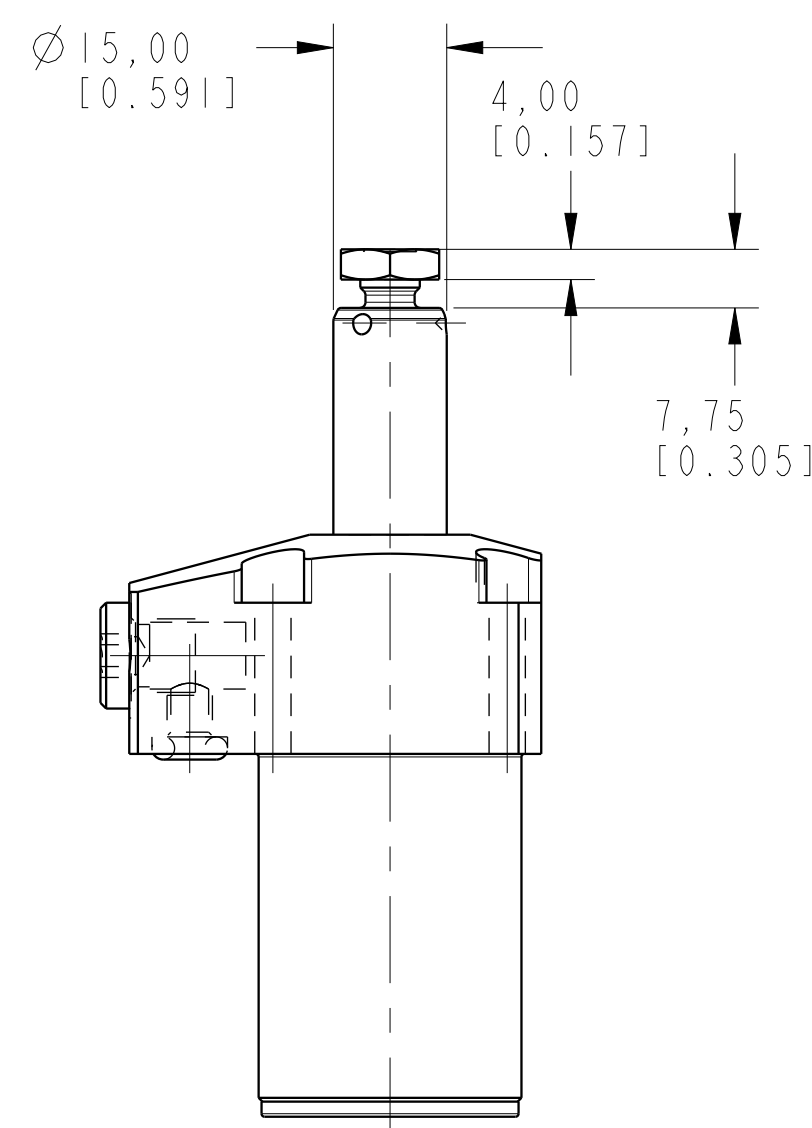
2

3

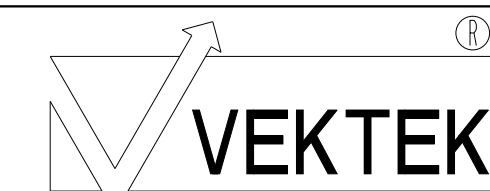
4



ILCML1402500S REV A ECN 3096



CAD CONTROL DRAWING



VEKTEK, INC.
 1334 E. SIXTH AVE. P.O. BOX 625
 EMPORIA, KS. 66801 U.S.A.

A	3096	RELEASE	MAJ	9/20/16
REV	IN ACCORDANCE WITH ECN	EFFECTIVE DATE	REVISED BY	DATE
DRW BY:	MAJ	DRAWING STATUS: Released		
DATE:	9/19/16	PRODUCTION APPROVED FOR RELEASED STATUS ONLY		

LI402500S	A	SC, TF, 7MPa, 25B, STR
TOLERANCES DO NOT APPLY DIMENSIONS ARE NOMINAL	UNITS mm (inch)	SIZE D
ILCML1402500S	REV A	

2

3

4

SHEET 1 OF 1