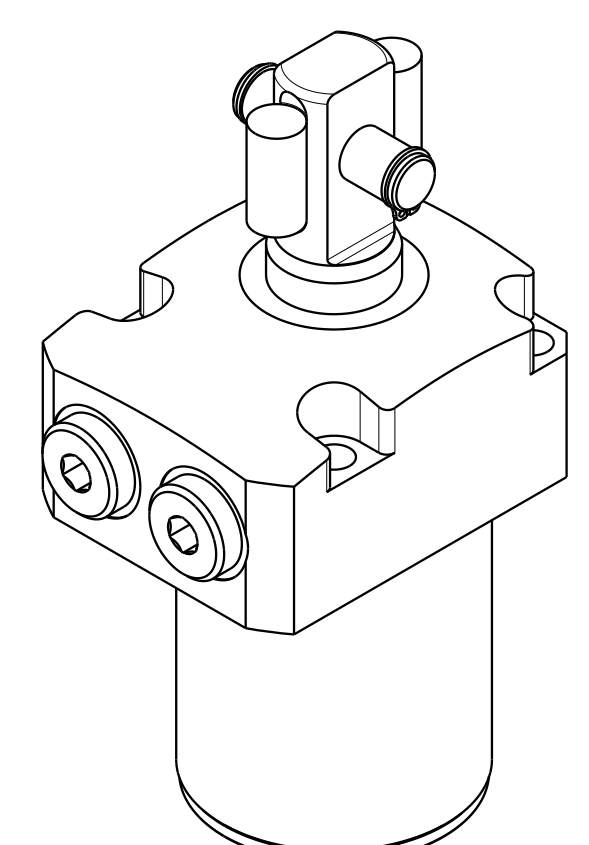
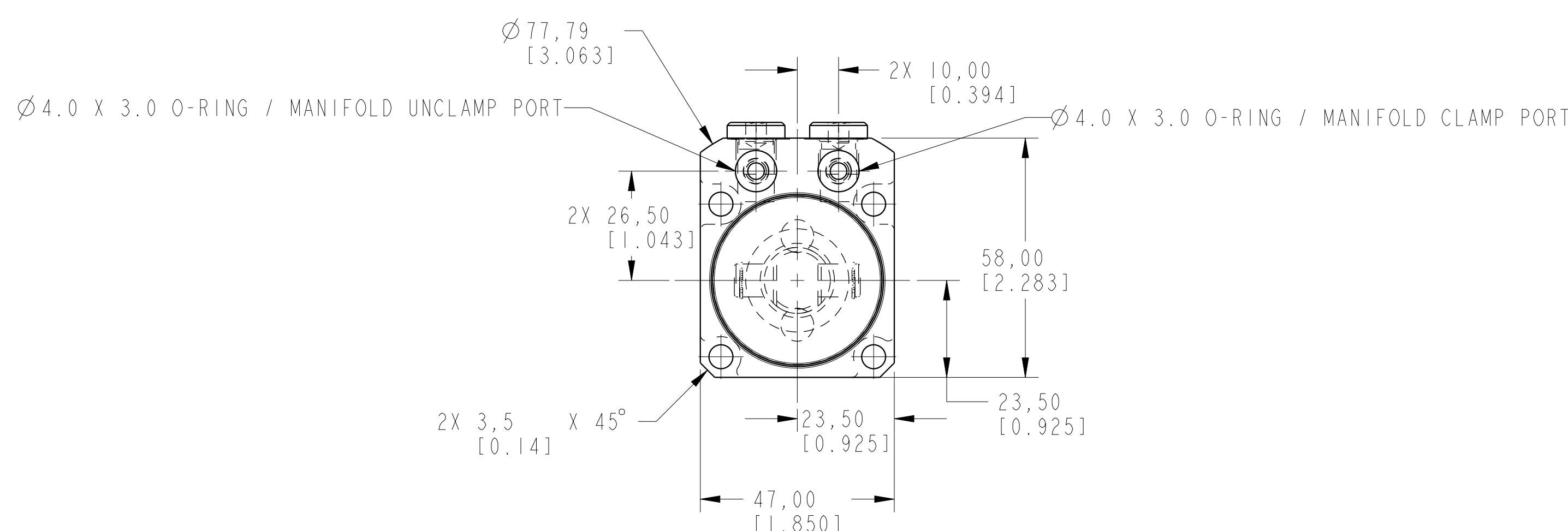


1

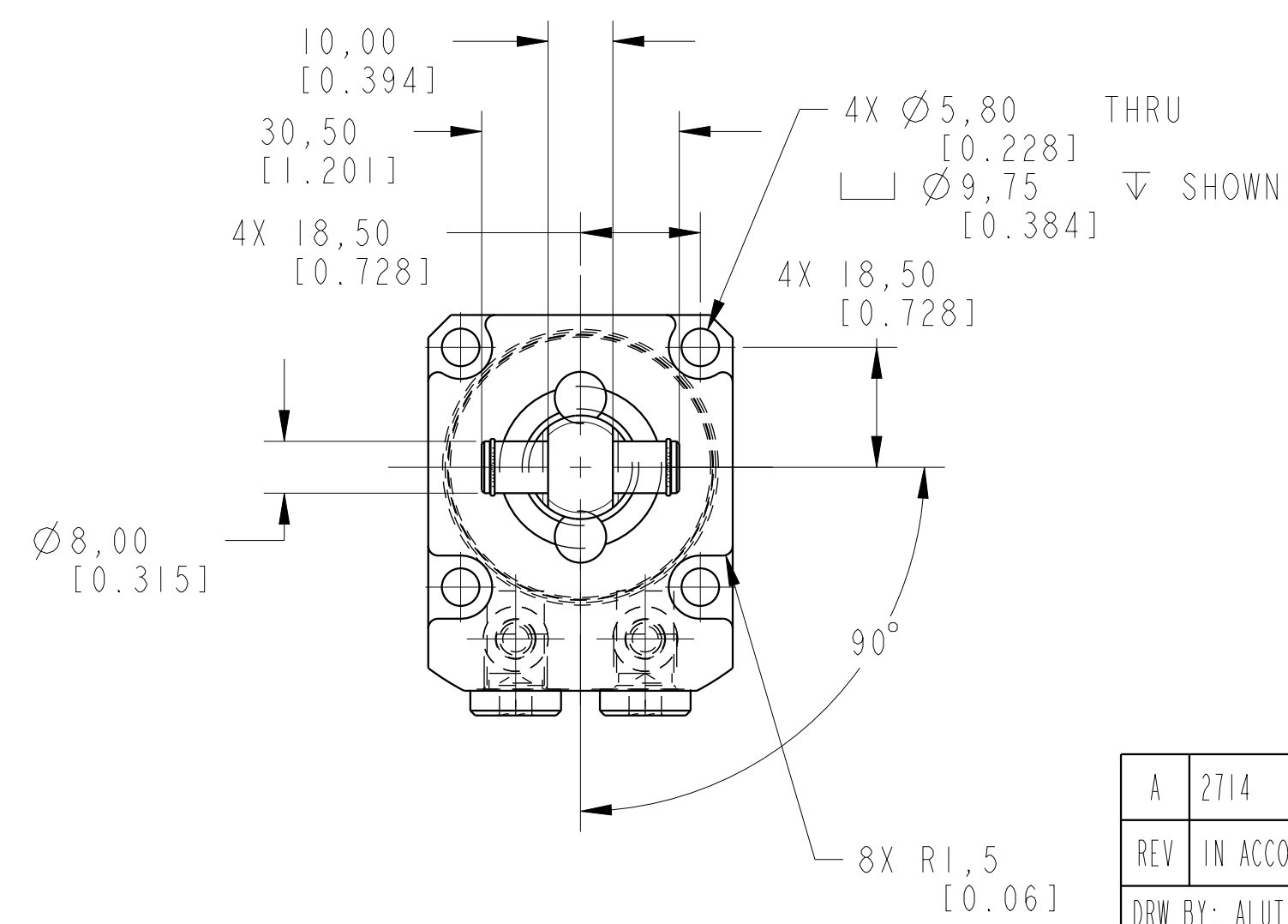
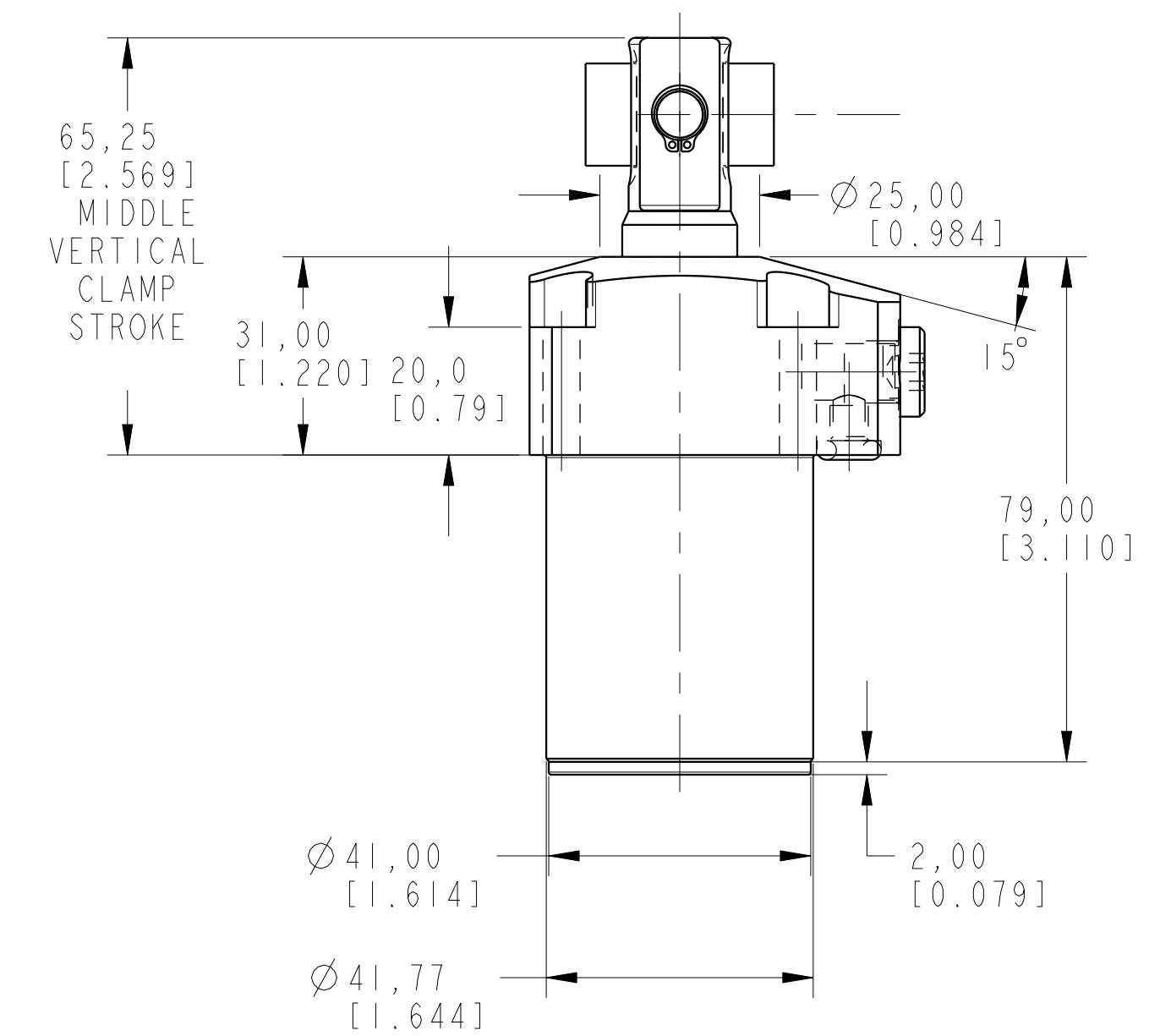
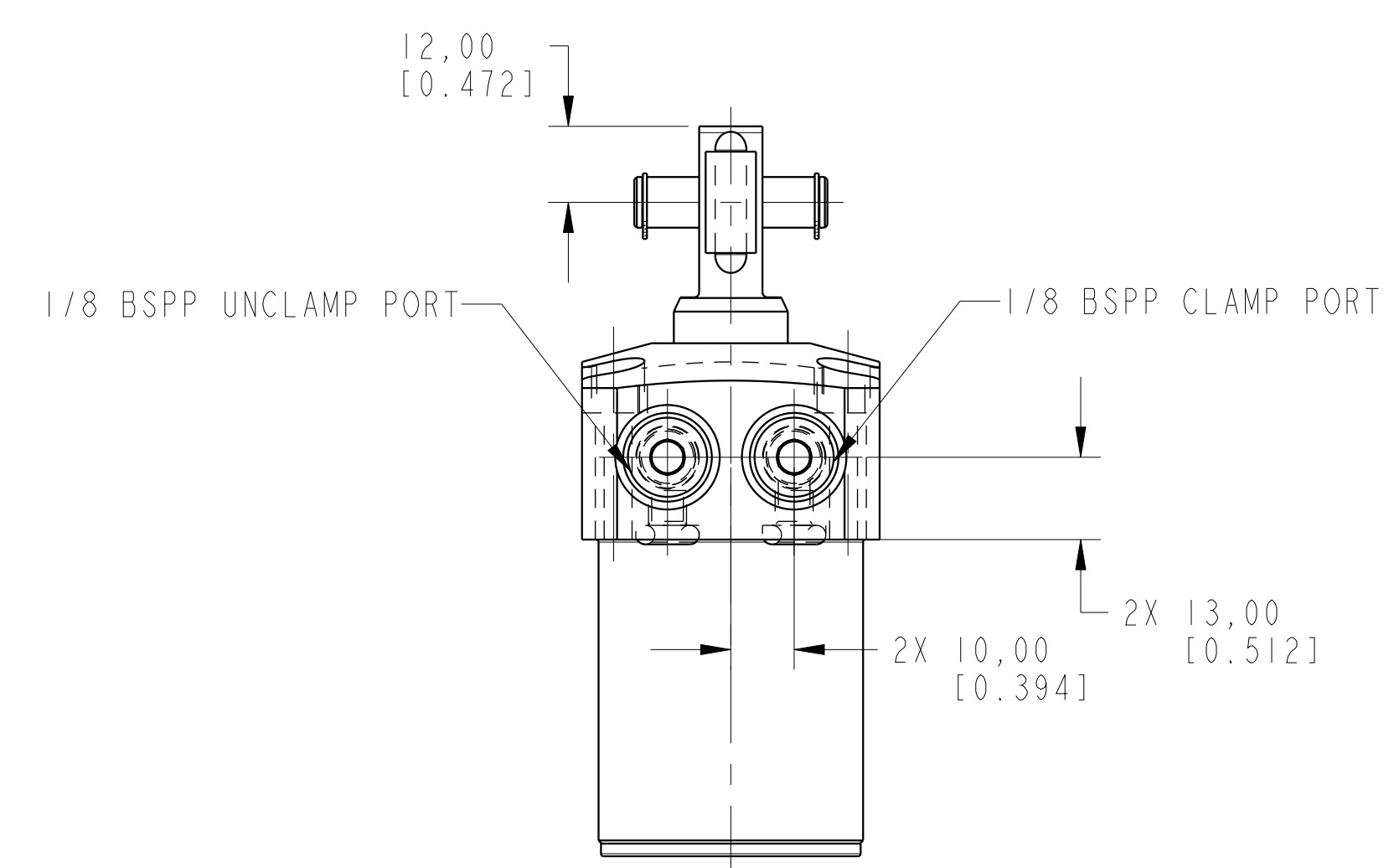
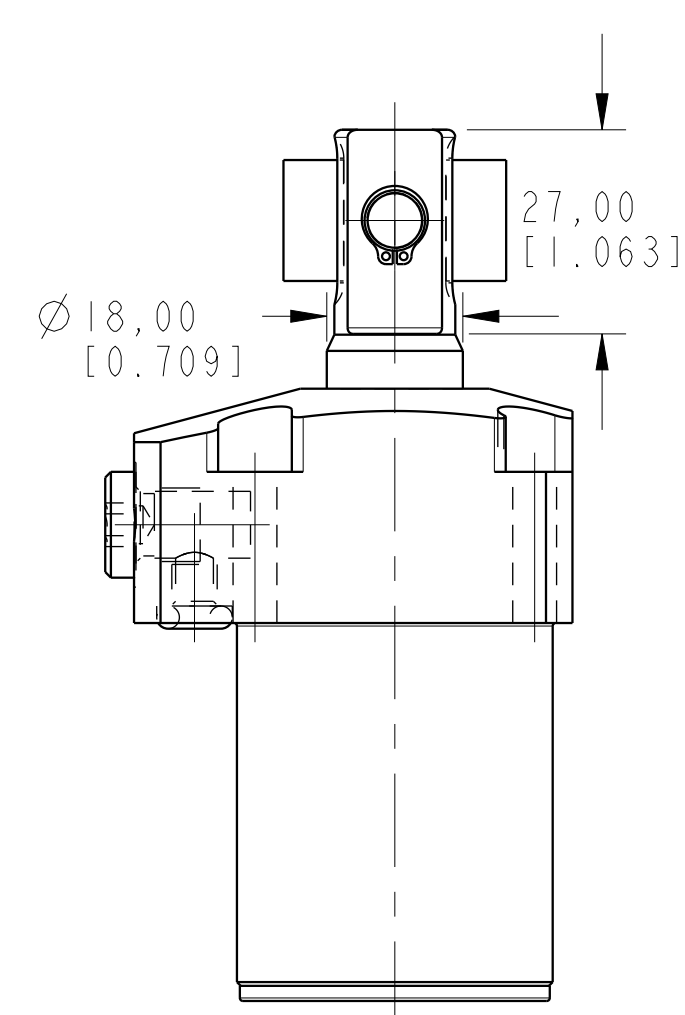
2

3

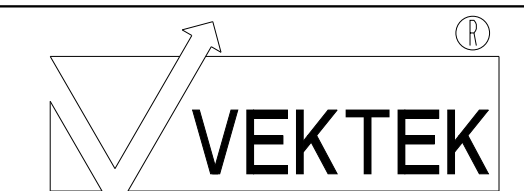
4



ILCML1403210L90 REV A ECN 2714



CAD CONTROL DRAWING



VEKTEK, INC.  
1334 E. SIXTH AVE. P.O. BOX 625  
EMPORIA, KS. 66801 U.S.A.

A	2714	RELEASE	MAJ	3-25-15
REV	IN ACCORDANCE WITH ECN	EFFECTIVE DATE	REVISED BY	DATE
DRW BY:	ALUTHI	DRAWING STATUS: <b>Released</b>		
DATE:	8-13-14	PRODUCTION APPROVED FOR RELEASED STATUS ONLY		

LI-4032-10-L-90	A	SC, TF, 7MPa, 32B, LH, CLEVIS, 90
REFERENCE MODEL	REF REV	*****
TOLERANCES DO NOT APPLY DIMENSIONS ARE NOMINAL		SIZE D

ILCML1403210L90	REV A
FORM FEG036, Rev. B	

2

3

4

SHEET 1 OF 1