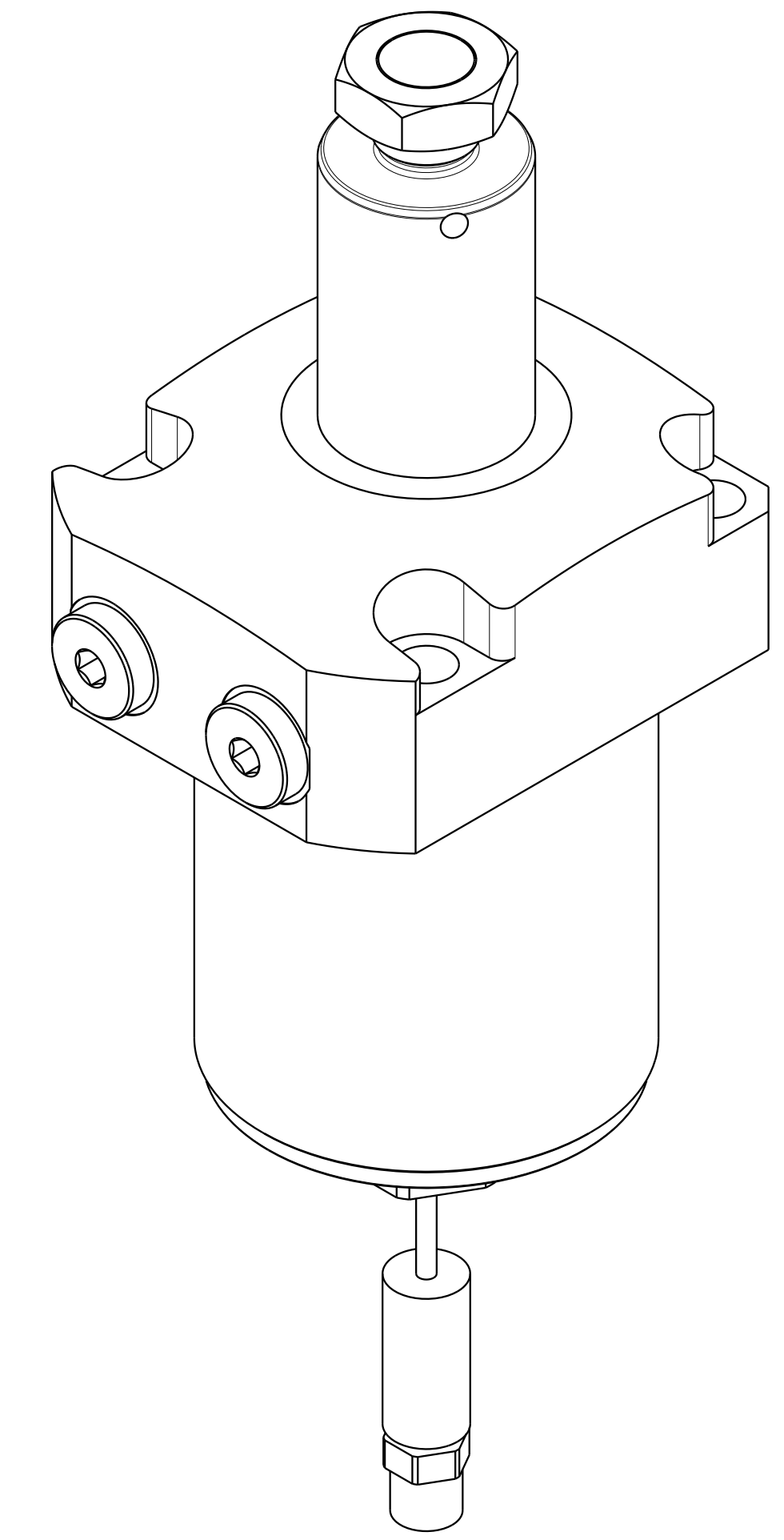
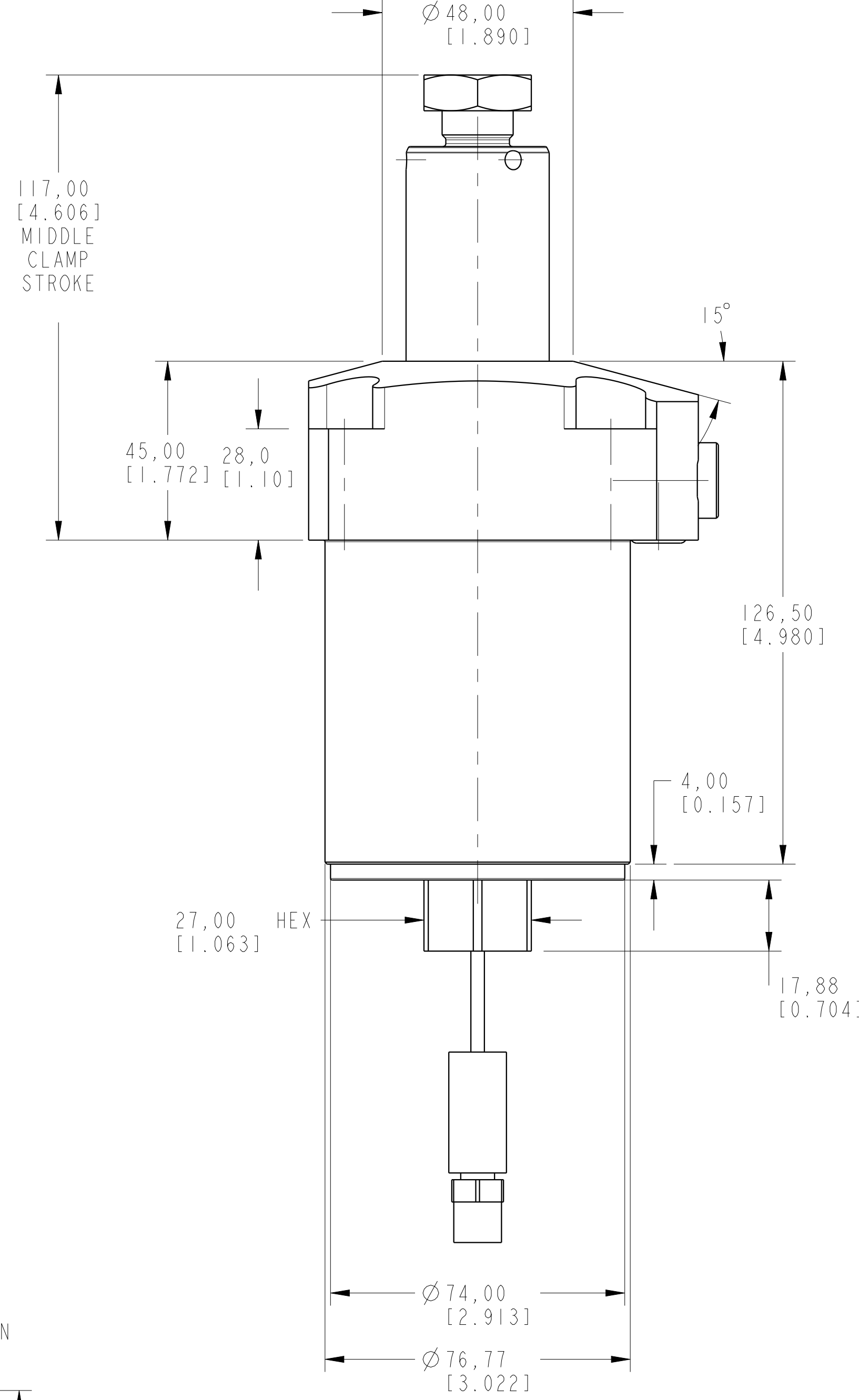
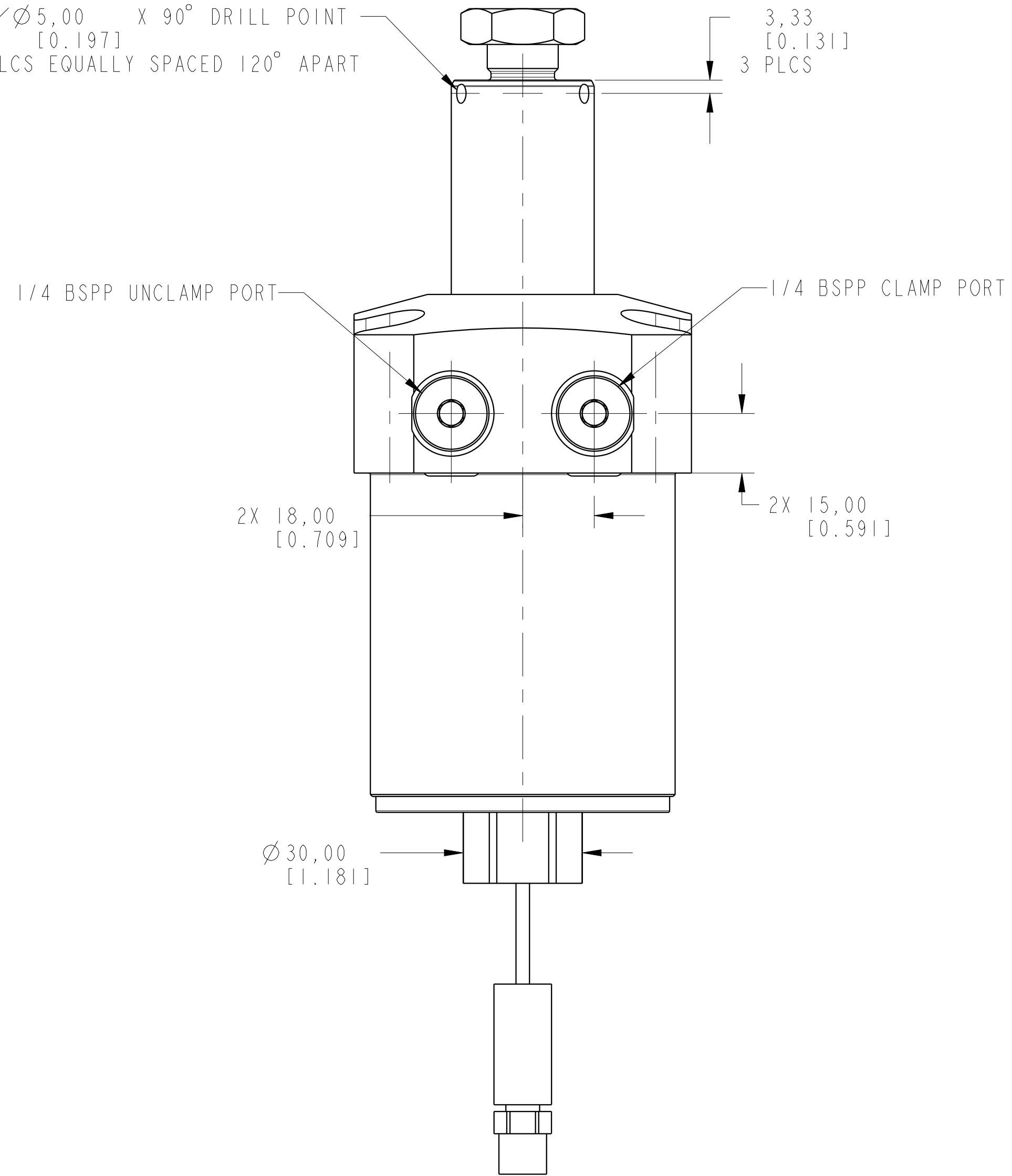
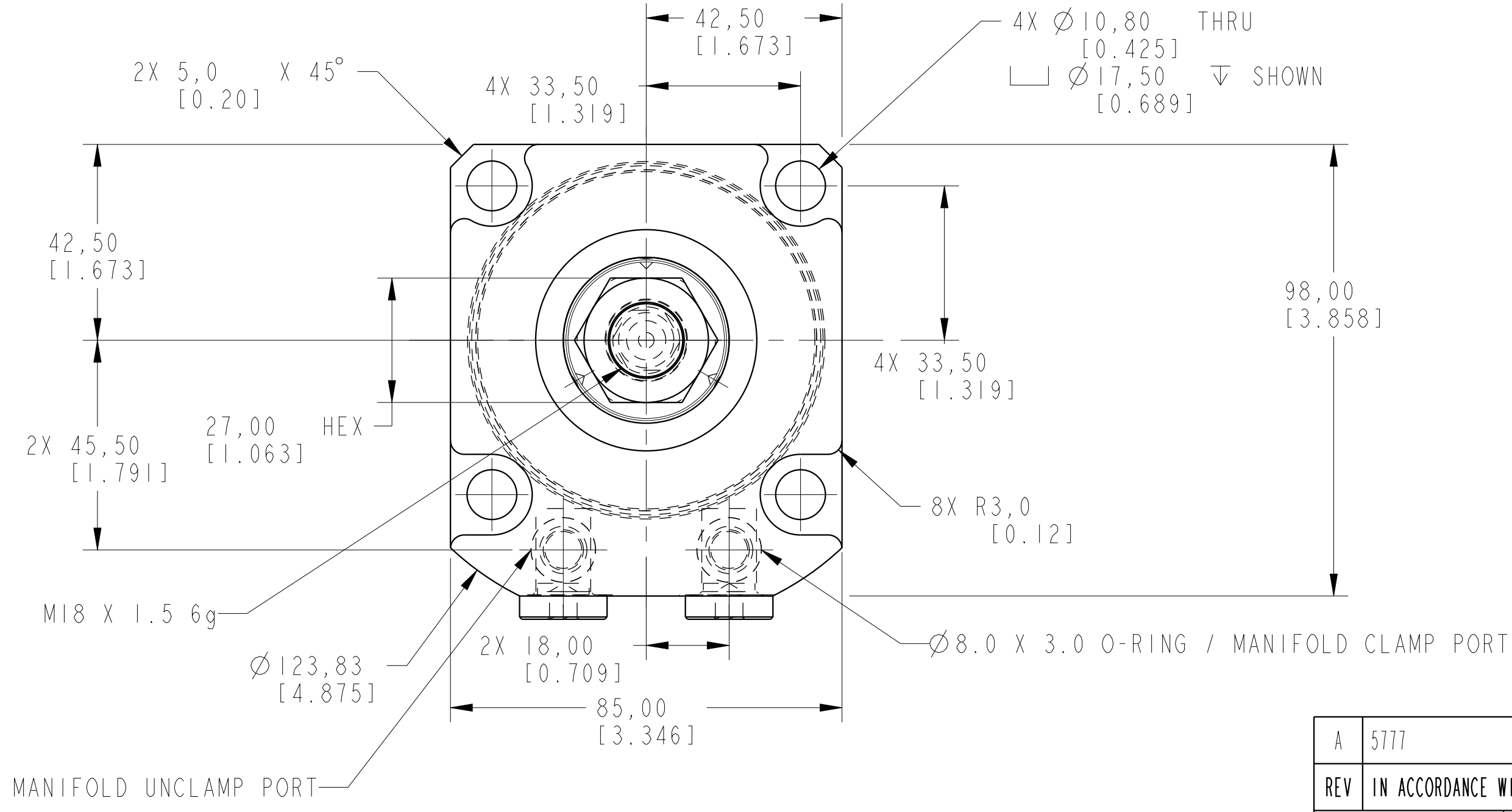


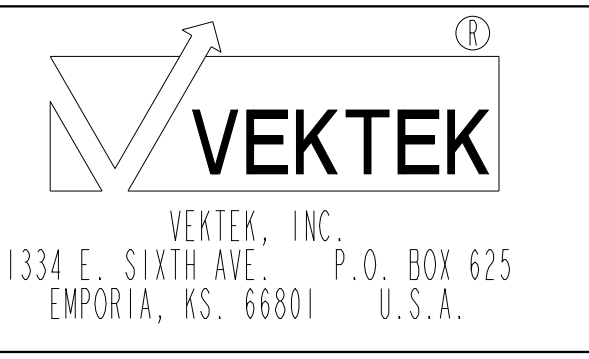
$\checkmark \varnothing 5,00$  X 90° DRILL POINT  
 [0.197]  
 3 PLCS EQUALLY SPACED 120° APART



ILCML1406300LUS REV A ECN 5777



**CAD CONTROL DRAWING**



A	5777	RELEASE	ALS	8/26/25
REV	IN ACCORDANCE WITH ECN	EFFECTIVE DATE	REVISED BY	DATE
DRW BY:	ALS	DRAWING STATUS: <b>Released</b>		
DATE:	7/30/25	PRODUCTION APPROVED FOR RELEASED STATUS ONLY		

L1406300LUS	A	SC, TF, 7MP $\alpha$ , 63B, LH, US
TOLERANCES DO NOT APPLY DIMENSIONS ARE NOMINAL	UNITS mm (inch)	SIZE D
ILCML1406300LUS		REV A