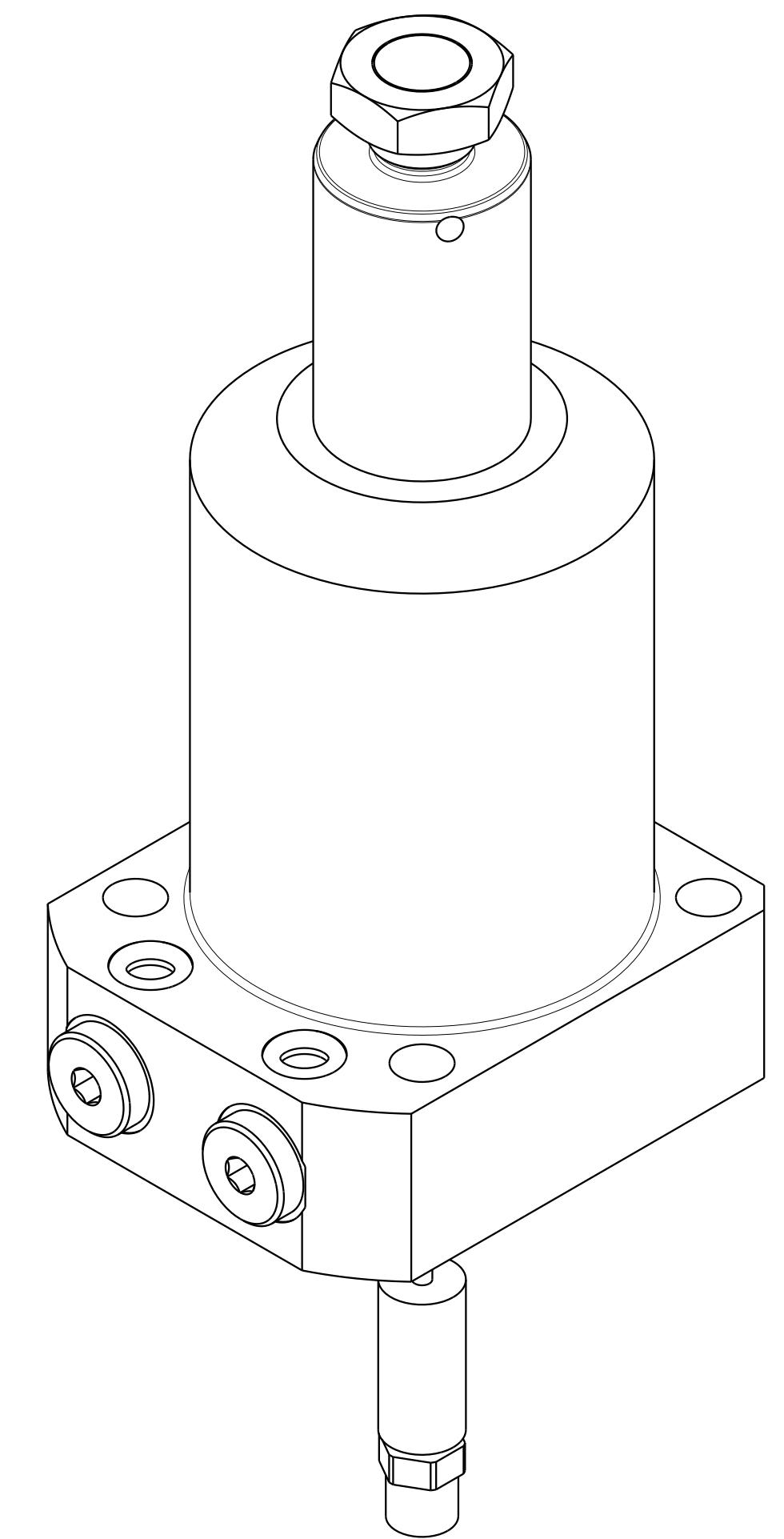
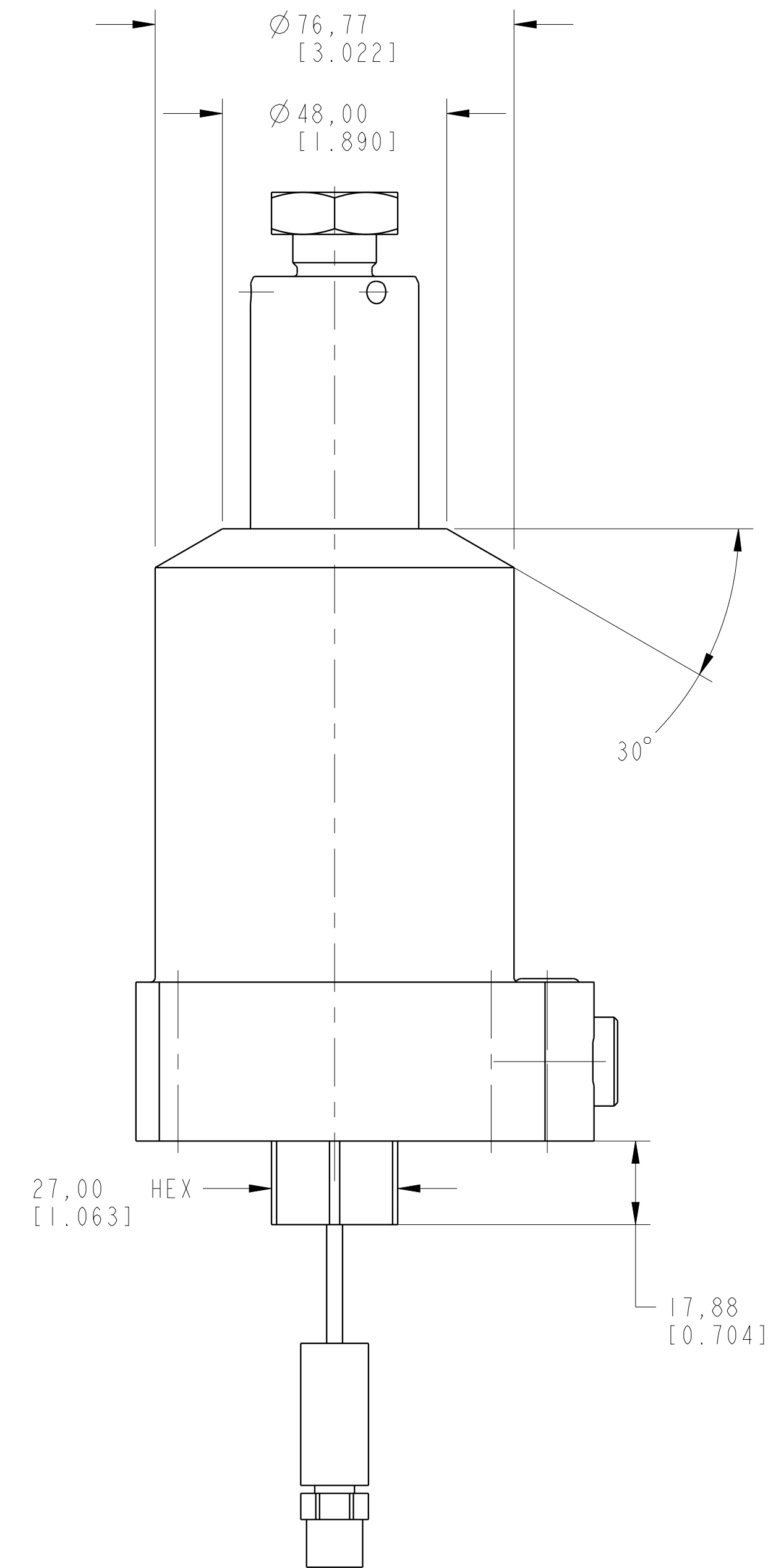
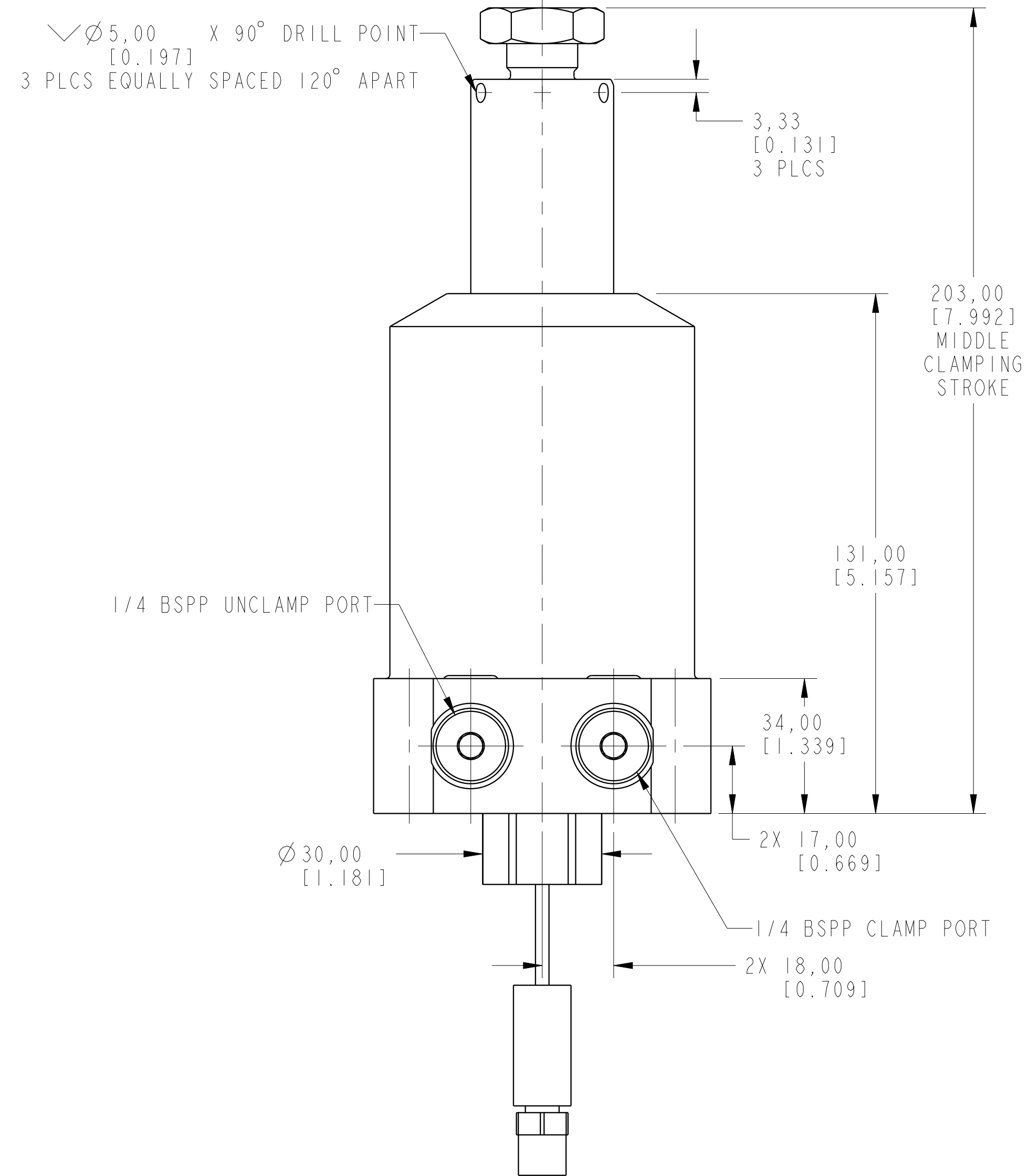
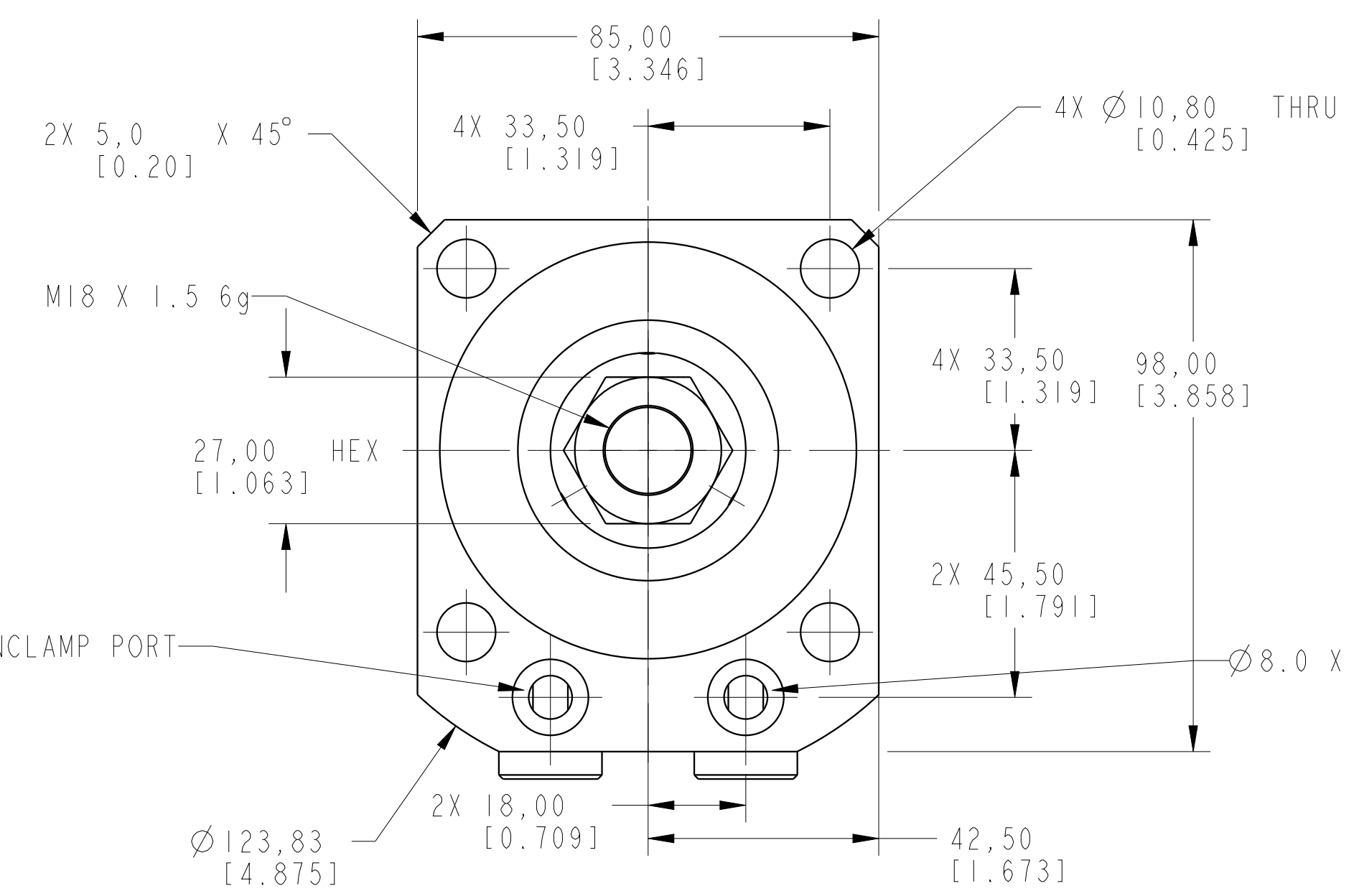


∇ ∅5.00 X 90° DRILL POINT  
[0.197]  
3 PLCS EQUALLY SPACED 120° APART



1LCML1416300LUS REV A ECN 5777



|                            |                        |  |            |  |                         |           |
|----------------------------|------------------------|--|------------|--|-------------------------|-----------|
| <b>CAD CONTROL DRAWING</b> |                        |  |            |  |                         |           |
|                            |                        |  |            | VEKTEK, INC.<br>1334 E. SIXTH AVE. P.O. BOX 625<br>EMPORIA, KS. 66801 U.S.A. |                         |           |
| A                          | 5777                   | RELEASE                                      | ALS        | 8/26/25  | L1416300LUS             |           |
| REV                        | IN ACCORDANCE WITH ECN | EFFECTIVE DATE                               | REVISED BY | DATE   | REF REV                 |           |
| DRW BY:                    | ALS                    | DRAWING STATUS: <b>Released</b>              |            |  | TOLERANCES DO NOT APPLY | UNITS     |
| DATE:                      | 7/30/25                | PRODUCTION APPROVED FOR RELEASED STATUS ONLY |            |  | DIMENSIONS ARE NOMINAL  | mm (inch) |
|                            |                        |  |            | SIZE   | D                       |           |
|                            |                        |  |            | REV  | A                       |           |
|                            |                        |  |            | FORM FEG036, Rev. C  |                         |           |