

∠5.00 X 90° DRILL POINT  
[0.197]  
3 PLCS EQUALLY SPACED 120° APART

1/4 BSPP UNCLAMP PORT

M12 A CODED  
MALE PLUG

∅30.00  
[1.181]

34.00  
[1.339]

2X 17.00  
[0.669]

1/4 BSPP CLAMP PORT

2X 18.00  
[0.709]

203.00  
[7.992]  
MIDDLE  
CLAMPING  
STROKE

131.00  
[5.157]

2X 5.0  
[0.20] X 45°

42.50  
[1.673]  
4X 33.50  
[1.319]

4X ∅10.80 THRU  
[0.425]

M18 X 1.5 6g

27.00  
[1.063] HEX

4X 33.50  
[1.319]

98.00  
[3.858]

2X 45.50  
[1.791]

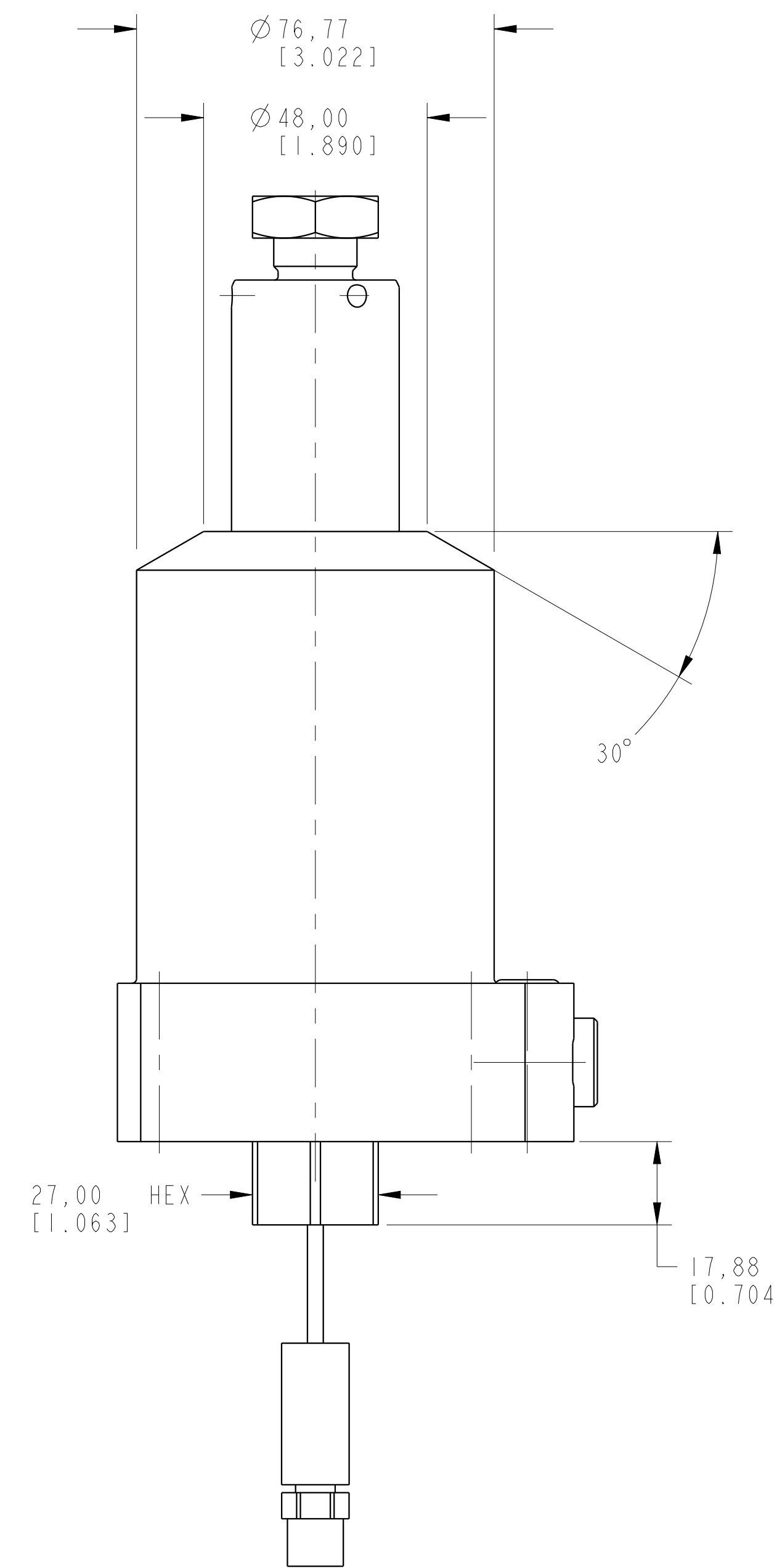
∅8.0 X 3.0 O-RING / MANIFOLD UNCLAMP PORT

∅8.0 X 3.0 O-RING / MANIFOLD CLAMP PORT

∅123.83  
[4.875]

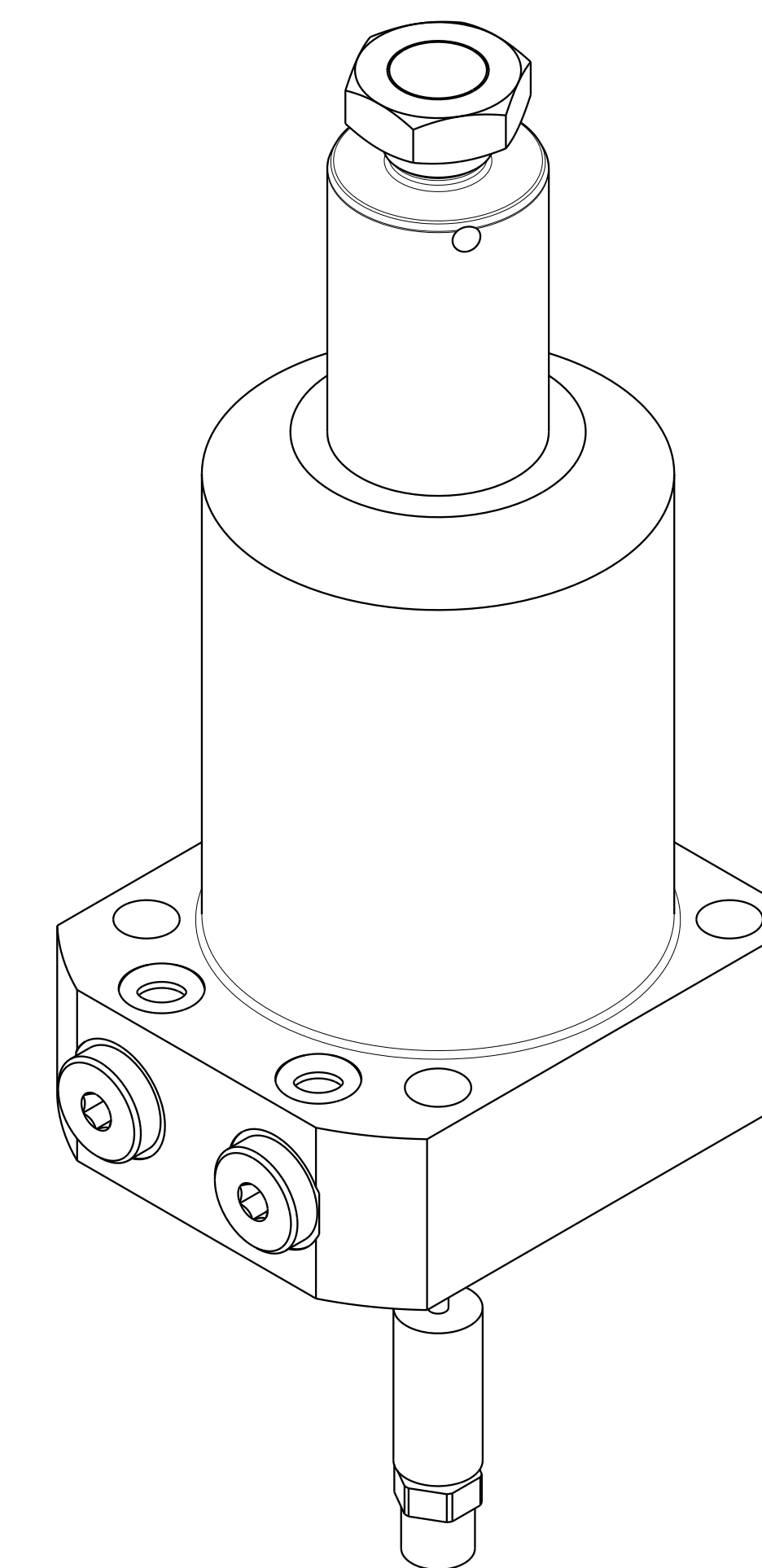
2X 18.00  
[0.709]

85.00  
[3.346]



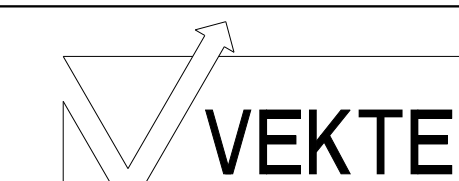
27.00  
[1.063] HEX

17.88  
[0.704]



1LCML1416300RUS REV A ECN 5777

CAD CONTROL  
DRAWING



VEKTEK, INC.  
1334 E. SIXTH AVE. P.O. BOX 625  
EMPORIA, KS. 66801 U.S.A.

A	5777	RELEASE	ALS	8/26/25	L1416300RUS	A	SC, BF, 7MPa, 63B, RH, US
REV	IN ACCORDANCE WITH ECN	EFFECTIVE DATE	REVISED BY	DATE	REFERENCE MODEL	REF REV	
DRW BY:	ALS	DRAWING STATUS: Released			TOLERANCES DO NOT APPLY	UNITS	SIZE
DATE:	7/30/25	PRODUCTION APPROVED FOR RELEASED STATUS ONLY			DIMENSIONS ARE NOMINAL	mm (inch)	D
					1LCML1416300RUS		REV A