

$\sphericalangle \varnothing 6,00$ X 90° DRILL POINT
[0.236]
3 PLCS EQUALLY SPACED 120° APART

235,50
[9.272]
MIDDLE
CLAMPING
STROKE

1/4 BSPP UNCLAMP PORT

35,00
[1.378]
2X 20,00
[0.787]

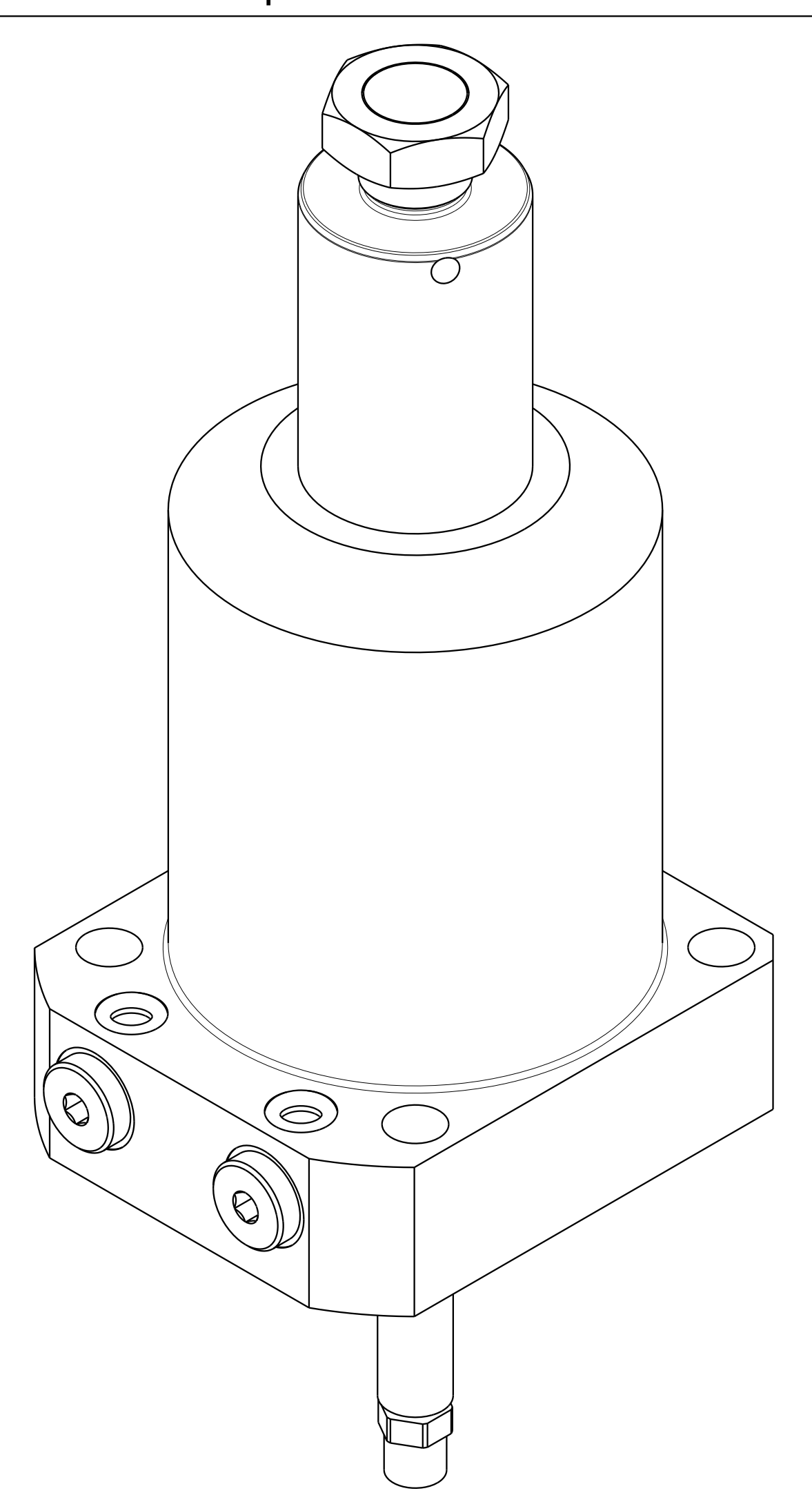
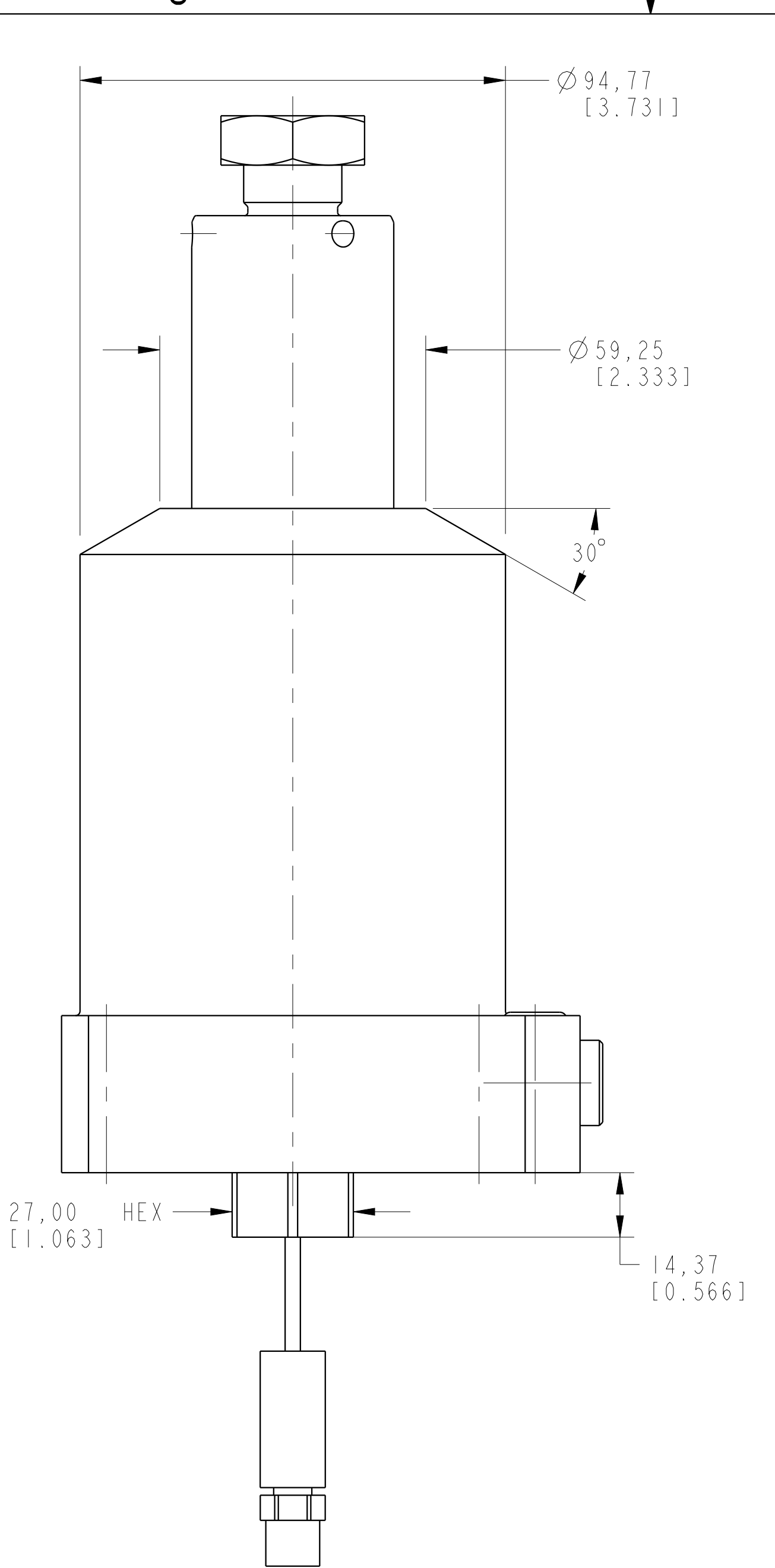
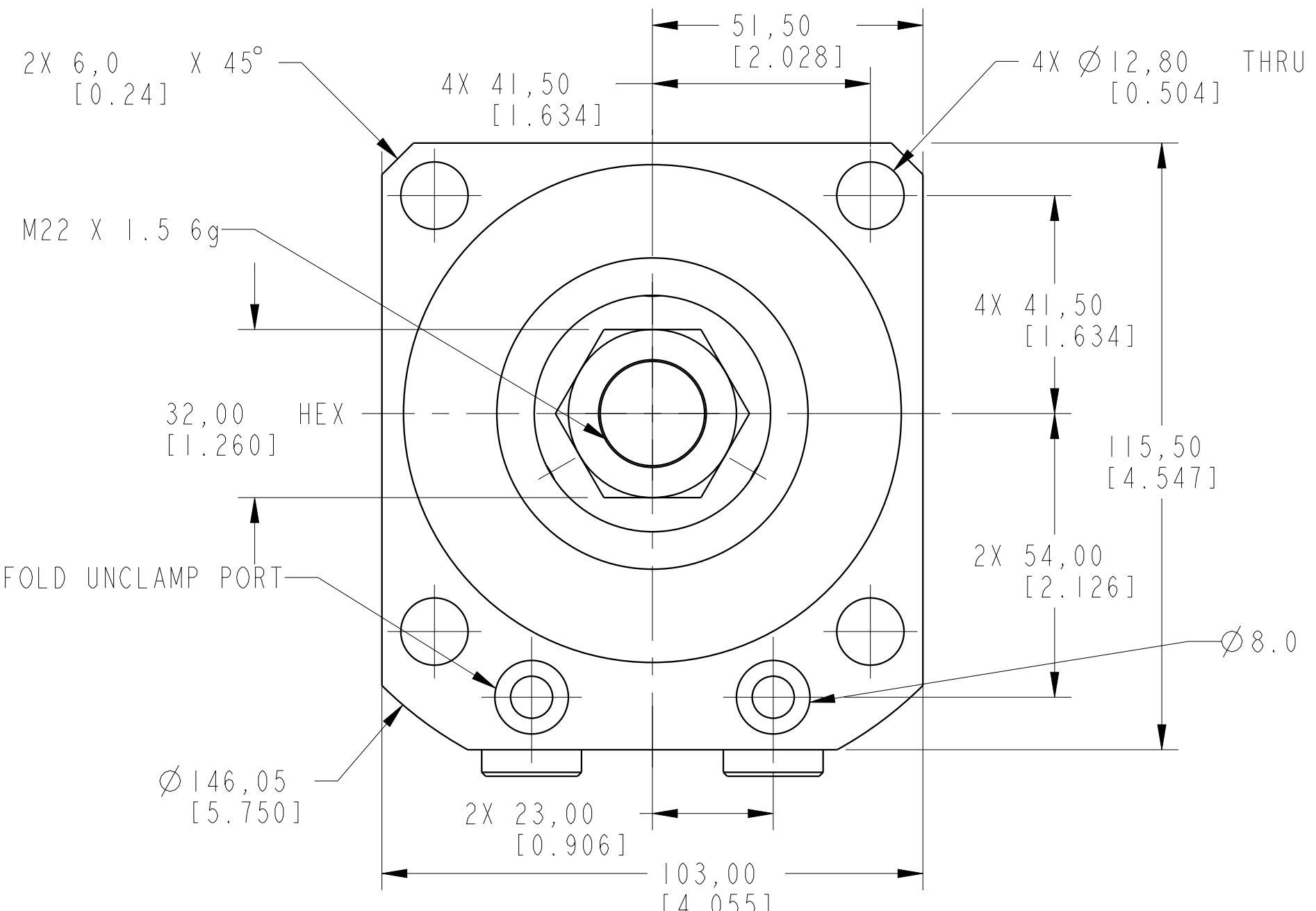
$\varnothing 30,00$
[1.181]

1/4 BSPP CLAMP PORT

2X 23,00
[0.906]

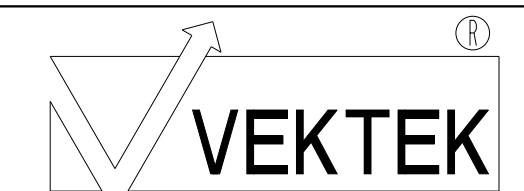
1m CABLE
[39.4]

M12 A CODED
MALE PLUG



ILCML1418000RUS REV A ECN 5777

CAD CONTROL
DRAWING



VEKTEK, INC.
1334 E. SIXTH AVE. P.O. BOX 625
EMPORIA, KS. 66801 U.S.A.

A	5777	RELEASE	ALS	8/26/25
REV	IN ACCORDANCE WITH ECN	EFFECTIVE DATE	REVISED BY	DATE
DRW BY:	ALS	DRAWING STATUS: Released		
DATE:	7/30/25	PRODUCTION APPROVED FOR RELEASED STATUS ONLY		

L1418000RUS	A	SC, BF, 7MP α , 80B, RH, US
TOLERANCES DO NOT APPLY DIMENSIONS ARE NOMINAL	UNITS mm (inch)	SIZE D

ILCML1418000RUS	REV A
FORM FEG036, Rev. C	