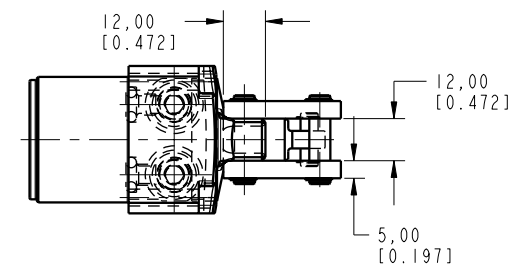
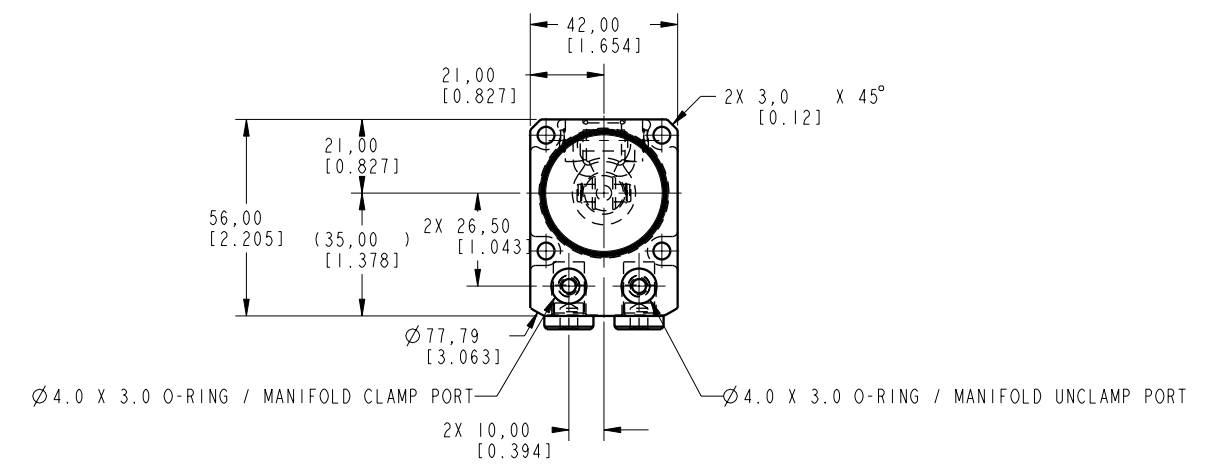
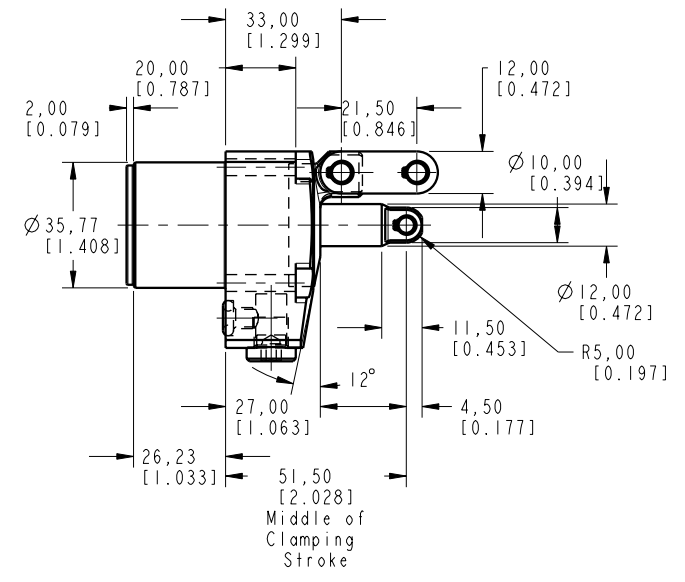
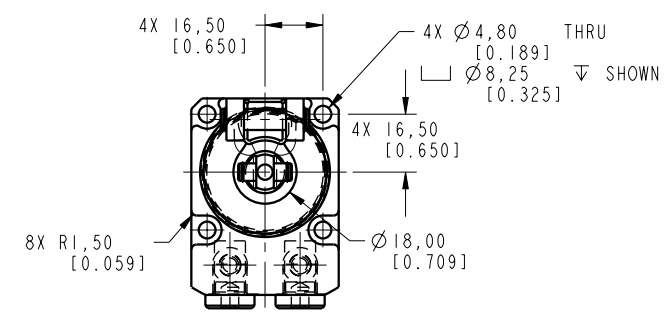


ILCML1602500 REV A ECN 2549



**CAD CONTROL DRAWING**

VEKTEK, INC.  
1334 E. SIXTH AVE. P.O. BOX 625  
EMPORIA, KS. 66801 U.S.A.

A	2549	RELEASE	OMITCHELL	7-11-13	L1602500	A	LC, 7MPa, 25B	
REV	IN ACCORDANCE WITH ECN	EFFECTIVE DATE	REVISED BY	DATE	REFERENCE MODEL	REF REV	*****	
DRW BY:	ALUTHI	DRAWING STATUS: <b>Released</b>			TOLERANCES DO NOT APPLY	UNITS	SIZE	
DATE:	6-12-13	PRODUCTION APPROVED FOR RELEASED STATUS ONLY			DIMENSIONS ARE NOMINAL	mm [inch]	D	
							ILCML1602500	REV A
							FORM FEQ036, Rev. B	