

1

2

3

4

D

D

C

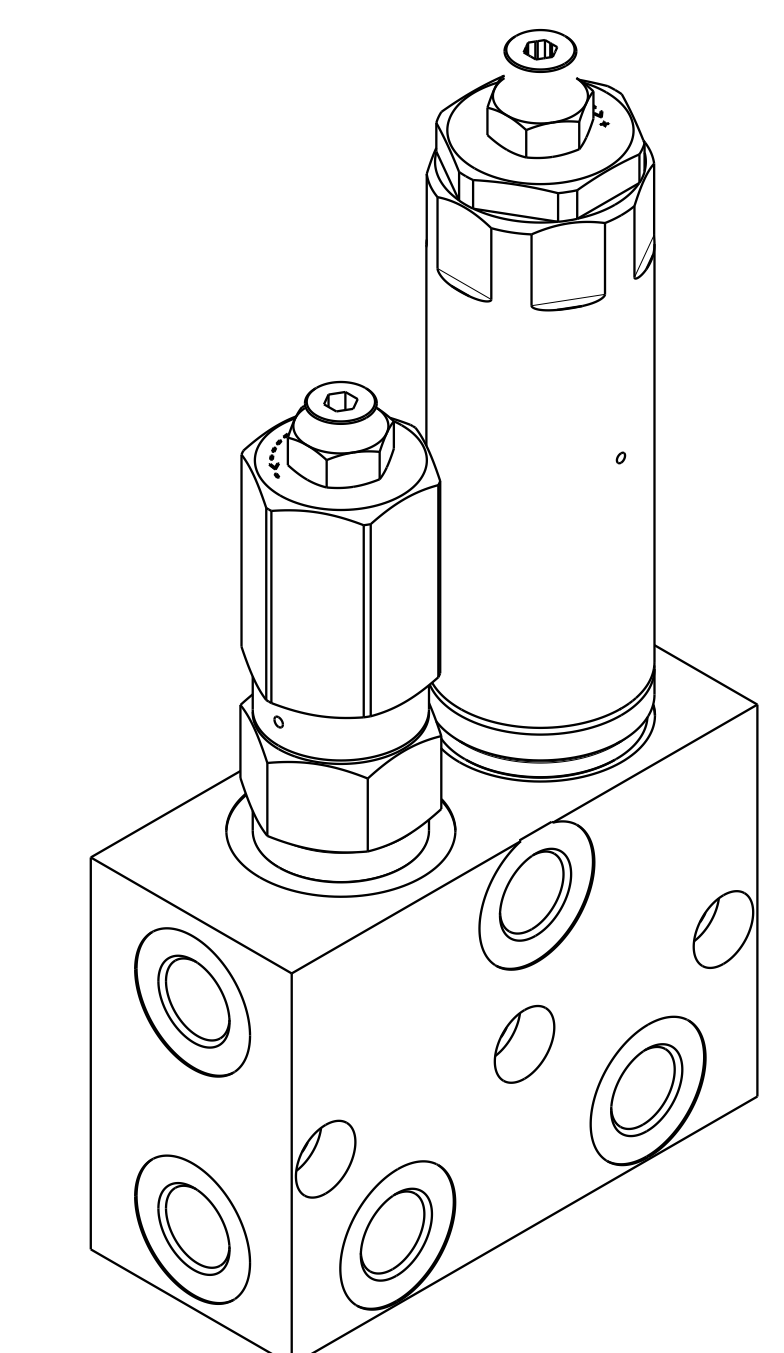
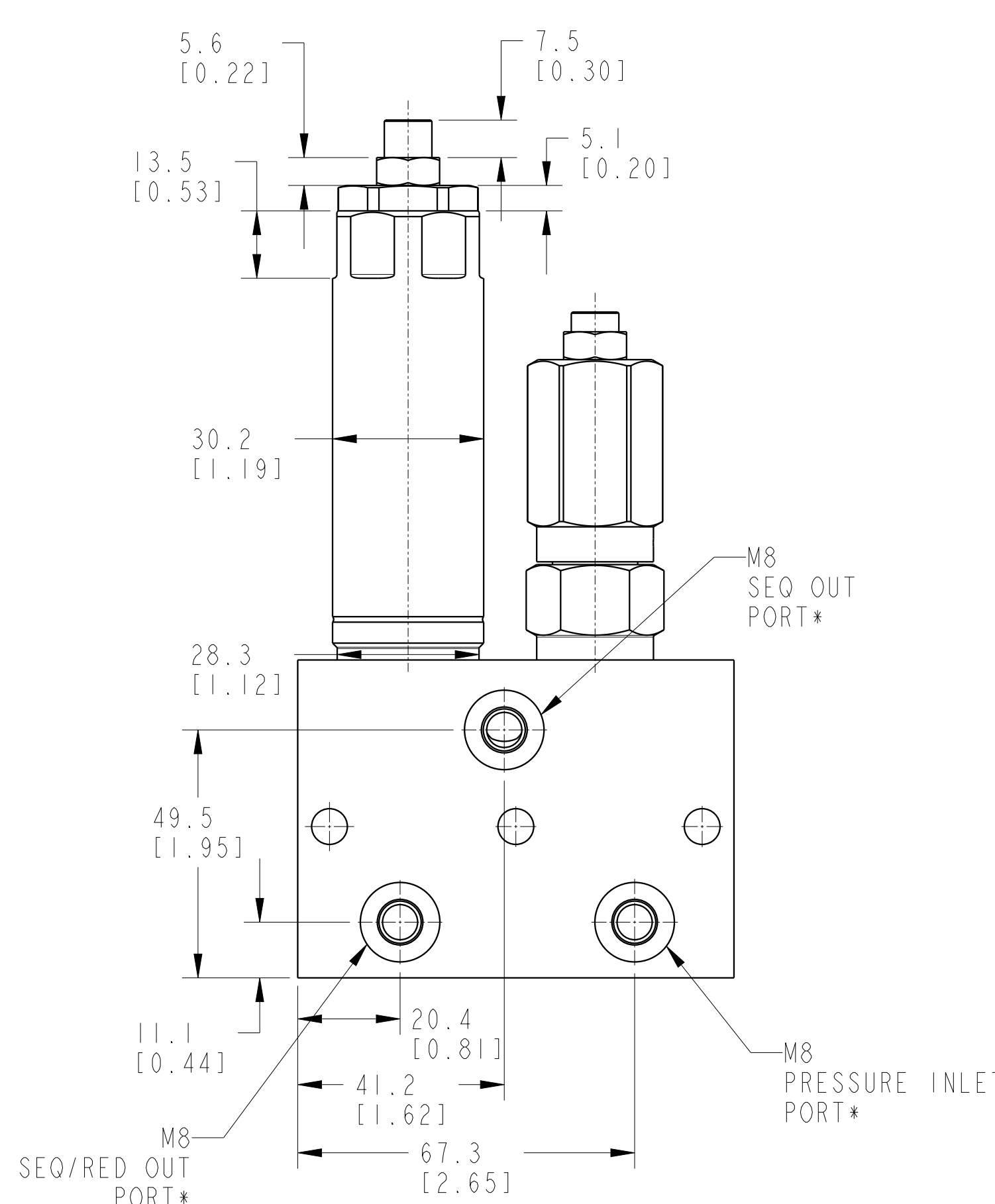
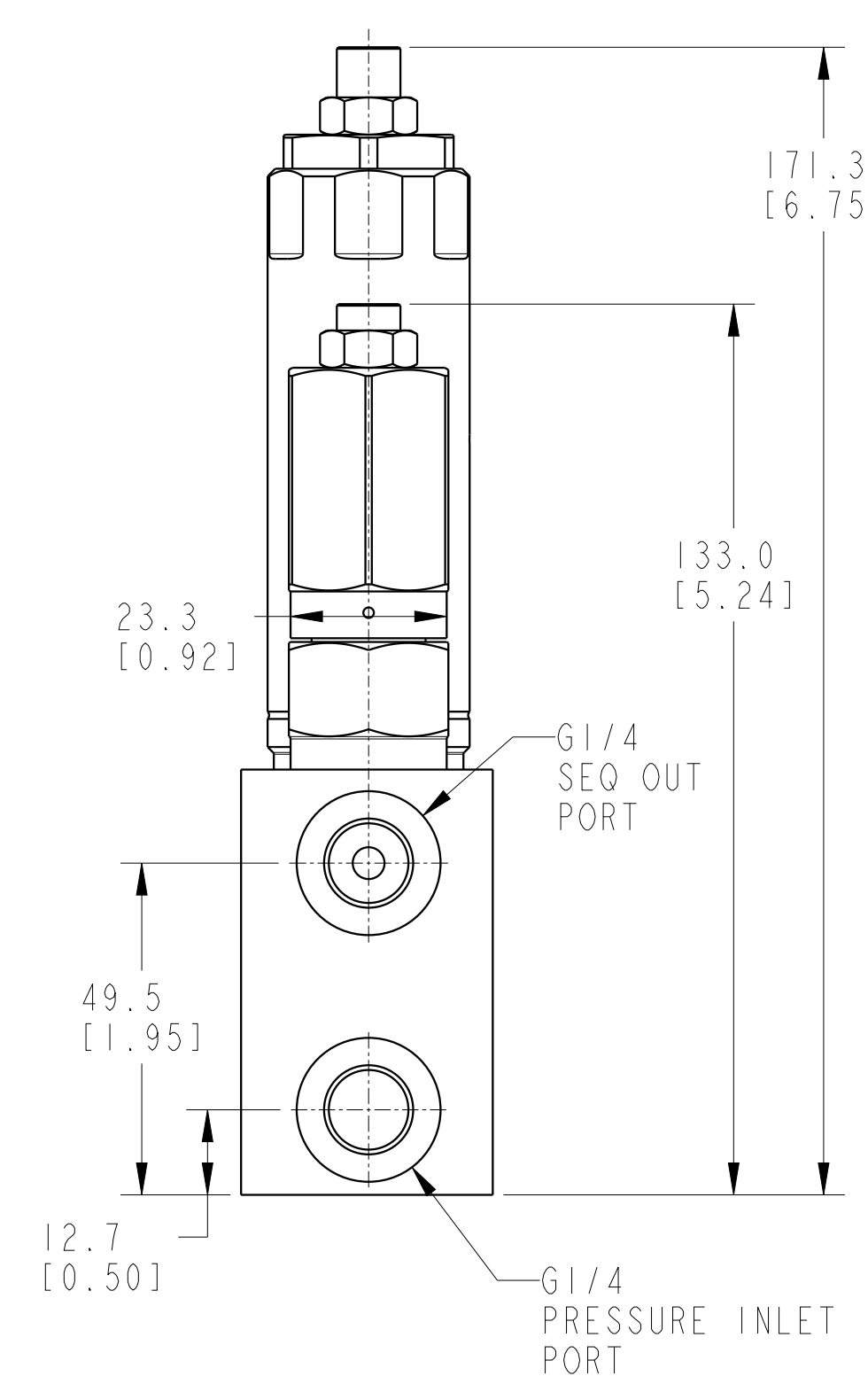
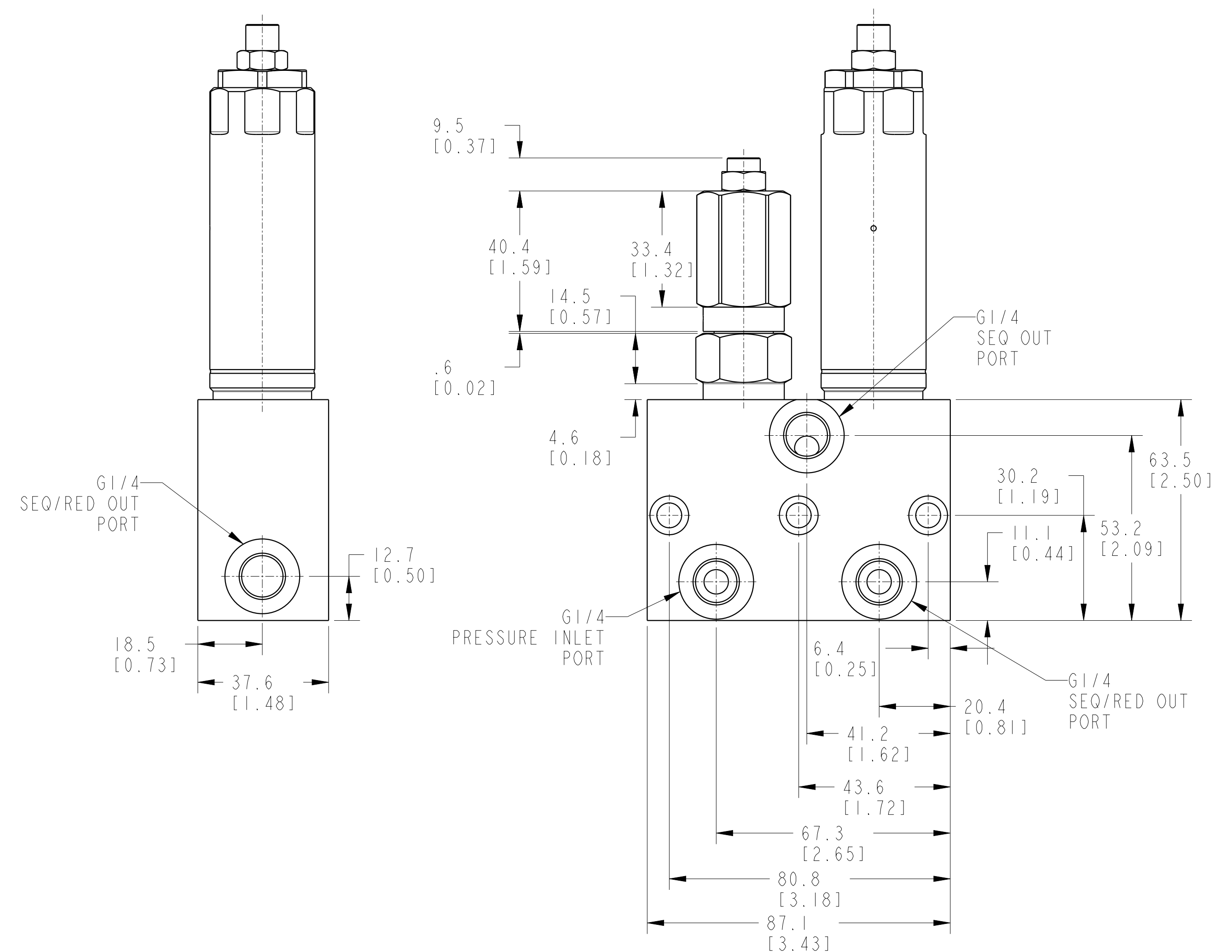
C

B

B

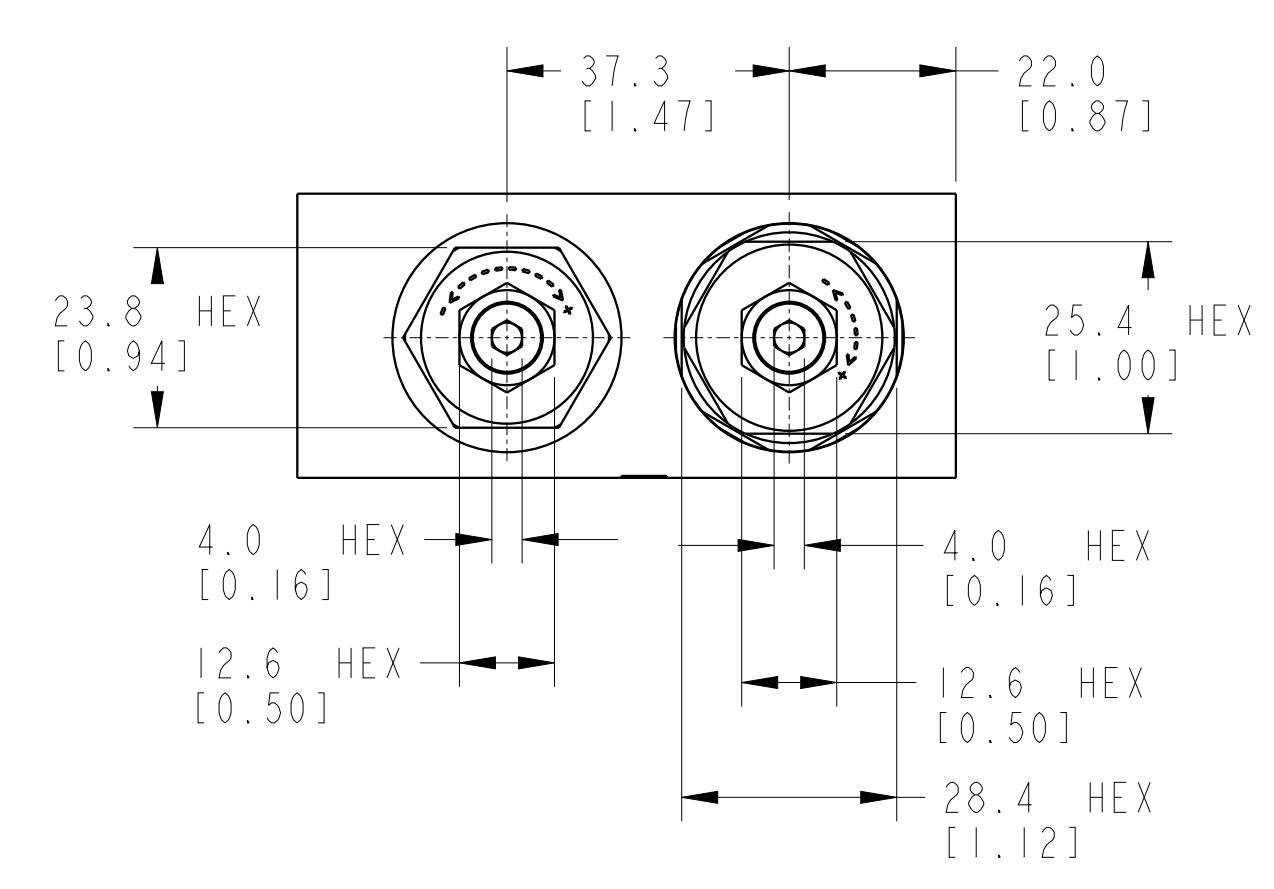
A

A



ILCML7081801 REV B ECN 4534

*M8 PORTS are counterbored for o-rings that are used in manifold mounting applications



CAD CONTROL DRAWING



B	4534	RELEASE	ALS	10/5/21	L7081801	B	VLV,LP SEQ-LP PRV, 7MPA
REV	IN ACCORDANCE WITH ECN	EFFECTIVE DATE	REVISED BY	DATE	REFERENCE MODEL	REF REV	*****
DRW BY:	DLG	DRAWING STATUS: Released			TOLERANCES DO NOT APPLY	UNITS	SIZE
DATE:	6/9/14	PRODUCTION APPROVED FOR RELEASED STATUS ONLY			DIMENSIONS ARE NOMINAL	mm (inch)	D
							ILCML7081801
							REV B