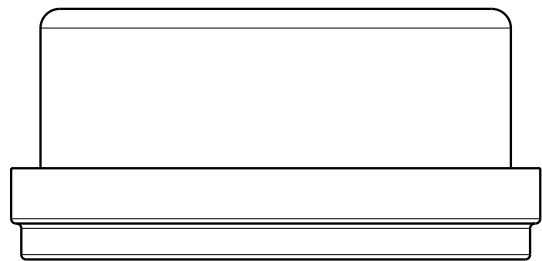


ILCML7221200 REV A ECN 2553



CAD CONTROL DRAWING			
		VEKTEK, INC. 1334 E. SIXTH AVE. P.O. BOX 625 EMPORIA, KS. 66801 U.S.A.	

A	2553	RELEASE	ALUTHI	7-19-13	L7221200	A	Gauge, Press, Hydr, 1500PSI, LBM, BSPP1/4, 2-1/2"
REV	IN ACCORDANCE WITH ECN	EFFECTIVE DATE	REVISED BY	DATE	REFERENCE MODEL	REF REV	
DRW BY:	ALUTHI	DRAWING STATUS: Released			TOLERANCES DO NOT APPLY	UNITS	SIZE
DATE:	4-5-13	PRODUCTION APPROVED FOR RELEASED STATUS ONLY			DIMENSIONS ARE NOMINAL	mm [inch]	B
							ILCML7221200
							REV A

FORM FEG036, Rev. A

SHEET 1 OF 1