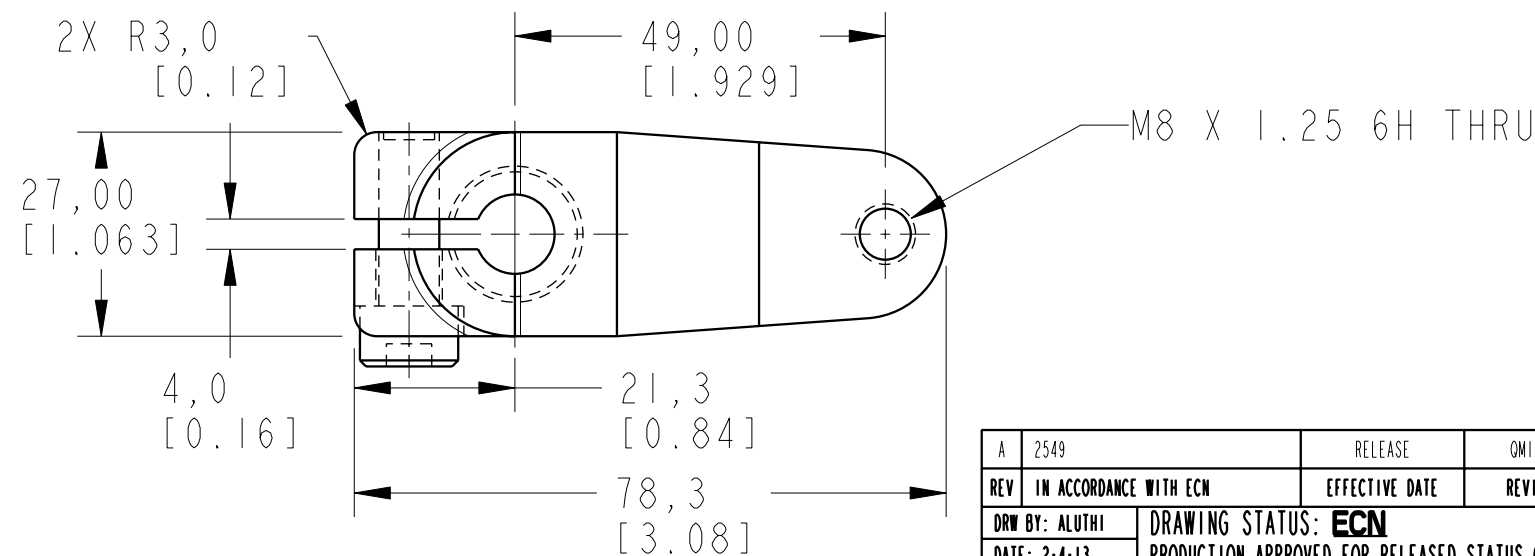
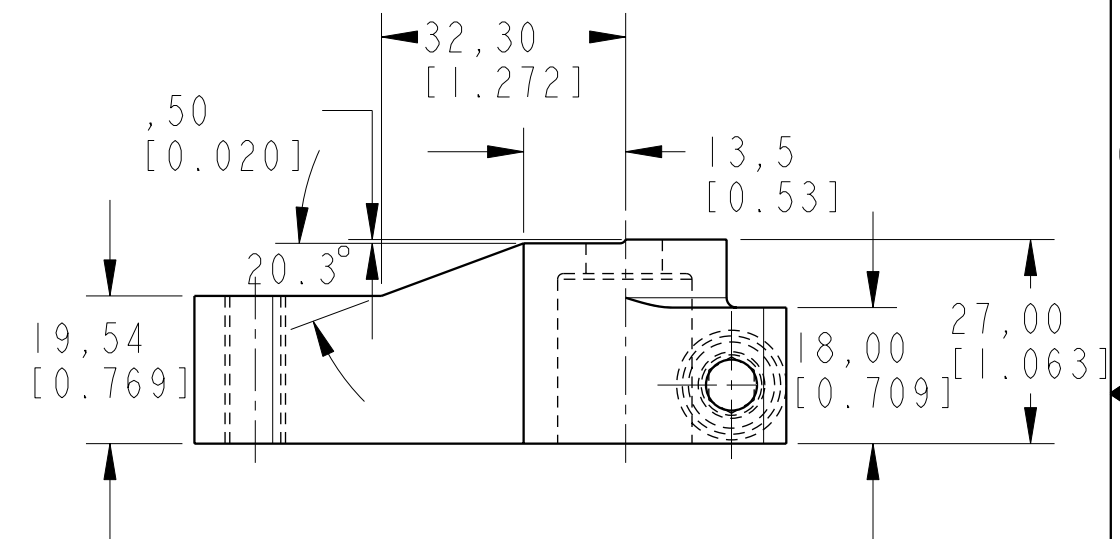
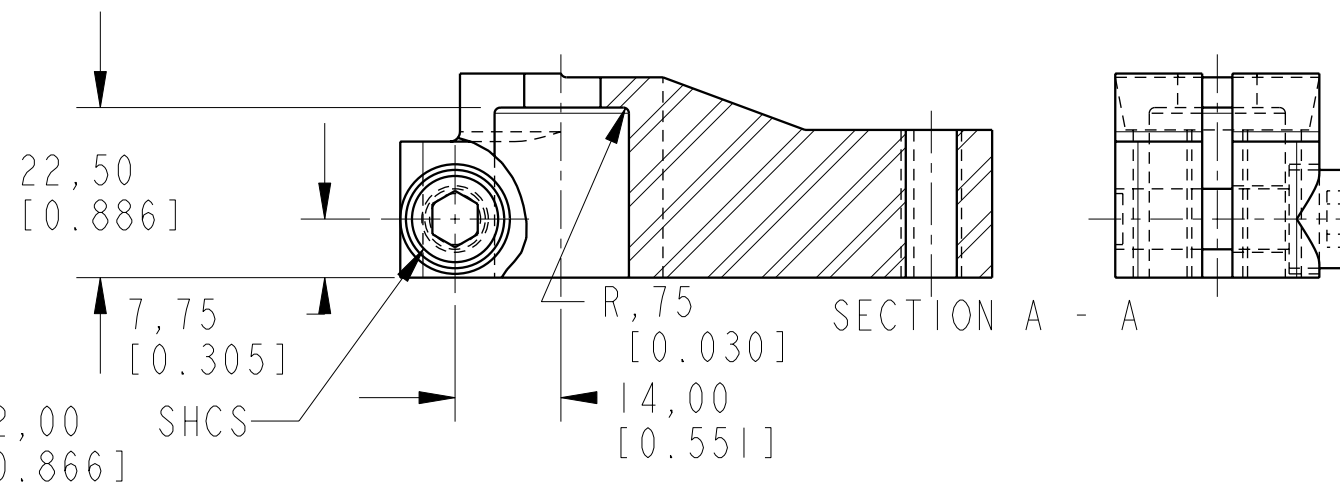
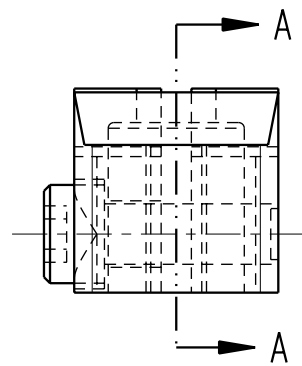


ILCML9143201 REV A ECN 2549



CAD CONTROL DRAWING



VEKTEK, INC.
 1334 E. SIXTH AVE. P.O. BOX 625
 EMPORIA, KS. 66801 U.S.A.

A	2549	RELEASE	OMITCHELL	6-3-13	L9143201	A	ARM, SC, 7MPa, 32B, SHORT, THD
REV	IN ACCORDANCE WITH ECN	EFFECTIVE DATE	REVISED BY	DATE	REFERENCE MODEL	REF REV	*****
DRW BY: ALUTHI	DRAWING STATUS: ECN				TOLERANCES DO NOT APPLY	UNITS	SIZE
DATE: 2-4-13	PRODUCTION APPROVED FOR RELEASED STATUS ONLY				DIMENSIONS ARE NOMINAL	mm [inch]	B
					ILCML9143201		REV A

FORM FEG036, Rev. A

SHEET 1 OF 1