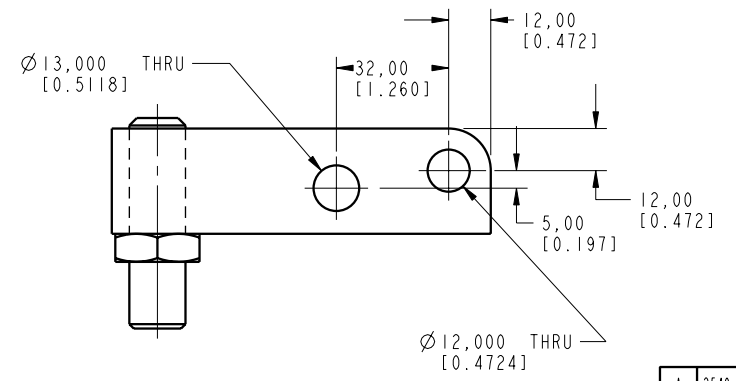
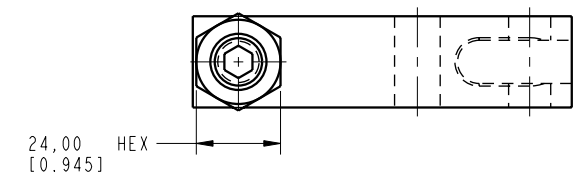
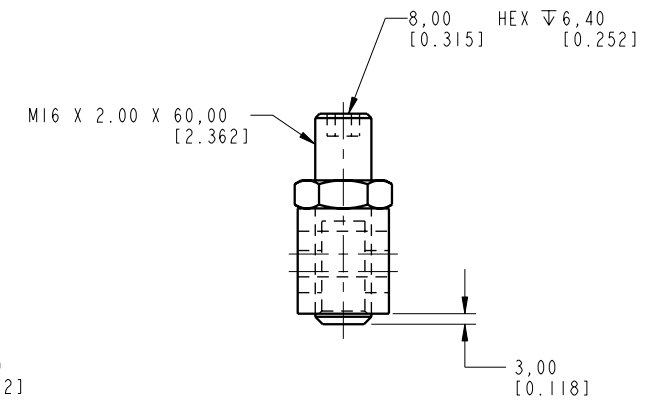
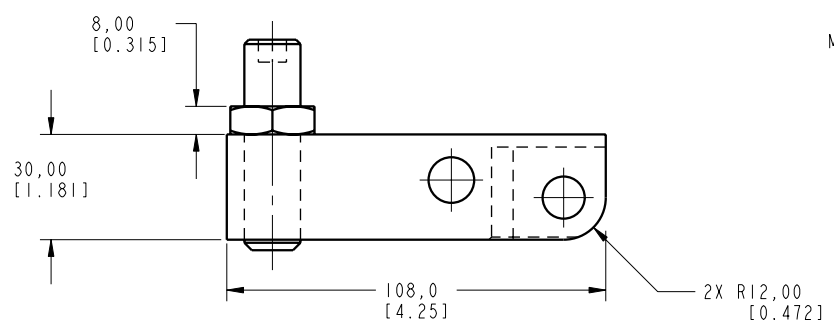
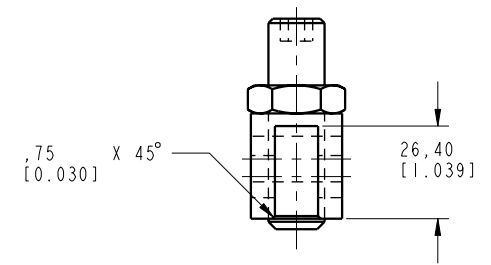


ILCML9166303 REV A ECN 2549



CAD CONTROL DRAWING



VEKTEK, INC.
1334 E. SIXTH AVE. P.O. BOX 625
EMPORIA, KS. 66801 U.S.A.

REV	A	2549	RELEASE	OMITCHELL	6-13-13	L9166303	A	LEVER, WS, LC, 7MPa, 63B
REV	IN ACCORDANCE WITH ECN		EFFECTIVE DATE	REVISED BY	DATE	REFERENCE MODEL	REF REV	*****
DRW BY:	ALUTH1		DRAWING STATUS: Released			TOLERANCES DO NOT APPLY	UNITS	SIZE
DATE:	3-1-13		PRODUCTION APPROVED FOR RELEASED STATUS ONLY			DIMENSIONS ARE NOMINAL	mm [inch]	D
							ILCML9166303	REV A

FORM FE036, Rev. B