

1

2

3

4

D

D

C

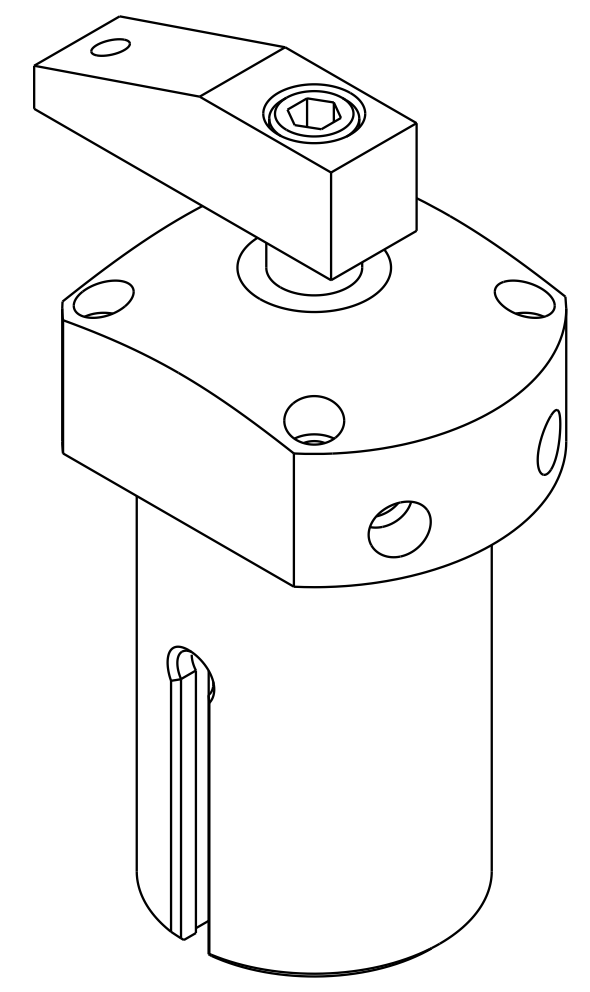
C

B

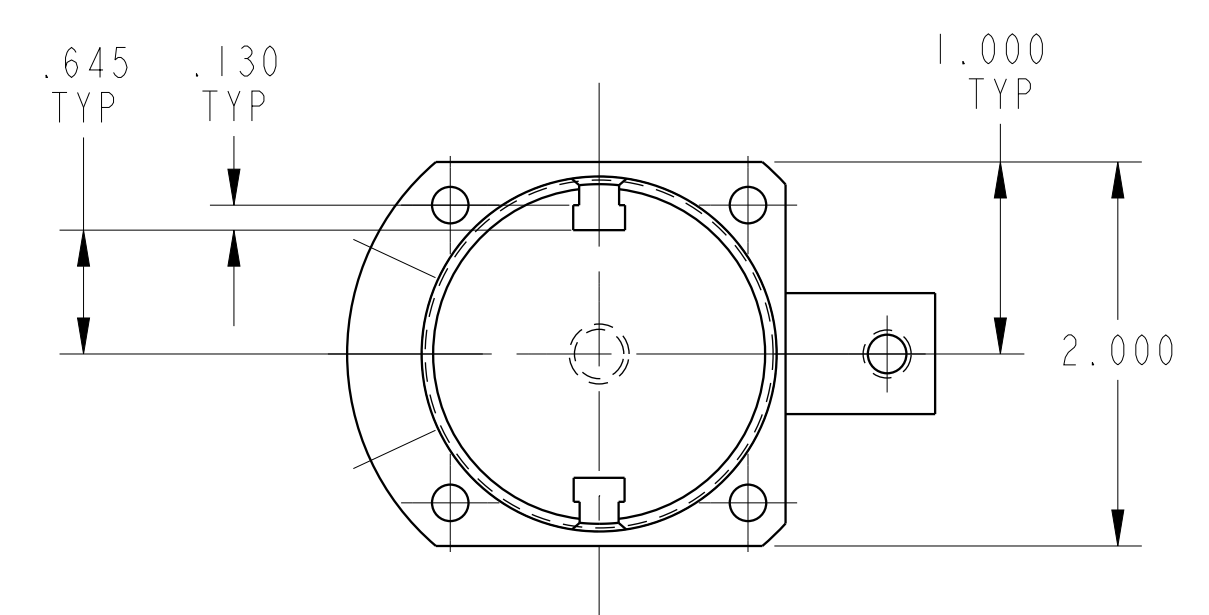
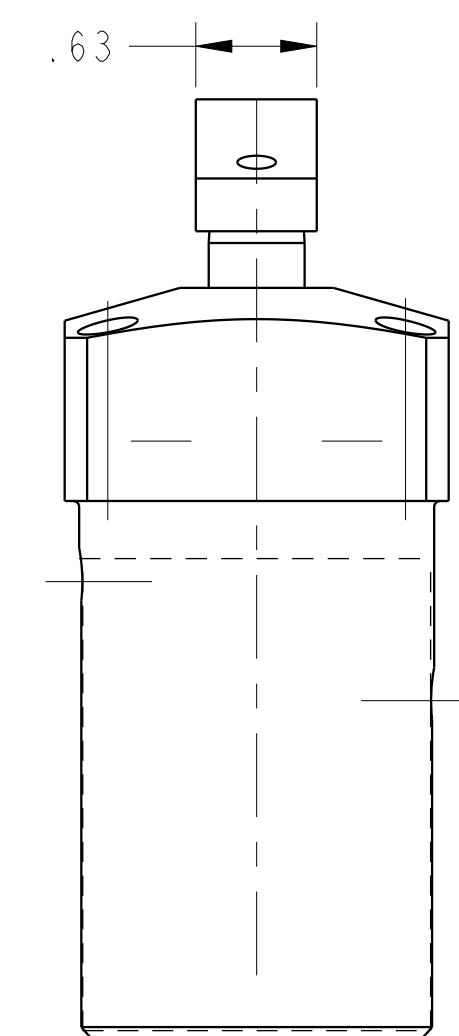
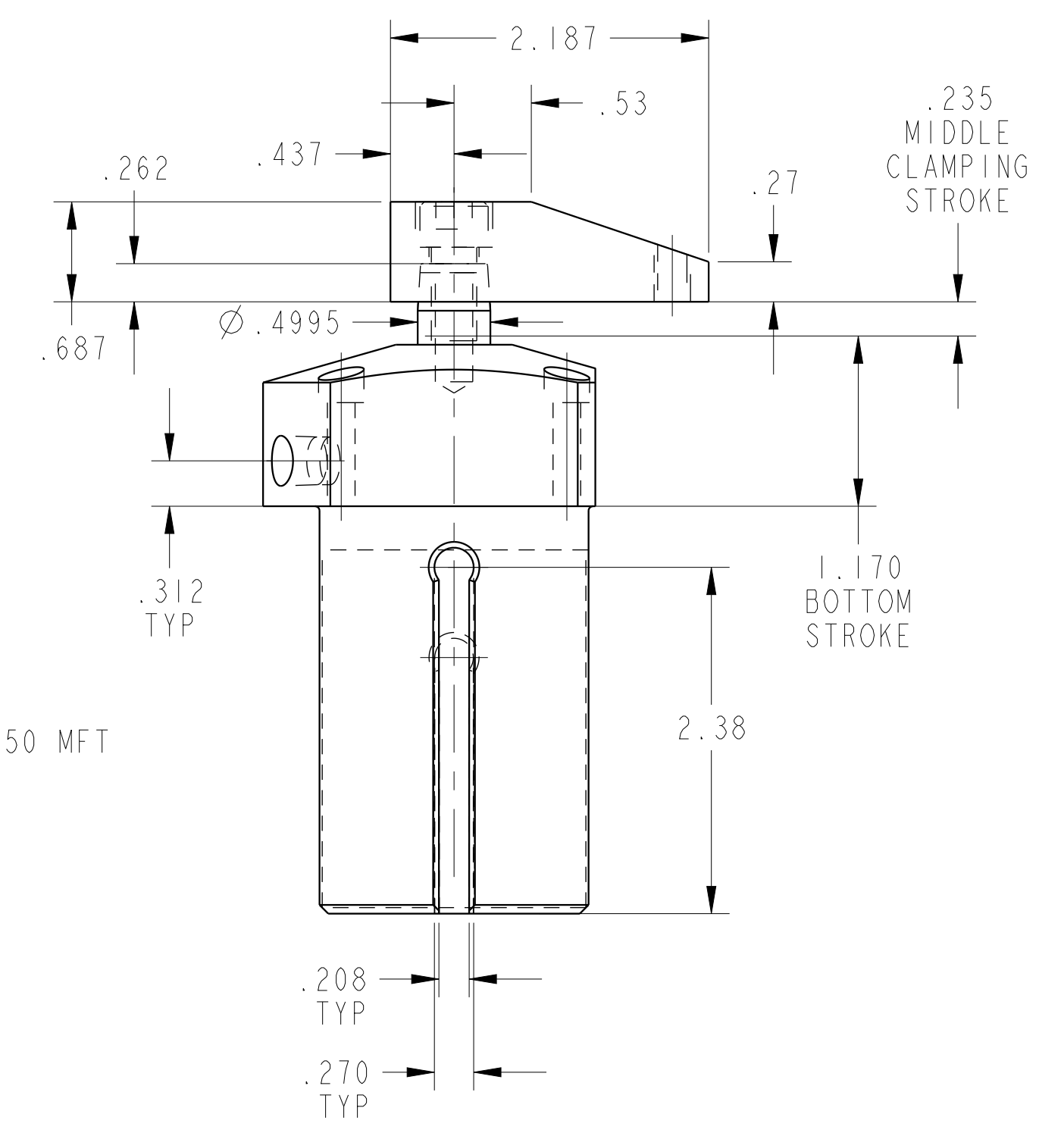
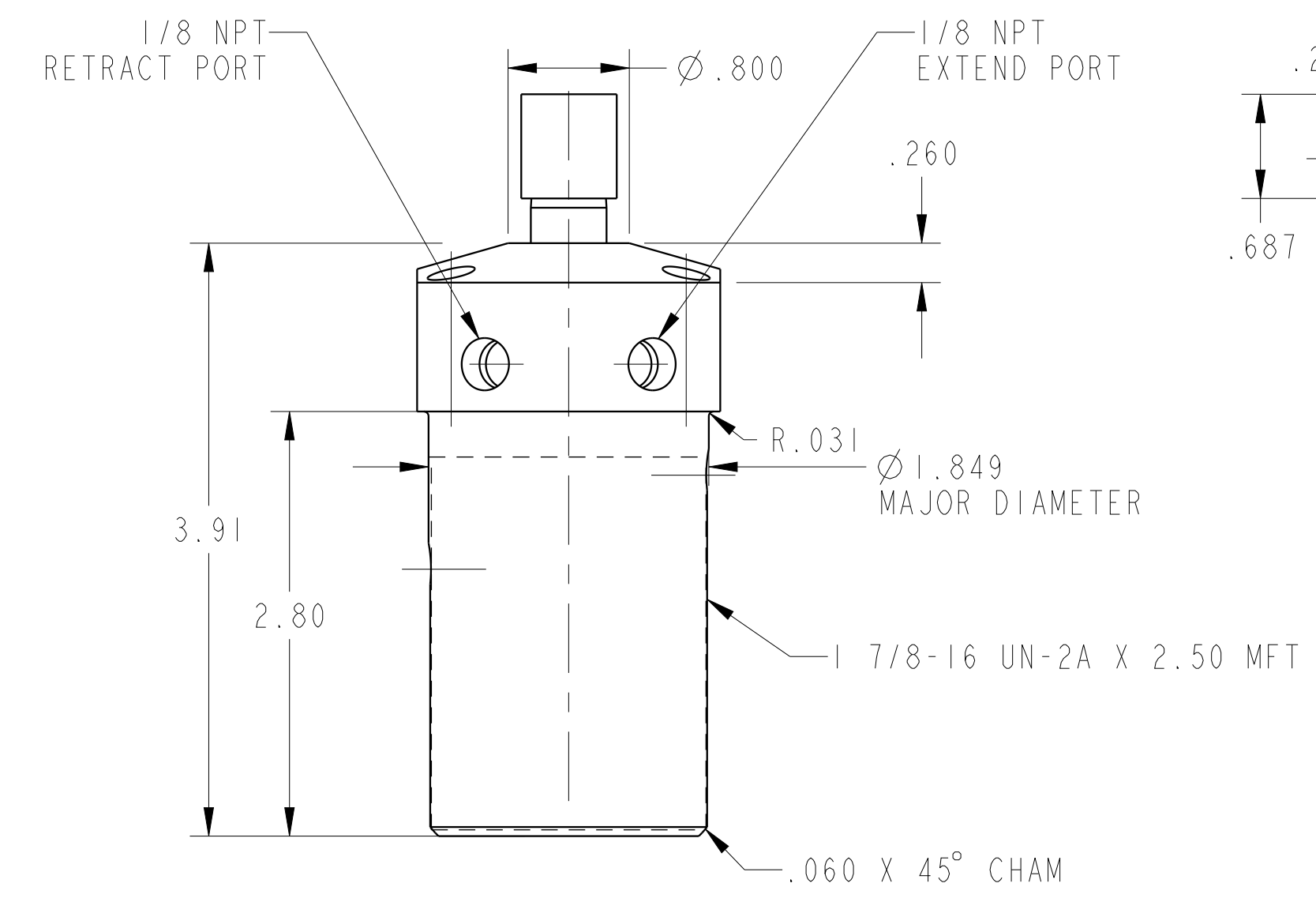
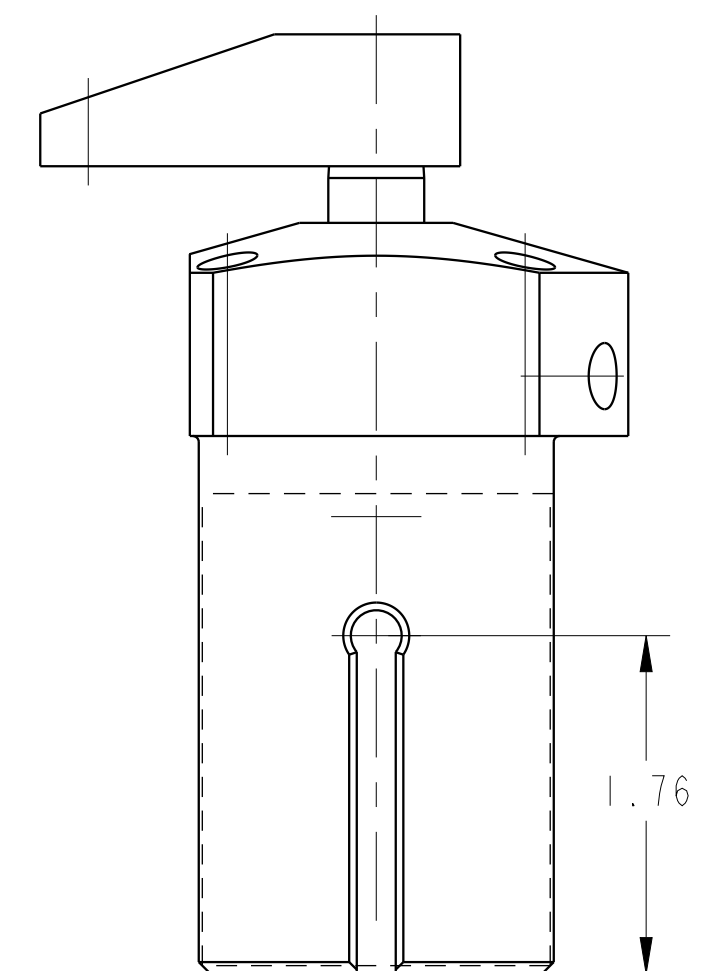
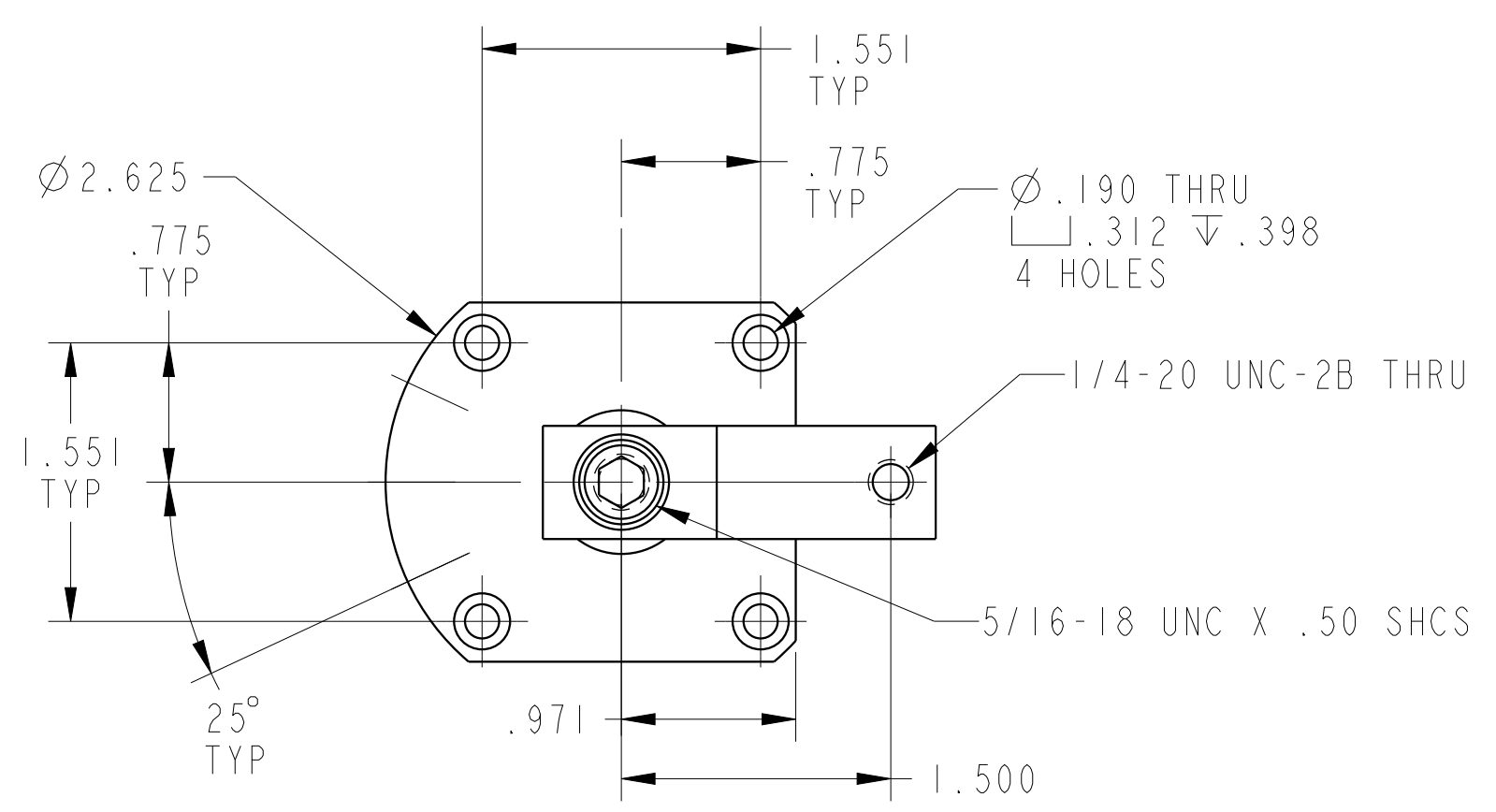
B

A

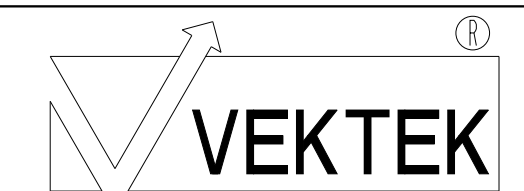
A



ILCP1511600 REV D ECN 5257



CAD CONTROL DRAWING



VEKTEK, INC.
 1334 E. SIXTH AVE. P.O. BOX 625
 EMPORIA, KS. 66801 U.S.A.

D	5257	RELEASE	RLK	3/5/24	P1511600	6	ASSY, SC, PNEU, TF, 1 1/8, LH
REV	IN ACCORDANCE WITH ECN	EFFECTIVE DATE	REVISED BY	DATE	REFERENCE MODEL	REF REV	
DRW BY:	DRAWING STATUS: Released				TOLERANCES DO NOT APPLY		SIZE
DATE:	PRODUCTION APPROVED FOR RELEASED STATUS ONLY				DIMENSIONS ARE NOMINAL		D

ILCP1511600 REV D

2

3

4

SHEET 1 OF 1