

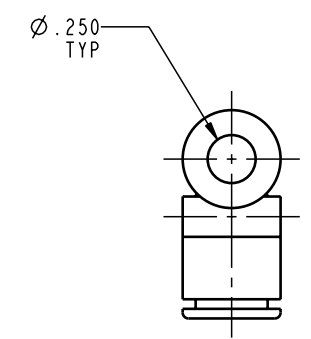
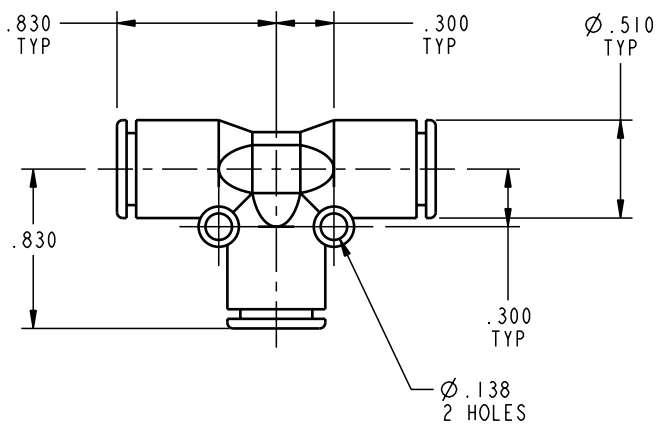


ILCP3002200 REV B ECN1588

CAD CONTROL DRAWING		 VEKTEK, INC. 1334 E. SIXTH AVE. P.O. BOX 625 EMPORIA, KS. 66801 U.S.A.	
		TEE, UNION, 1/4 TBG	
B	1588	RELEASE	K. ROEMER
REV	IN ACCORDANCE WITH ECN	EFFECTIVE DATE	REVISED BY
DATE: 11-02-06		11-02-06	
DRAWING STATUS: Released PRODUCTION APPROVED FOR RELEASED STATUS ONLY		P3002200 REFERENCE MODEL	A REF REV
TOLERANCES DO NOT APPLY DIMENSIONS ARE NOMINAL		SIZE B	ILCP3002200 FORM FEG036, Rev. A



B	1588	RELEASE	K. ROEMER	11-02-06
REV	IN ACCORDANCE WITH ECN	EFFECTIVE DATE	REVISED BY	DATE
DATE: 11-02-06				