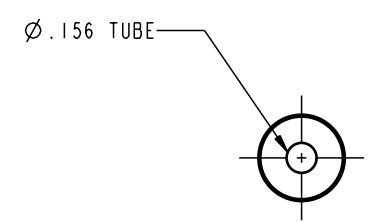
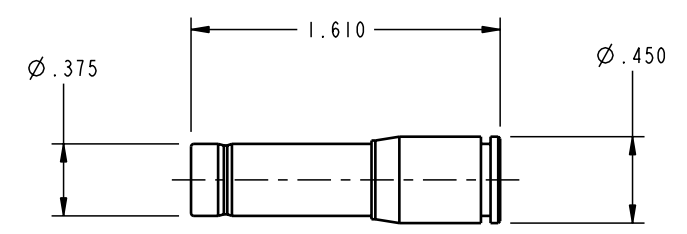
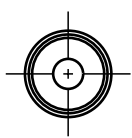


1LCP3013801 REV A ECN1588



**CAD CONTROL
DRAWING**



VEKTEK, INC.
1334 E. SIXTH AVE. P.O. BOX 625
EMPORIA, KS. 66801 U.S.A.



A	1588	RELEASE	K. ROEMER	11-02-06	P3013801	A	REDUCER, 5/32 - 3/8 TBG
REV	IN ACCORDANCE WITH ECN	EFFECTIVE DATE	REVISED BY	DATE	REFERENCE MODEL	REF REV	*****
DRW BY:	K. ROEMER	DRAWING STATUS: Released				TOLERANCES DO NOT APPLY DIMENSIONS ARE NOMINAL	
DATE:	11-02-06	PRODUCTION APPROVED FOR RELEASED STATUS ONLY				SIZE B	1LCP3013801 REV A

FORM FEG036, Rev. A

SHEET 1 OF 1