

1

2

3

4

D

D

C

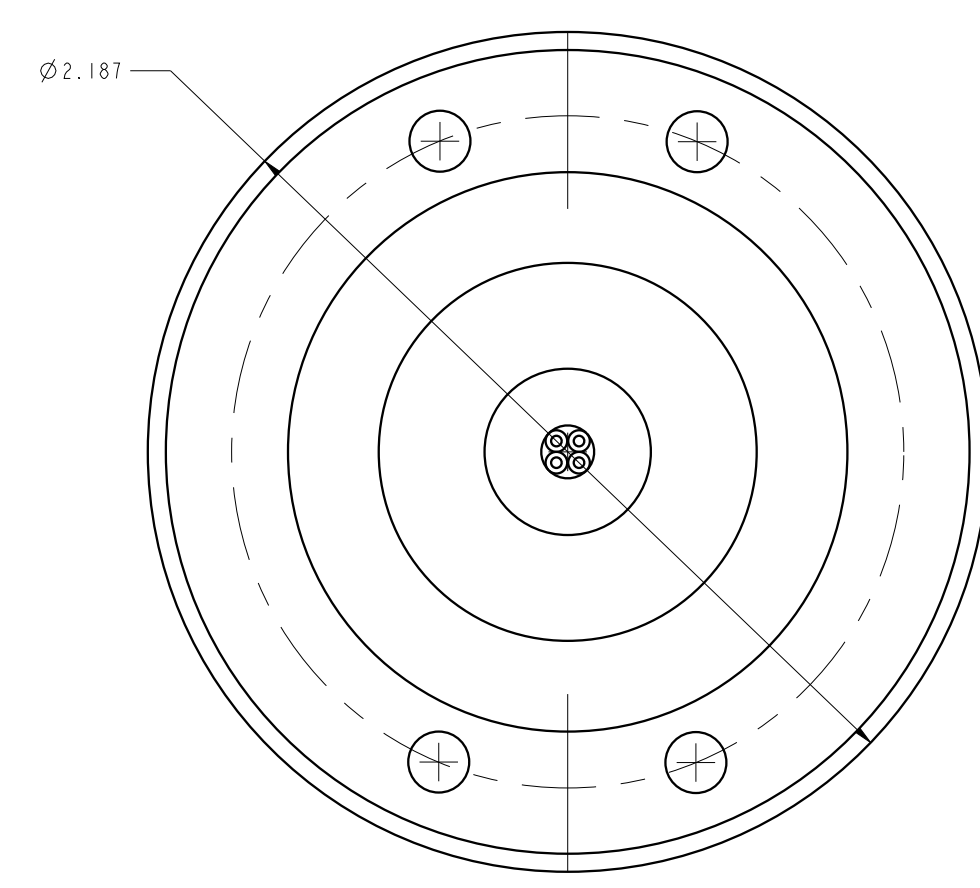
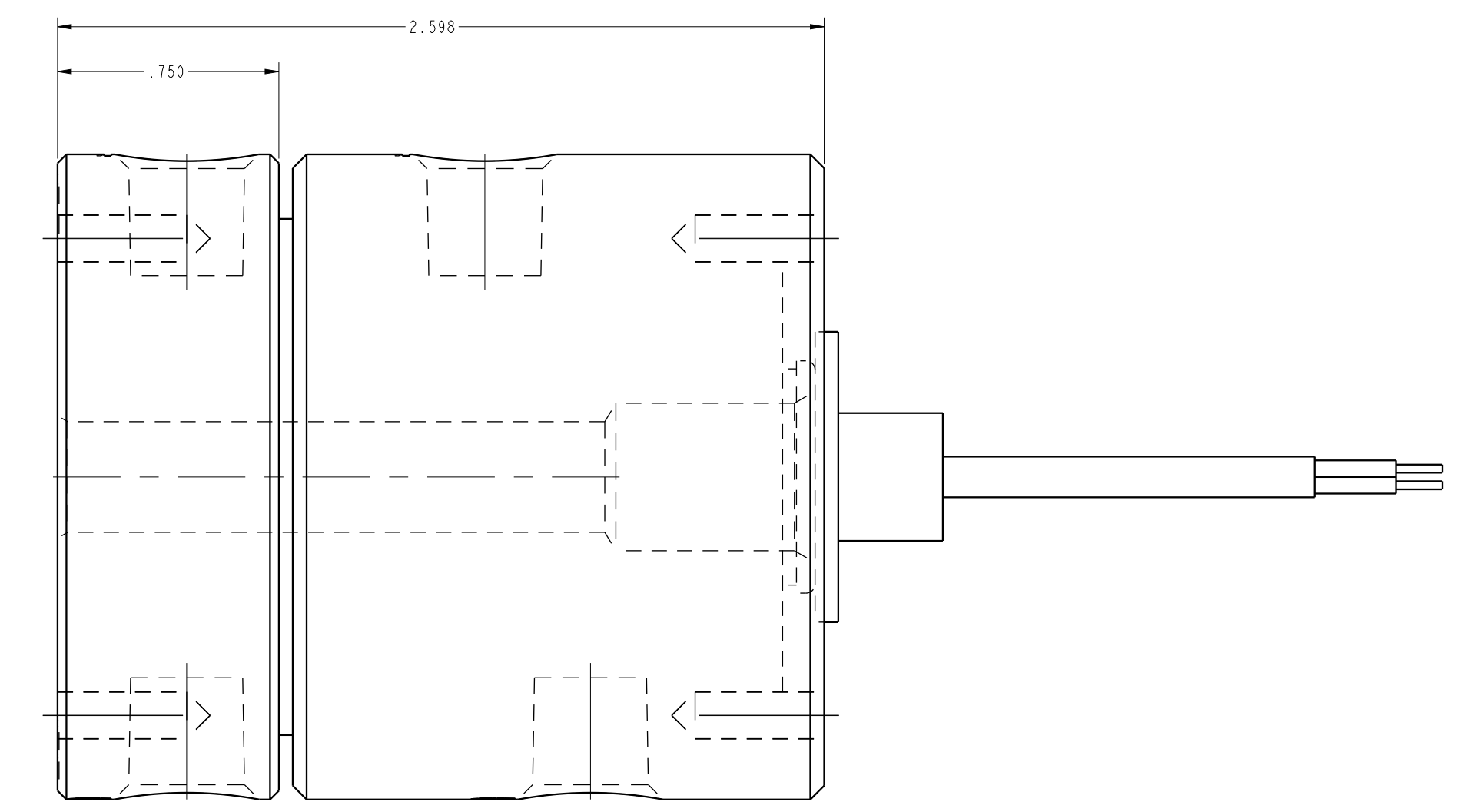
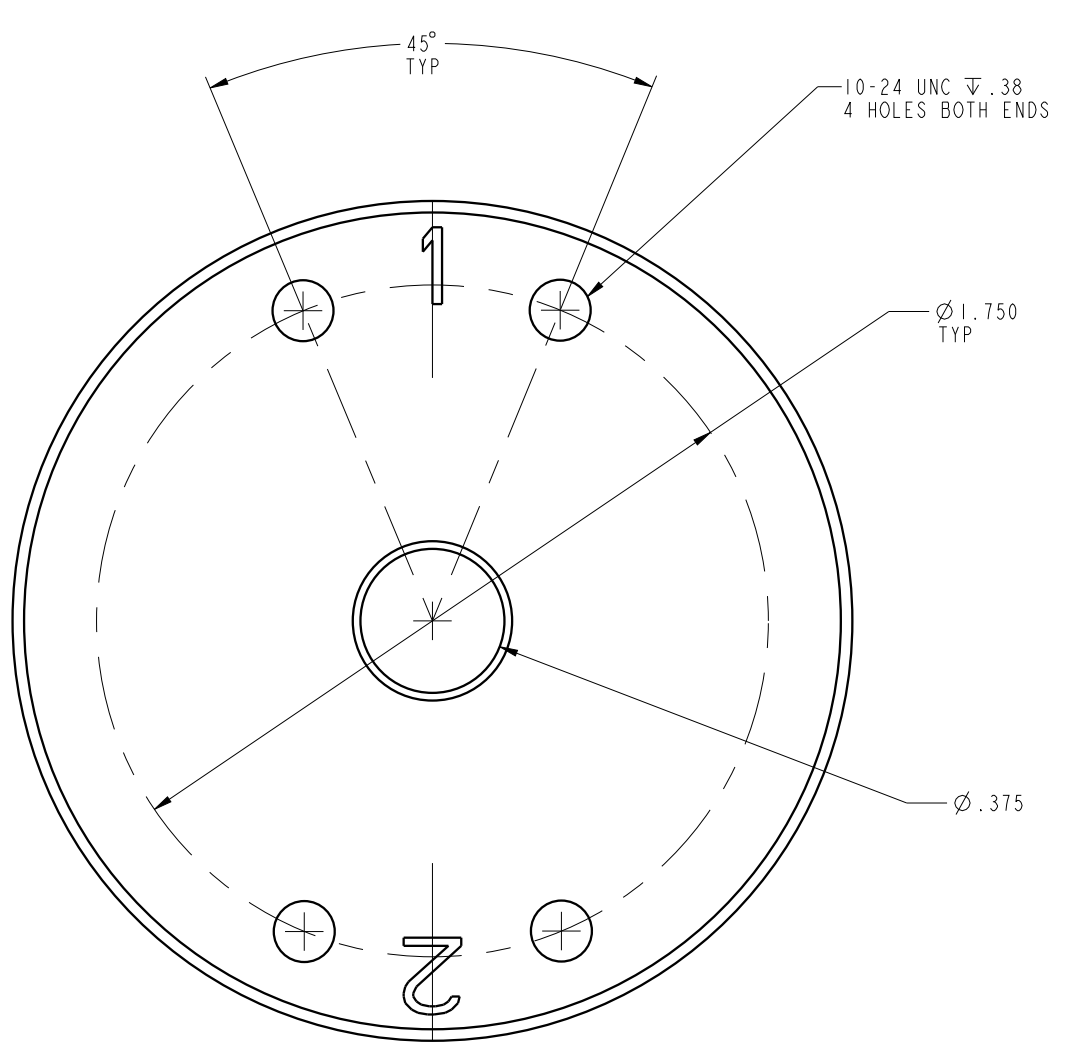
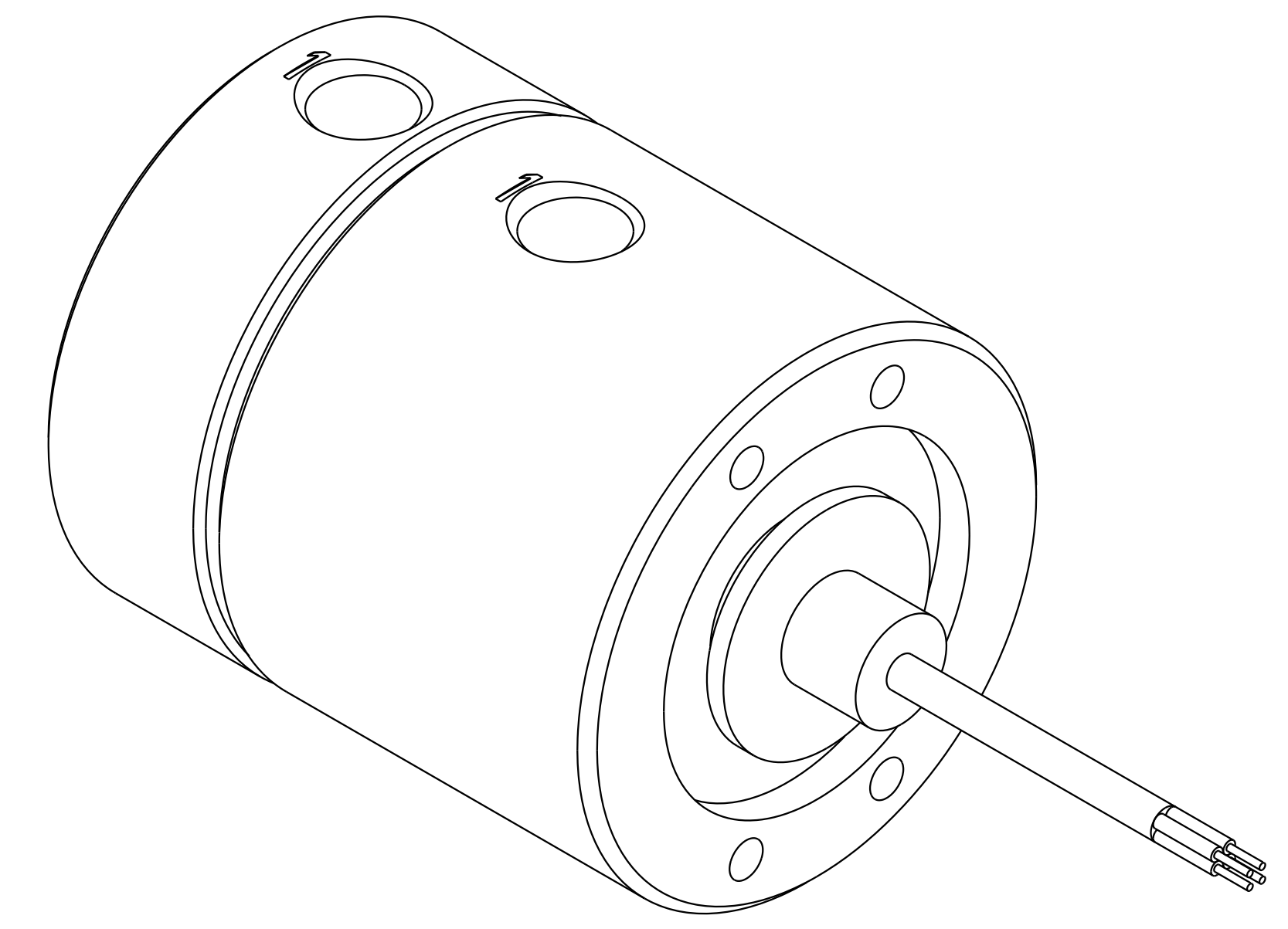
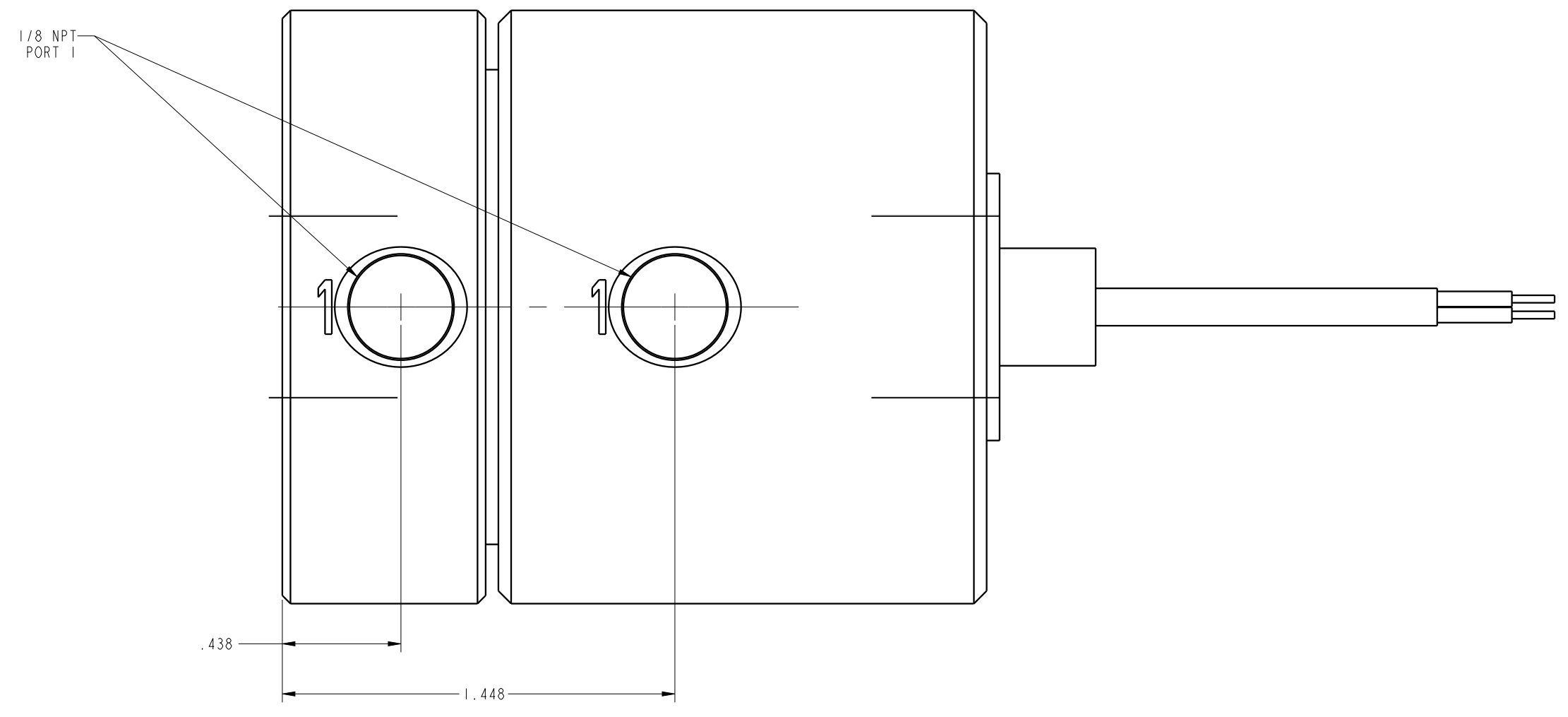
C

B

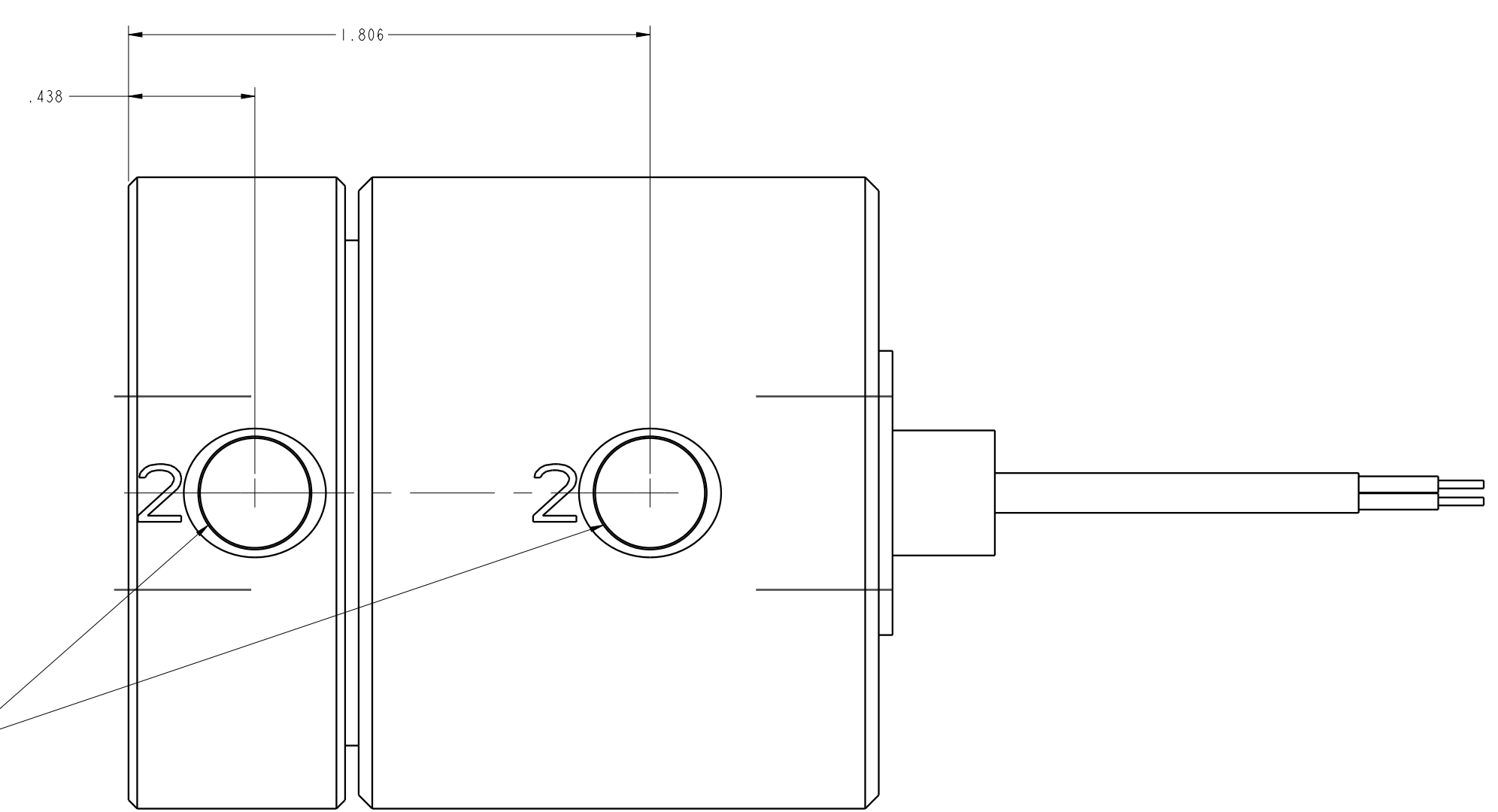
B

A

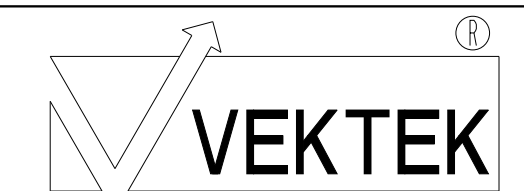
A



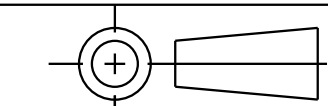
ILCP3224201ES12A REV B ECN5033



CAD CONTROL DRAWING



VEKTEK, INC.  
1334 E. SIXTH AVE. P.O. BOX 625  
EMPORIA, KS. 66801 U.S.A.



B	5033	RELEASE	JDW	02/17/23	P3224201ES12A	C	RU, 2 PASSAGE, 12 CIRCUIT
REV	IN ACCORDANCE WITH ECN	EFFECTIVE DATE	REVISED BY	DATE	REFERENCE MODEL	REF REV	
DRW BY:	K. ROEMER	DRAWING STATUS: Released			TOLERANCES DO NOT APPLY		SIZE
DATE:	10-17-06	PRODUCTION APPROVED FOR RELEASED STATUS ONLY			DIMENSIONS ARE NOMINAL		D

ILCP3224201ES12A  
FORM FEG036, Rev. B