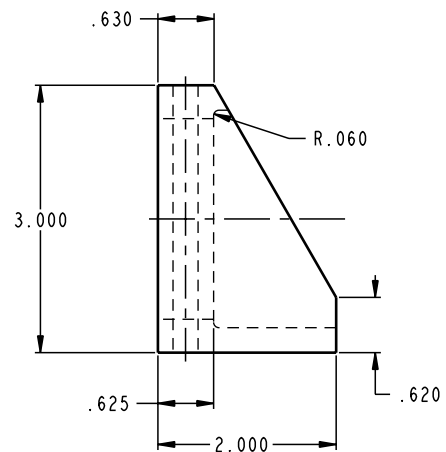
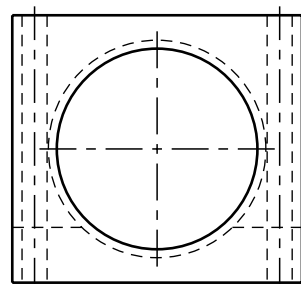
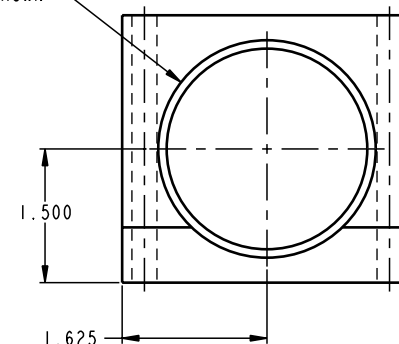


ILCP6403230 REV A ECN 1600



2 5/16-16 UN-2B
Ø 2.440 TO DEPTH SHOWN



CAD CONTROL
DRAWING



VEKTEK, INC.
1334 E. SIXTH AVE. P.O. BOX 625
EMPORIA, KS. 66801 U.S.A.

A	1600	RELEASE	K. ROEMER	11-16-06	P6403230	A	BRACKET, MOUNTING, 2 5/16-16
REV	IN ACCORDANCE WITH ECN	EFFECTIVE DATE	REVISED BY	DATE	REFERENCE MODEL	REF REV	''''
DRW BY:	K. ROEMER	DRAWING STATUS: Released			TOLERANCES DO NOT APPLY		SIZE
DATE:	11-16-06	PRODUCTION APPROVED FOR RELEASED STATUS ONLY			DIMENSIONS ARE NOMINAL		D ILCP6403230 REV A

FORM FEG036, Rev. A

SHEET 1 OF 1