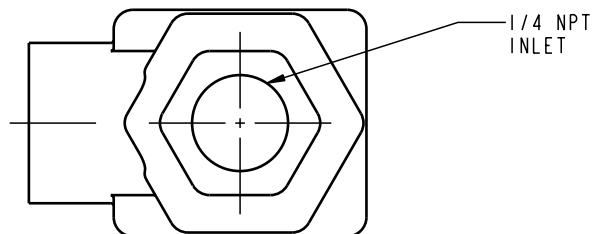
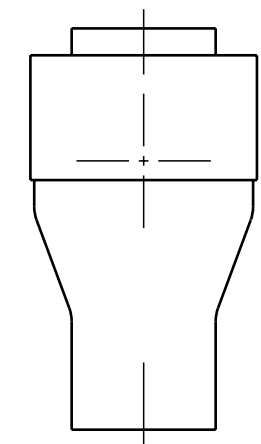
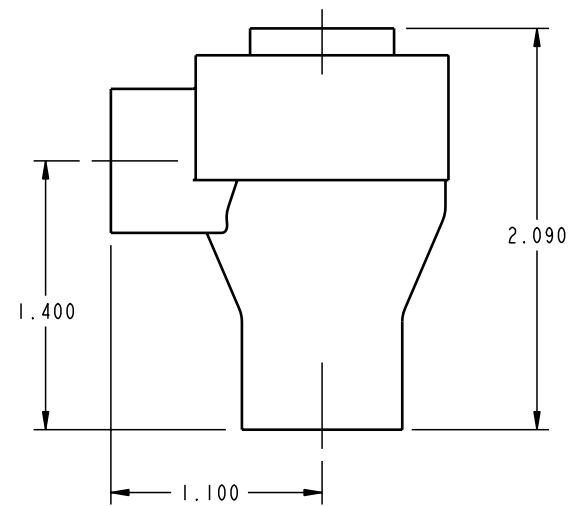
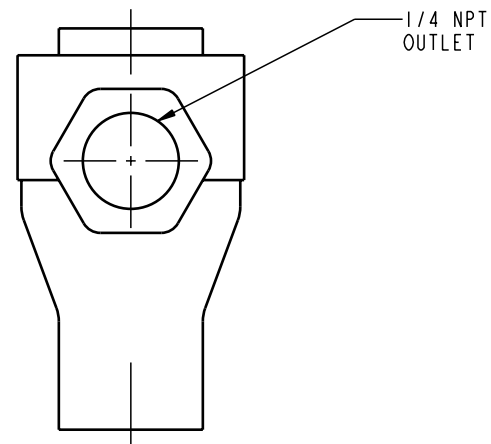


ILCP7001001 REV B ECN1588



**CAD CONTROL  
DRAWING**



VEKTEK, INC.  
1334 E. SIXTH AVE. P.O. BOX 625  
EMPORIA, KS. 66801 U.S.A.

B	1588	RELEASE	K. ROEMER	11-02-06	P7001001	A	VALVE, EXHAUST, QUICK, 1/4 NPT
REV	IN ACCORDANCE WITH ECN	EFFECTIVE DATE	REVISED BY	DATE	REFERENCE MODEL	REF REV	*****
DRW BY:	K. ROEMER	<b>DRAWING STATUS: Released</b>			TOLERANCES DO NOT APPLY DIMENSIONS ARE NOMINAL		SIZE B
DATE:	11-02-06	PRODUCTION APPROVED FOR RELEASED STATUS ONLY			ILCP7001001		REV B
							FORM FEG036, Rev. A

SHEET 1 OF 1