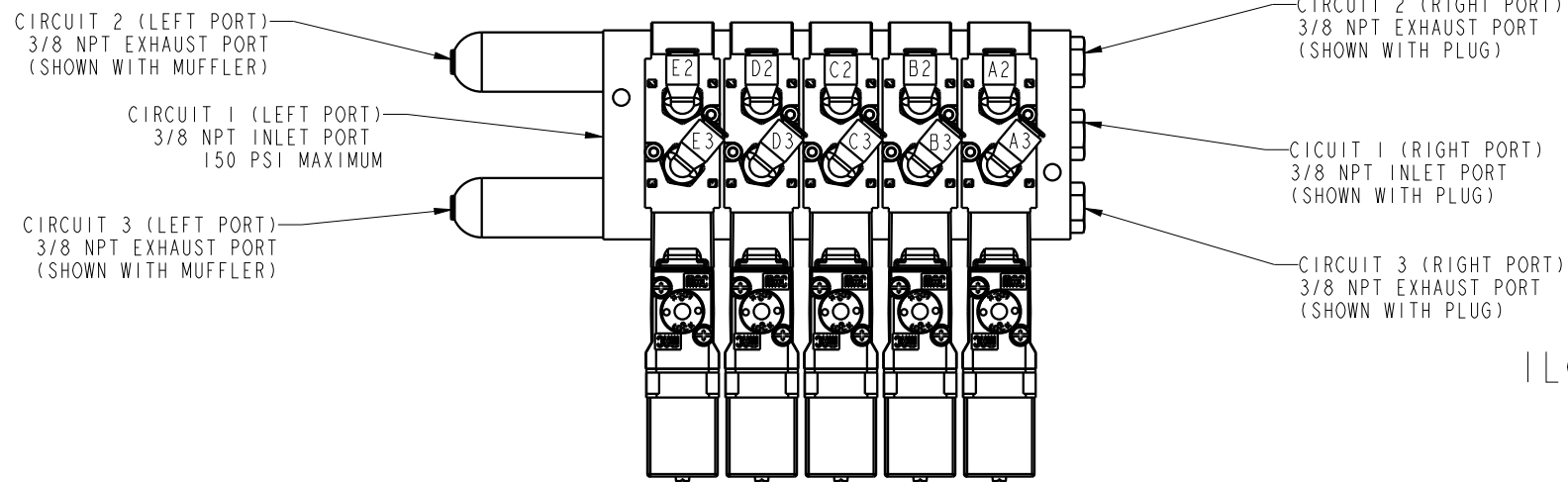
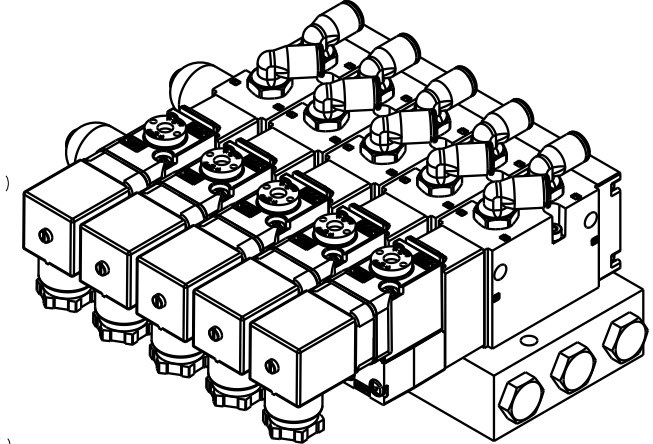
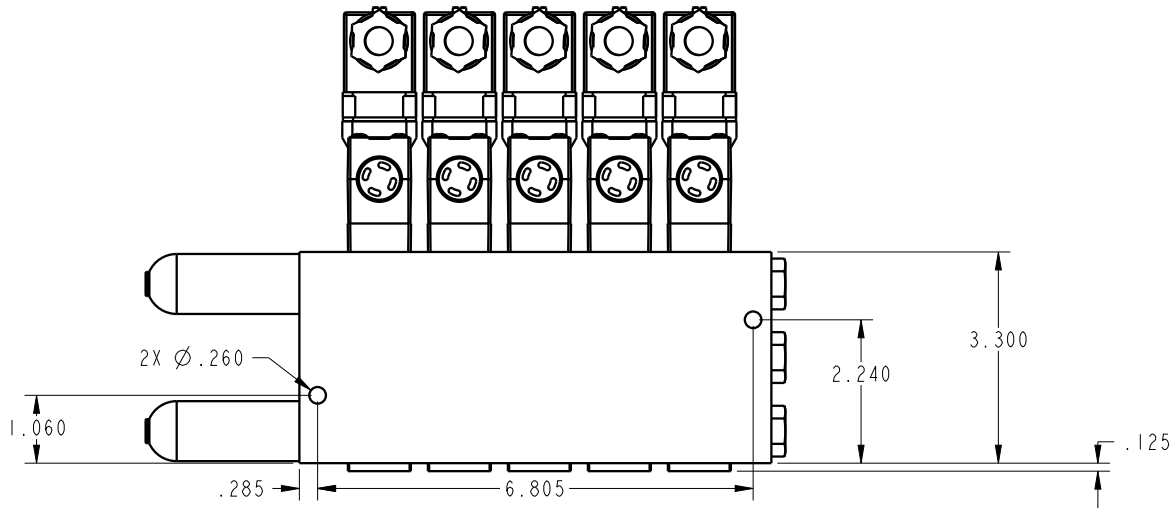
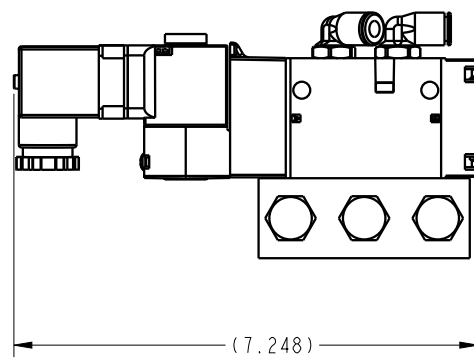
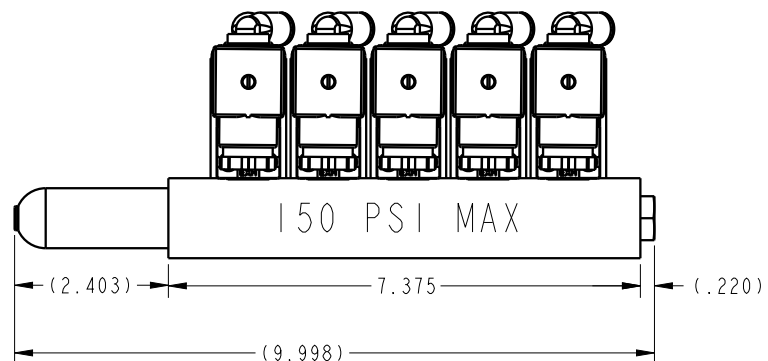
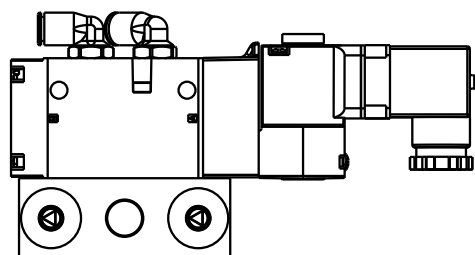


PORT DESCRIPTIONS		
PORT#	TYPE	DESCRIPTION
ALL VALVES PORT 2	1/4 NPT WITH 1/4 HOSE ADAPTER	PRESSURIZED WHEN SOLENOID RECIEVES 24V SIGNAL EXTENDING PISTON
ALL VALVES PORT 3	1/4 NPT WITH 1/4 HOSE ADAPTER	PRESSURIZED WHEN SOLENOID POWER IS DISCONNECTED RETRACTING PISTON

NOTE: THIS ASSEMBLY COMES WITH TWO 3/8NPT MUFFLERS & THREE 3/8 NPT PLUGS. MUFFLERS CAN BE USED ON EITHER THE LEFT OR RIGHT HAND PORTS, BUT THERE MUST BE AT LEAST ONE MUFFLER ON BOTH CIRCUIT 2&3. AIR INLET CAN ALSO BE ON EITHER SIDE. ALL UNUSED PORTS SHOULD BE PLUGGED!



ILCP7101215 REV A ECN#5120



RECOMENDED VALVE USES AND SETUP		
VALVE OPTION	ALL VALVES PORT 2	ALL VALVES PORT 3
AUTOCOUPLER SLIDE	TO PORT P7 ON SLIDE (EXTEND)	TO PORT P6 ON SLIDE (RETRACT)
AUTOCOUPLER/PALLET RECIEVER LOCK	TO PORT P3 (LOCKS AUTOCOUPLER)	TO PORT P4 (UNLOCKS AUTOCOUPLER)
AIR BLOWOFF	TO PORT P5 ON AUTOCOUPLER (AIR BLOWOFF ON)	NOT USED
AUTOCOUPLER AIR THROUGH PORT 1	TO PORT P1 ON AUTOCOUPLER	NOT USED
AUTOCOUPLER AIR THROUGH PORT 2	TO PORT P2 ON AUTOCOUPLER	NOT USED

CAD CONTROL DRAWING	VEKTEK® VEKTEK, INC. 1334 E. SIXTH AVE. P.O. BOX 625 EMPORIA, KS. 66801 U.S.A.																										
	<table border="1"> <tr> <td>A</td> <td>5120</td> <td>RELEASE</td> <td>BDC</td> <td>7/10/23</td> </tr> <tr> <td>REV</td> <td>IN ACCORDANCE WITH ECN</td> <td>EFFECTIVE DATE</td> <td>REVISED BY</td> <td>DATE</td> </tr> <tr> <td>DRW BY: BDC</td> <td colspan="2">DRAWING STATUS: Design</td> <td colspan="2">TOLERANCES DO NOT APPLY DIMENSIONS ARE NOMINAL</td> </tr> <tr> <td>DATE: 7/10/23</td> <td colspan="2">PRODUCTION APPROVED FOR RELEASED STATUS ONLY</td> <td>SIZE B</td> <td>ILCP7101215 REV A</td> </tr> </table>	A	5120	RELEASE	BDC	7/10/23	REV	IN ACCORDANCE WITH ECN	EFFECTIVE DATE	REVISED BY	DATE	DRW BY: BDC	DRAWING STATUS: Design		TOLERANCES DO NOT APPLY DIMENSIONS ARE NOMINAL		DATE: 7/10/23	PRODUCTION APPROVED FOR RELEASED STATUS ONLY		SIZE B	ILCP7101215 REV A	<table border="1"> <tr> <td>P7101215</td> <td>A</td> <td>ILC, VALVE, PNEU, 5/2, 24V, SGL SOL, 5 BANK</td> </tr> <tr> <td>REFERENCE MODEL</td> <td>REF REV</td> <td></td> </tr> </table>	P7101215	A	ILC, VALVE, PNEU, 5/2, 24V, SGL SOL, 5 BANK	REFERENCE MODEL	REF REV
A	5120	RELEASE	BDC	7/10/23																							
REV	IN ACCORDANCE WITH ECN	EFFECTIVE DATE	REVISED BY	DATE																							
DRW BY: BDC	DRAWING STATUS: Design		TOLERANCES DO NOT APPLY DIMENSIONS ARE NOMINAL																								
DATE: 7/10/23	PRODUCTION APPROVED FOR RELEASED STATUS ONLY		SIZE B	ILCP7101215 REV A																							
P7101215	A	ILC, VALVE, PNEU, 5/2, 24V, SGL SOL, 5 BANK																									
REFERENCE MODEL	REF REV																										
FORM FEG036, Rev. B		SHEET 1 OF 1																									