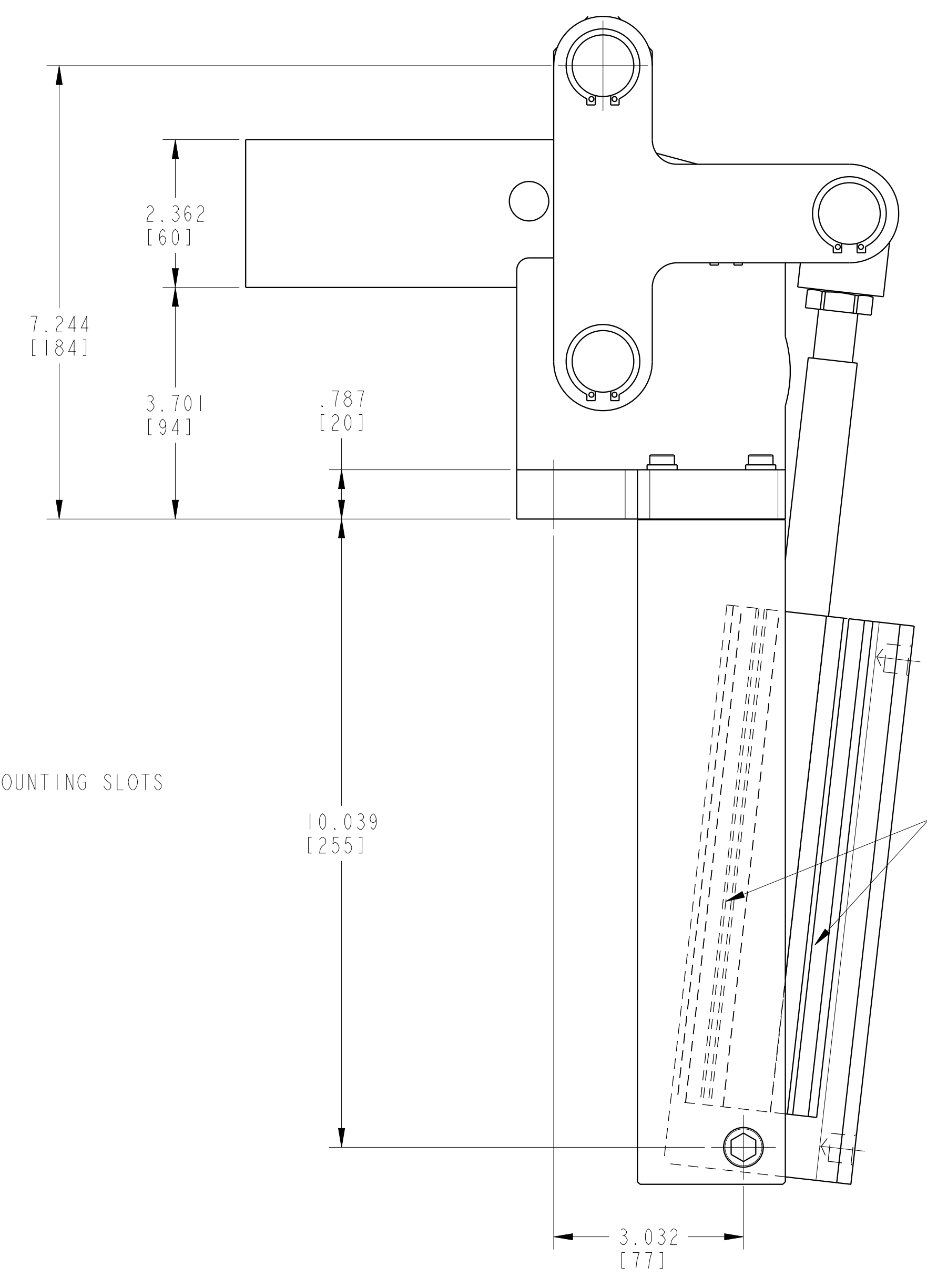
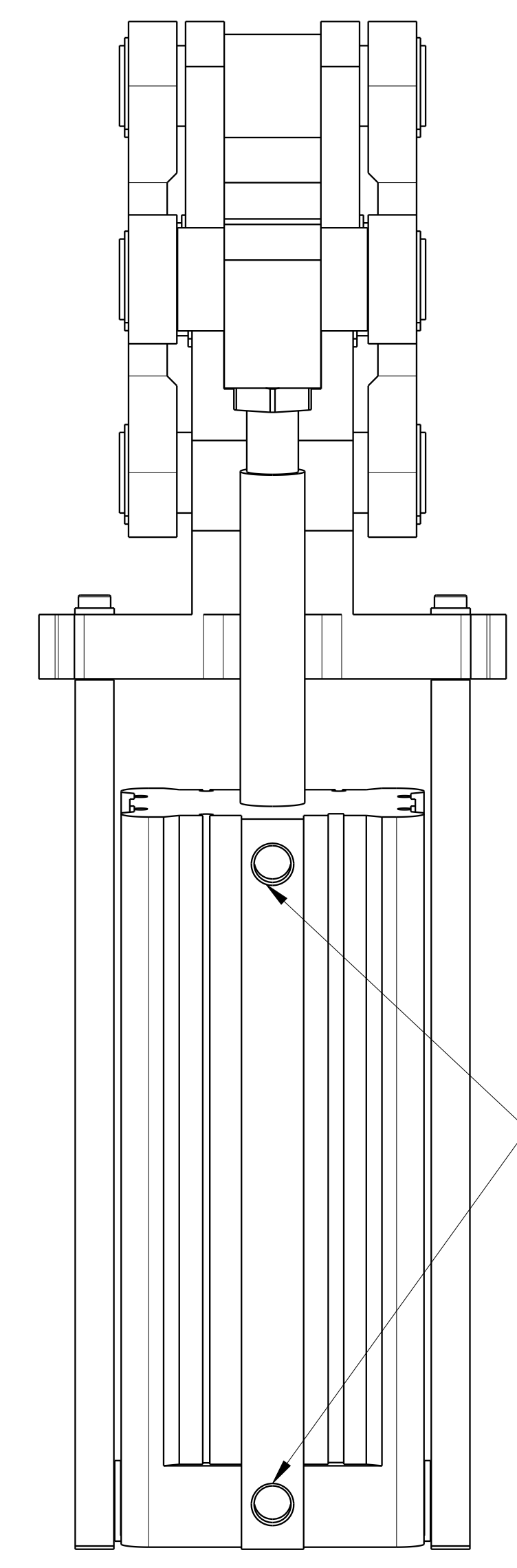


PROXIMITY SWITCH MOUNTING SLOTS  
TOP AND BOTTOM



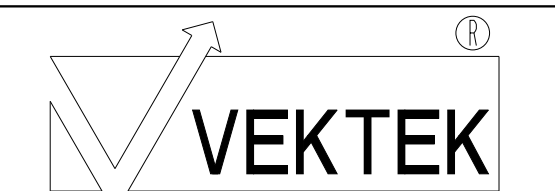
PROXIMITY SWITCH MOUNTING SLOTS  
ON BOTH SIDES OF CYLINDER



G 1/4 PORT

ILCP92288 REV E ECN5219

CAD CONTROL  
DRAWING



VEKTEK, INC.  
1334 E. SIXTH AVE. P.O. BOX 625  
EMPORIA, KS. 66801 U.S.A.

E	5219	RELEASE	RLK	12/15/23	P92288	C	CLAMP, TOGGLE, VERT, HD, PNEU 8
REV	IN ACCORDANCE WITH ECN	EFFECTIVE DATE	REVISED BY	DATE	REFERENCE MODEL	REF REV	
DRW BY:	K. ROEMER	DRAWING STATUS: Released			TOLERANCES DO NOT APPLY DIMENSIONS ARE NOMINAL		SIZE D
DATE:	12-12-06	PRODUCTION APPROVED FOR RELEASED STATUS ONLY			ILCP92288		REV E