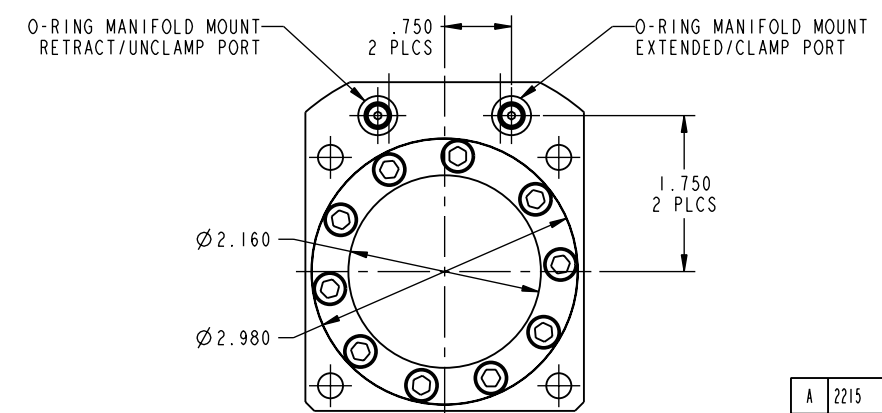
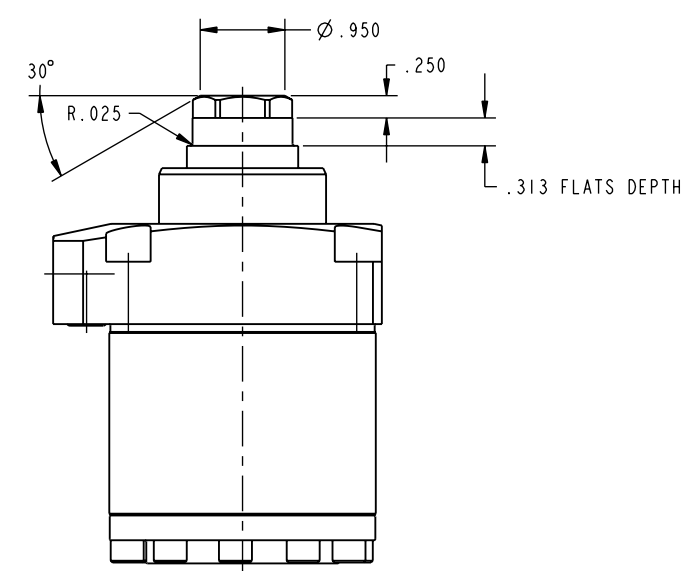
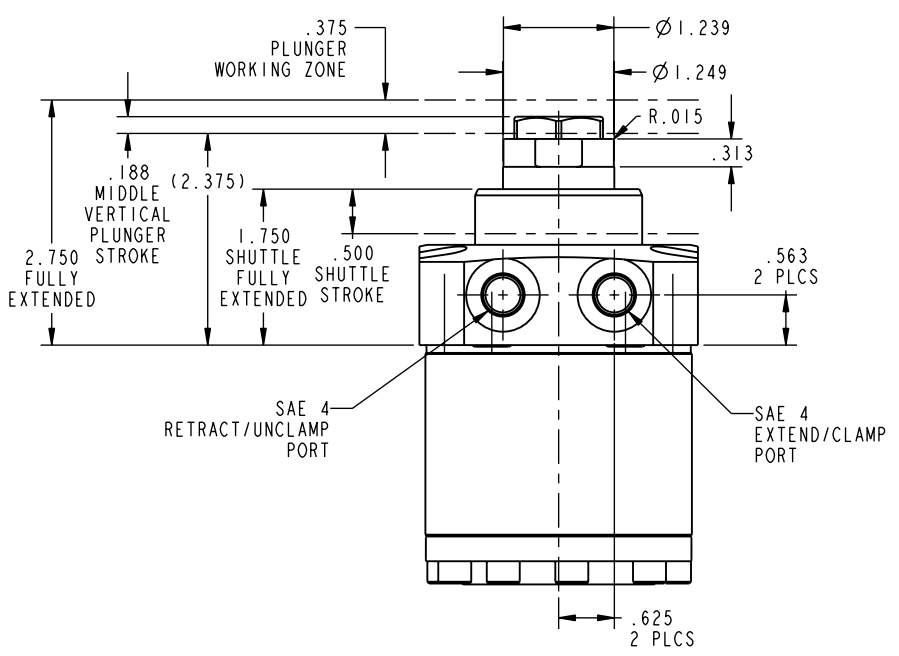
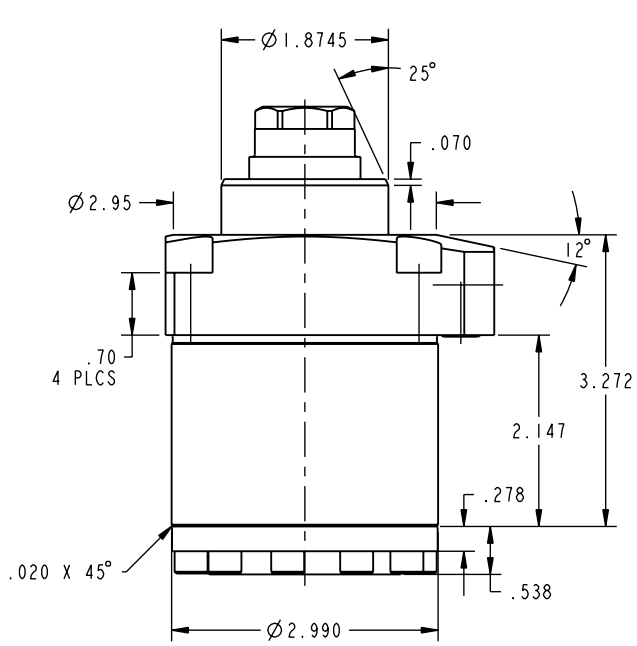


ILC10021200 REV A ECN 2215



CAD CONTROL DRAWING



VEKTEK, INC.
1334 E. SIXTH AVE. P.O. BOX 625
EMPORIA, KS. 66801 U.S.A.

REV	A	2215	RELEASE	ALUTHI	12-15-10	10021200	A	WS, DA, CGS, TF, 5500
REV	IN ACCORDANCE WITH ECN		EFFECTIVE DATE	REVISED BY	DATE	REFERENCE MODEL	REF REV	*****
DRW BY:	ALUTHI		DRAWING STATUS: Released			TOLERANCES DO NOT APPLY		SIZE
DATE:	10-22-10		PRODUCTION APPROVED FOR RELEASED STATUS ONLY			DIMENSIONS ARE NOMINAL		D ILC10021200 REV A

FORM FEG036, Rev. A