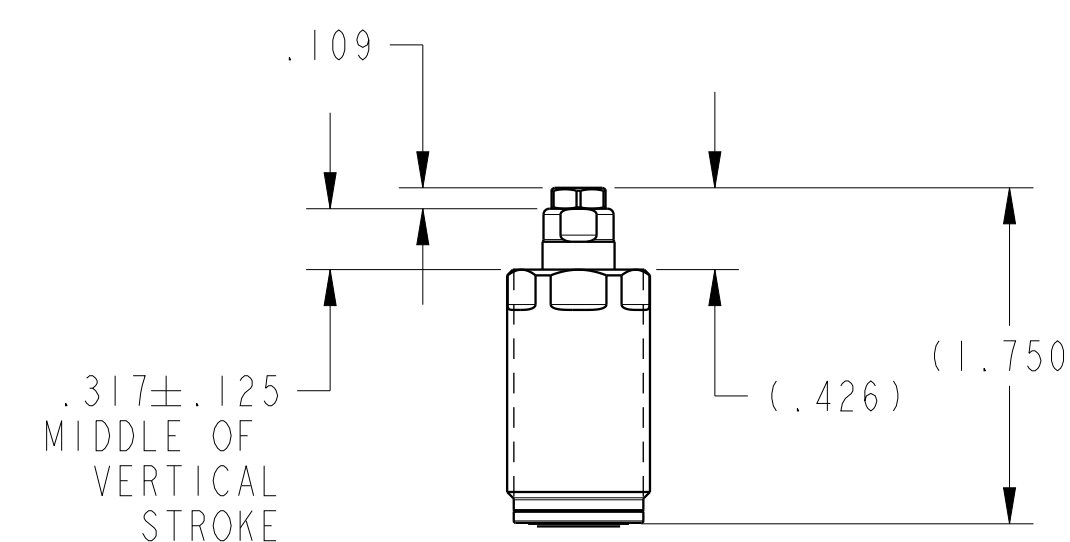
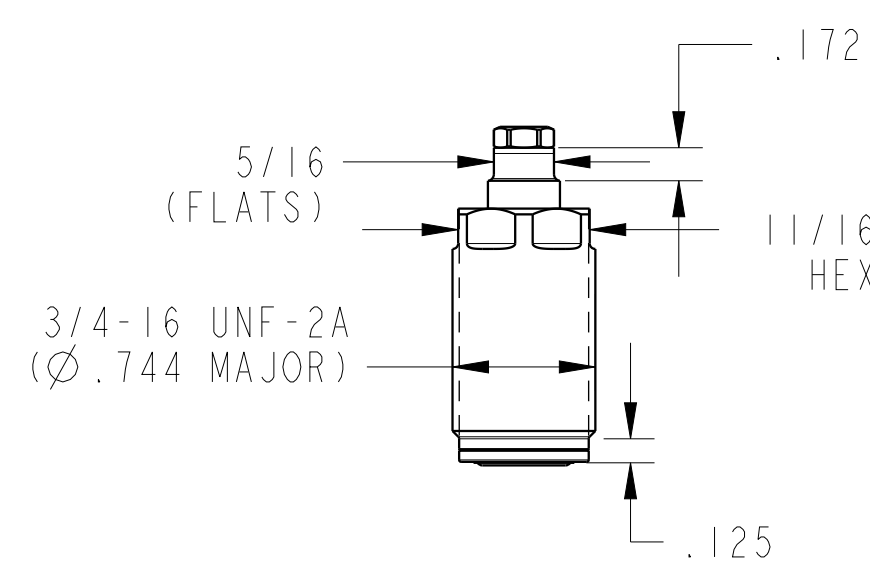
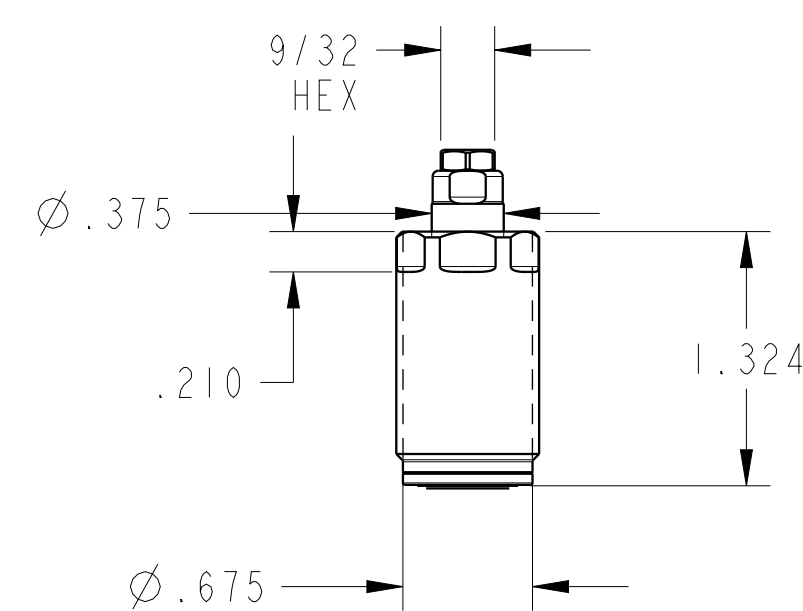
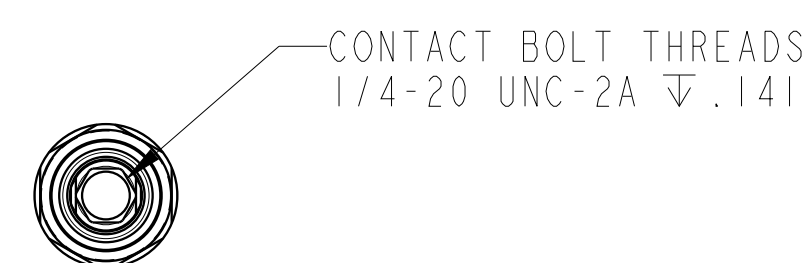
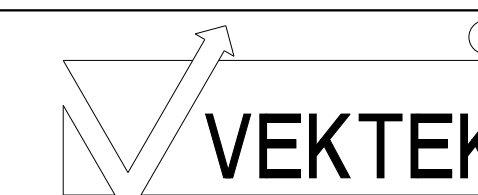


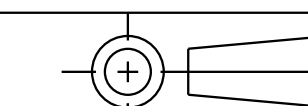
ILC10070410 REV A ECN3869



CAD CONTROL
DRAWING



VEKTEK, INC.
1334 E. SIXTH AVE. P.O. BOX 625
EMPORIA, KS. 66801 U.S.A.



A	3869	RELEASE	ALS	6/22/20
REV	IN ACCORDANCE WITH ECN	EFFECTIVE DATE	REVISED BY	DATE
DRW BY:	ALS	DRAWING STATUS: Released		
DATE:	07/02/19	PRODUCTION APPROVED FOR RELEASED STATUS ONLY		

TOLERANCES DO NOT APPLY
DIMENSIONS ARE NOMINAL

SIZE
D

ILC10070410 REV
A

FORM FEG036, Rev. B