

1

2

3

4

D

D

C

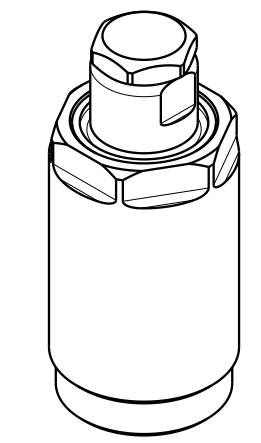
C

B

B

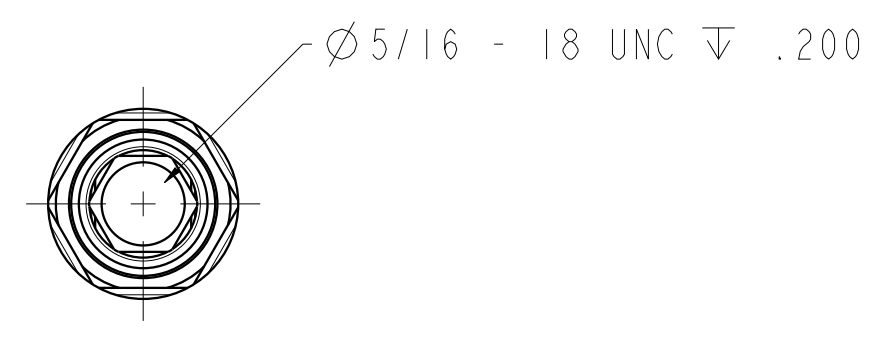
A

A

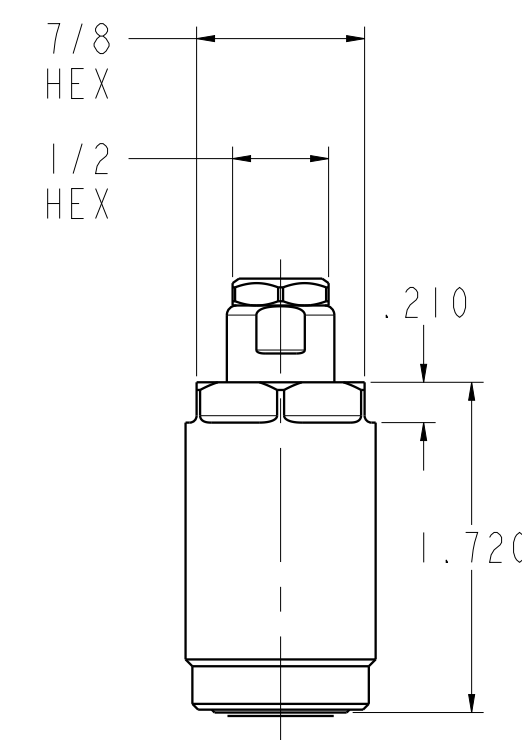


ILC10070610 REV B ECN 4096

SCALE
1.000



Ø 5/16 - 18 UNC ▽ .200

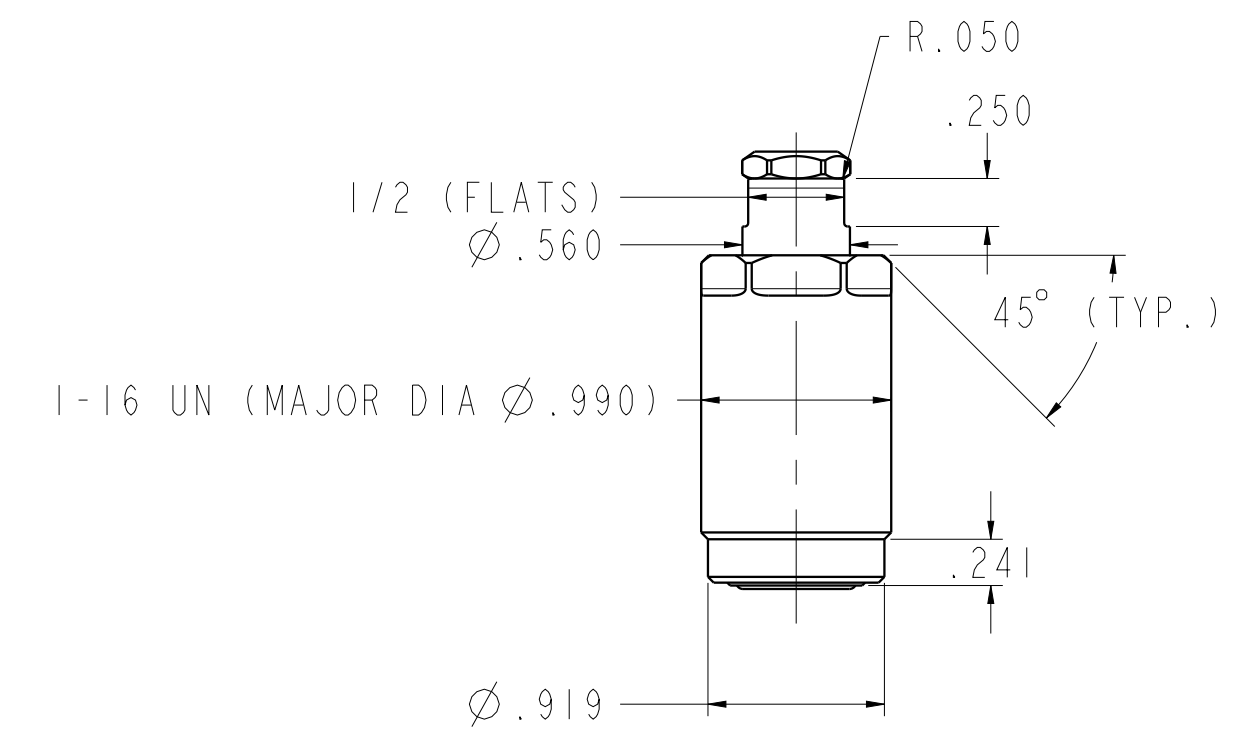


7/8
HEX

1/2
HEX

.210

1.720



R.050

.250

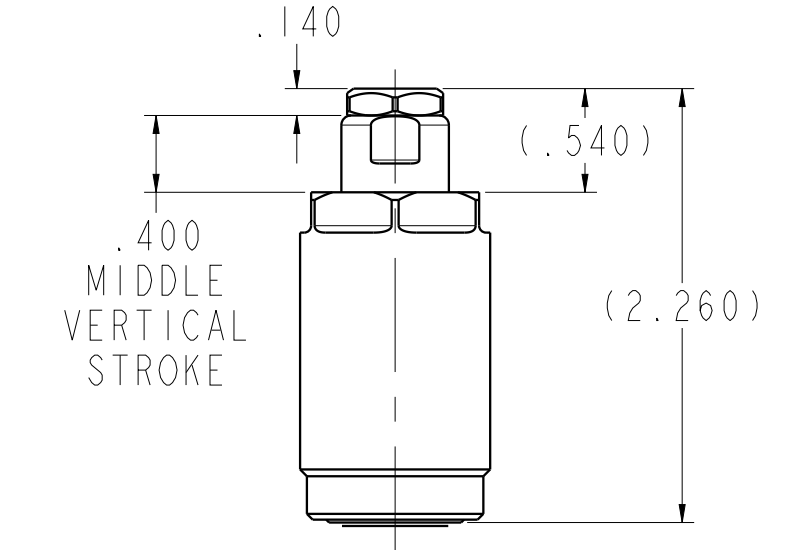
1/2 (FLATS)
Ø .560

45° (TYP.)

1-16 UN (MAJOR DIA Ø .990)

.241

Ø .919



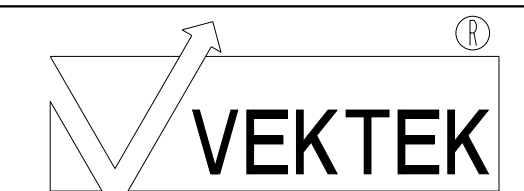
.140

(.540)

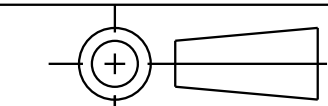
.400
MIDDLE
VERTICAL
STROKE

(2.260)

CAD CONTROL
DRAWING



VEKTEK, INC.
1334 E. SIXTH AVE. P.O. BOX 625
EMPORIA, KS. 66801 U.S.A.



B	4096	RELEASE	MJUST	3/5/20	10070610	C	WS, FA, CM, HC, 2000
REV	IN ACCORDANCE WITH ECN	EFFECTIVE DATE	REVISED BY	DATE	REFERENCE MODEL	REF REV	
DRW BY:	BCD	DRAWING STATUS: Released			TOLERANCES DO NOT APPLY DIMENSIONS ARE NOMINAL		SIZE D
DATE:	30-Aug-18	PRODUCTION APPROVED FOR RELEASED STATUS ONLY			ILC10070610		REV B