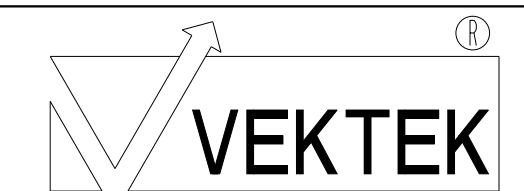


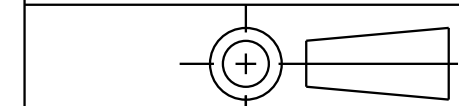
ILC10071010 REV A ECN3869

CAD CONTROL  
DRAWING



VEKTEK, INC.  
1334 E. SIXTH AVE. P.O. BOX 625  
EMPORIA, KS. 66801 U.S.A.

A	3869	RELEASE	ALS	6/22/20
REV	IN ACCORDANCE WITH ECN	EFFECTIVE DATE	REVISED BY	DATE
DRW BY: ALS		DRAWING STATUS: <b>Released</b>		
DATE: 07/02/19		PRODUCTION APPROVED FOR RELEASED STATUS ONLY		



10071010	A
REFERENCE MODEL	REF REV

WS, FA, CM, HC, 8000

TOLERANCES DO NOT APPLY  
DIMENSIONS ARE NOMINAL

SIZE D ILC10071010 REV A