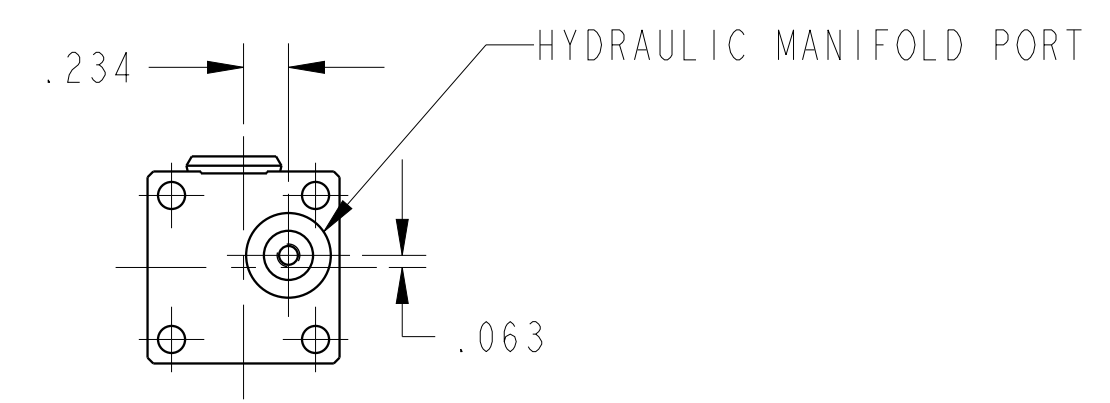
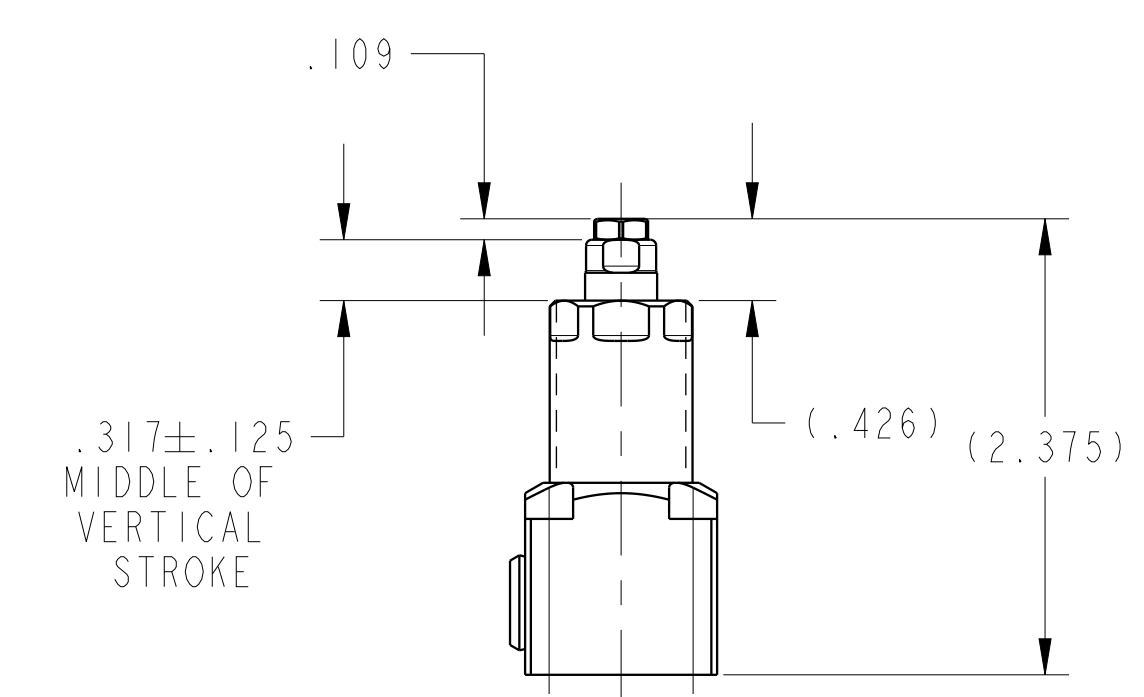
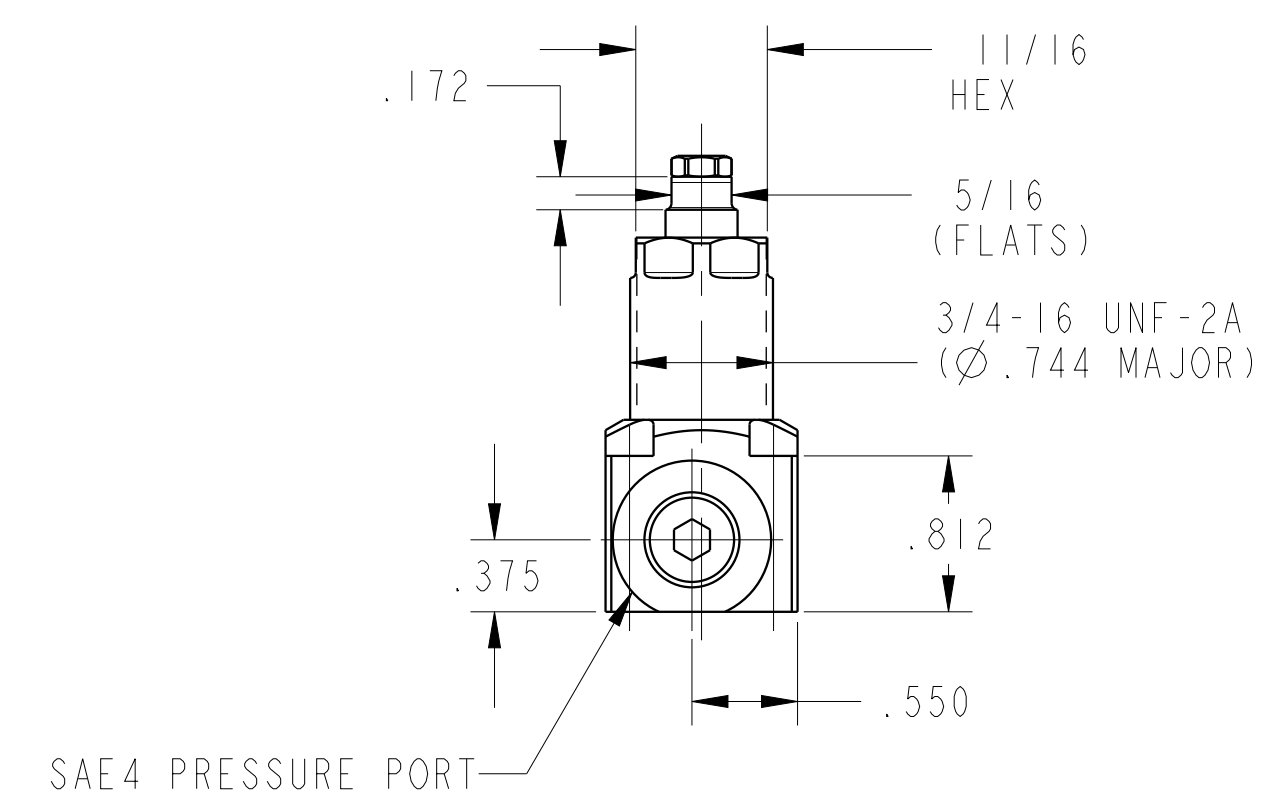
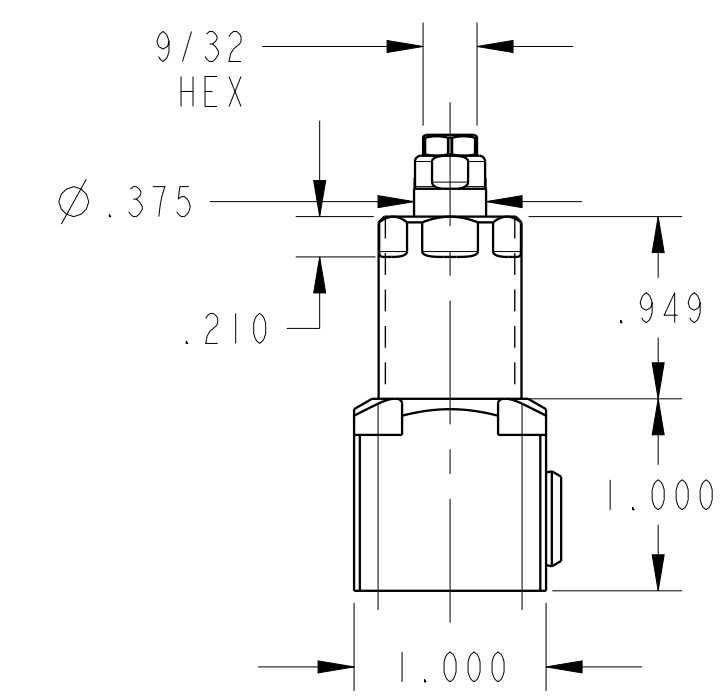
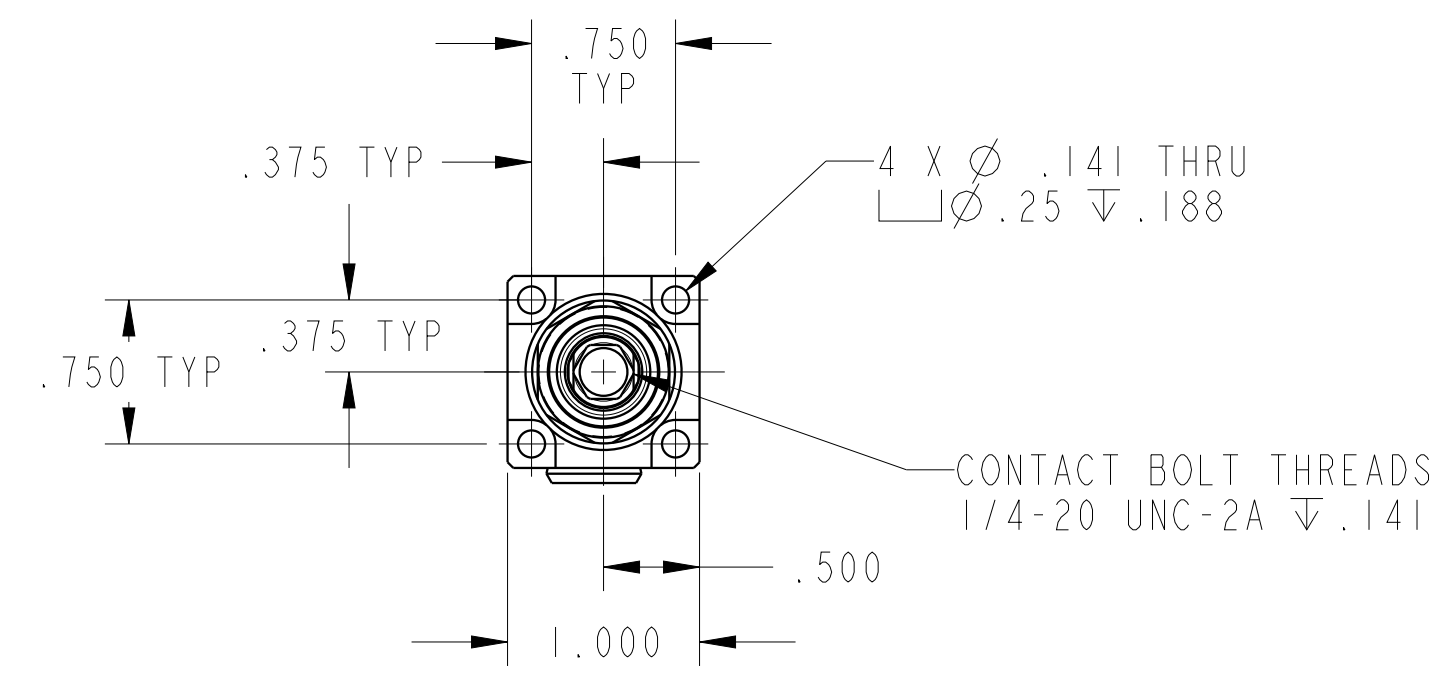
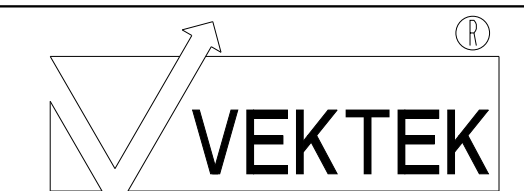


ILC10080420 REV A ECN3869



CAD CONTROL DRAWING



VEKTEK, INC.
1334 E. SIXTH AVE. P.O. BOX 625
EMPORIA, KS. 66801 U.S.A.

A	3869	RELEASE	ALS	6/22/20	10080420	A	WS, FA, BM, HC, 1000
REV	IN ACCORDANCE WITH ECN	EFFECTIVE DATE	REVISED BY	DATE	REFERENCE MODEL	REF REV	
DRW BY:	ALS	DRAWING STATUS: Released			TOLERANCES DO NOT APPLY DIMENSIONS ARE NOMINAL		SIZE D
DATE:	07/02/19	PRODUCTION APPROVED FOR RELEASED STATUS ONLY			ILC10080420		REV A