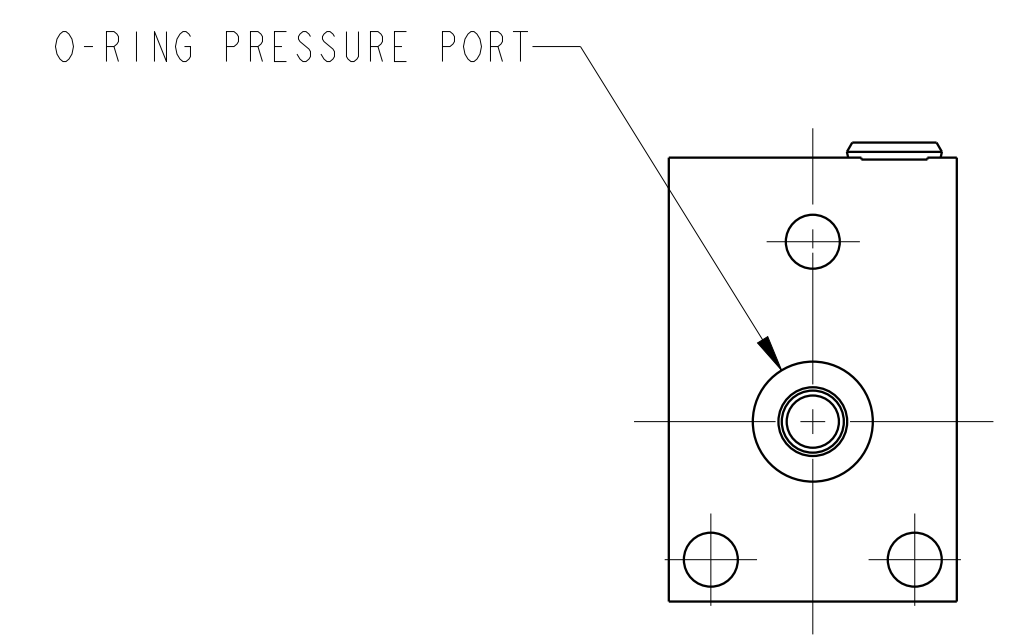
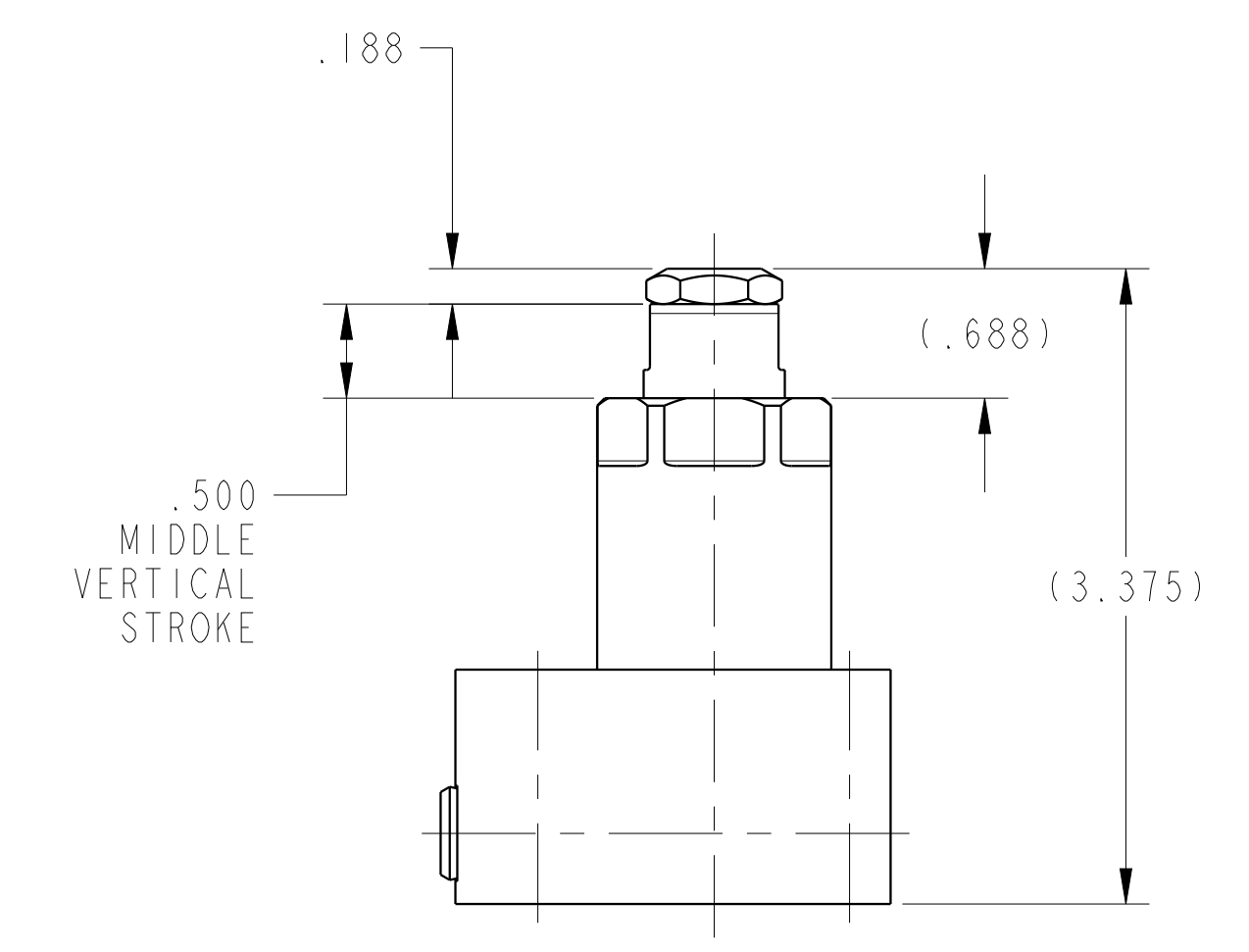
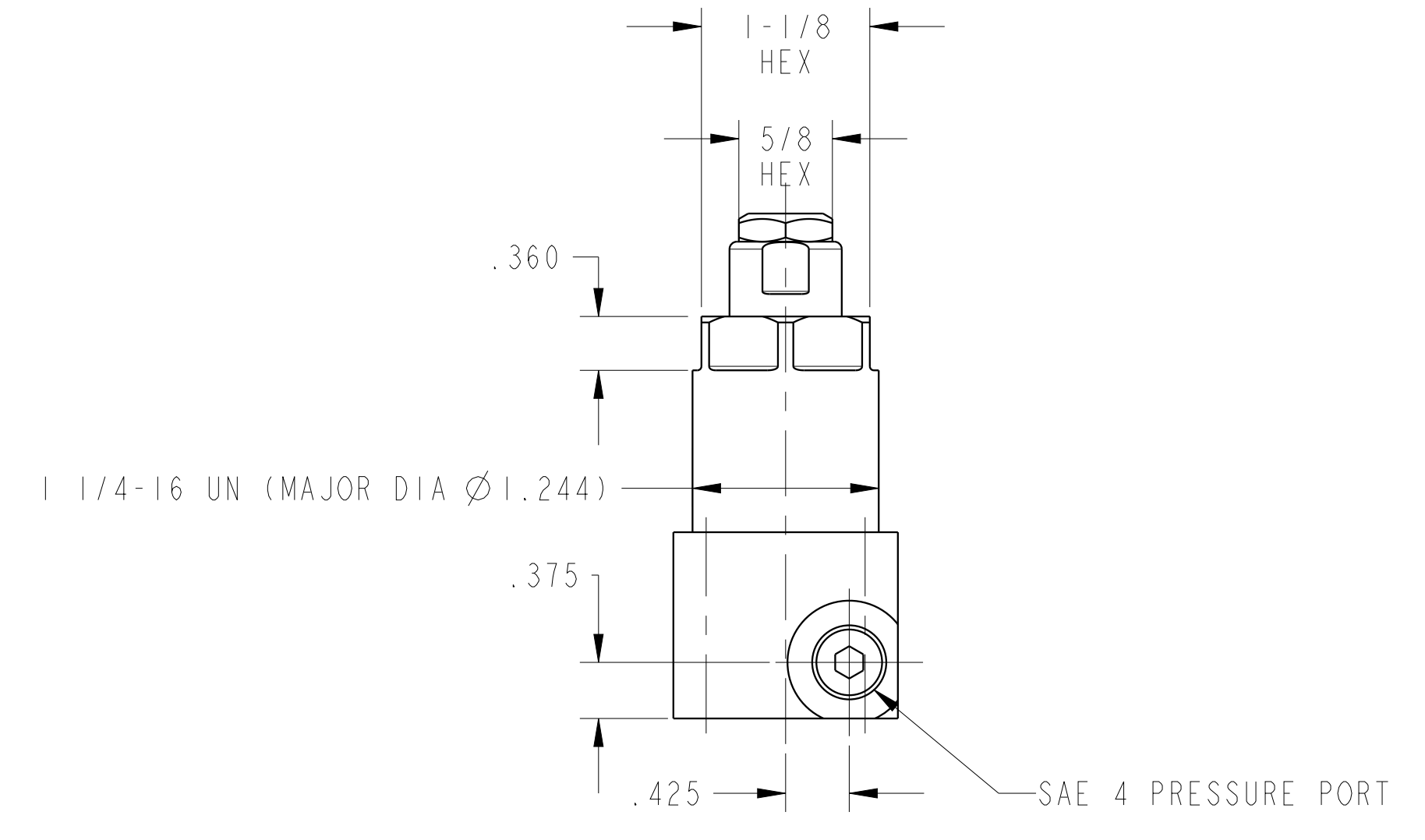
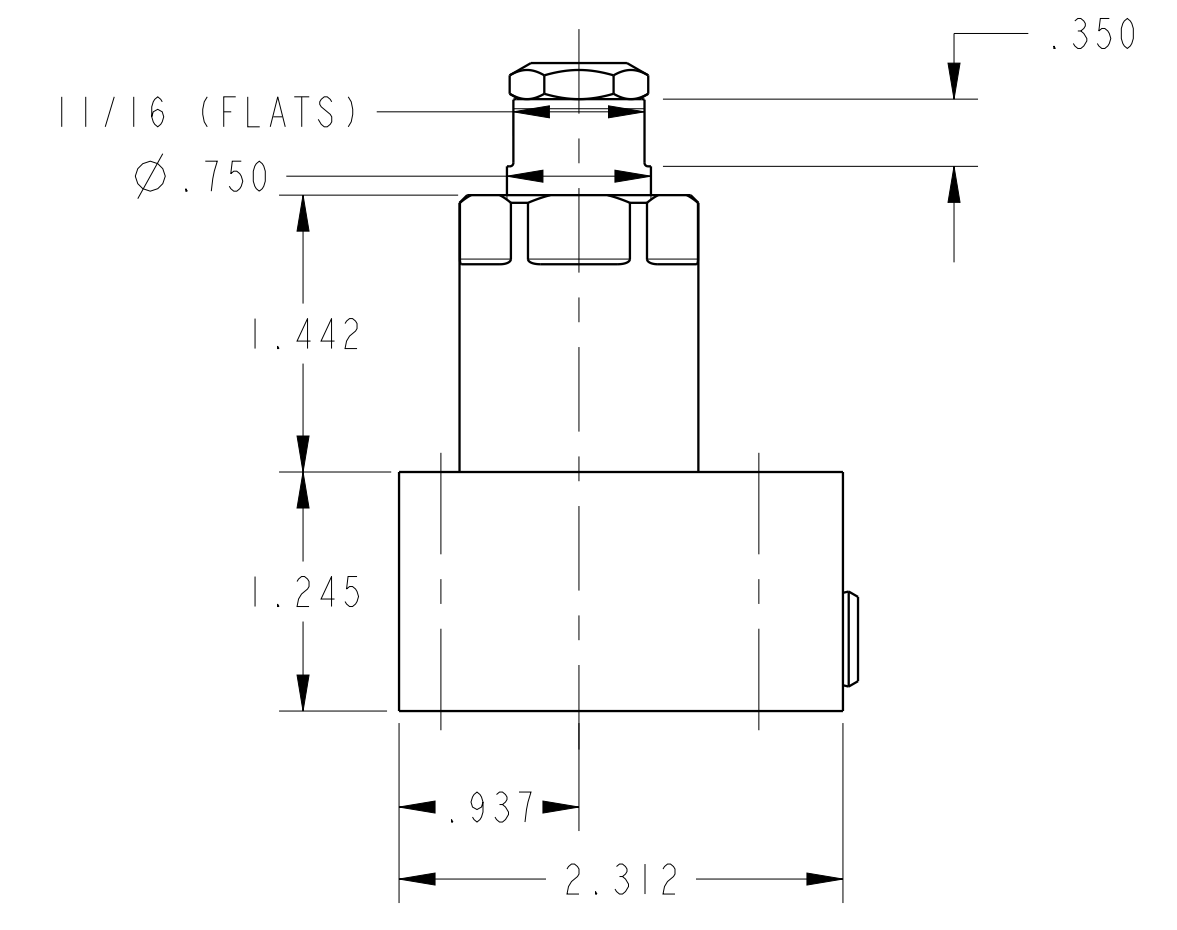


ILC10080810 REV B ECN4096

SCALE 1.000



<b>CAD CONTROL DRAWING</b>			
		VEKTEK, INC. 1334 E. SIXTH AVE. P.O. BOX 625 EMPORIA, KS. 66801 U.S.A.	

B	4096	RELEASE	MJUST	3/9/20	10080810	C	WS, FA, BM, HC, 4000, 3 BOLT
REV	IN ACCORDANCE WITH ECN	EFFECTIVE DATE	REVISED BY	DATE	REFERENCE MODEL	REF REV	
DRW BY: BCD		<b>DRAWING STATUS: Released</b>			TOLERANCES DO NOT APPLY DIMENSIONS ARE NOMINAL		SIZE D
DATE: 30-Aug-18		PRODUCTION APPROVED FOR RELEASED STATUS ONLY			ILC10080810		REV B