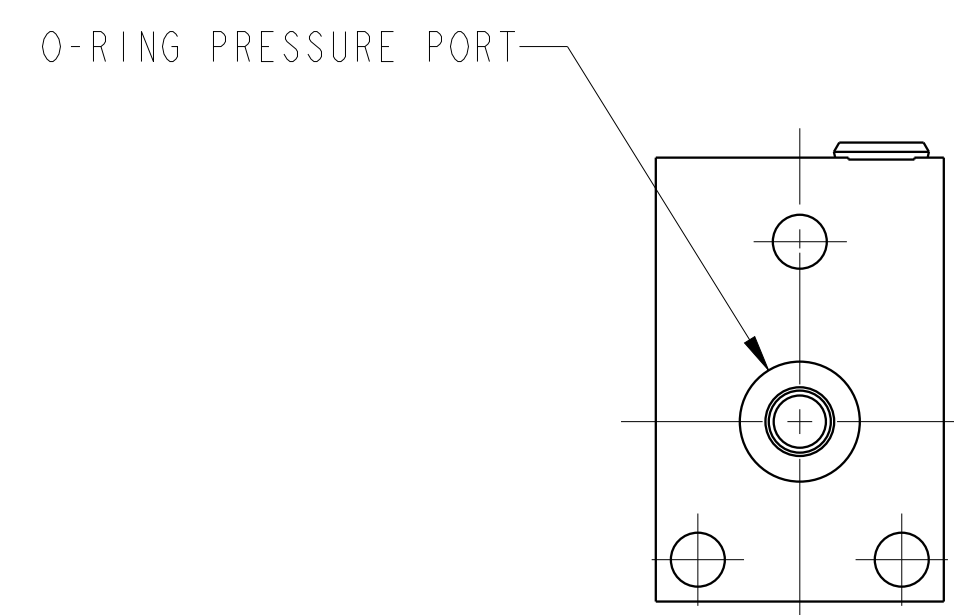
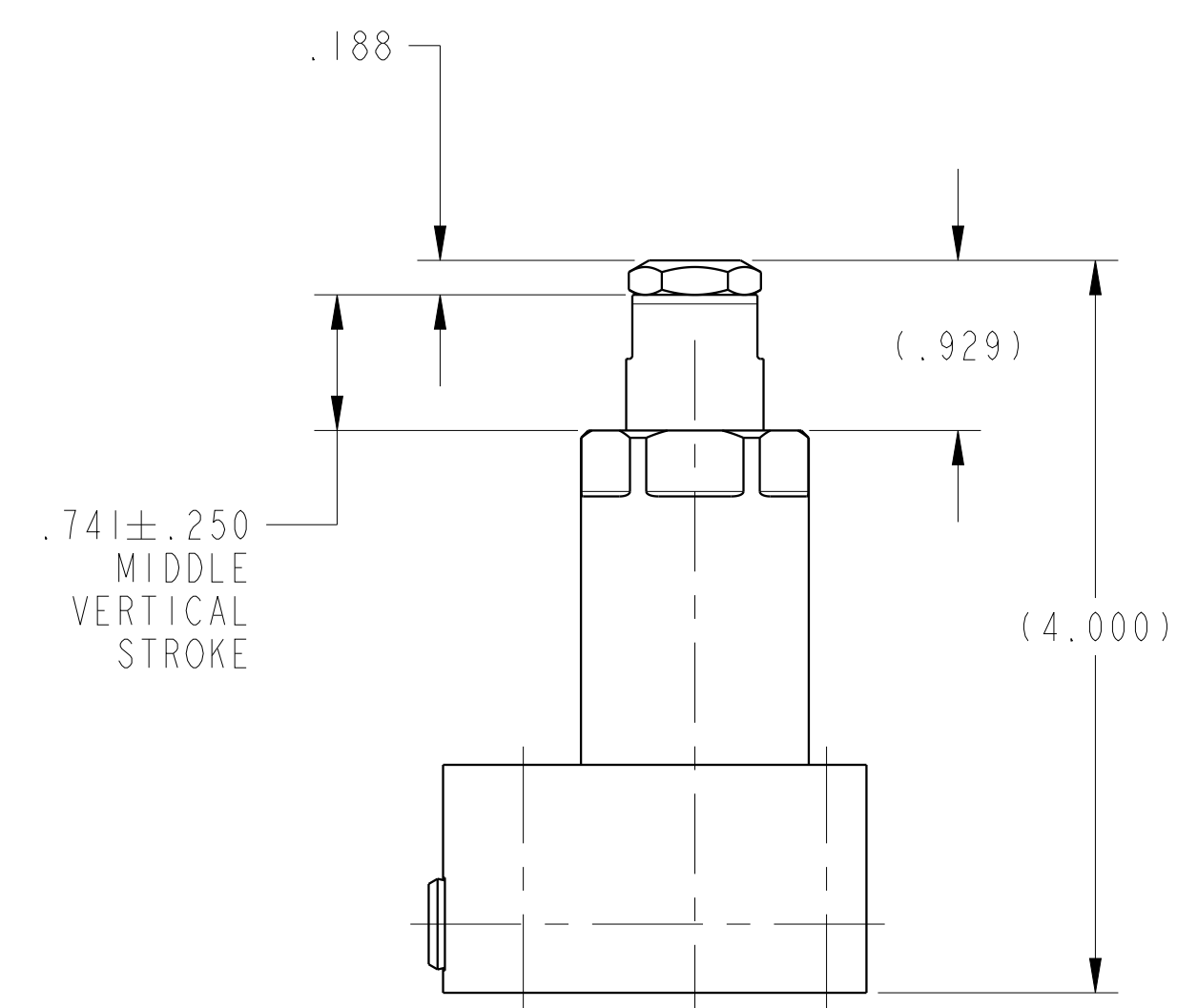
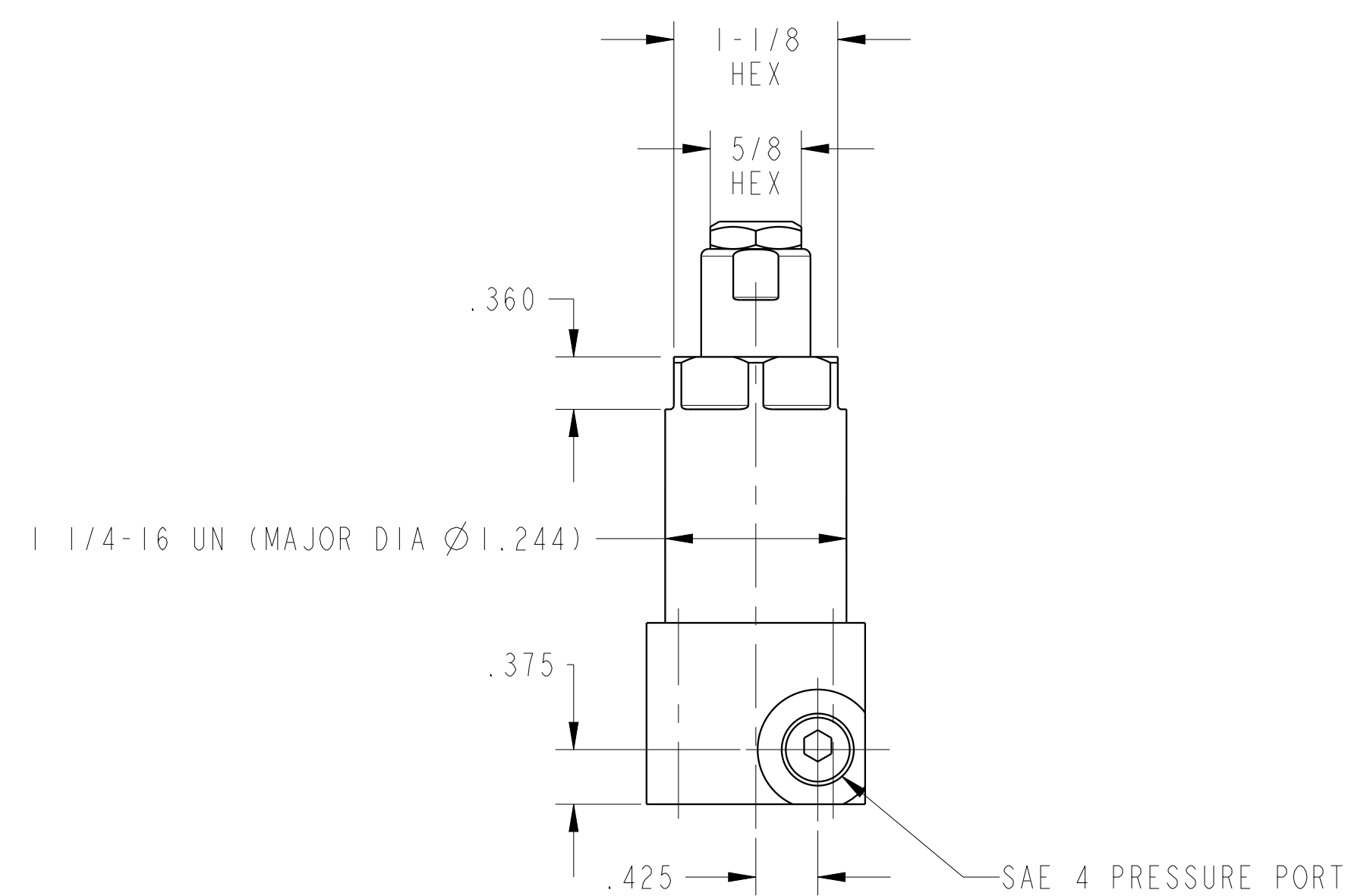
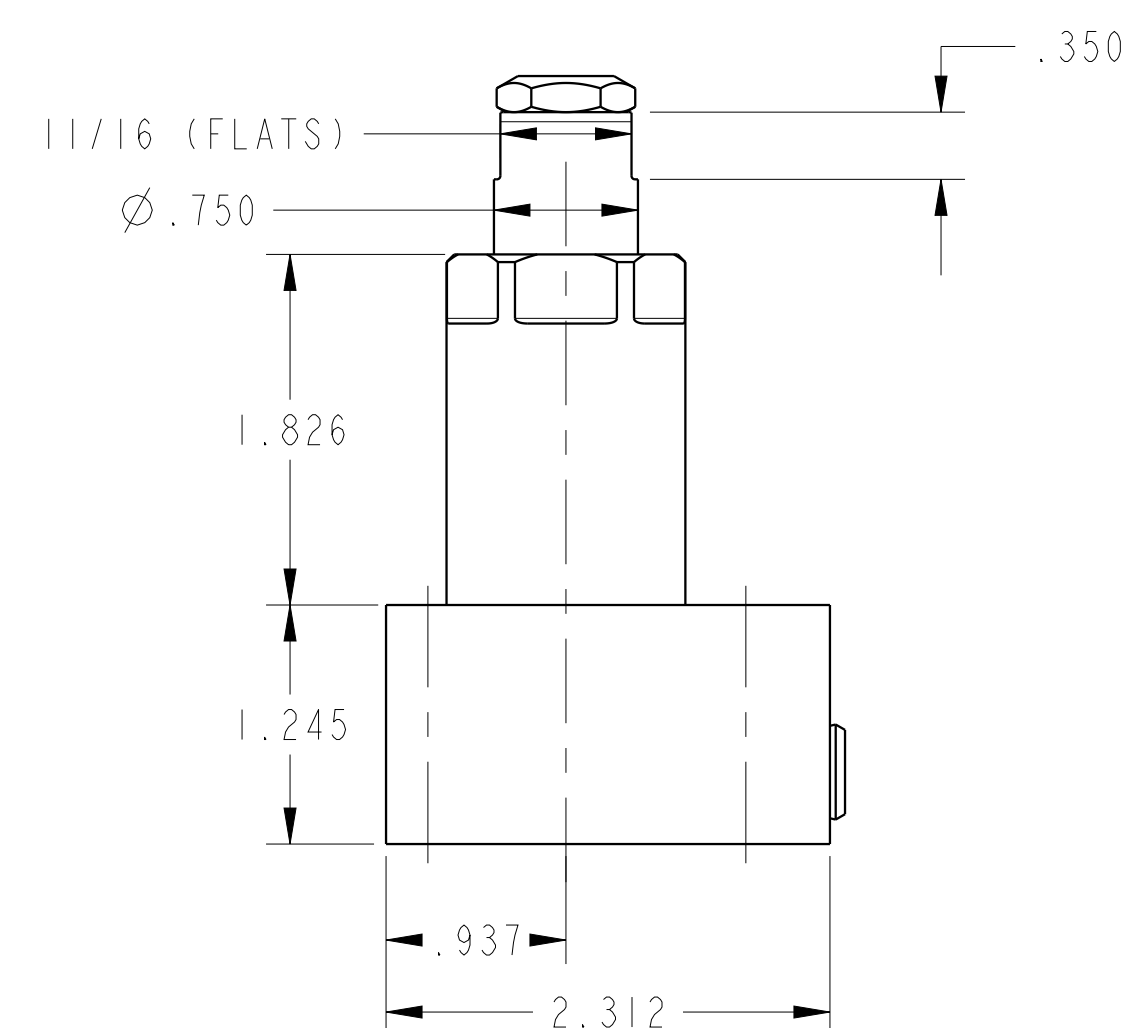
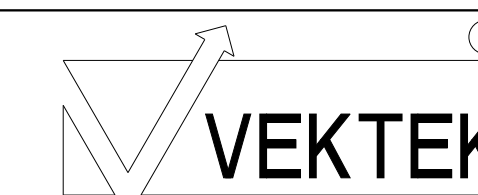


ILC10080816 REV A ECN3869



CAD CONTROL  
 DRAWING



VEKTEK, INC.  
 1334 E. SIXTH AVE. P.O. BOX 625  
 EMPORIA, KS. 66801 U.S.A.

A	3869	RELEASE	ALS	6/22/20	10080816	A	WS, FA, BM, HC, 4000, LS, 3 BOLT
REV	IN ACCORDANCE WITH ECN	EFFECTIVE DATE	REVISED BY	DATE	REFERENCE MODEL	REF REV	
DRW BY:	ALS	DRAWING STATUS: <b>Released</b>			TOLERANCES DO NOT APPLY DIMENSIONS ARE NOMINAL		SIZE D
DATE:	3/2/20	PRODUCTION APPROVED FOR RELEASED STATUS ONLY			I L C 1 0 0 8 0 8 1 6		REV A