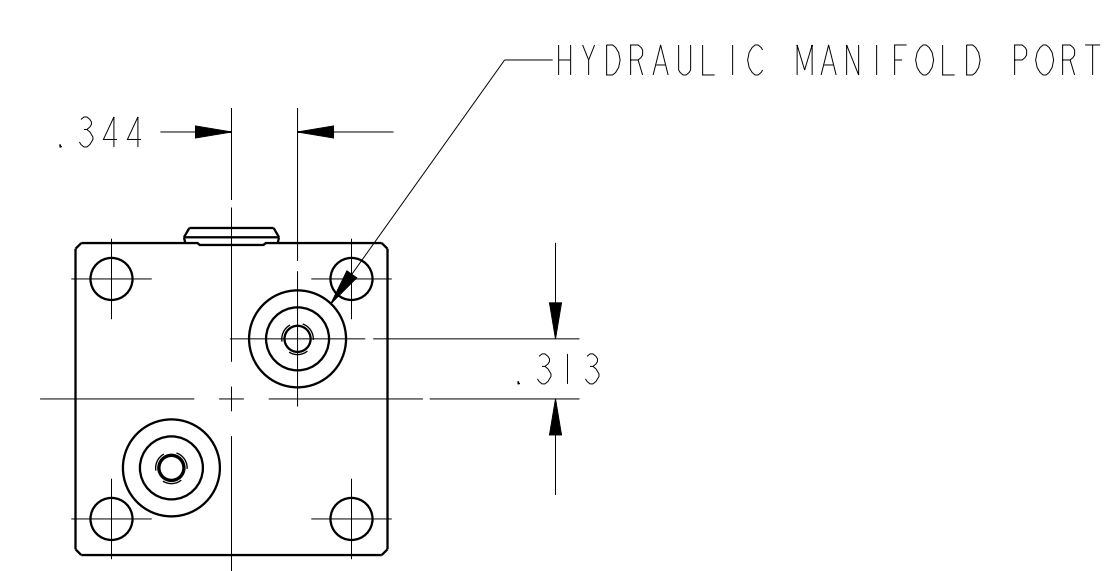
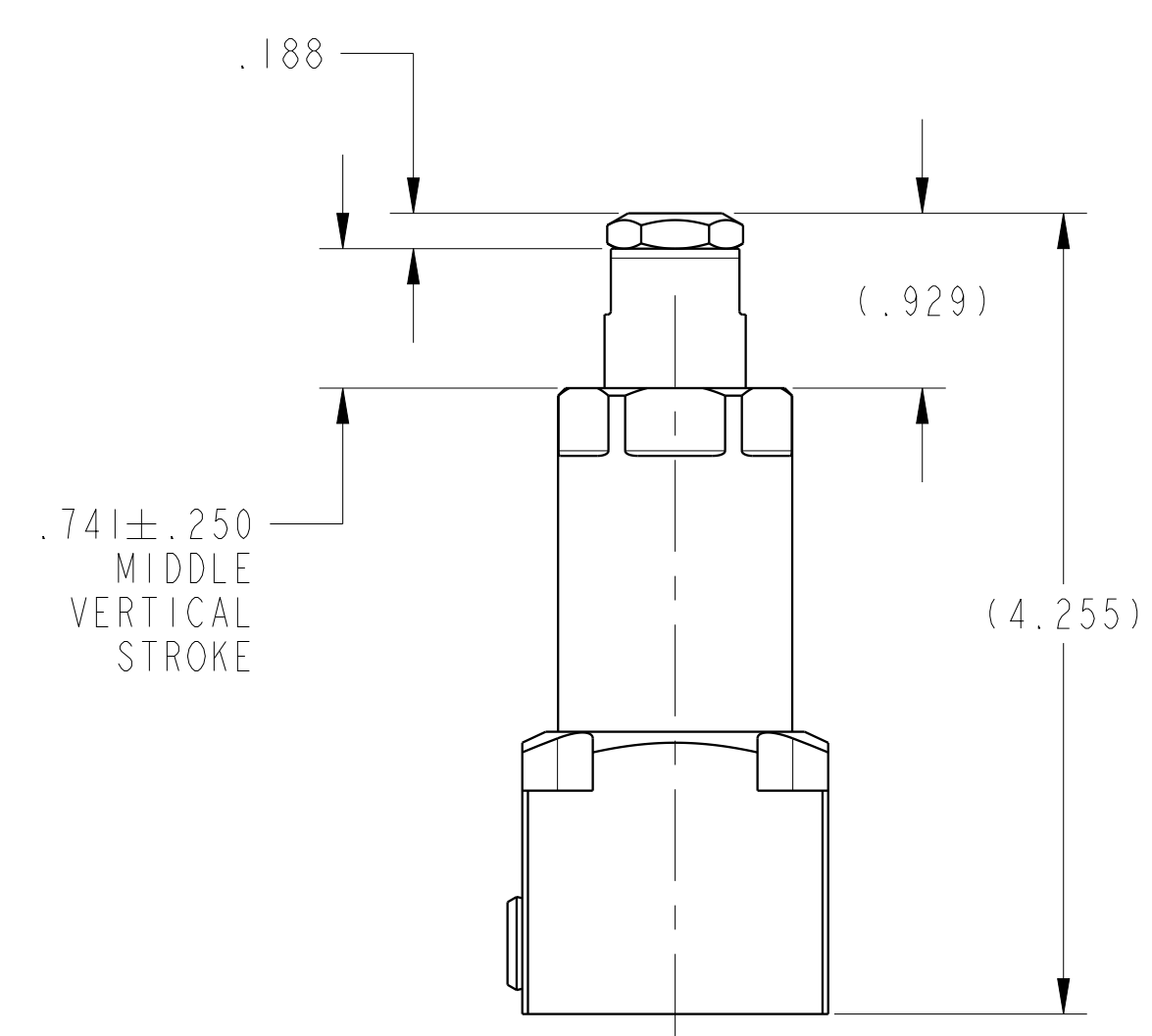
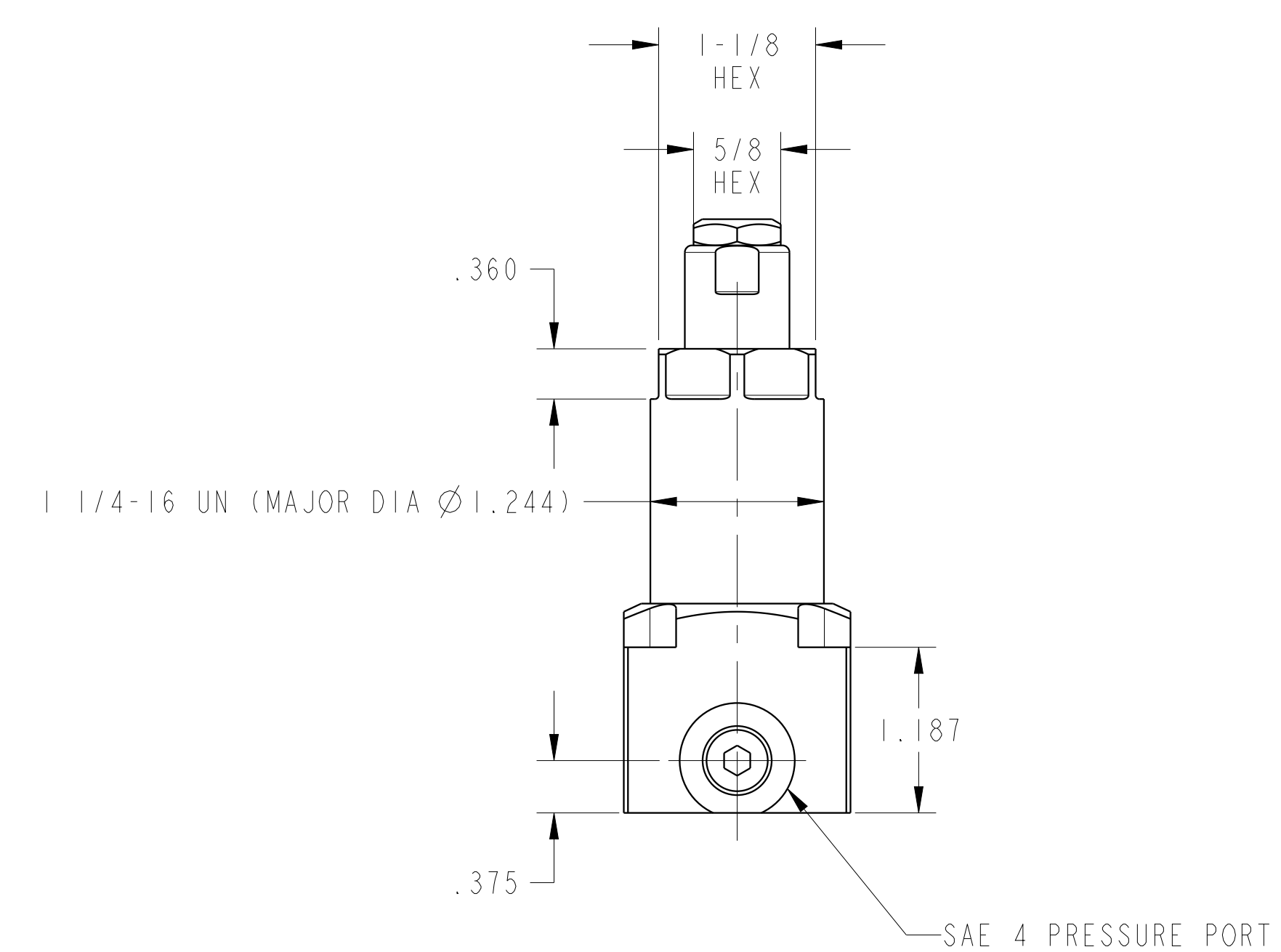
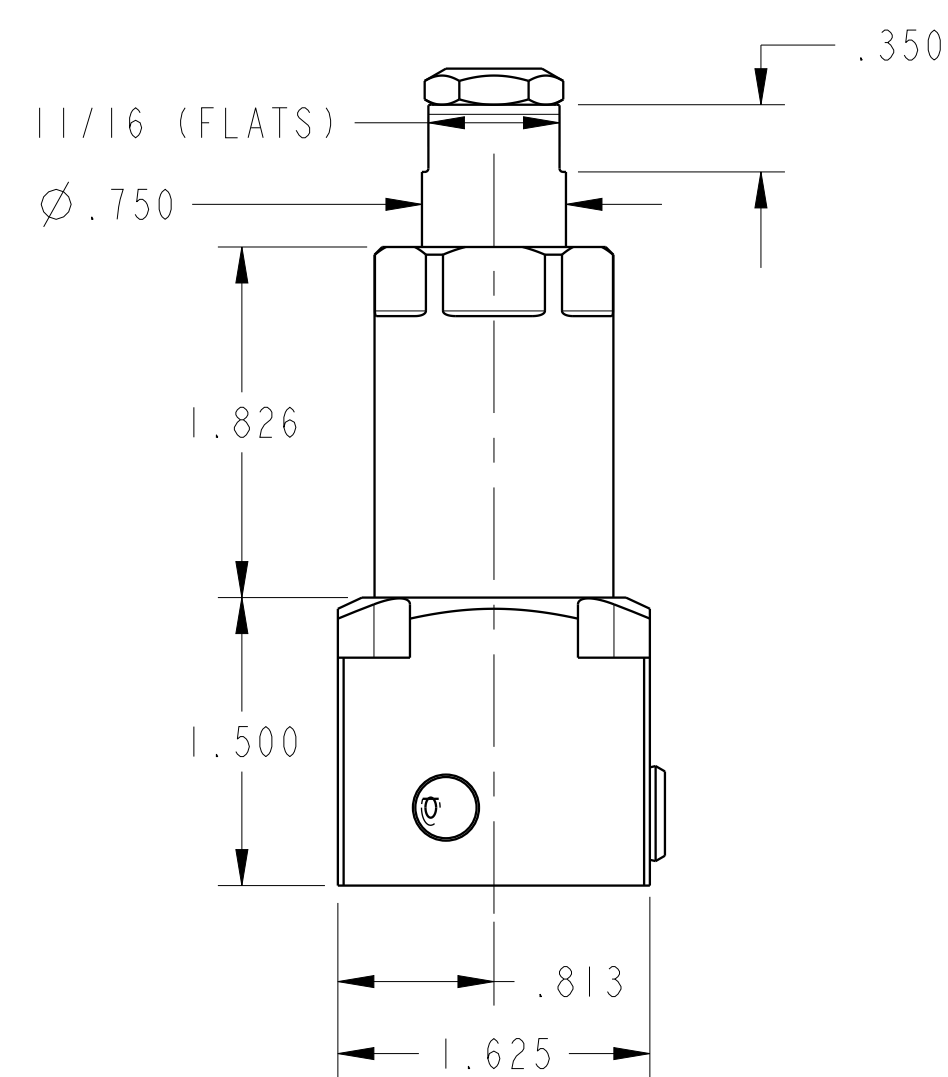
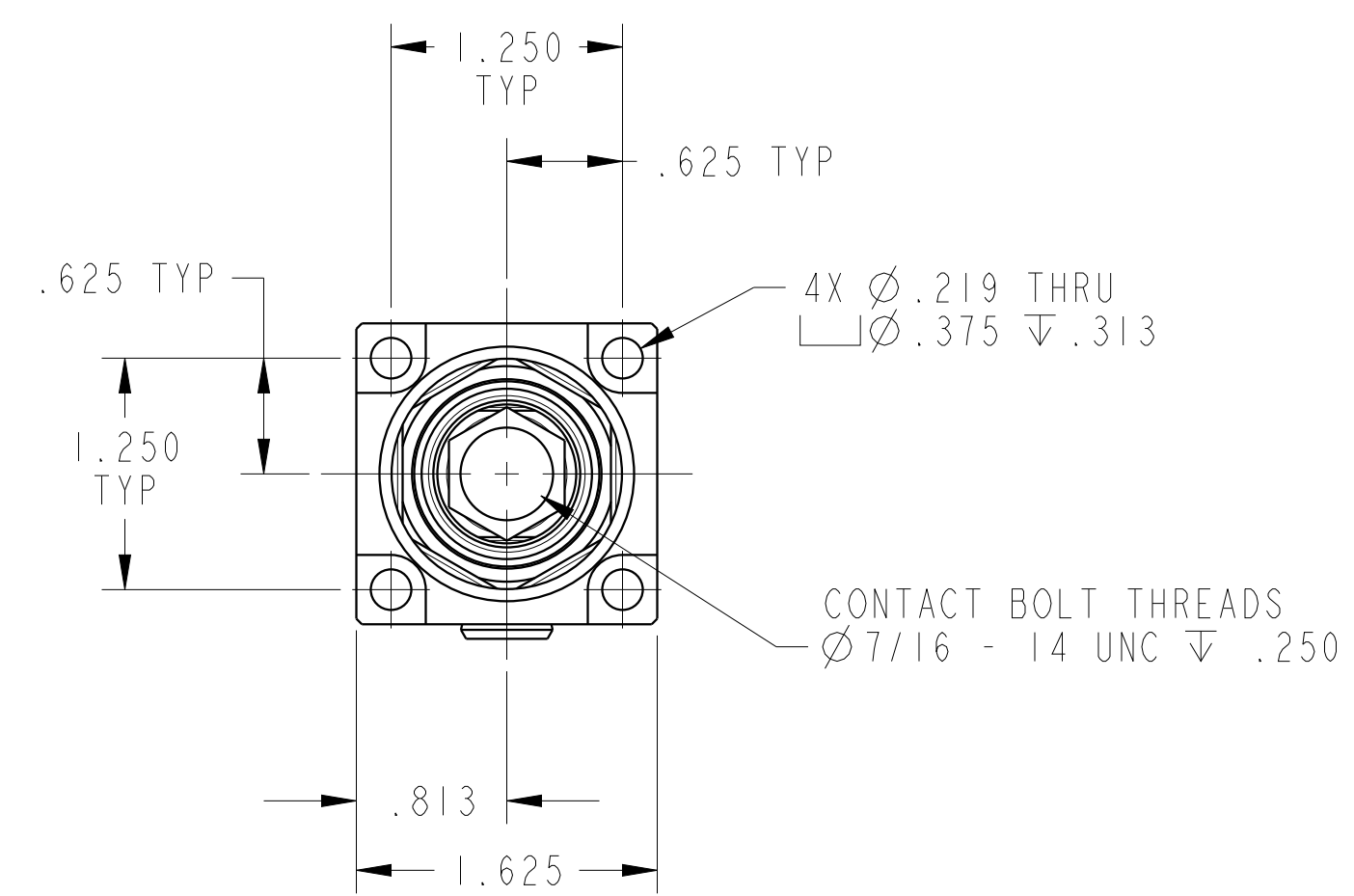
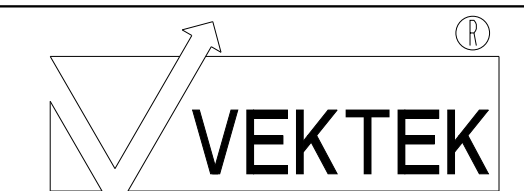


ILC10080826 REV A ECN3869



CAD CONTROL DRAWING



VEKTEK, INC.
1334 E. SIXTH AVE. P.O. BOX 625
EMPORIA, KS. 66801 U.S.A.

A	3869	RELEASE	ALS	6/22/20
REV	IN ACCORDANCE WITH ECN	EFFECTIVE DATE	REVISED BY	DATE
DRW BY:	ALS	DRAWING STATUS: Released		
DATE:	3/2/20	PRODUCTION APPROVED FOR RELEASED STATUS ONLY		

10080826	A
REFERENCE MODEL	REF REV
TOLERANCES DO NOT APPLY DIMENSIONS ARE NOMINAL	

WS, FA, BM, HC, 4000, LS	SIZE D	ILC10080826	REV A
--------------------------	--------	-------------	-------