

1

2

3

4

D

D

C

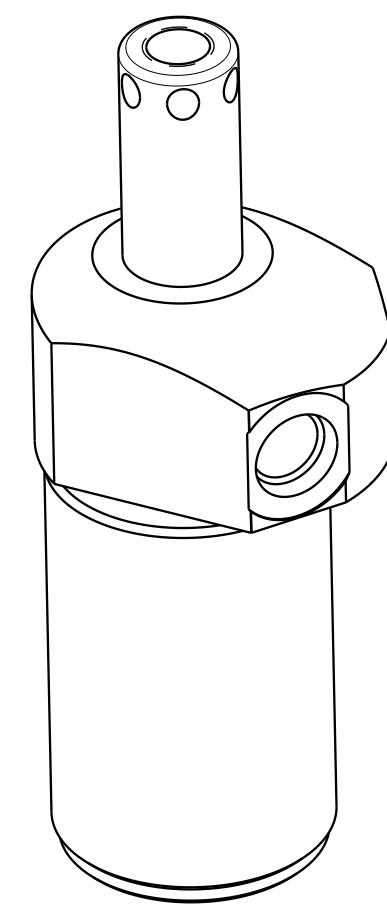
C

B

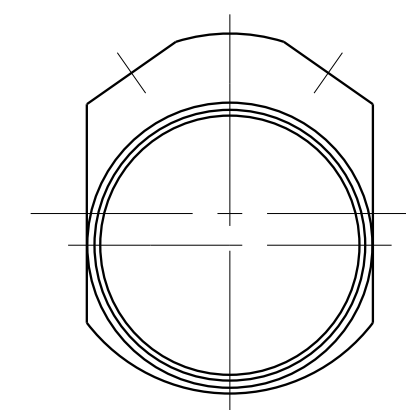
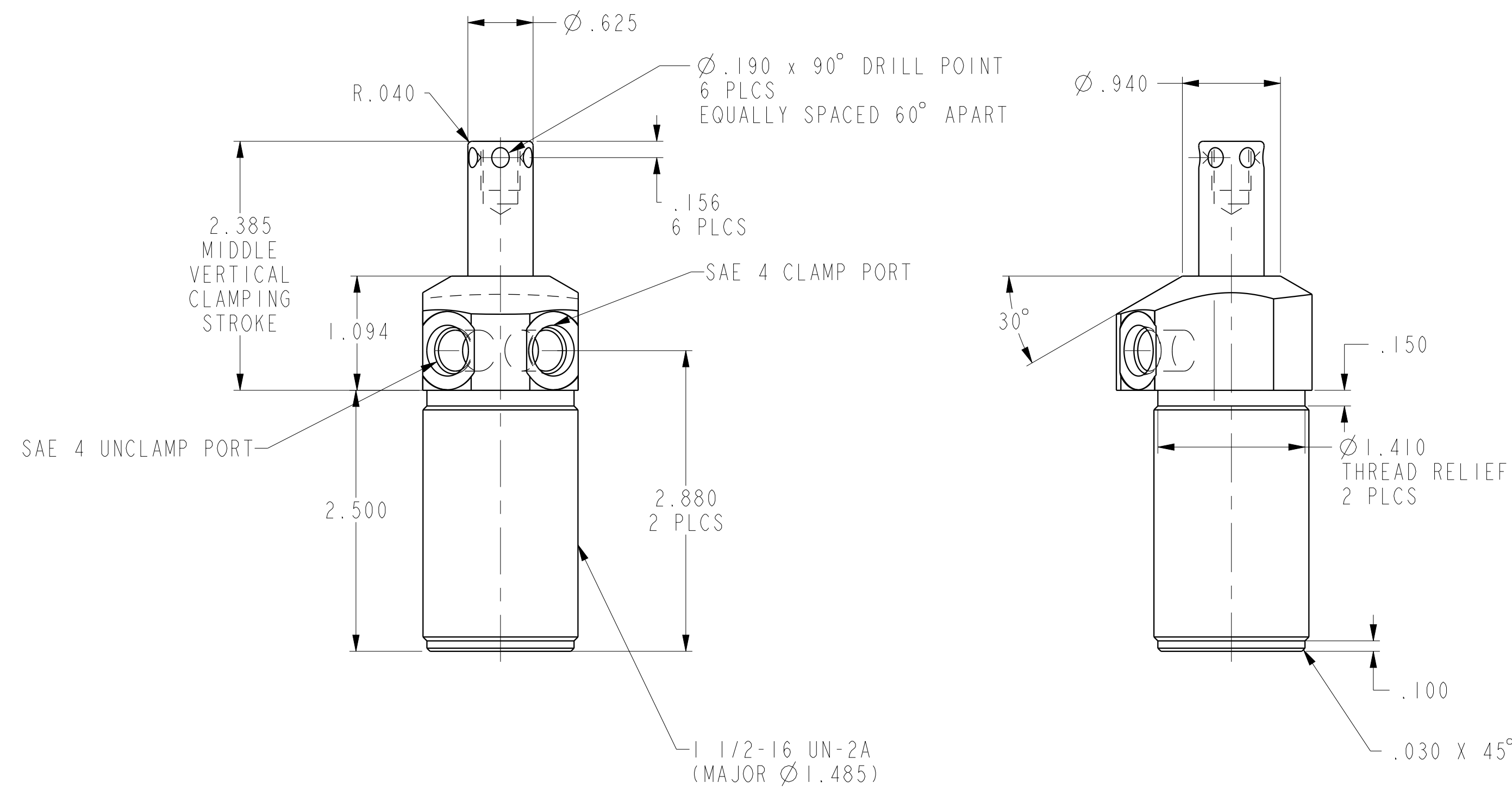
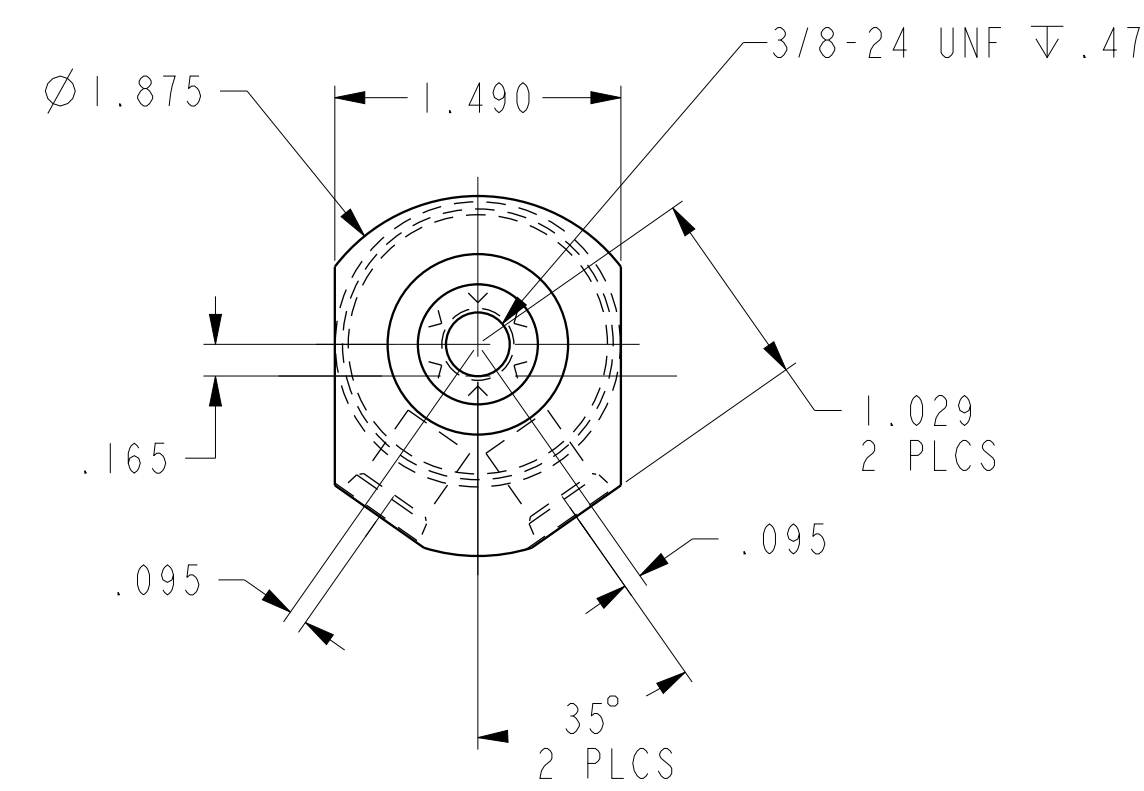
B

A

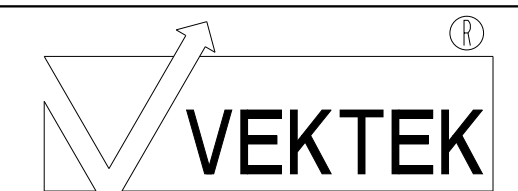
A



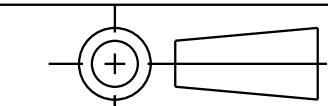
ILC14020901S REV A ECN 3396



CAD CONTROL DRAWING



VEKTEK, INC.  
1334 E. SIXTH AVE. P.O. BOX 625  
EMPORIA, KS. 66801 U.S.A.



|         |                        |  |            |          |
|---------|------------------------|--|------------|----------|
| A       | 3396                   | RELEASE                                      | JDW        | 01/17/18 |
| REV     | IN ACCORDANCE WITH ECN | EFFECTIVE DATE                               | REVISED BY | DATE     |
| DRW BY: | JDW                    | DRAWING STATUS: <b>Released</b>              |            |          |
| DATE:   | 01/17/18               | PRODUCTION APPROVED FOR RELEASED STATUS ONLY |            |          |

|   |         |
|---|---------|
| 14020901S   | A       |
| REFERENCE MODEL                                   | REF REV |
| TOLERANCES DO NOT APPLY<br>DIMENSIONS ARE NOMINAL |         |

|              |   |     |   |
|--------------|---|-----|---|
| SIZE         | D | REV | A |
| ILC14020901S |   |     |   |

2

3

4

SHEET 1 OF 1