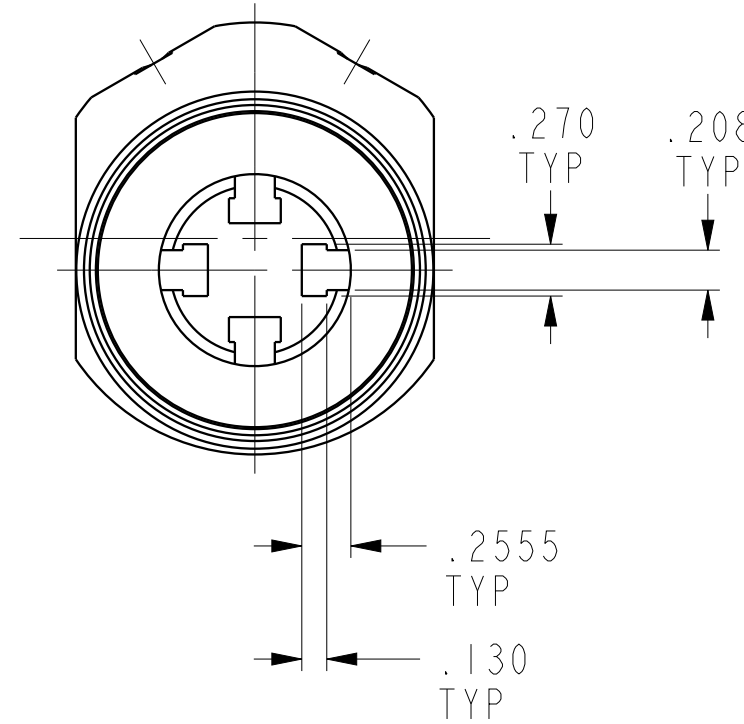
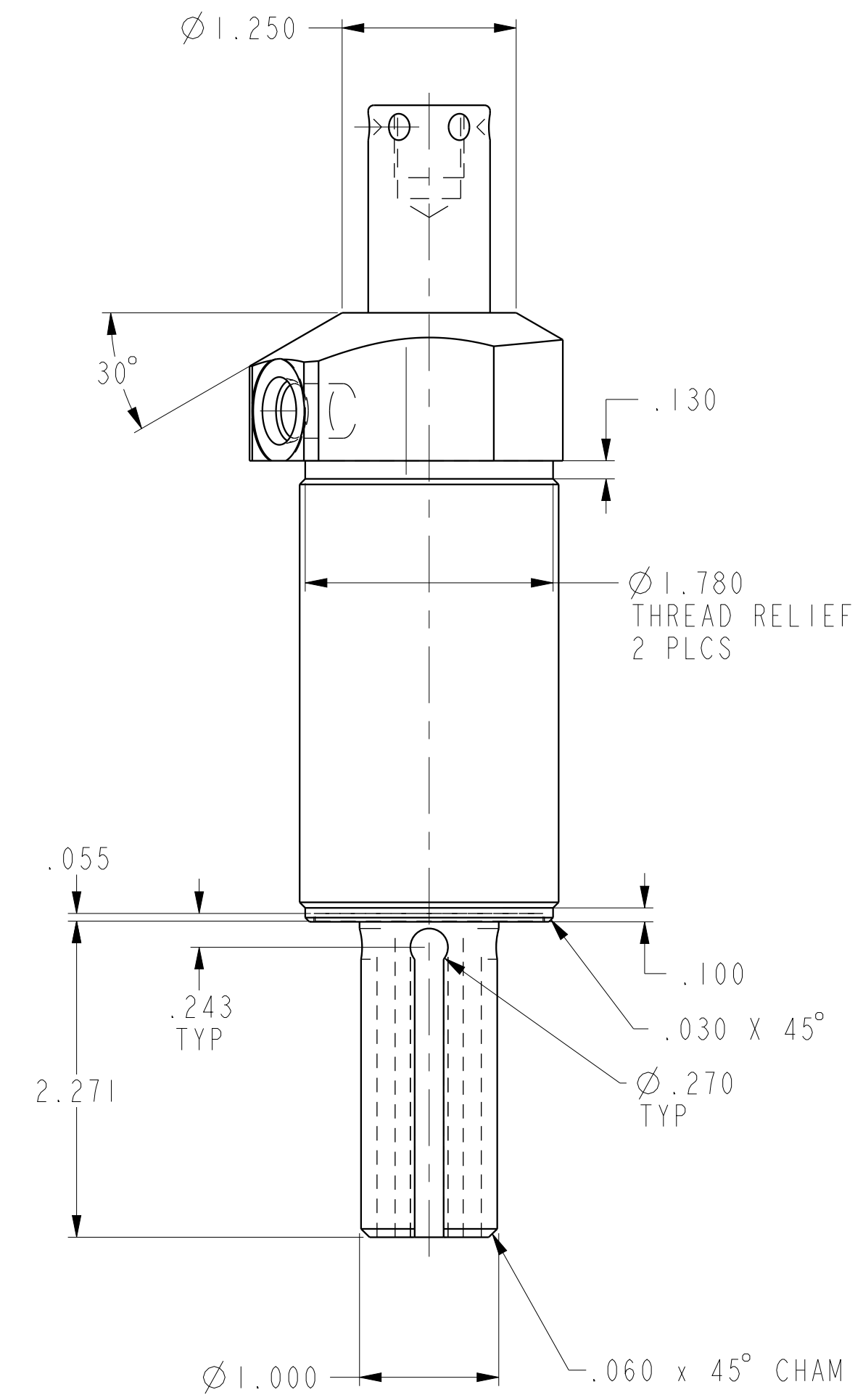
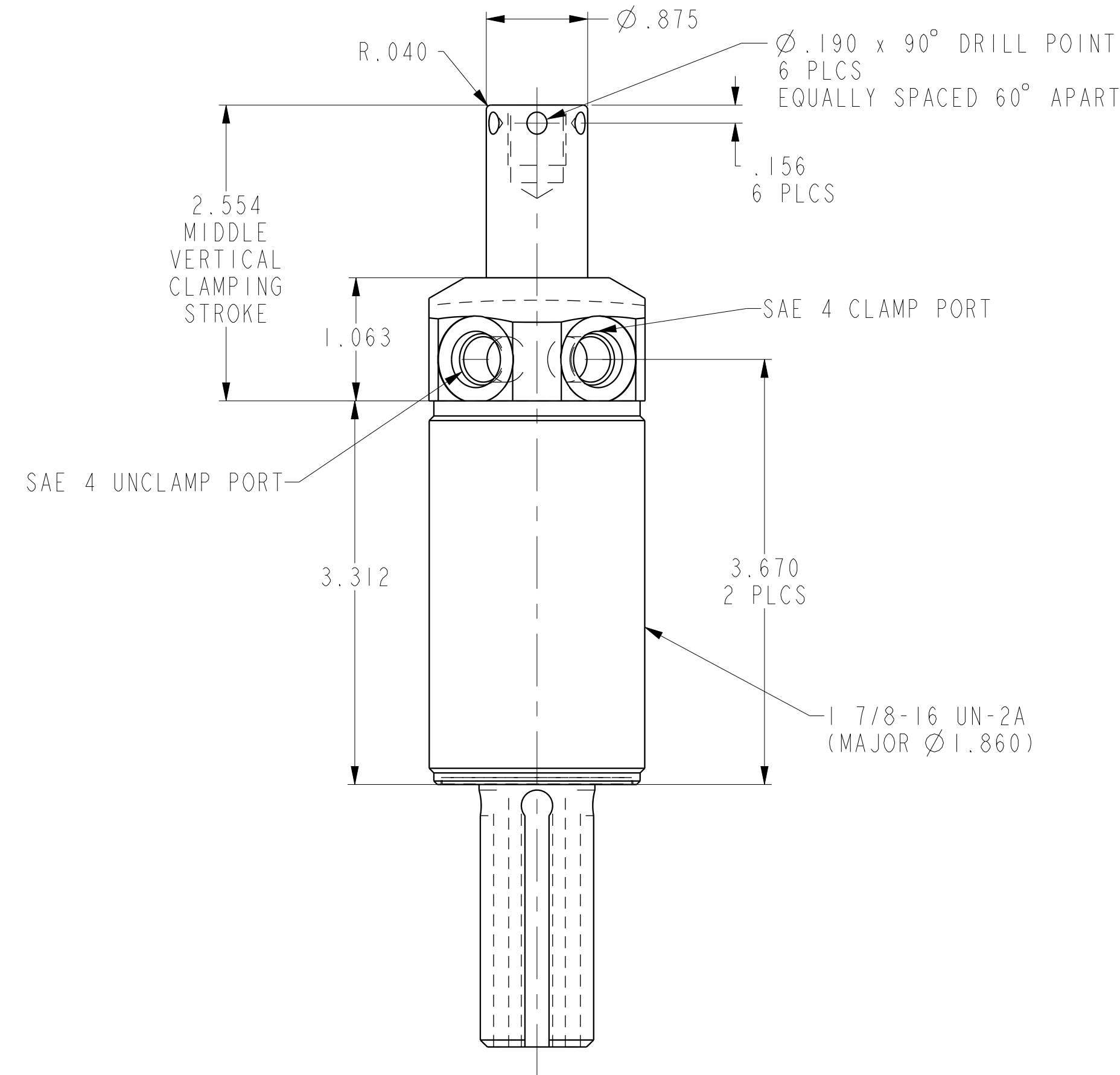
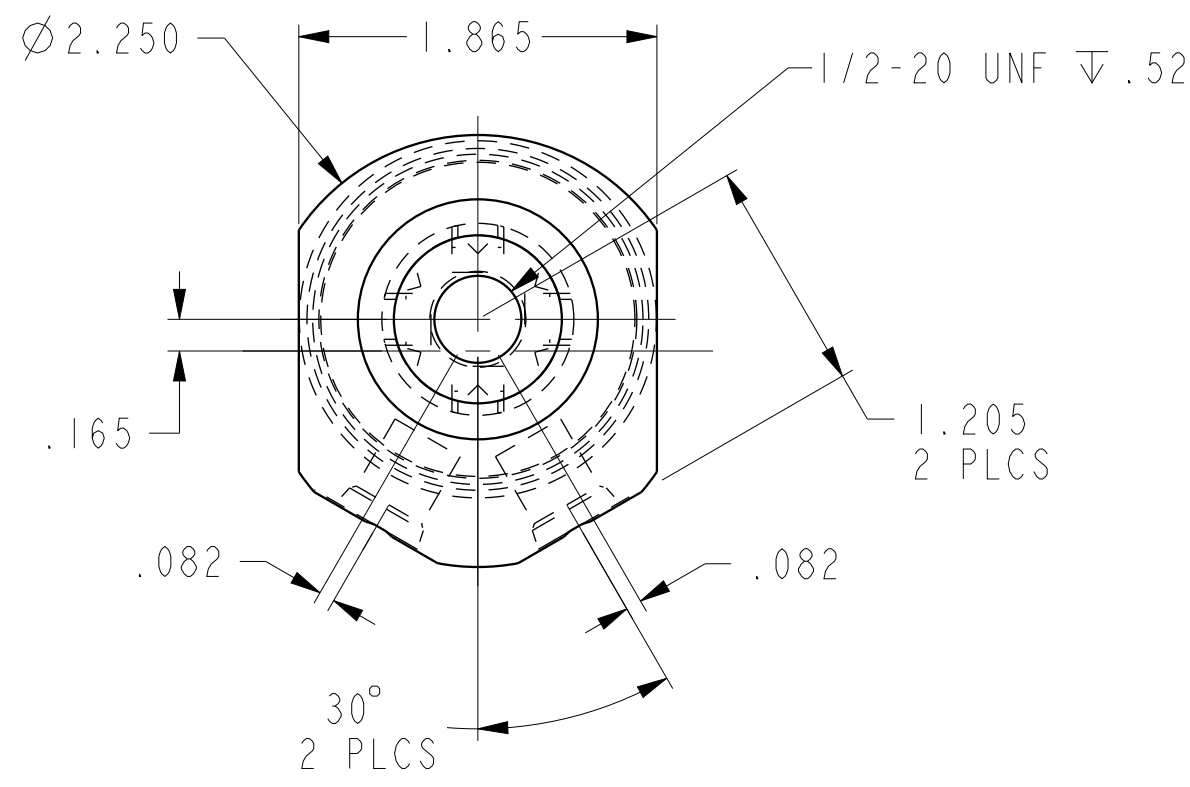
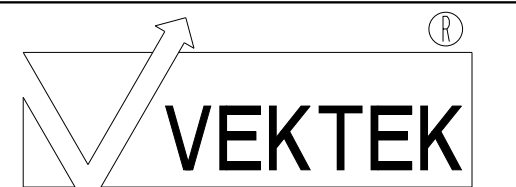


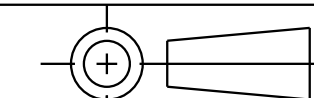
ILC14021301LPS REV D ECN 4186



CAD CONTROL DRAWING



VEKTEK, INC.
1334 E. SIXTH AVE. P.O. BOX 625
EMPORIA, KS. 66801 U.S.A.



D	4186	RELEASE	JDW	07/03/20
REV	IN ACCORDANCE WITH ECN	EFFECTIVE DATE	REVISED BY	DATE
DRW BY:	K. ROEMER	DRAWING STATUS: Released		
DATE:	02-01-05	PRODUCTION APPROVED FOR RELEASED STATUS ONLY		

14021301LPS	A
REFERENCE MODEL	REF REV
TOLERANCES DO NOT APPLY DIMENSIONS ARE NOMINAL	

SIZE	D	ILC14021301LPS	REV	D
------	---	----------------	-----	---